

ALASKA

RAILROAD

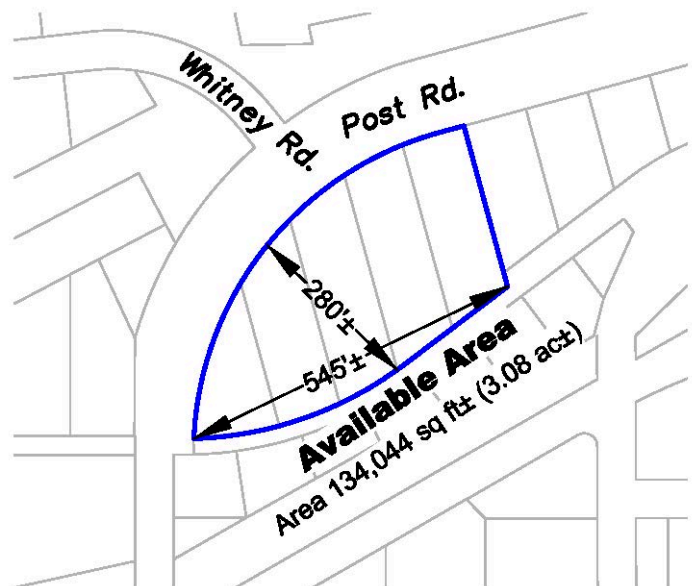


YOUR TICKET

TO INDUSTRIAL SPACE in the Ship Creek Development District

1300 N. Post Road Available Immediately **907.265.2325**

- Zoned I-2
- Excellent Corner Exposure
- Long term ground lease available
- Water and Sewer Available to site
- Great Industrial Development potential



QUESTIONS?

Kellyan Taylor
907.265.2325 or
taylork@akrr.com