

ALASKA

RAILROAD



YOUR TICKET

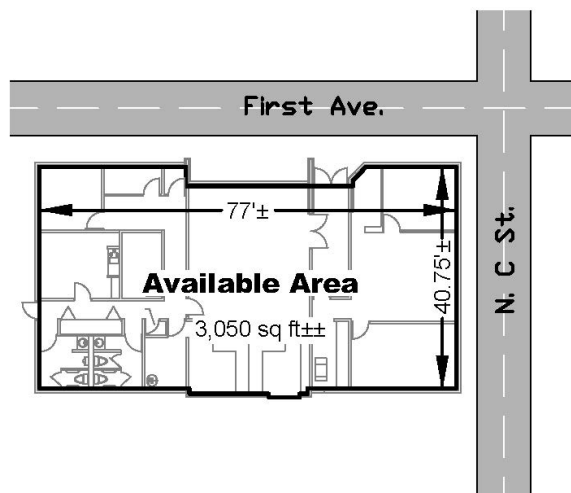
To Multi-Use Space in the Ship Creek Development District

320 W. 1st Avenue

Available Immediately

907.265.2325

- Excellent downtown location across from the Historic Depot
- 3,050 sq.ft. one-story building
- Ample free parking
- Handicap accessible
- Broker courtesy



QUESTIONS?

Kellyan Taylor
907.265.2325 or
Taylork@akrr.com