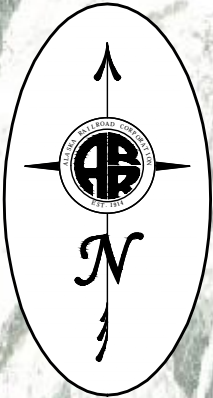



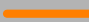


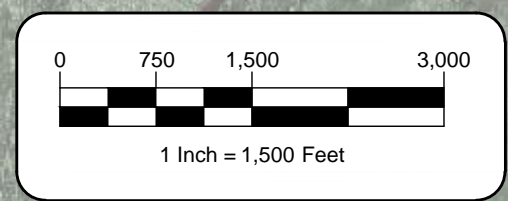
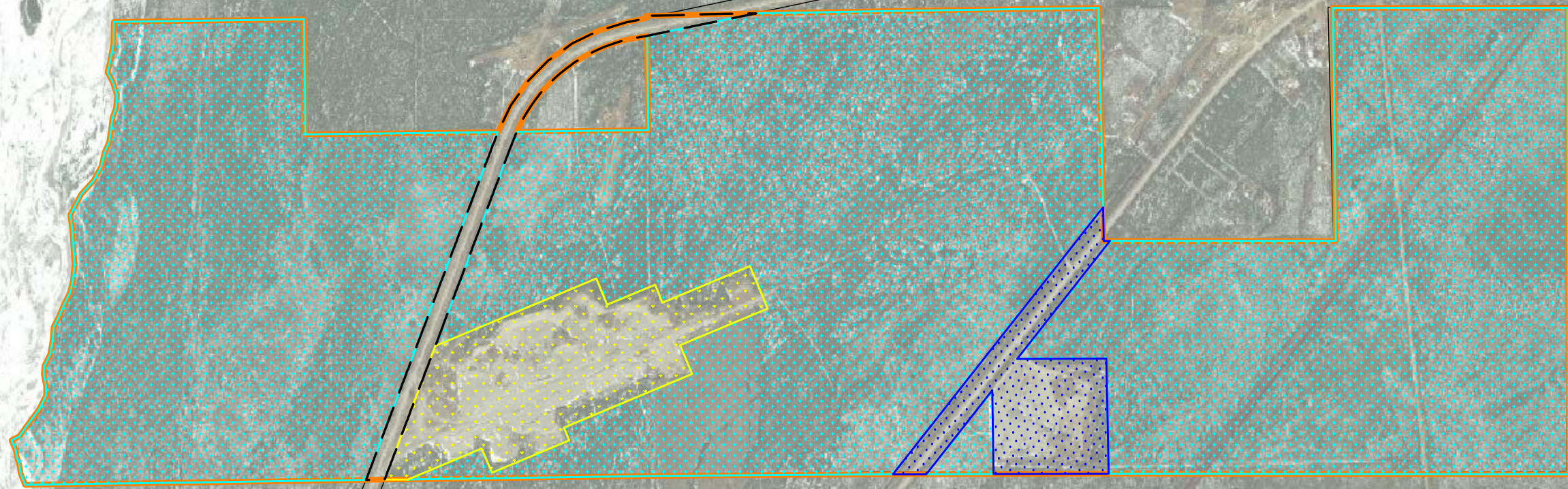


ALASKA RAILROAD



-  Non-Useable Land
-  Useable Land
-  Operation Land
-  Reserve Boundary
-  ROW within Reserve
-  ROW outside of Reserve

Area Table	
Operation Land	} = 147 ac±
ROW Land	
Non-Useable Land	= 64 ac±
Useable Land	= 1,608 ac±
Total Land	= 1,819 ac±



 **ALASKA RAILROAD CORPORATION**
 REAL ESTATE DEPARTMENT, LAND SERVICES
 P.O. BOX 107500, ANCHORAGE, ALASKA 99510-7500

Clear Reserve Overview

DRAWN BY: AMB	SCALE: 1" = 1,500'	DATE: 2019-04-10
CHECKED BY: DAS	Clear Reserve	
APPROVED BY: DAS		

R:\00 RED\Res\Clear Site\ClearReserveUpdate.dwg