


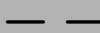

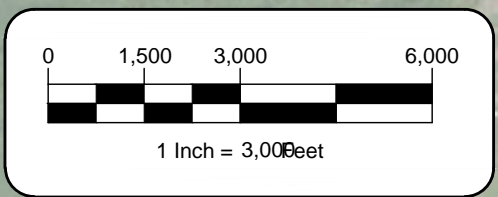
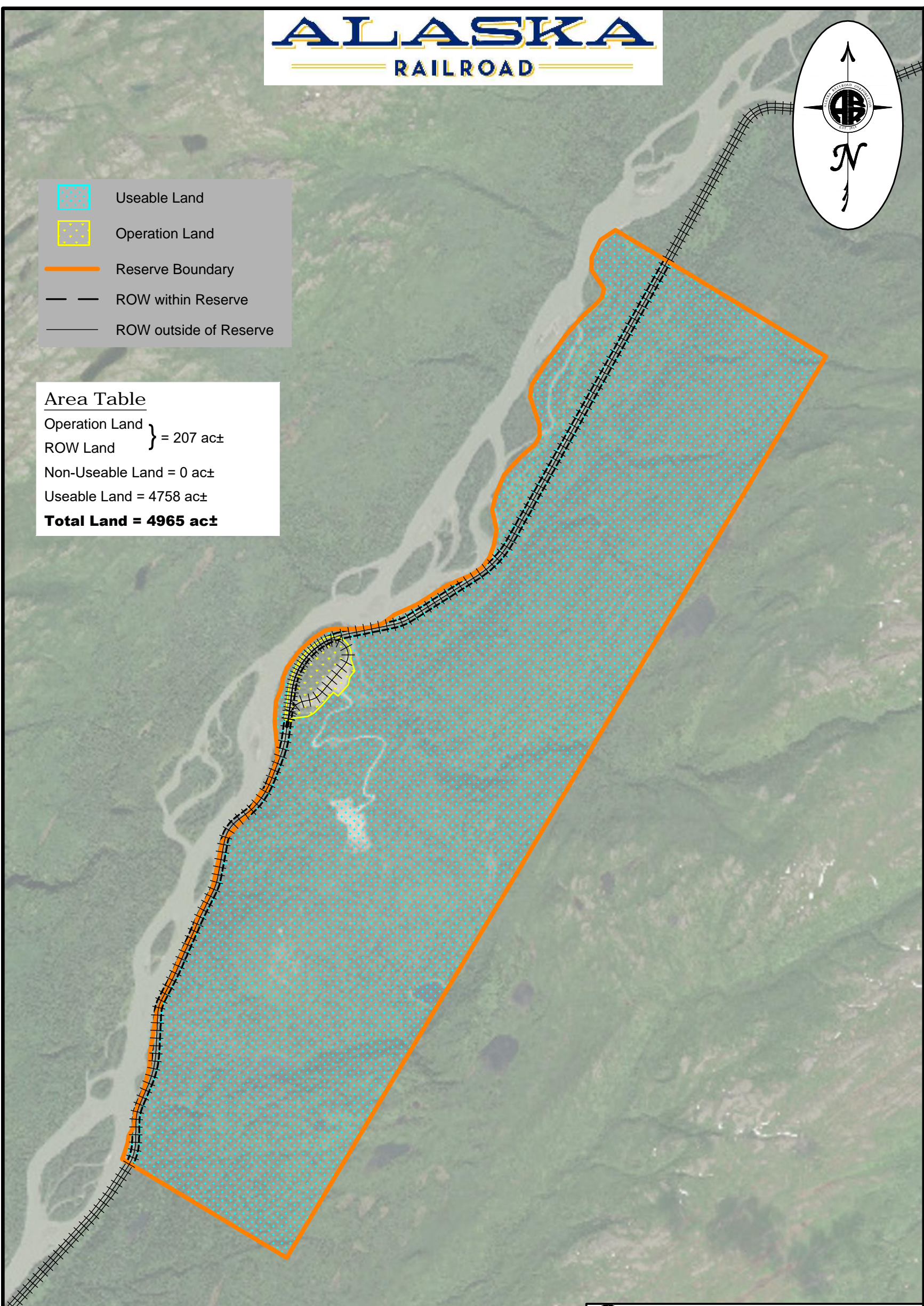



-  Useable Land
-  Operation Land
-  Reserve Boundary
-  ROW within Reserve
-  ROW outside of Reserve

Area Table

Operation Land } = 207 ac±
 ROW Land }
 Non-Useable Land = 0 ac±
 Useable Land = 4758 ac±
Total Land = 4965 ac±



 ALASKA RAILROAD CORPORATION REAL ESTATE DEPARTMENT, LAND SERVICES <small>P.O. BOX 107500, ANCHORAGE, ALASKA 99510-7500</small>		
Curry Reserve Overview		
DRAWN BY: AMB	SCALE: 1" = 3,000'	DATE: 2019-02-26
CHECKED BY: DAS	Curry Reserve	
APPROVED BY: DAS		
<small>R:\00 RED\Res\CUR\CurryReserveUpdate.dwg</small>		