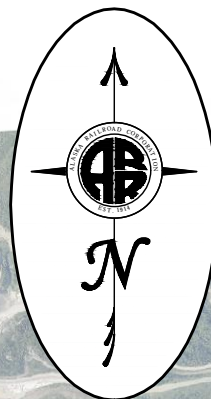
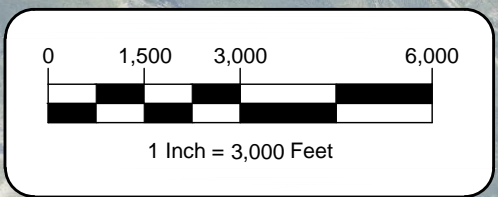


ALASKA RAILROAD



-  Existing Lease
-  Existing Permit
-  Non-Useable Land
-  Useable Land
-  Operation Land
-  Reserve Boundary
-  ROW within Reserve
-  ROW outside of Reserve

Area Table
 Operation Land = 121 ac±
 ROW Land = 210 ac±
 Non-Useable Land = 234 ac±
 Useable Land = 5,473 ac±
Total Land = 6,037 ac±
 of which 4,680 ac± are vacant



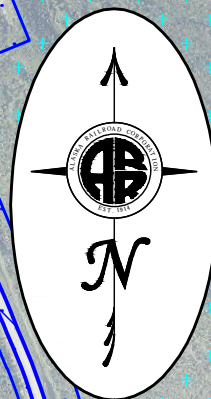
Sheet 1 of 2

 **ALASKA RAILROAD CORPORATION**
 REAL ESTATE DEPARTMENT, LAND SERVICES
 P.O. BOX 107500, ANCHORAGE, ALASKA 99510-7500

Healy Reserve Overview

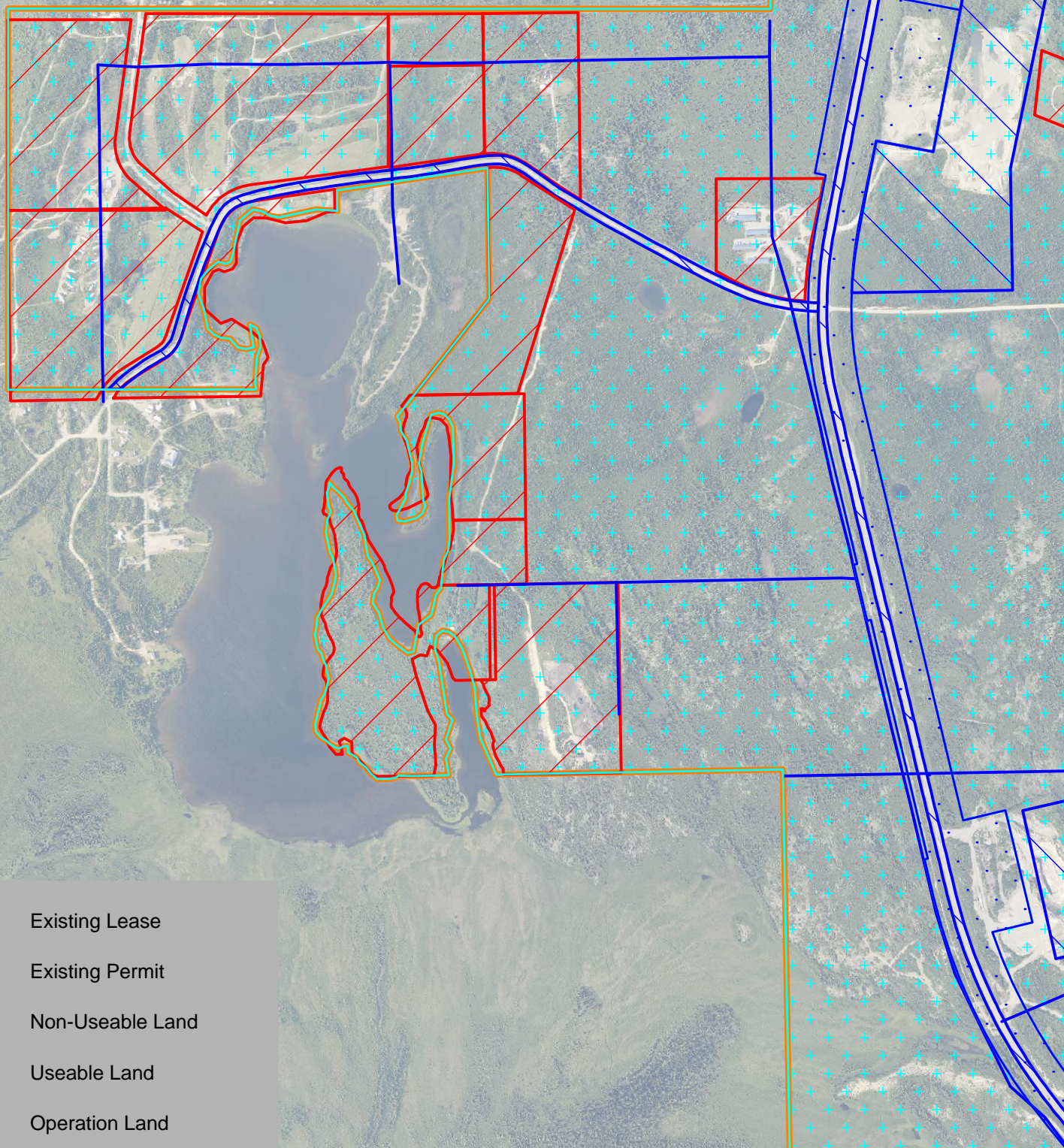
DRAWN BY:	AMB	SCALE: 1" = 3,000'	DATE: 2019-04-11
CHECKED BY:	DAS	Healy Terminal Reserve	
APPROVED BY:	DAS		

R:\00 RED\Res\HEA\UpdatedHealyReserve.dwg



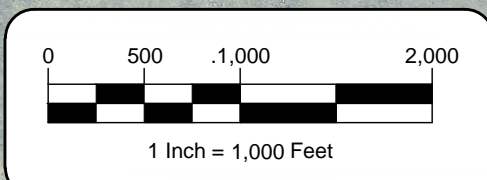
Area Table

Operation Land = 121 ac±
 ROW Land = 210 ac±
 Non-Useable Land = 234 ac±
 Useable Land = 5,473 ac±
Total Land = 6,037 ac±
 of which 4,680 ac± are vacant



- Existing Lease
- Existing Permit
- Non-Useable Land
- Useable Land
- Operation Land
- Reserve Boundary
- ROW within Reserve
- ROW outside of Reserve

Sheet 2 of 2



ALASKA RAILROAD CORPORATION REAL ESTATE DEPARTMENT, LAND SERVICES <small>P.O. BOX 107500, ANCHORAGE, ALASKA 99510-7500</small>		
<h3>Healy Reserve Overview</h3>		
DRAWN BY: <u>AMB</u>	SCALE: 1" = 1,000'	DATE: 2019-04-11
CHECKED BY: <u>DAS</u>	Healy Terminal Reserve	
APPROVED BY: <u>DAS</u>		
R:\00 RED\Res\HEA\UpdatedHealyReserve.dwg		