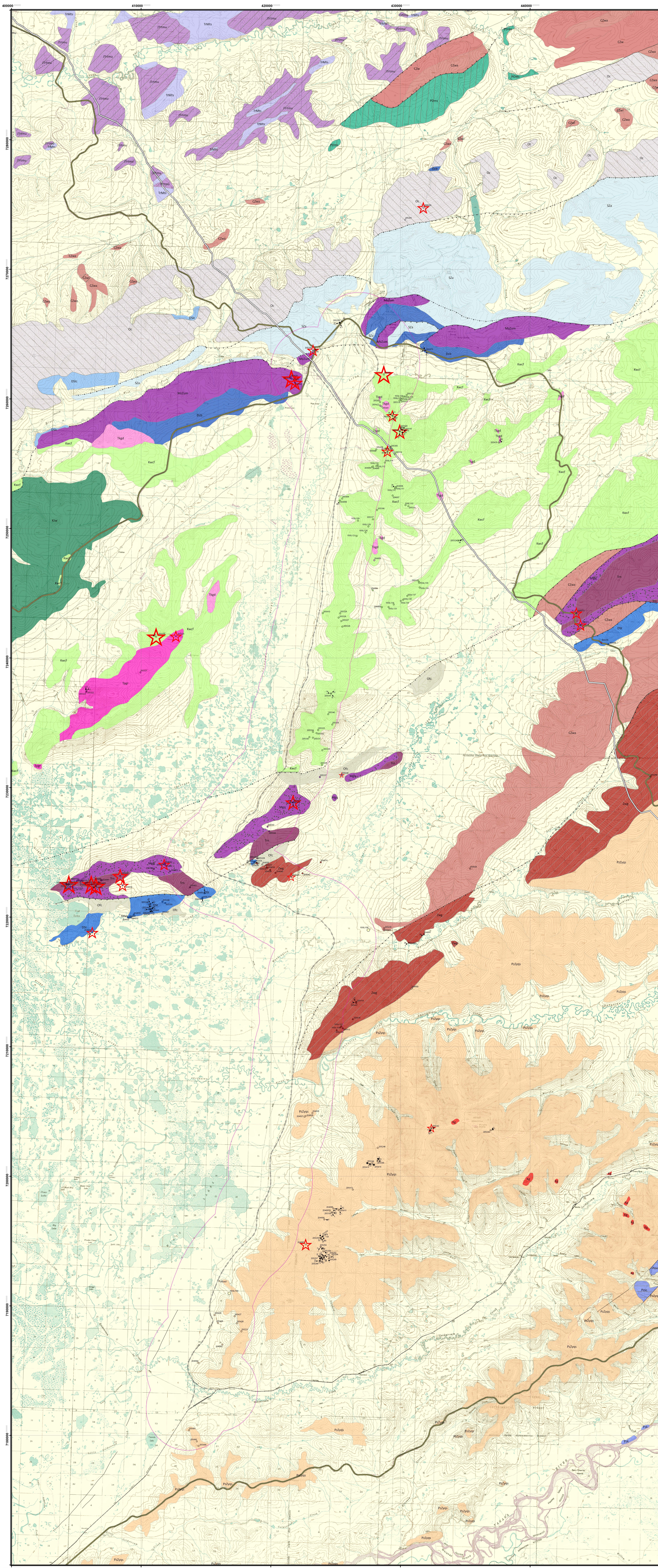


# Geologic Map of the Proposed Dunbar to Livengood Rail Extension

compiled by Peppi Bolz



## Bedrock Geology

### Mesozoic Intrusions

- Tpgr - Granitic Rocks
- Tkgd - Felsic Granitic Rocks
- Kg - Granitic Rocks

### Cretaceous

- Kwcf - Mesozoic Flysch (Wilbur Creek Flysch)

### Cretaceous and/or Jurassic

- KJw - Wolverine Quartzite
- KJvr - Vrain Unit

### Triassic

- Trn - Mesozoic Sill Complex (Mafic Igneous Rocks)

### Mesozoic and Paleozoic

- JTrtmu - Mafic and Ultramafic Rocks
- TrTms - Sedimentary Rocks

### Paleozoic

- PDms - Sedimentary Rocks
- Mgq - Globe Quartzite
- Dcb - Cascaden Formation
- Dtr - Troublesome Unit
- Dsv - Volcanic part of Schwatka Unit
- DSLc - Lost Creek Unit
- DST - Tolovana Limestone
- SZa - Amy Creek Unit (Silurian? Late Proterozoic?)
- Oc - Livengood Dome Chert
- Ofc - Fossil Creek Volcanics
- Pzsc - Spruce Creek Sequence
- Pzk - Keevy Peak Formation
- MzZum - Livengood Ophiolite (Ultramafic and Mafic Rocks)

### Paleozoic to Proterozoic

- CZw - Wickersham Grit Unit undivided
- CZwl - Wickersham Limestone
- CZwa - Argillaceous Upper Unit
- Zwg - Gritty Lower Unit
- PzZyqs - Fairbanks Schist Unit (Proterozoic? Paleozoic?)

## Explanation

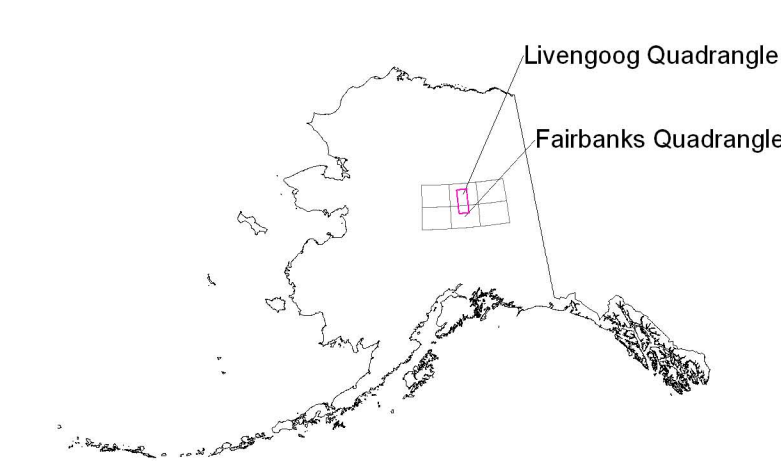
- 205316 - Sample Site
- Fault Certain
- Fault Concealed
- Fault Inferred
- Thrust Certain
- Thrust Concealed
- Thrust Inferred
- Joint
- + Vertical Joint
- \* Horizontal Joint
- Foliation
- Vertical Foliation
- \* Horizontal Foliation
- Foldaxis

- Proposed Railroad Corridor Outline
- Existing Railroad
- Trans-Alaska Pipeline System
- Major Roads
- Proposed Route

### L.A. Abrasion Loss (%)

- ★ 13 - 16
- ★ 17 - 20
- ★ 21 - 30
- ★ 31 - 40
- ★ 41 - 43

## Study Area Location



Topographic base maps from: Livengood A-4, B-3, B-4, C-3, C-4 and Fairbanks D-4, C-4

Map Projection: UTM zone 6

Datum: NAD 83

Bedrock Geology mainly compiled from: Weber and others 1992, Wilson and others 1998

Additional Data Sources: Robinson & Metz (1979), Bundtzen (1983), Albanese (1983), Smith (1983)

Digital Compilation by: Peppi Bolz

Geological Field Work by: M.E. Billings, Peppi Bolz, T.K. Bundtzen, Greg Laird, Tina Laird, Paul Metz, Larry Nichols, K.E. Obermiller

