



ALASKA RAILROAD CORPORATION  
327 W. Ship Creek Ave.  
Anchorage, AK 99501  
Phone 907-885-1747  
[says@akrr.com](mailto:says@akrr.com)

January 18, 2024

Addendum 3  
ITB # 23-83-312846  
2024 Track Material

**This addendum is issued to provide a correction to line item 11, extend the closing date, and answer questions for clarification on this solicitation.**

The closing date for this ITB **has been** changed.  
**Bids will be received until February 1<sup>st</sup>, 2024 at 2:00 PM Alaska time.**

---

#### Questions & Answers

1. Per line #2, Stock #020106, 115# Rail Anchors, will ARRC accept 25 ea. per bag?  
**Yes.**
2. Per line #3, Stock #312208, 14" 115# Tie Plates, will ARRC accept 100 per pallet?  
**Yes.**
3. Per line #4, Stock #024175, 141# joint bats, can ARRC please provide a drawing?  
**Yes, please view page three of this addendum and as well as the attachments on the solicitations page, a drawing for this item has been added.**
4. Per line #5, Stock #315046, 141# Rail Anchors, will ARRC accept 25 per bag?  
**Yes.**
5. Per line #7, Stock #023816, e-clips will ARRC please confirm the clips are Pandrol 2055 non galvanized clips?  
**Yes, Pandrol 2055 – non galvanized.**
6. Per line #11, Stock #023308, Spikes, can ARRC please clarify the quantity?  
**The original solicitation measurement of unit is incorrect. The modified quantity amount is based on pail and is now 5,400. Keep in mind that if each can/keg/pail holds 61 spikes, and 36 pails fit on one pallet, the total is 150 pallets. Please see the below table for the quantity change on line item # 11. This amount should equal two boxcar loads.**

Line Item #	ARRC Stock Item #	Quantity/ Measurement of Unit	Description
11	023308	4,000 each 5,400 pails	Spikes (61/pail, 48 pail/plt) NEW RAILROAD TRACK SPIKE. 5/8" X 6" PRIME, HIGH CARBON. FOR: 115# RE RAIL. PER AAR PLAN 8.1 AND A.R.E.A. DESIGN 5.2. PACKAGED IN 50 LB. PER CANS. 1 EACH WT.=.825 LBS. PURCHASED AND SOLD BY PAIL 1 CAN WEIGHT = 50 LBS. 61 EACH SPIKES PER CAN 36 CANS PER PALLET (PALLET WT = 1800 LBS) EACH PALLET NEEDS TO BE SHRINK-WRAPPED TYPICAL BOXCAR HOLDS 75 PALLETS = 2700 PAILS SEMI-TRAILER HOLDS 18 PALLETS = 648 PAILS

7. Please confirm all items must meet "Buy America" requirements?

Yes.

8. Per line #12, Stock # 100791, Victor Tie Plates, please confirm plate hole type?

The plates ARRC is requesting should have two square holes for the cut spikes against the rail and the remaining 4 or 5 round holes for the lag screws, see attachment titled "Photo of Victor Tie Plates" on the solicitation, as well as page four of this addendum.

Please direct all responses and/or questions concerning this solicitation and addenda directly to:

**Sazil Say**

Procurement Administrator

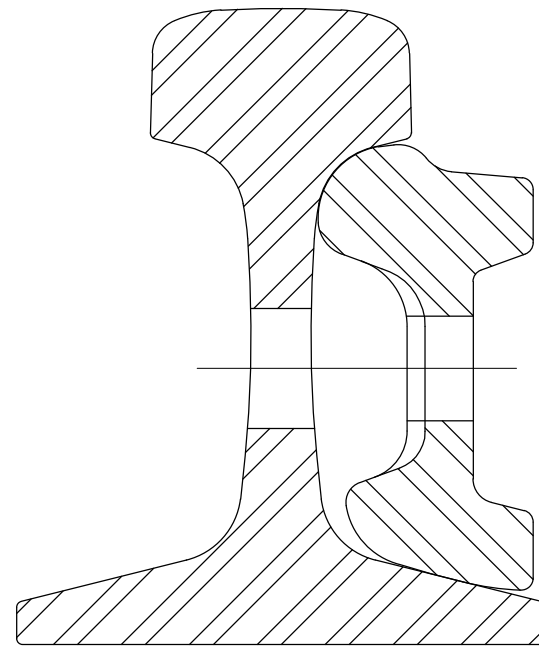
[says@akrr.com](mailto:says@akrr.com)

907.265.8747 office

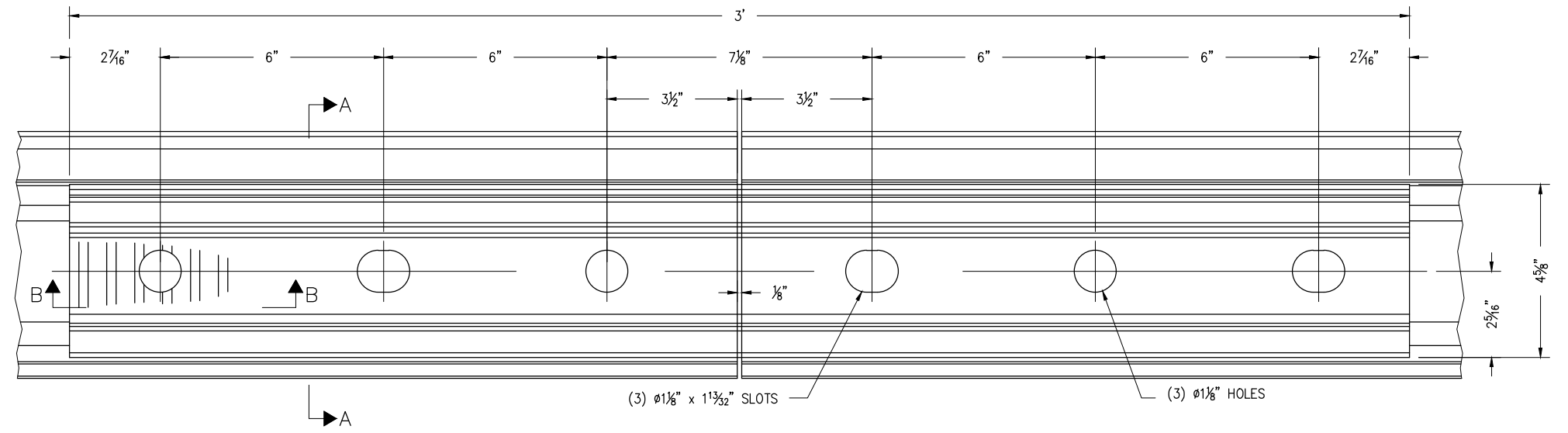
907.885.1747 mobile

physical: 327 W. Ship Creek Ave, Anchorage, AK 99501

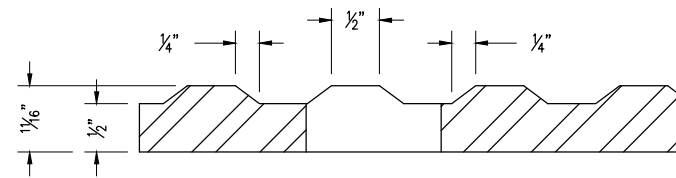




**SECTION A-A**  
HALF SCALE



**JOINT FASTENER ASSEMBLY - ELEVATION**  
SCALE: 3" = 1'-0"



**SECTION B-B**  
HALF SCALE

MATHEMATICAL PROPERTIES	
JOINT (TWO BARS)	
MOMENT OF INERTIA	= 23.0
SECT. MODULUS - TOE	= 10.5
SECT. MODULUS - BTM	= 9.6
EACH BAR	
GROSS WEIGHT - LBS.	= 53.65
MAX. AREA - SQ. IN.	= 5.45
MIN. AREA - SQ. IN.	= 5.07
AVG. AREA - SQ. IN.	= 5.26

	<b>ALASKA RAILROAD CORPORATION</b> OFFICE OF THE CHIEF ENGINEER P.O. BOX 107500, ANCHORAGE, ALASKA 99510-7500 (907) 265-2456	
	STANDARD <b>36" HEAD FREE JOINT BAR</b> FOR 115 LB. RE RAIL	
	APPROVED:	DATE:
DESIGNED BY: <u>ARRC</u>	SCALE: AS NOTED	FILE: a5-12.04.dwg
DRAWN BY: <u>BBF</u>	DATE: 1/13/2004	5.12-04
CHECKED BY: <u>REH</u>		
APPROVED BY: <u>TEB</u>		



8192  
22-544  
2-30-1-4

7100  
22-544  
2-30-1-4