



ALASKA RAILROAD CORPORATION
327 W. Ship Creek Ave.
Anchorage, AK 99501
Phone 907-265-2355
Fax 907-265-2439
BatesT@akrr.com

November 20, 2019

Addendum Number 2
Request for Proposal 19-46-207704
Terminal Wireless Network Design & Installation

This addendum is being issued to provide information as follows: THE CLOSING DATE FOR THIS SOLICITATION HAS CHANGED AS FOLLOWS, SEALED BIDS WILL BE RECEIVED AT RECEPTIONS, ALASKA RAILROAD CORP. 327 W. SHIP CREEK AVENUE, ANCHORAGE AK 99501 UNTIL 3:00 PM LOCAL TIME ON, **DECEMBER 4, 2019** AT WHICH TIME BIDS WILL BE PUBLICLY OPENED.

PROPOSAL INFORMATION, CONDITIONS & INSTRUCTIONS:

Closing date changed to December 4, 2019.

BIDDER QUESTIONS:

General

1. Coverage Maps
 - a. What data do you want depicted on the coverage maps? Signal Strength (RSSI), Data Rate, other? **Both RSSI and Data Rate**
2. Network Connections
 - a. Does the scope of this work include non 802.11 Wireless components? Do you want us to engineer a wireless link to an area that does not have a network connection nor accessible power between two points to form a mesh network? **If a wireless link is required in order to provide the required coverage, please identify this in design and as a separate line item in cost.**

Fairbanks

1. Tower
 - a. Can we mount an access point on the water tower and use a network connection in the communications shelter at the base of the water tower? **Water tower is not available to mount antennas. The shelter can be used.**
2. Depot
 - a. None
3. Round House
 - a. None
4. Mechanical
 - a. Can we use the network connection provided by the Firetide equipment in the Mechanical Building? **Yes**
5. Noyes Slough

- a. Can you confirm that this is out of scope? **This should be included as a separate (add alt) item on the proposal.**

Seward

1. Depot

- a. Can we use the network connection provided by the Firetide equipment in the depot building? **No, all 3 of those connections are in use**
- b. Can we use the network connection provided by the Firetide equipment in the auxiliary building at the North end of the depot parking lot? **No. Those Firetides connect to the Firetide at the Depot itself and that Firetide is full, ARRC can not transport the ATCS / PTC network to the depot with the existing equipment.**

2. Section House

- a. Can we use the network connection provided by the Firetide equipment in the section house? **Yes, we can use one of the Ethernet ports on the existing Firetide there to drop out the ATCS / PTC network.**

b.

3. Tower

- a. None

4. Light Poles

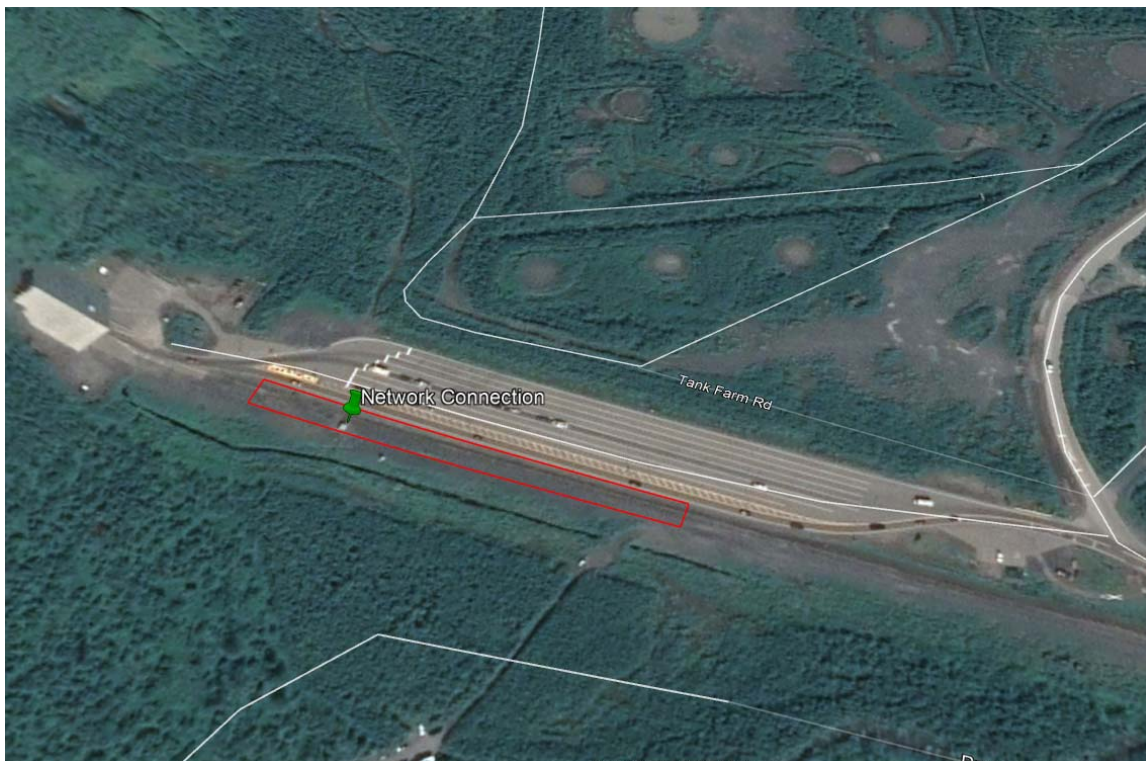
- a. Please provide power details on the poles in the yard such as voltage, number of phases, availability, and if the power remains at the pole when the lights are not on (only applicable if we cannot use the network connection in the section house). **ARRC is still getting clarification on this subject. Details will be provided in subsequent addendum**

Whittier

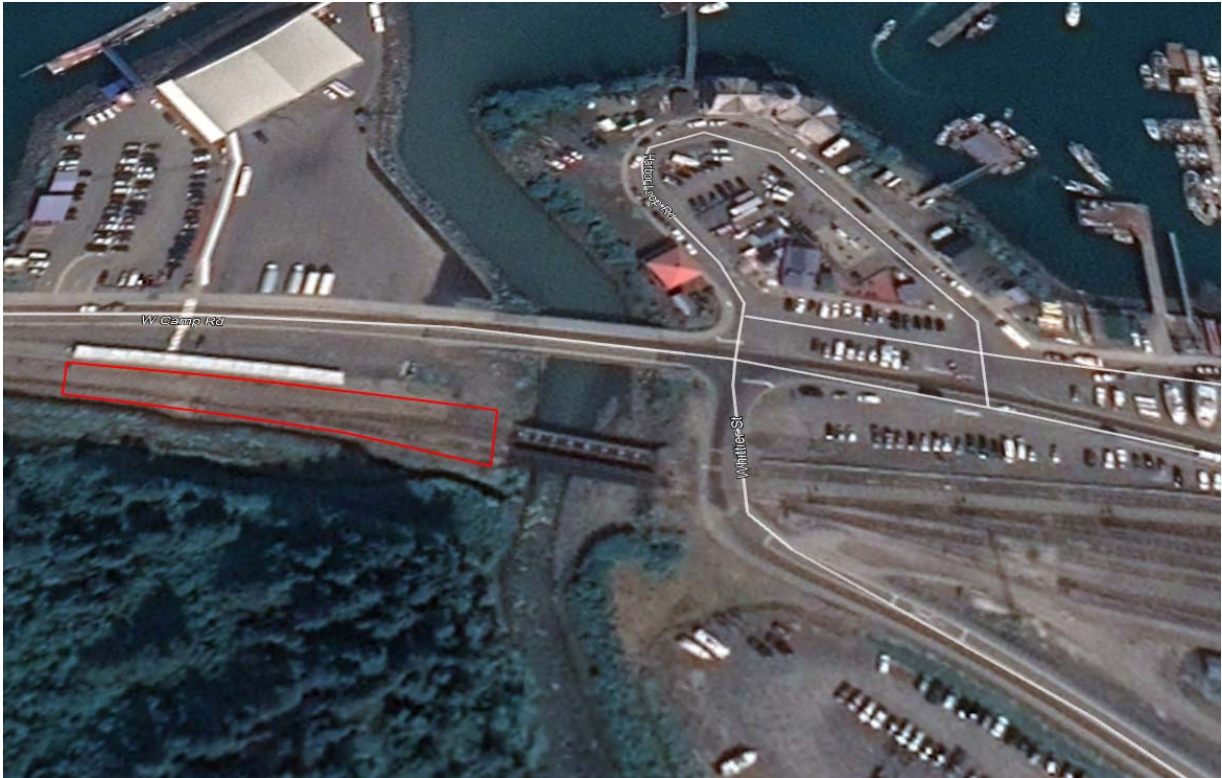
1. Will a coverage map be available prior to the bid deadline?

Coverage area near Anton Anderson Memorial Tunnel:

There is a very limited connection to the signal shelter outside tunnel door 1 (Whittier)



Coverage Area near Whittier Passenger Platform:



1. Depot
 - a. We did not walk the passenger terminal due to work in progress there. Is there power available at the passenger terminal and if so is it available 24/7? **In previous years AKRR put a generator out in this area when the passenger tent was up.**
 - b. Is there still a requirement to cover the passenger terminal area? **Yes**
2. Section House
 - a. None
3. Tower
 - a. None
4. Light Poles
 - a. Please provide power details on the poles in the yard such as voltage, number of phases, availability, and if the power remains at the pole when the lights are not on (only applicable if we ARRC desires a network connection West of the section house closer to the passenger terminal). **Light poles are owned by the railroad. Power is available.**

Please acknowledge receipt of this and all addendums in your firm's **SERVICE BID FORM (Form 395-0129)**. **All other dates, terms and conditions remain unchanged.**

Please direct all responses and/or questions concerning this solicitation to Timothy Bates, Alaska Railroad Corporation, Contracts, 327 Ship Creek Avenue, Second Floor, Anchorage,

AK 99501, telephone number 907-265-2355, fax number 907-265-2439 or at email address BatesT@akrr.com .

Sincerely,

Timothy Bates

Timothy Bates

Contract Administrator

Alaska Railroad Corporation