

**NOTES:**

1. CROSSING ENGINEERED TO PROVIDE A MINIMUM 20 SECONDS WARNING TIME AT THE MAXIMUM AUTHORIZED TRAIN SPEED FOR EACH MAIN TRACK APPROACH
2. CROSSING APPROACHES WERE LENGTHENED 10 SECONDS TO COMPENSATE FOR ACCELERATING TRAINS AND BALLAST CONDITIONS
3. CROSSING APPROACHES WERE LENGTHENED 4 SECONDS FOR EQUIPMENT REACTION TIME
4. BATTERY #1 BANK CONSISTS OF 6 TYPE KCT-360 WITH A CAPACITY OF 360 AMP HOURS
5. BATTERY #2 BANK CONSISTS OF 6 TYPE KCT-360 WITH A CAPACITY OF 360 AMP HOURS

**LEGEND**

- ① TRACK ARRESTER (SEE NOTE 2)
- ② EQUALIZER (SEE NOTE 2)
- ③ LINE ARRESTER (SEE NOTE 2)
- Ⓐ NO 6 AWG THNN/THWN FLEX WIRE WITH RED SHEATH (B12)
- Ⓑ NO 6 AWG THNN/THWN FLEX WIRE WITH BLACK SHEATH (N12)
- Ⓒ NO 6 AWG THNN/THWN FLEX WIRE WITH GREEN SHEATH (SAFETY GROUND)
- Ⓢ TWISTED WIRE TWO TURNS PER FOOT
- xx BELL

**FAIRVIEW LOOP ROAD**

DOT 868 315D  
MP 156.19

<b>The ALASKA RAILROAD CORPORATION</b>	
P.O. BOX 107500 , ANCHORAGE , ALASKA 99510-7500	
SIGNAL ENGINEERING	DOT 868315D
LAT: 61.563	FAIRVIEW LOOP ROAD
LONG: -149.351	MP 156.19
RAILROAD-HIGHWAY GRADE CROSSING WARNING SYSTEM	

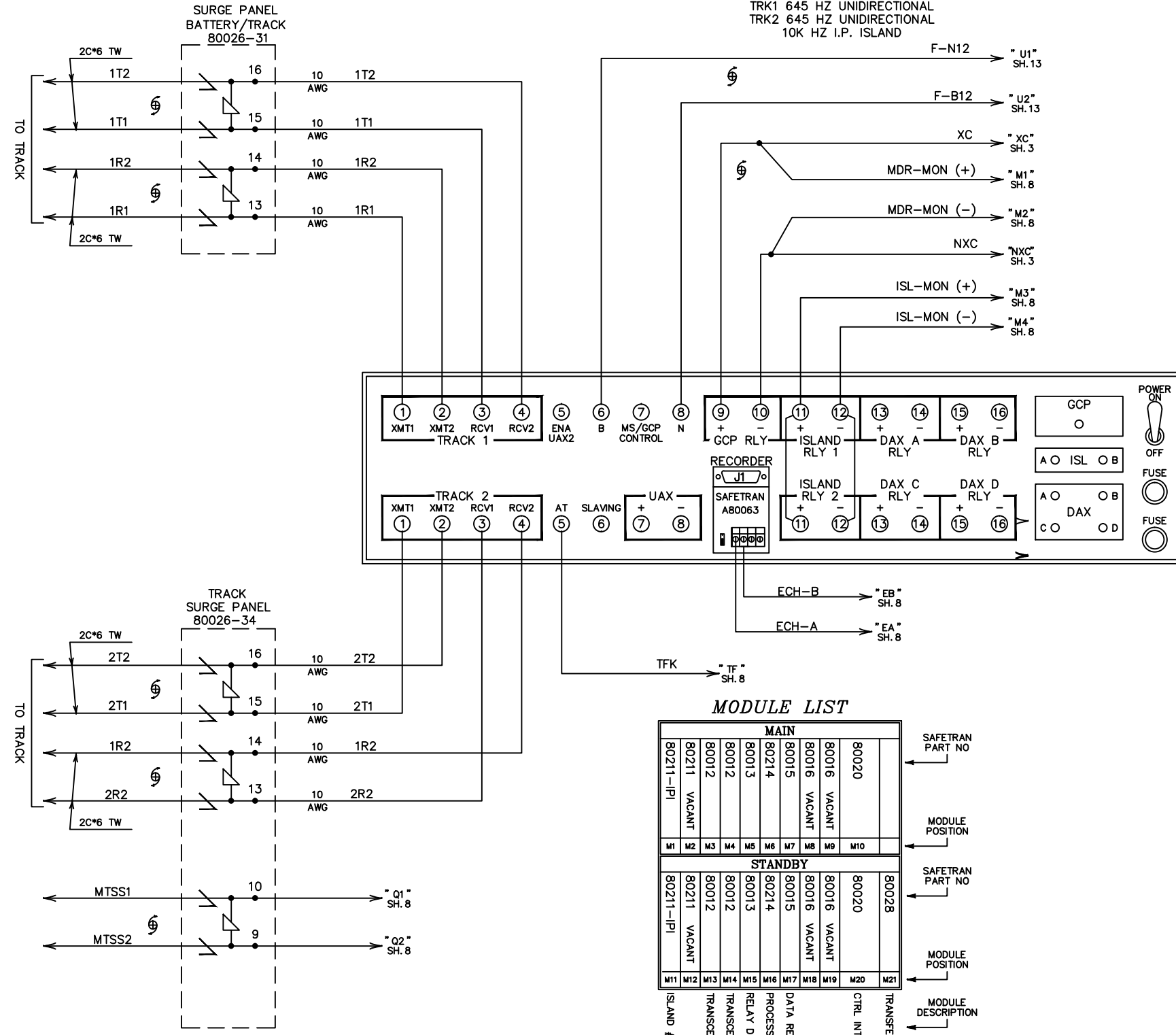
**REVISIONS**

IN SERVICE DATE: 03-10-15 UPDATED	IN SERVICE DATE: 4-24-14 ADDITION OF SEAR II	IN SERVICE DATE: 11-08-13 UPDATED FOR L.E.D.	IN SERVICE DATE: 03-22-11 UPDATED	IN SERVICE DATE: 02-17-11 UPDATED	AS-INSTALLED 05-31-07 INSTALL MICROLOCK II MATANUSKA-PITTMAN DSD/DWH
COR: JAK CHK:	COR: TAM CHK: BWL	COR: TAM CHK:	COR: FWK CHK:	COR: FWK CHK:	

DRAWN: AKRR DATE: XX-XX-XX	DWG NO. 868315D	1 SHEET OF 14
-------------------------------	-----------------	---------------

**GCP-3000**  
MICRO GCP/MS  
MODEL 3000D2

TRK1 645 HZ UNIDIRECTIONAL  
TRK2 645 HZ UNIDIRECTIONAL  
10K HZ I.P. ISLAND



**PROGRAM INFORMATION**

LEVEL "F" SOFTWARE OR LATER

NUMBER of TRACKS	2	
TRACKS ASSIGNMENT	TRACK 1	TRACK 2
FREQUENCY	645 HZ	645 HZ
APPLICATION	UNI	UNI
TRANSMIT LEVEL	* MED	MED *
MODE of OPERATION	PRED	PRED
WARNING TIME	35	35
APP DISTANCE-SELECTED	1800'	1800'
APP DISTANCE-CALCULATED	*	*
UAX1 PU DELAY	NA	NA
UAX2/ENA PU DELAY	NA	NA
ISLAND DISTANCE	* 128	*
NUMBER of DAXS	0	
DAX "A" DISTANCE	N/A	N/A
DAX "A" WARNING TIME	N/A	N/A
DAX "B" DISTANCE	N/A	N/A
DAX "B" WARNING TIME	N/A	N/A
DAX "C" DISTANCE	N/A	N/A
DAX "C" WARNING TIME	N/A	N/A
DAX "D" DISTANCE	N/A	N/A
DAX "D" WARNING TIME	N/A	N/A
SLAVING	MASTER	
PASSWORD	DISABLED	
DATA RECORDER	INSTALLED	

**FUNCTION INFORMATION**

TRACKS ASSIGNMENT	TRACK 1	TRACK 2
SWITCH TO MS/EZ LEVEL	10	10
TRANSFER DELAY MS>GCP	0	0
PRIME PRED OFFSET	0	
PRIME PICKUP DELAY	15	
DAX "A" PICKUP DELAY	15	
DAX "B" PICKUP DELAY	15	
DAX "C" PICKUP DELAY	0	
DAX "D" PICKUP DELAY	0	
COMPENSATION VALUE	* ( )	* ( )
NUMBER OF TRACK WIRES	4	4

\* FIELD ADJUSTMENTS PER MANUFACTURER'S INSTRUCTION MANUAL

**MODULE LIST**

MAIN										SAFETRAN PART NO	MODULE POSITION
M1	M2	M3	M4	M5	M6	M7	M8	M9	M10		
80211-IP1	80211	VACANT	80012	80013	80214	80015	80016	VACANT	80020		
			TRANSCEIVER #1	RELAY DRIVE	PROCESSOR	DATA RECORDER	CTRL INTERFACE	TRANSFER TIMER			

STANDBY										SAFETRAN PART NO	MODULE POSITION
M11	M12	M13	M14	M15	M16	M17	M18	M19	M20		
80211-IP1	80211	VACANT	80012	80013	80214	80015	80016	VACANT	80020	80028	
			TRANSCEIVER #2							TRANSFER TIMER	

**The ALASKA RAILROAD CORPORATION**

SIGNAL ENGINEERING P.O. BOX 107500, ANCHORAGE, ALASKA 99510-7500

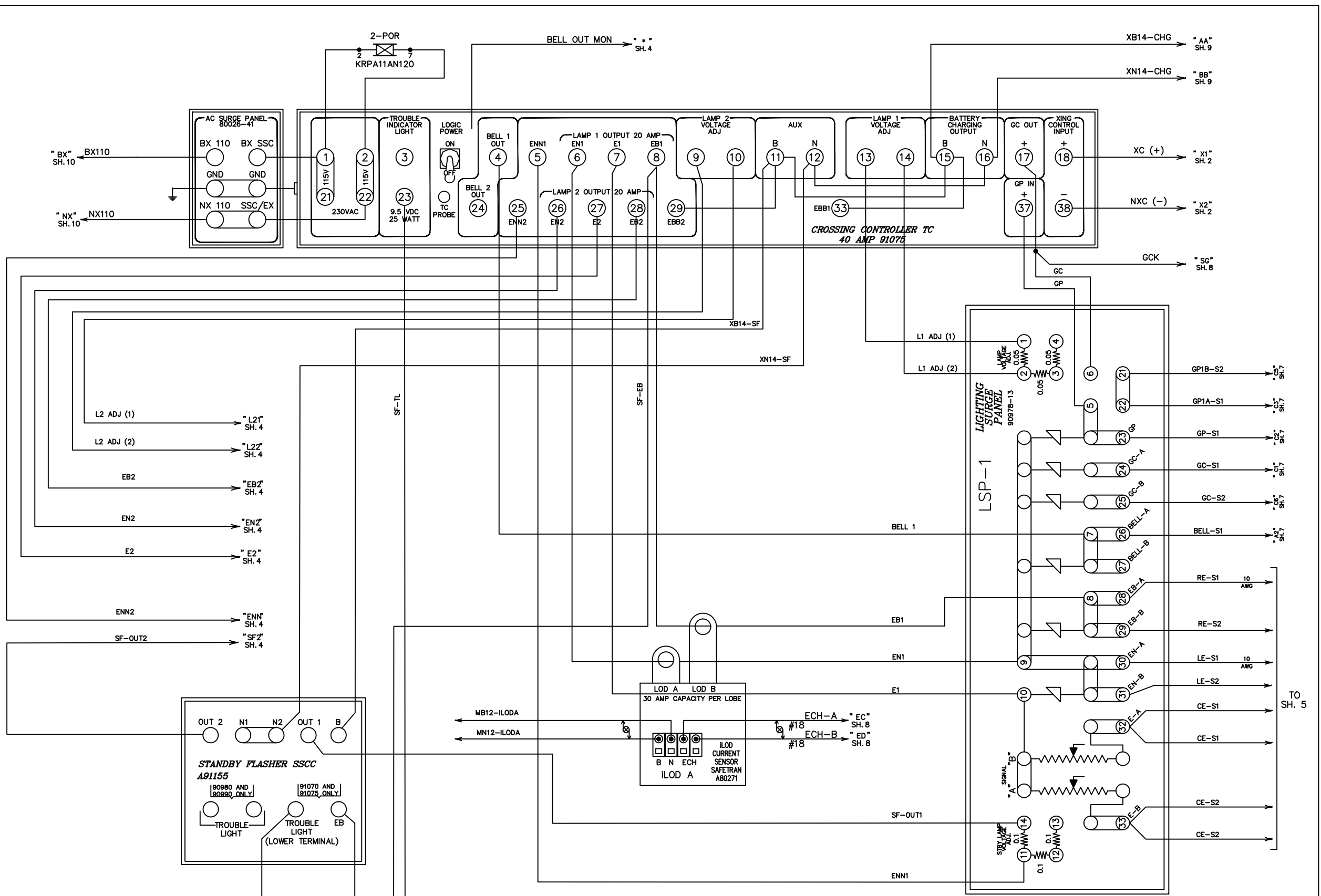
LAT: 61.563 DOT 868315D FAIRVIEW LOOP ROAD  
MP 156.19

LONG: -149.351 RAILROAD-HIGHWAY GRADE CROSSING WARNING SYSTEM

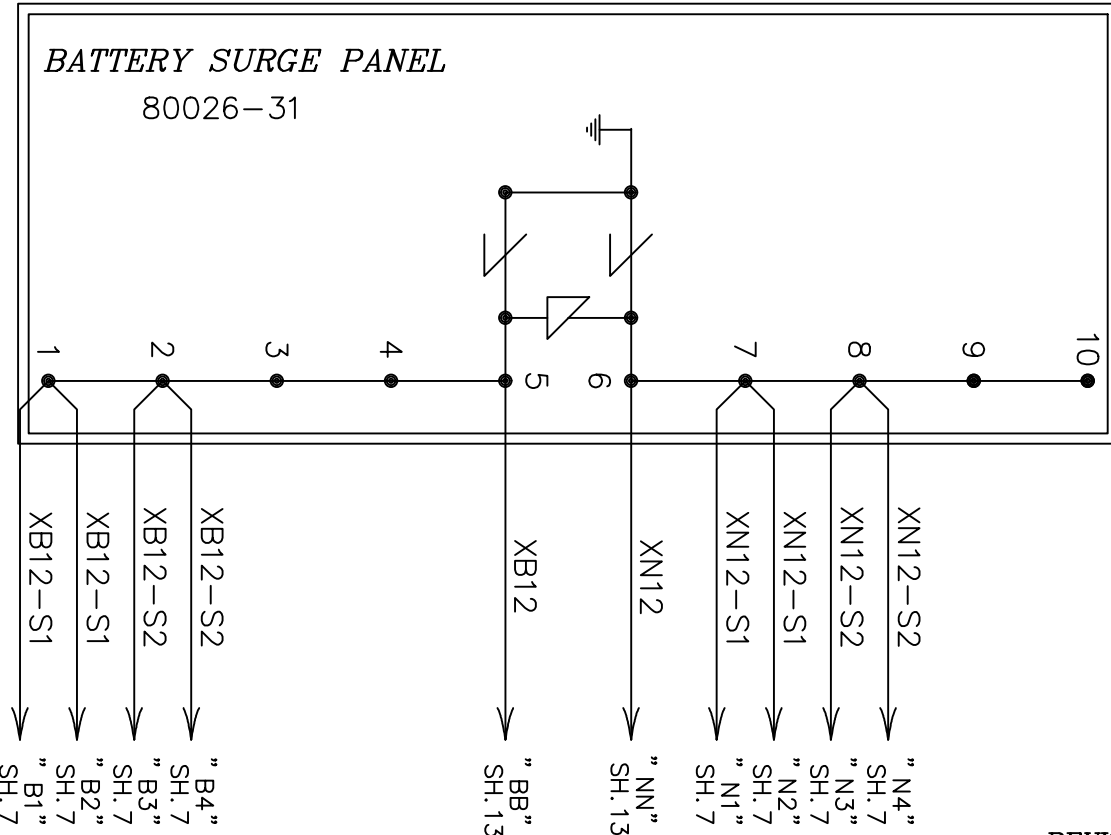
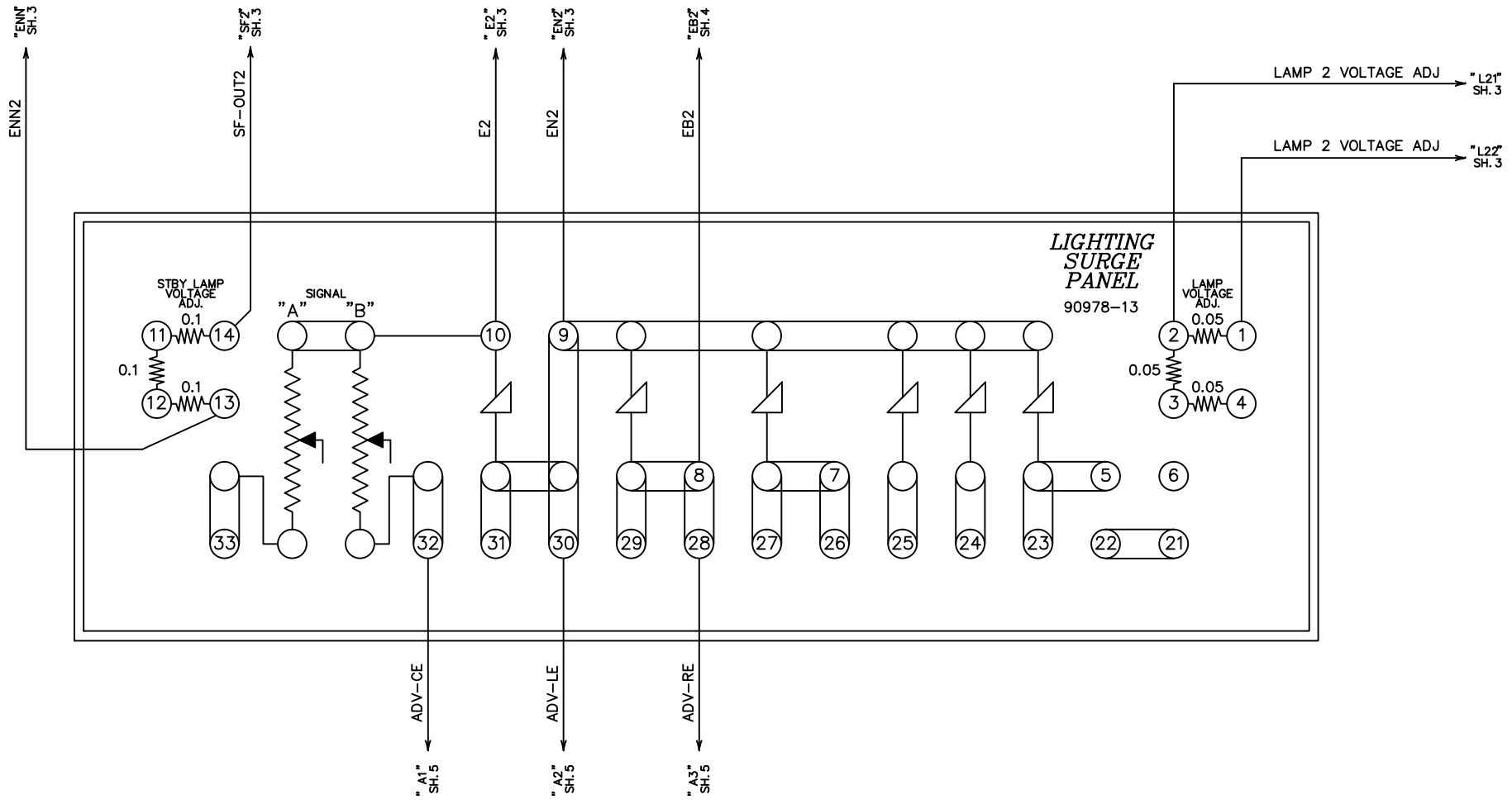
**REVISIONS**

IN SERVICE DATE: 03-10-15 UPDATED	IN SERVICE DATE: 4-24-14 ADDITION OF SEAR II	IN SERVICE DATE: 11-08-13 UPDATED FOR L.E.D.	IN SERVICE DATE: 03-22-11 UPDATED	IN SERVICE DATE: 02-17-11 UPDATED	AS-INSTALLED 05-31-07 INSTALL MICROLOCK II MATANUSKA-PITTMAN DSD/DWH
COR: JAK CHK:	COR: TAM CHK: BWL	COR: TAM CHK:	COR: FWK CHK:	COR: FWK CHK:	

DRAWN: AKRR DWG NO. 868315D  
DATE: XX-XX-XX SHEET OF 14

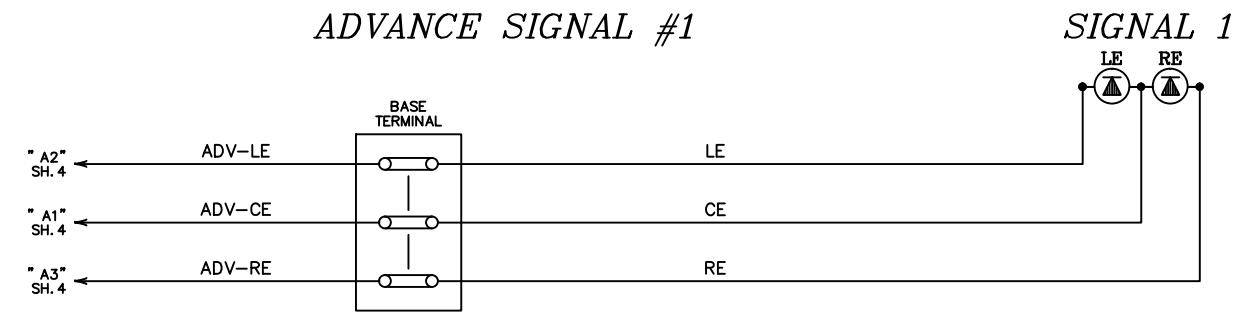
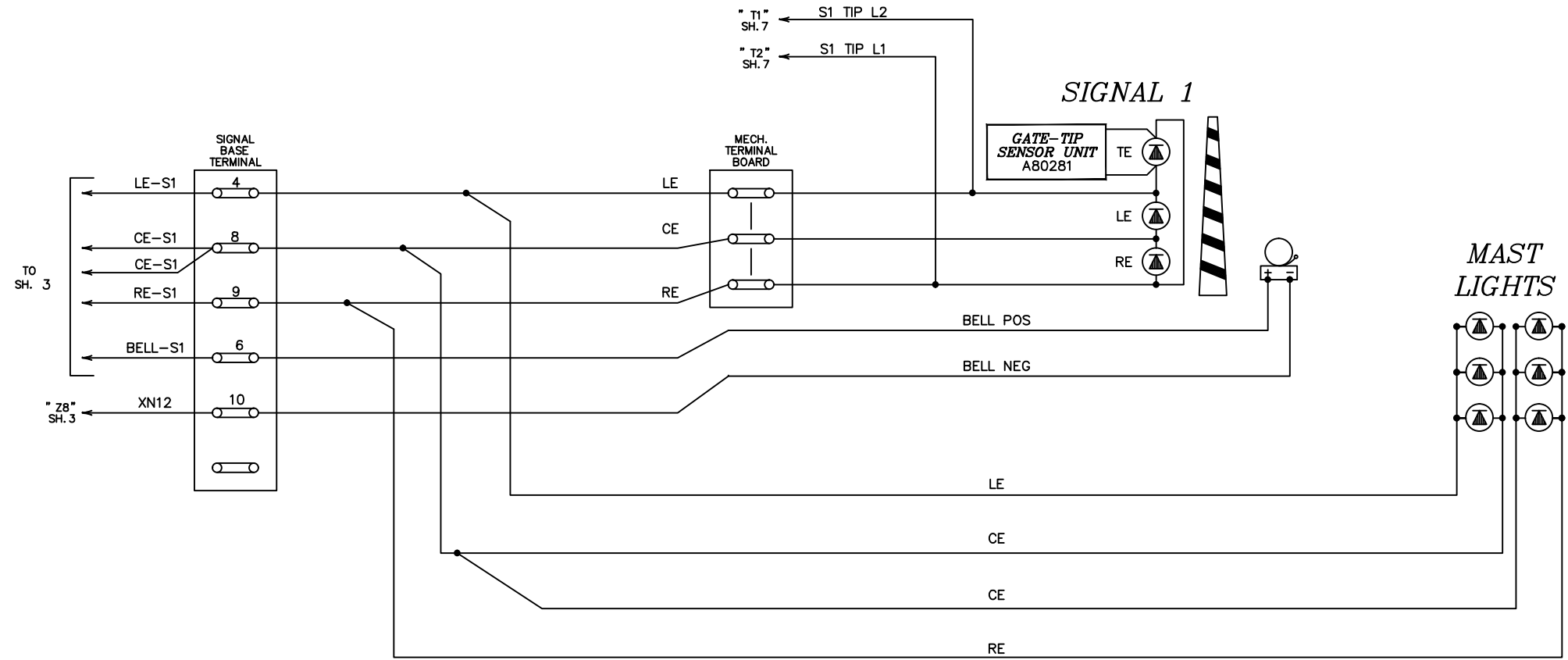


<b>The ALASKA RAILROAD CORPORATION</b>	
SIGNAL ENGINEERING P.O. BOX 107500, ANCHORAGE, ALASKA 99510-7500	
LAT: 61.563	DOT 868315D FAIRVIEW LOOP ROAD
LONG: -149.351	MP 156.19
RAILROAD-HIGHWAY GRADE CROSSING WARNING SYSTEM	
REVISIONS IN SERVICE DATE: 03-10-15 UPDATED COR: JAK CHK: IN SERVICE DATE: 4-24-14 ADDITION OF SEAR II COR: TAM CHK: BWL IN SERVICE DATE: 11-08-13 UPDATED FOR L.E.D. COR: TAM CHK: IN SERVICE DATE: 02-17-11 UPDATED COR: FWK CHK:	DRAWN: AKRR DATE: XX-XX-XX DWG NO. 868315D 3 SHEET OF 14

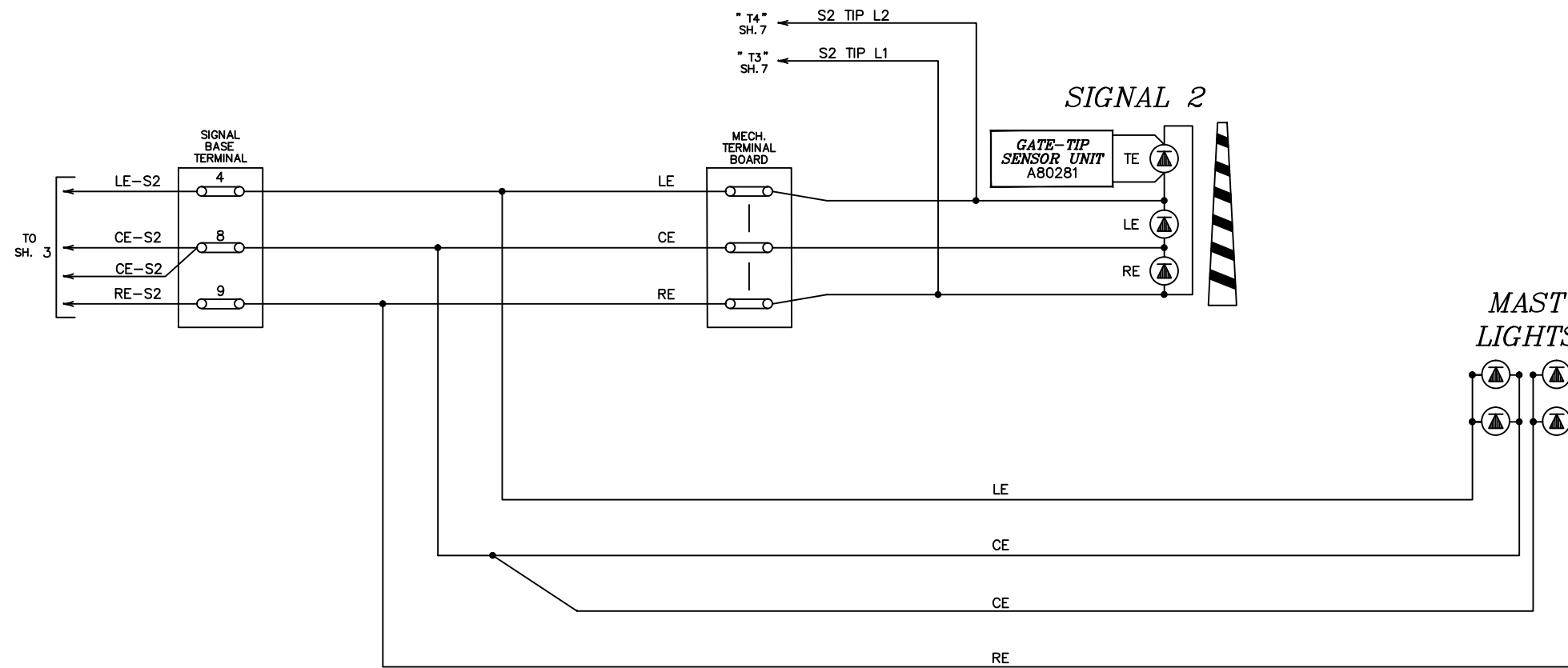


<b>The ALASKA RAILROAD CORPORATION</b>	
P.O. BOX 107500 , ANCHORAGE , ALASKA 99510-7500	
SIGNAL ENGINEERING	DOT 868315D
LAT: 61.563	FAIRVIEW LOOP ROAD
	MP 156.19
LONG: -149.351	RAILROAD-HIGHWAY GRADE CROSSING WARNING SYSTEM
REVISIONS	
DRAWN: AKRR	DWG NO. 868315D
DATE: XX-XX-XX	4 SHEET OF 14

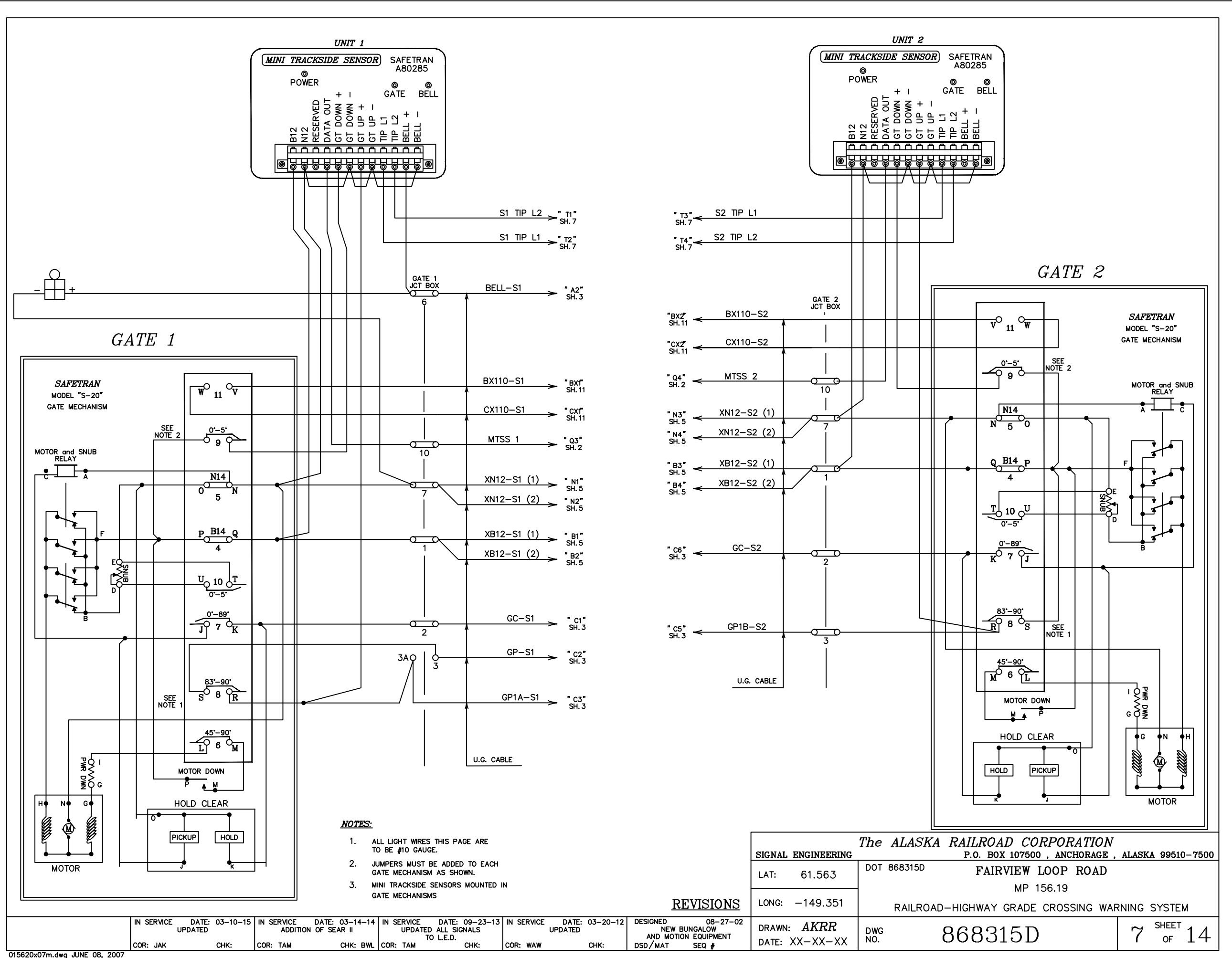
IN SERVICE DATE: 03-10-15 UPDATED	IN SERVICE DATE: 4-24-14 ADDITION OF SEAR II	IN SERVICE DATE: 11-08-13 UPDATED FOR L.E.D.	IN SERVICE DATE: 02-17-11 UPDATED
COR: JAK	COR: TAM	COR: TAM	COR: FWK
CHK:	CHK: BWL	CHK:	CHK:



015620x05m.dwg June 08, 2007				<b>The ALASKA RAILROAD CORPORATION</b> SIGNAL ENGINEERING P.O. BOX 107500 , ANCHORAGE , ALASKA 99510-7500				LAT: 61.563 DOT 868315D FAIRVIEW LOOP ROAD LONG: -149.351 MP 156.19 RAILROAD-HIGHWAY GRADE CROSSING WARNING SYSTEM					
IN SERVICE DATE: 03-10-15 COR: JAK		IN SERVICE DATE: 4-24-14 ADDITION OF SEAR II COR: TAM		IN SERVICE DATE: 11-08-13 UPDATED FOR L.E.D. COR: TAM		IN SERVICE DATE: 02-17-11 UPDATED COR: FWK		REVISIONS DRAWN: AKRR DATE: XX-XX-XX		DWG NO. 868315D		5 SHEET OF 14	



<i>The ALASKA RAILROAD CORPORATION</i>	
SIGNAL ENGINEERING P.O. BOX 107500 , ANCHORAGE , ALASKA 99510-7500	
LAT: 61.563	DOT 868315D FAIRVIEW LOOP ROAD MP 156.19
LONG: -149.351	RAILROAD-HIGHWAY GRADE CROSSING WARNING SYSTEM
REVISIONS IN SERVICE DATE: 03-10-15 COR: JAK IN SERVICE DATE: 4-24-14 COR: TAM IN SERVICE DATE: 11-08-13 COR: TAM IN SERVICE DATE: 02-17-11 COR: FWK	DRAWN: AKRR DATE: XX-XX-XX DWG NO. 868315D SHEET 6 OF 14



- NOTES:**
1. ALL LIGHT WIRES THIS PAGE ARE TO BE #10 GAUGE.
  2. JUMPERS MUST BE ADDED TO EACH GATE MECHANISM AS SHOWN.
  3. MINI TRACKSIDE SENSORS MOUNTED IN GATE MECHANISMS

**The ALASKA RAILROAD CORPORATION**

SIGNAL ENGINEERING      P.O. BOX 107500, ANCHORAGE, ALASKA 99510-7500

LAT: 61.563      DOT 868315D      FAIRVIEW LOOP ROAD

LONG: -149.351      MP 156.19

RAILROAD-HIGHWAY GRADE CROSSING WARNING SYSTEM

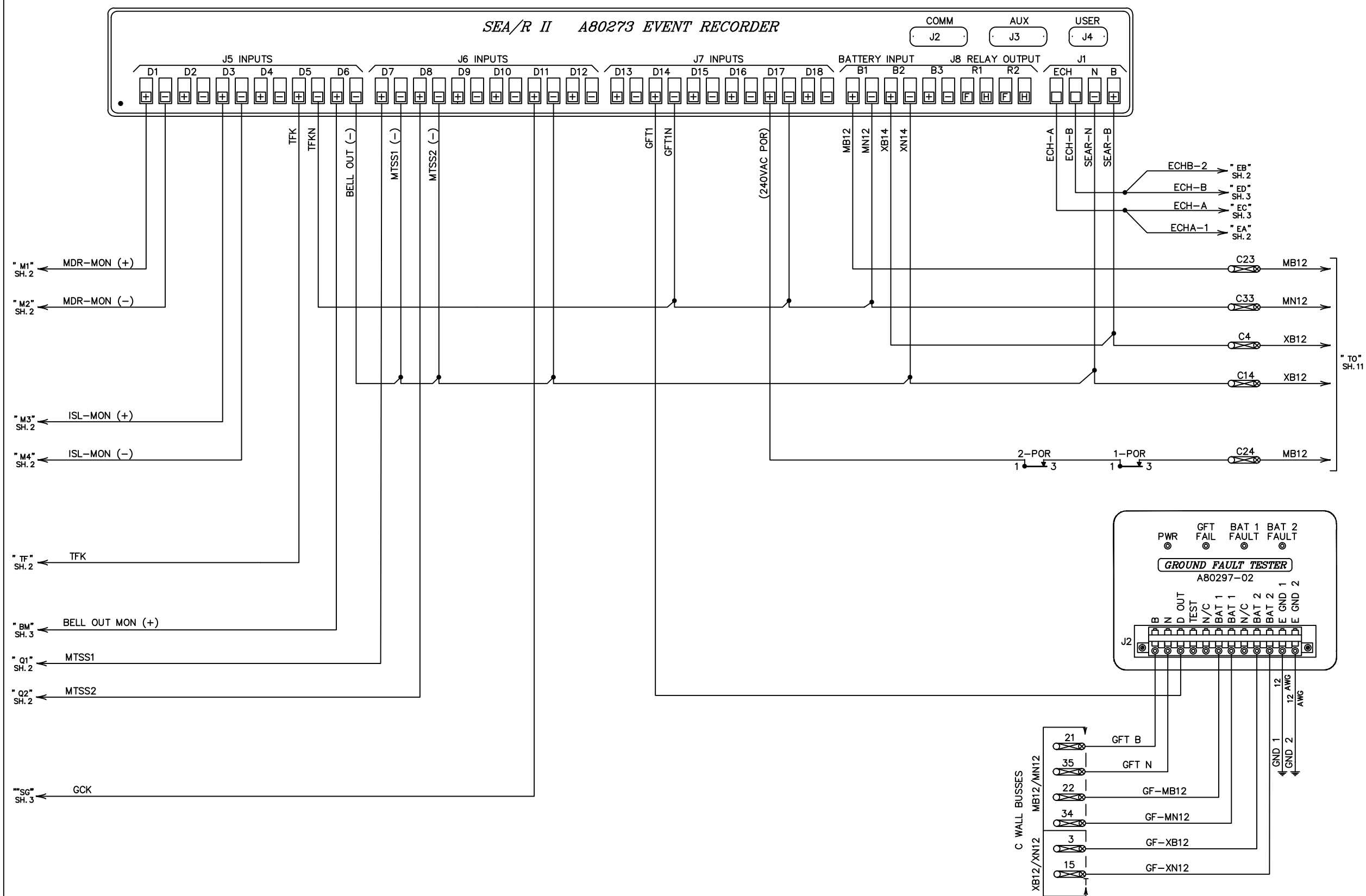
**REVISIONS**

DRAWN: AKRR      DWG NO. 868315D      7 SHEET OF 14

DATE: XX-XX-XX

IN SERVICE DATE: 03-10-15 UPDATED	IN SERVICE DATE: 03-14-14 ADDITION OF SEAR II	IN SERVICE DATE: 09-23-13 UPDATED ALL SIGNALS TO L.E.D.	IN SERVICE DATE: 03-20-12 UPDATED	DESIGNED 08-27-02 NEW BUNGALOW AND MOTION EQUIPMENT DSD/MAT SEQ #
COR: JAK      CHK:	COR: TAM      CHK: BWL	COR: TAM      CHK:	COR: WAW      CHK:	

SEA/R II A80273 EVENT RECORDER



<b>The ALASKA RAILROAD CORPORATION</b>	
SIGNAL ENGINEERING P.O. BOX 107500, ANCHORAGE, ALASKA 99510-7500	
LAT: 61.563	DOT 868315D FAIRVIEW LOOP ROAD
LONG: -149.351	MP 156.19
RAILROAD-HIGHWAY GRADE CROSSING WARNING SYSTEM	
<b>REVISIONS</b>	
IN SERVICE DATE: 03-10-15 UPDATED COR: JAK CHK:	IN SERVICE DATE: 4-24-14 ADDITION OF SEAR II COR: TAM CHK: BWL
IN SERVICE DATE: 11-08-13 UPDATED FOR L.E.D. COR: TAM CHK:	IN SERVICE DATE: 02-17-11 UPDATED COR: FWK CHK:
DRAWN: AKRR DATE: XX-XX-XX	DWG NO. 868315D
8 SHEET OF 14	



TO CONFIGURE SEAR II & SEAR III PRESS SITE SETUP KEY. USE  
ARROW KEYS TO MAKE SELECTION, PRESS ENTER AFTER  
SELECTION HAS BEEN MADE.

### SEAR II PROGRAMMING

PROGRAM MENU QUESTIONS	OPTIONS / RANGE	PROGRAM
SITE NAME?	STREET NAME	FAIRVIEW LOOP ROAD
MILE POST?	MILEAGE	156.20
DOT/CROSSING ID #?		868 315 D
TESTER TYPE?	CROSSING, WAYSIDE	CROSSING
AUTOMATIC DST ADJUSTMENT?	YES / NO	YES
TIME ZONE?	EASTERN,CENTRAL,MOUNTAIN, PACIFIC,ALASKA,HAWAII, ATLANTIC,SASKATCHEWAN, NEW FOUNDLAND	ALASKA
GMT OFFSET		N/A
DATE/TIME?	CURRENT DATE/TIME	
DATE FORMAT?	mm-dd-yyy, dd-mm-yyyy	dd-mm-yyyy
TEMPERATURE FORMAT?	FAHRENHEIT,CELSIUS	FAHRENHEIT
INDICATE HOLDOFF		0
SITE TYPE?	NO COM, BULLHORN,DIALUP, NODE,COLLECTOR	COLLECTOR
SITE ATCS ADDRESS?	7.RRR.LLL.GGG.99.01	70051003159901
OFFICE ATCS ADDRESS?	2.RRR.NN.DDDD	2005019101
OFFICE SITE ATCS ADDRESS? (WHEN SITE TYPE = NODE)	7.RRR.LLL.GGG.99.01	N/A
BACKUP SITE ATCS ADDRESS 1 (WHEN SITE TYPE = NODE)	7.RRR.LLL.GGG.99.01	N/A
BACKUP SITE ATCS ADDRESS 2 (WHEN SITE TYPE = NODE)	7.RRR.LLL.GGG.99.01	N/A
POLL ID? (WHEN SITE TYPE = COLLECTOR)	1-99	1
GEN/ATCS MODE? (WHEN SITE TYPE = COLLECTOR)	NORMAL, EXTENDED	GEN/ATCS
XID DISABLED? (WHEN SITE TYPE = COLLECTOR)	YES, NO	YES
OFFICE COMM. DEVICE? (WHEN SITE TYPE = COLLECTOR)	DIRECT (RS232) MCM (RS232) MCM (ECHELON) SPREAD SPEC (ECHELON) DIAL MODEM (RS232) S200 RADIO (RS422)	DIAL MODEM (RS232)
OFFICE COMM. PORT (WHEN SITE TYPE = RS232 OR RS422)	AUX, COMM	AUX
MCM ADDRESS (WHEN OFFICE COMM DEVICE = MCM)		N/A
OFFICE PHONE NUMBER (WHEN OFFICE COMM DEVICE = DIAL MODEM)	PHONE NUMBER OF WAMS	192.168.18.45
INIT STRING (WHEN OFFICE COMM DEVICE = DIAL MODEM)	OPTIONAL HAYES MODEM INITIALIZATION STRING	AT
FIELD COMM. DEVICE?	VHF COMM. (ECHELON), VHF COM.(RS232), SPREAD SPECTRUM(ECH), SPREAD SPECTRUM(RS232)	LOCATION SPECIFIC
USER PORT	BAUD,DATA BITS,PARITY, STOP BITS,FLOW CONTROL	57600,8,N,1,N
AUX PORT	BAUD,DATA BITS,PARITY, STOP BITS,FLOW CONTROL	9600,8,N,1,H
COMM PORT BAUD?	BAUD,DATA BITS,PARITY, STOP BITS,FLOW CONTROL	9600,8,N,1,N

PROGRAM MENU QUESTIONS	OPTIONS / RANGE	PROGRAM SEAR III
RESET NAMES/MODULES?	YES / NO	YES
RAILROAD NUMBER	1-999	005
CROSSING CONFIGURATION ?	STANDARD,ISLAND ONLY SPLIT GATE, LARGE REMOTE,CP COLLECTOR	STANDARD
NUMBER OF XR INPUTS	0-4	1
NUMBER OF ISL INPUTS	0-4	1
CONSTANT WARNING DEVICE	NONE, GCP, OTHER	GCP
TOTAL NUMBER OF GCP NODES	1-7	2
NUMBER OF REDUNDANT GCP'S	0-3	NONE
CROSSING CONTROLLER 1	NONE, SCC IIIA/PLUS SSCCIV, SSCCII, SSCCIII OTHER	OTHER
CROSSING CONTROLLER 2	NONE, SCC IIIA/PLUS SSCCIV, SSCCII, SSCCIII OTHER	NONE
POK2	NO/YES	YES
TLITE FUNCTION	TLITE ONLY,TLITE/POK2	TLITE/POK2
MAIN/STANDBY	NO/YES	YES
AUXILARY TRACKS	0-2	0
ENTRANCE GATES	0-4	2
EXIT GATES	0-2	0
GATES NOT STARTING TIME (SECONDS)	10-20	15
NUMBER OF UAX INPUTS	0-2	0
BATTERY BANKS	1-6	2
PREMPTION	NORMAL,ADVANCED,NO	NO
VHF COMMUNICATOR	YES / NO	NO
DTMF ACTIVATION	YES / NO	N/A
ACTIVATION CODE	1-999	N/A
ACTIVATION TIMEOUT(SEC)	30-600	N/A
ILOD MODULES	0-4	1
ANY LED BULBS USED	NO / YES	YES
AUTO INSPECTIONS	YES / NO	NO
BELL SENSORS	0-8	1
BELL SENSOR INPUT 4	NO / YES	NO
BELL SENSOR INPUT 5	NO / YES	NO
BELL SENSOR INPUT 6	NO / YES	NO
BELL SENSOR INPUT 7	NO / YES	NO
BELL SENSOR INPUT 8	NO / YES	NO
BELL SENSOR INPUT 9	NO / YES	NO
BELL SENSOR INPUT 10	NO / YES	NO
BELL SENSOR INPUT 11	NO / YES	NO
BELL ON	GATES LOWERING, MOVING, ALWAYS	ALWAYS
GATE TIP SENSORS	YES / NO	YES
GFT'S	YES / NO	YES
BATTERIES ON GFT'S	1-2	2
VHF VOICE CHANNEL	1-8	N/A
VHF DATA CHANNEL	1-8	N/A
FULL APPROACH MOVE ALARMS	ACTIVATE, DO NOT ACTIVATE	DO NOT ACTIVATE

PROGRAM MENU QUESTIONS	PROGRAM
EDIT DIGITAL INPUTS	NO
EDIT BATTERIES	NO
EDIT RELAYS	NO
EDIT INDICATOR LEDS	NO
EDIT TEST LEDS	NO
EDIT ILOD SENSORS	NO
EDIT VHF SETTINGS	NO

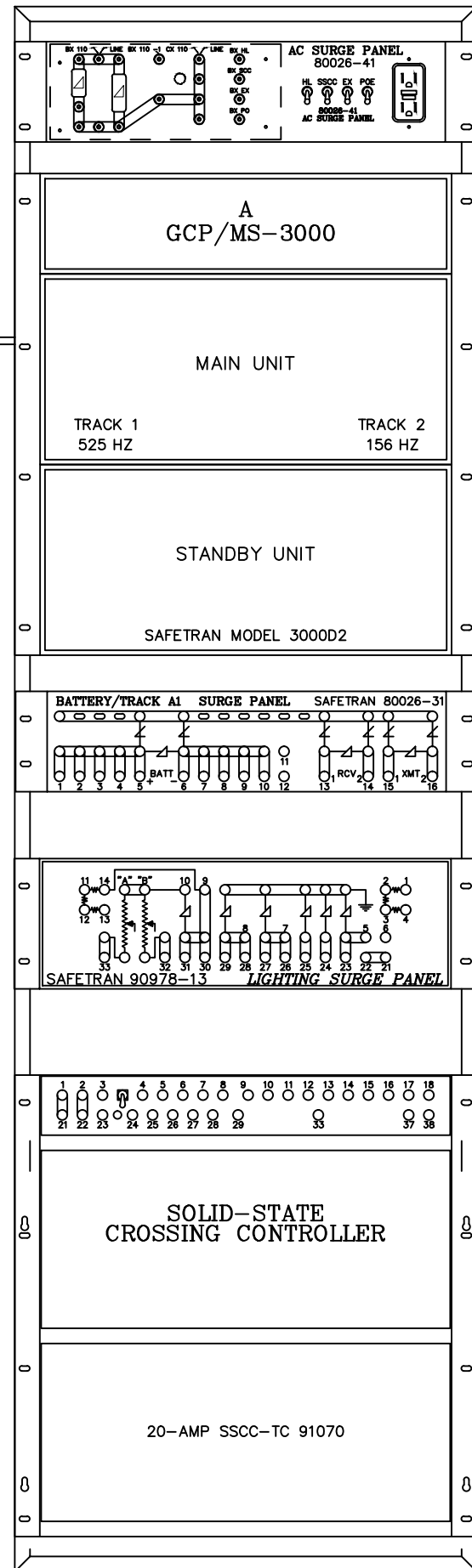
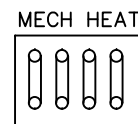
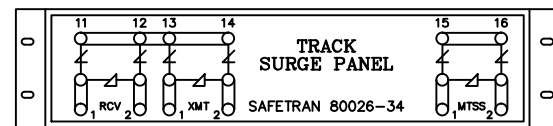
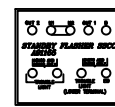
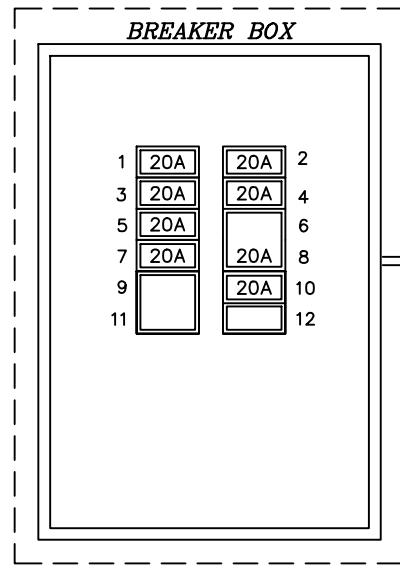
YOU WILL NOW SEE A MESSAGE  
CONTINUE TO NEXT PROGRAM MENU QUESTIONS.

YOU WILL NOW SEE A MESSAGE "PLEASE WAIT COMPILING STAGE 1"  
CONTINUE TO NEXT PROGRAM MENU QUESTIONS.

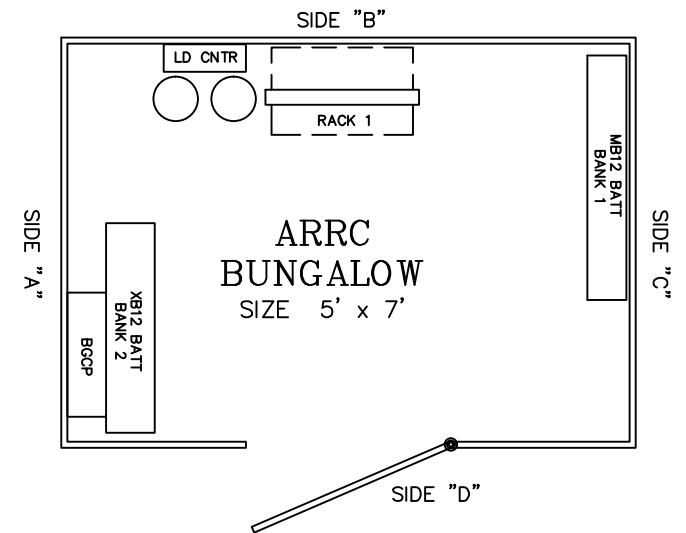
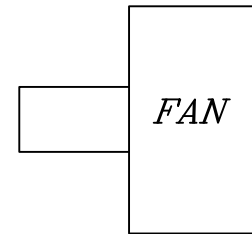
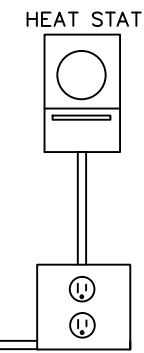
<b>The ALASKA RAILROAD CORPORATION</b>	
SIGNAL ENGINEERING P.O. BOX 107500 , ANCHORAGE , ALASKA 99510-7500	
LAT: 61.563	DOT 868315D FAIRVIEW LOOP ROAD MP 156.19
LONG: -149.351	RAILROAD-HIGHWAY GRADE CROSSING WARNING SYSTEM
DRAWN: AKRR DATE: XX-XX-XX	DWG NO. 868315D
9 SHEET OF 14	

#### REVISIONS

IN SERVICE DATE: 03-10-15 UPDATED	IN SERVICE DATE: 4-24-14 ADDITION OF SEAR II	IN SERVICE DATE: 11-08-13 UPDATED FOR L.E.D.	IN SERVICE DATE: 02-17-11 UPDATED
COR: JAK CHK:	COR: TAM CHK: BWL	COR: TAM CHK:	COR: FWK CHK:



SIDE "B"

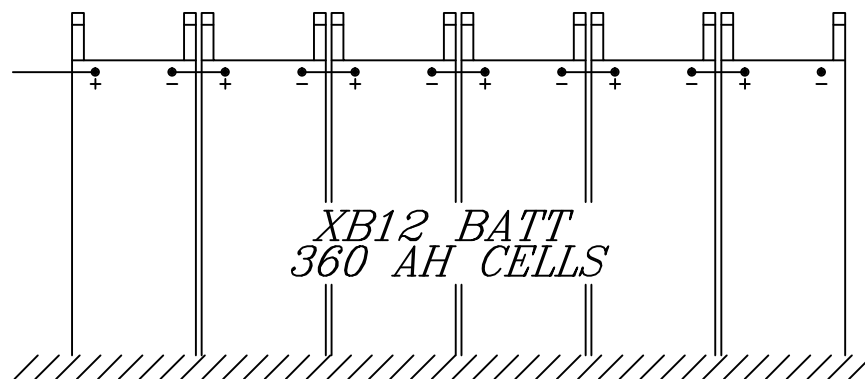
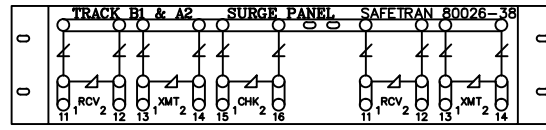


**REVISIONS**

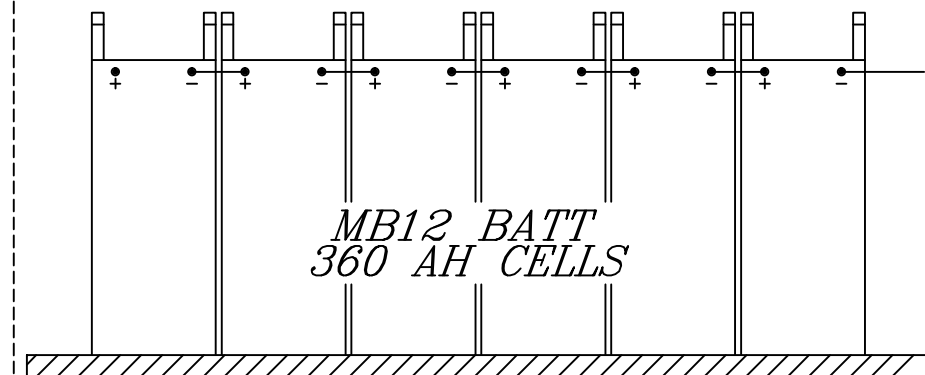
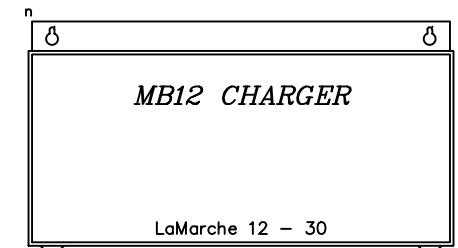
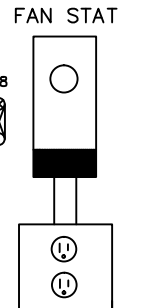
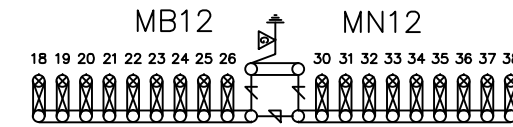
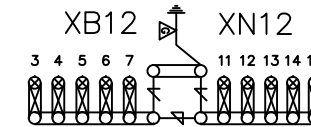
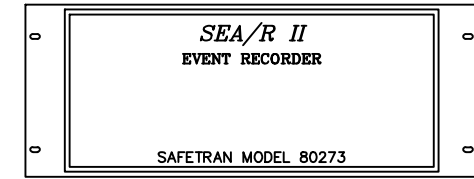
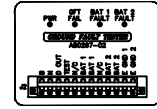
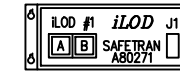
IN SERVICE DATE: 03-10-15 UPDATED	IN SERVICE DATE: 4-24-14 ADDITION OF SEAR II	IN SERVICE DATE: 11-08-13 UPDATED FOR L.E.D.	IN SERVICE DATE: 02-17-11 UPDATED
COR: JAK	CHK: TAM	CHK: BWL	COR: FWK

<b>The ALASKA RAILROAD CORPORATION</b>	
SIGNAL ENGINEERING	P.O. BOX 107500, ANCHORAGE, ALASKA 99510-7500
LAT: 61.563	DOT 868315D FAIRVIEW LOOP ROAD
LONG: -149.351	MP 156.19
RAILROAD-HIGHWAY GRADE CROSSING WARNING SYSTEM	
DRAWN: AKRR DATE: XX-XX-XX	DWG NO. 868315D
10 SHEET OF 14	

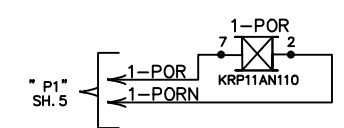
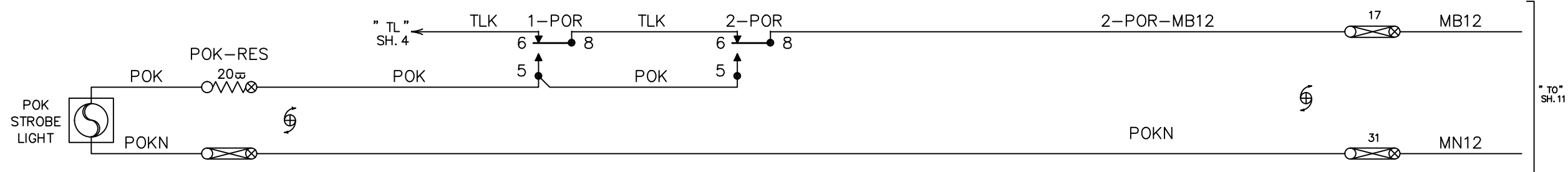
SIDE "A"



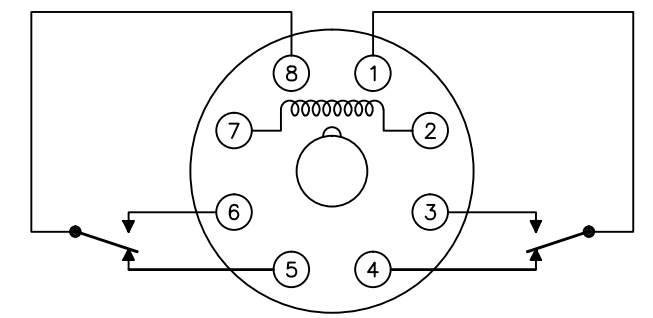
SIDE "C"



<b>The ALASKA RAILROAD CORPORATION</b>	
SIGNAL ENGINEERING P.O. BOX 107500, ANCHORAGE, ALASKA 99510-7500	
LAT: 61.563	DOT 868315D FAIRVIEW LOOP ROAD MP 156.19
LONG: -149.351	RAILROAD-HIGHWAY GRADE CROSSING WARNING SYSTEM
<b>REVISIONS</b> IN SERVICE DATE: 03-10-15 UPDATED COR: JAK CHK: IN SERVICE DATE: 4-24-14 ADDITION OF SEAR II COR: TAM CHK: BWL IN SERVICE DATE: 11-08-13 UPDATED FOR L.E.D. COR: TAM CHK: IN SERVICE DATE: 02-17-11 UPDATED COR: FWK CHK:	DRAWN: <b>AKRR</b> DATE: XX-XX-XX DWG NO. <b>868315D</b>
11 SHEET OF 14	



POR  
POTTER & BRUMFIELD RELAY  
KRPA11 SERIES

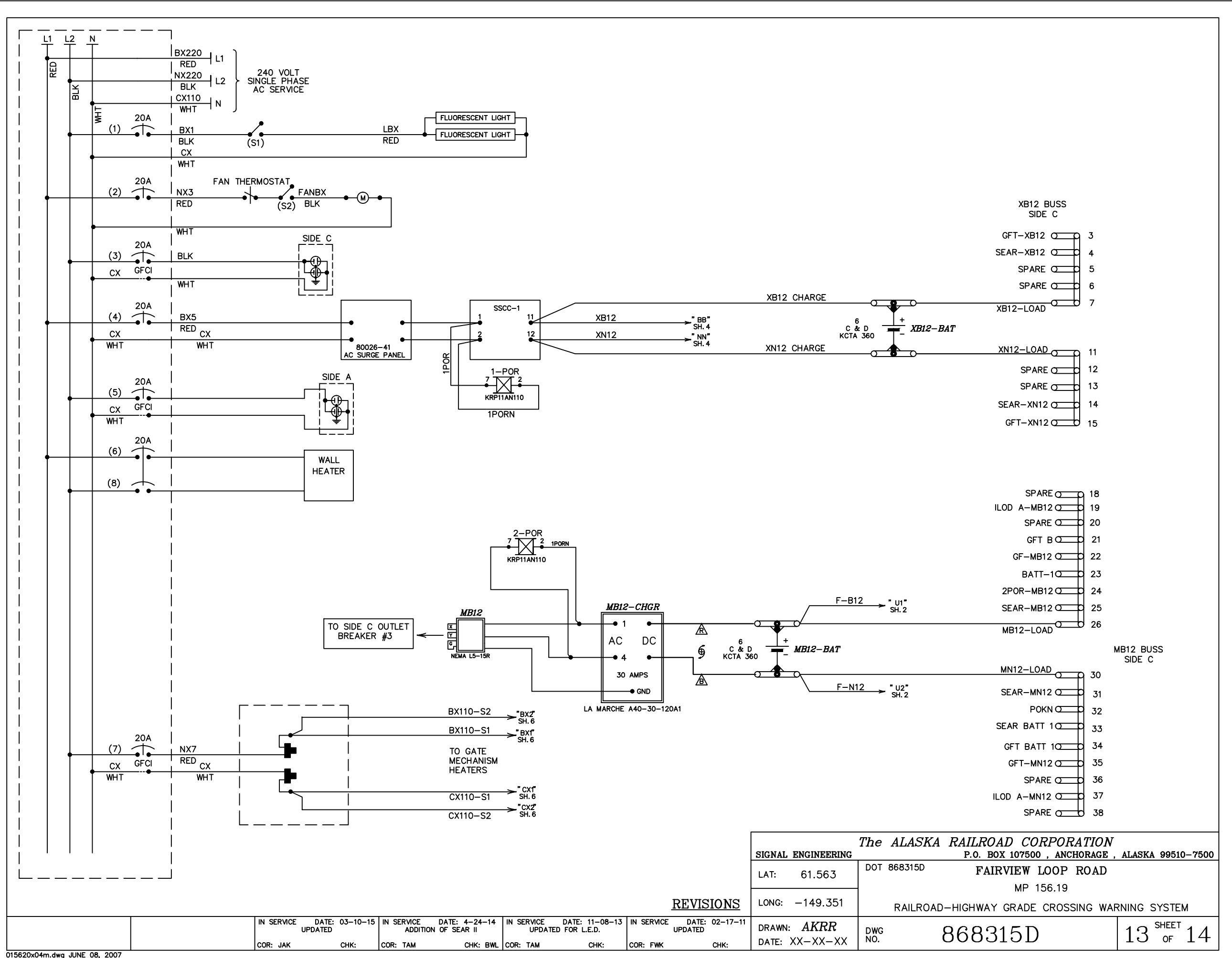


POWER OFF RELAY CIRCUIT  
DETAIL

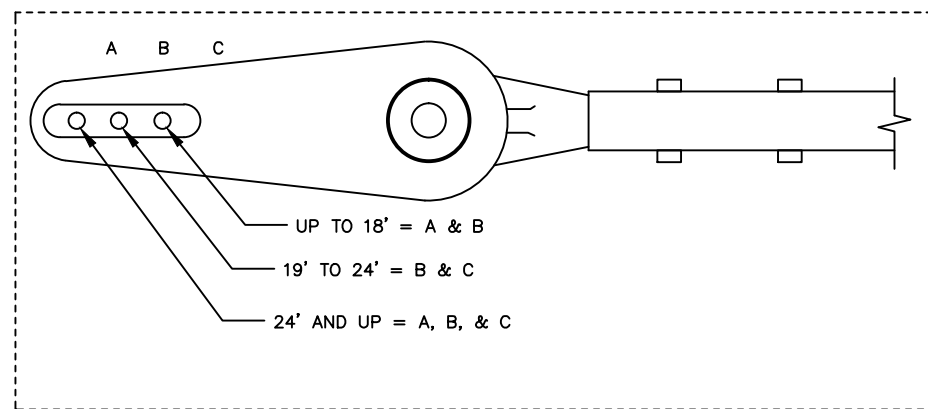
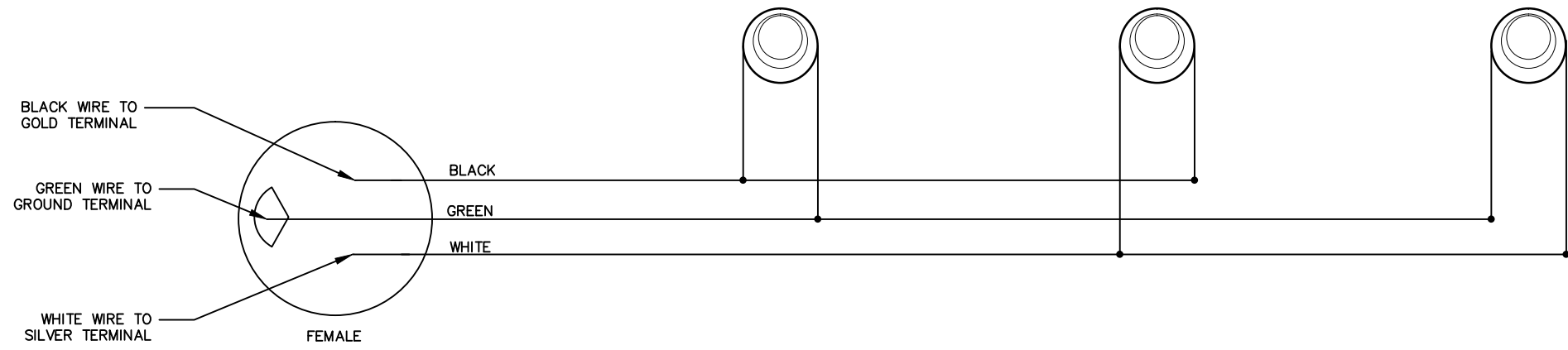
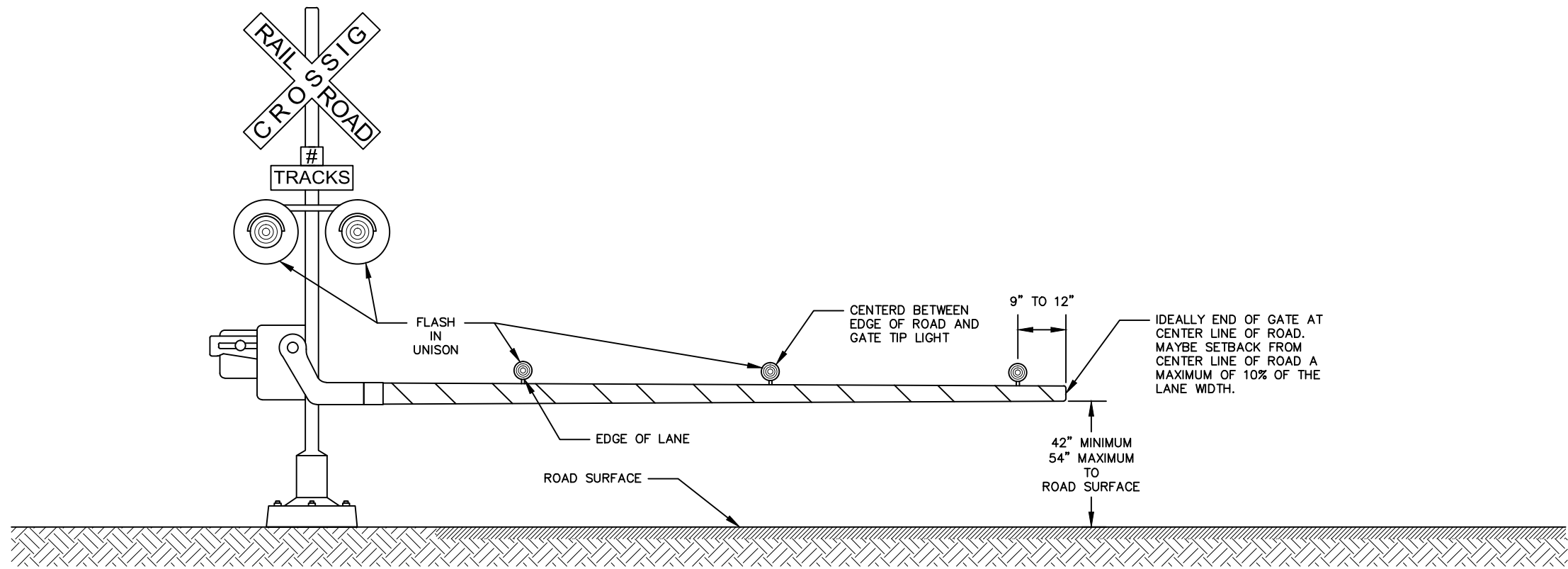
REVISIONS

IN SERVICE DATE: 03-10-15 UPDATED	IN SERVICE DATE: 4-24-14 ADDITION OF SEAR II	IN SERVICE DATE: 11-08-13 UPDATED FOR L.E.D.	IN SERVICE DATE: 02-17-11 UPDATED
COR: JAK CHK:	COR: TAM CHK: BWL	COR: TAM CHK:	COR: FWK CHK:

<i>The ALASKA RAILROAD CORPORATION</i>	
SIGNAL ENGINEERING P.O. BOX 107500 , ANCHORAGE , ALASKA 99510-7500	
LAT: 61.563	DOT 868315D FAIRVIEW LOOP ROAD MP 156.19
LONG: -149.351	RAILROAD-HIGHWAY GRADE CROSSING WARNING SYSTEM
DRAWN: AKRR DATE: XX-XX-XX	DWG NO. 868315D
	12 SHEET OF 14



<b>The ALASKA RAILROAD CORPORATION</b>	
SIGNAL ENGINEERING P.O. BOX 107500, ANCHORAGE, ALASKA 99510-7500	
LAT: 61.563	DOT 868315D FAIRVIEW LOOP ROAD
LONG: -149.351	MP 156.19
RAILROAD-HIGHWAY GRADE CROSSING WARNING SYSTEM	
IN SERVICE DATE: 03-10-15 UPDATED COR: JAK CHK:	IN SERVICE DATE: 4-24-14 ADDITION OF SEAR II COR: TAM CHK: BWL
IN SERVICE DATE: 11-08-13 UPDATED FOR L.E.D. COR: TAM CHK:	IN SERVICE DATE: 02-17-11 UPDATED COR: FWK CHK:
DRAWN: AKRR DATE: XX-XX-XX	DWG NO. 868315D
13 SHEET OF 14	



NOTE:  
USE BASE TERMINALS  
4 - 8 - 9

<i>The ALASKA RAILROAD CORPORATION</i>	
SIGNAL ENGINEERING P.O. BOX 107500 , ANCHORAGE , ALASKA 99510-7500	
LAT: 61.563	DOT 868315D FAIRVIEW LOOP ROAD MP 156.19
LONG: -149.351	RAILROAD-HIGHWAY GRADE CROSSING WARNING SYSTEM
REVISIONS	DRAWN: AKRR DATE: XX-XX-XX
IN SERVICE DATE: 03-10-15 UPDATED COR: JAK CHK:	IN SERVICE DATE: 4-24-14 ADDITION OF SEAR II COR: TAM CHK: BWL
IN SERVICE DATE: 11-08-13 UPDATED FOR L.E.D. COR: TAM CHK:	IN SERVICE DATE: 02-17-11 UPDATED COR: FWK CHK:
DWG NO. 868315D	
14 SHEET OF 14	