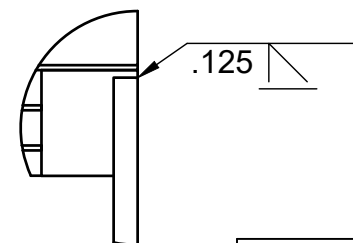
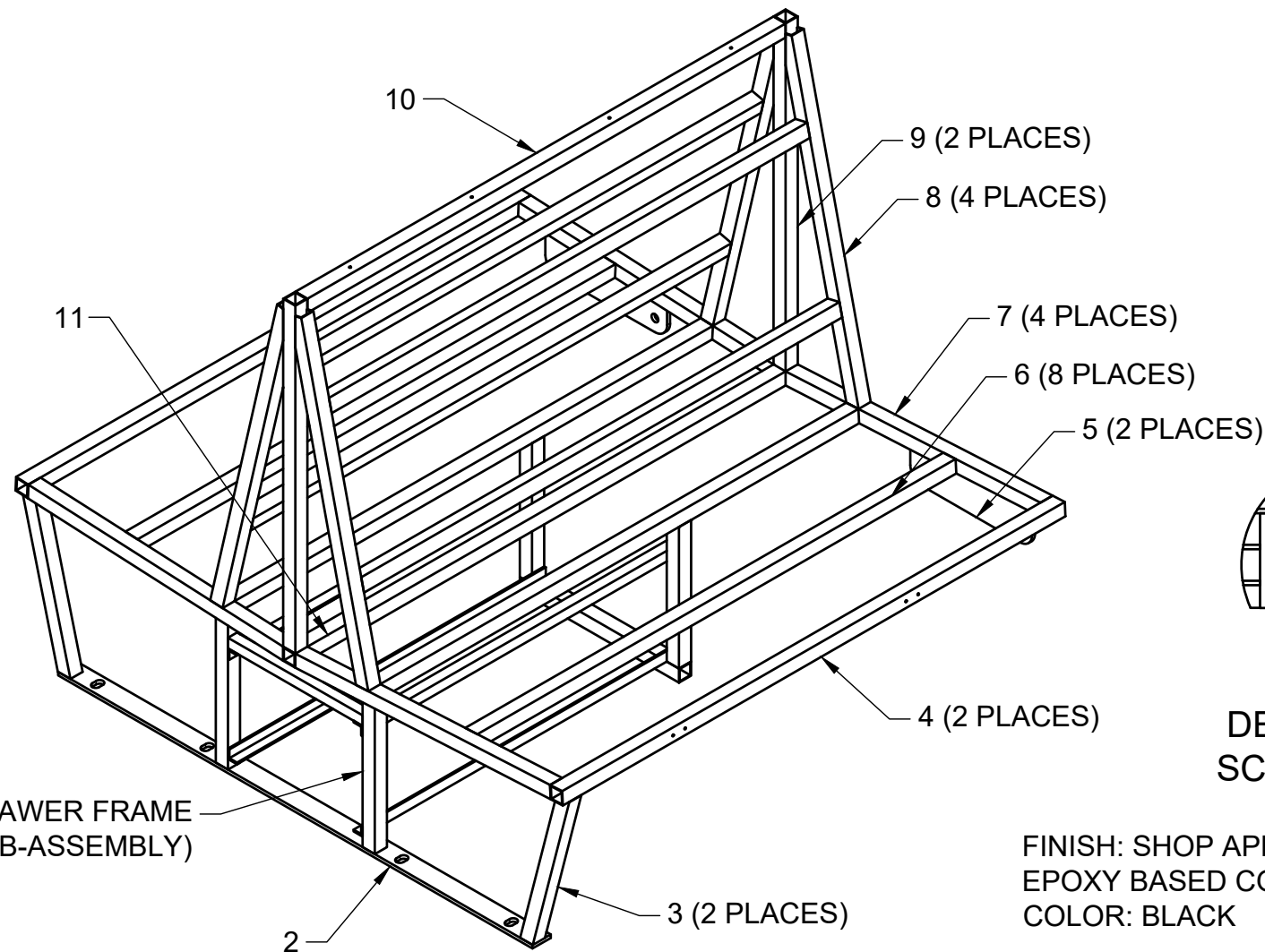
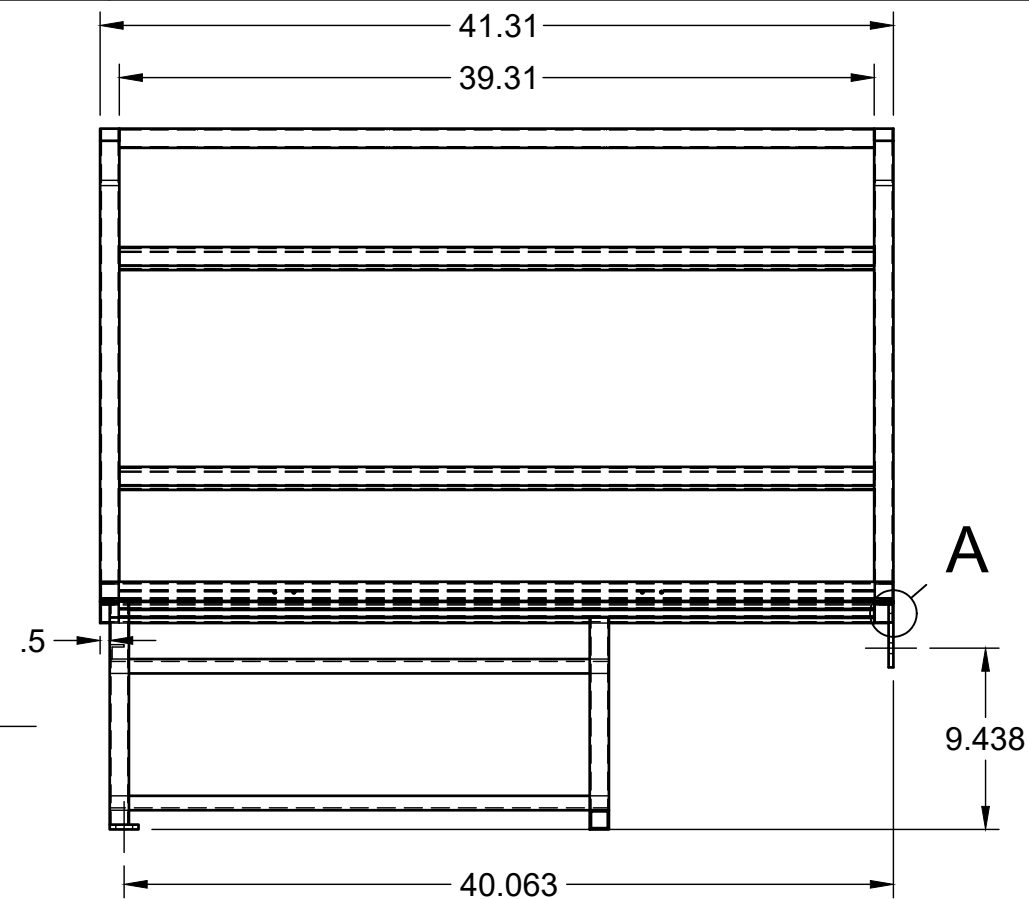


ARR 301 DOUBLE SEAT FRAME BOM		
ITEM	QTY	DESCRIPTION
1	1	DRAWER FRAME SUB-ASSEMBLY, SEE SHEET 2
2	1	025" x 1.5" 1018 CARBON STEEL BAR, 39" LONG, SEE SHEET 3
3	2	'ARR 301 SINGLE SEAT FRAME' ITEM 3
4	2	'ARR 301 SINGLE SEAT FRAME' ITEM 4
5	2	'ARR 301 SINGLE SEAT FRAME' ITEM 5
6	8	'ARR 301 SINGLE SEAT FRAME' ITEM 6
7	4	'ARR 301 SINGLE SEAT FRAME' ITEM 7
8	4	'ARR 301 SINGLE SEAT FRAME' ITEM 8
9	2	'ARR 301 SINGLE SEAT FRAME' ITEM 9
10	1	'ARR 301 SINGLE SEAT FRAME' ITEM 10
11	1	'ARR 301 SINGLE SEAT FRAME' ITEM 11



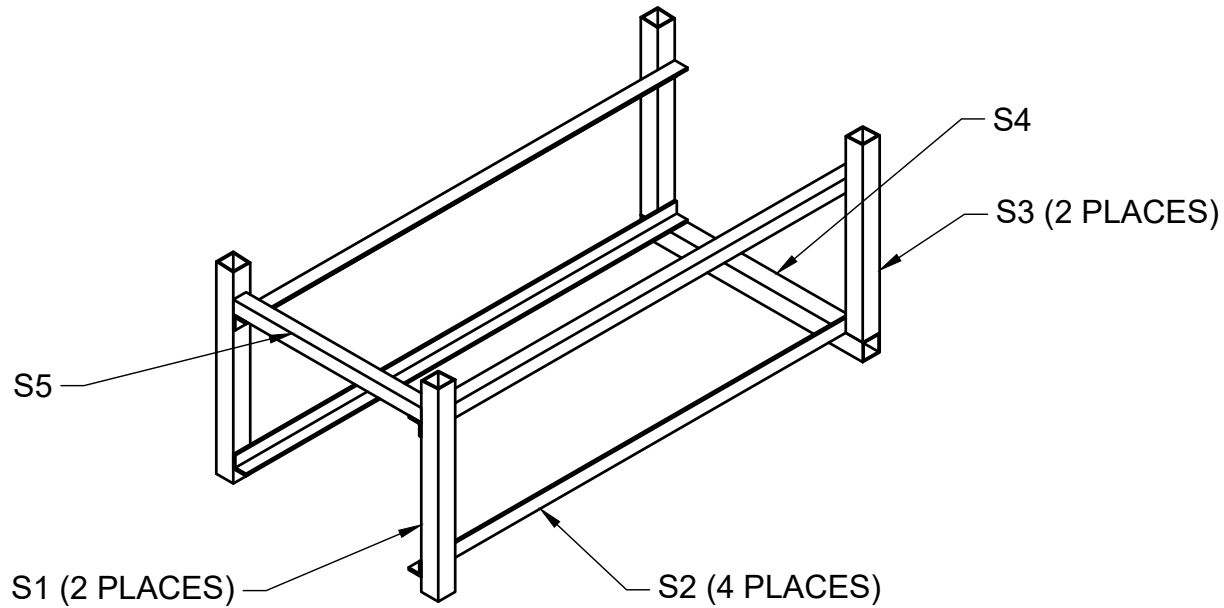
DETAIL A
SCALE 1:2

FINISH: SHOP APPLIED
EPOXY BASED COATING.
COLOR: BLACK

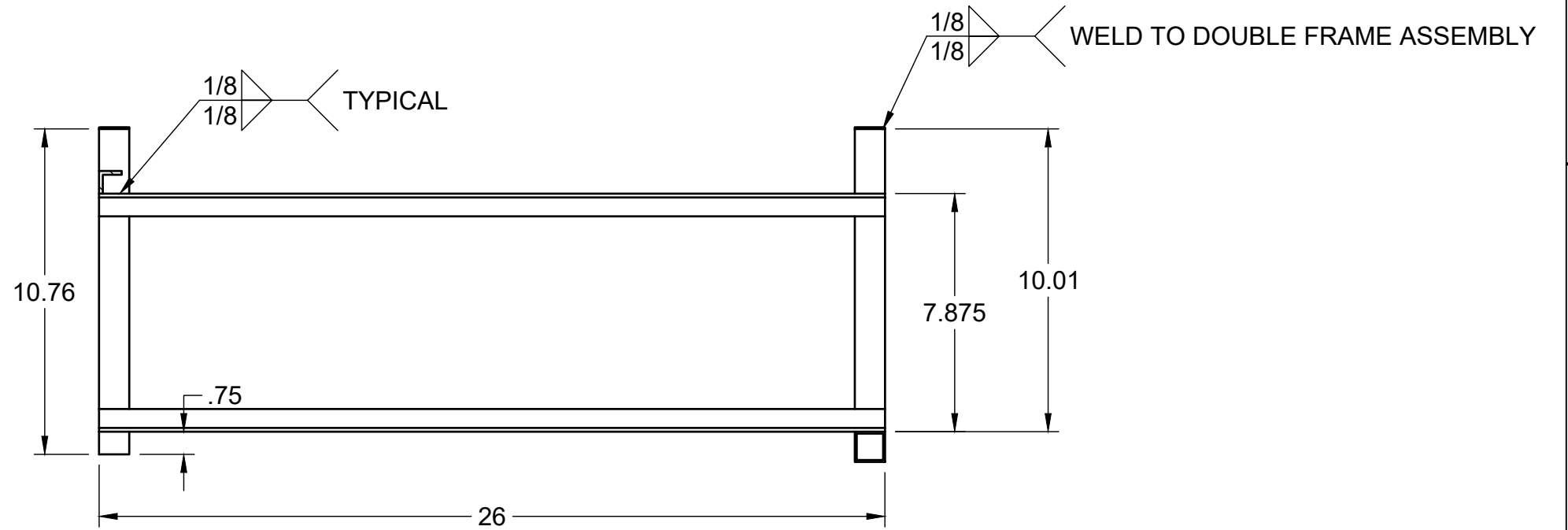
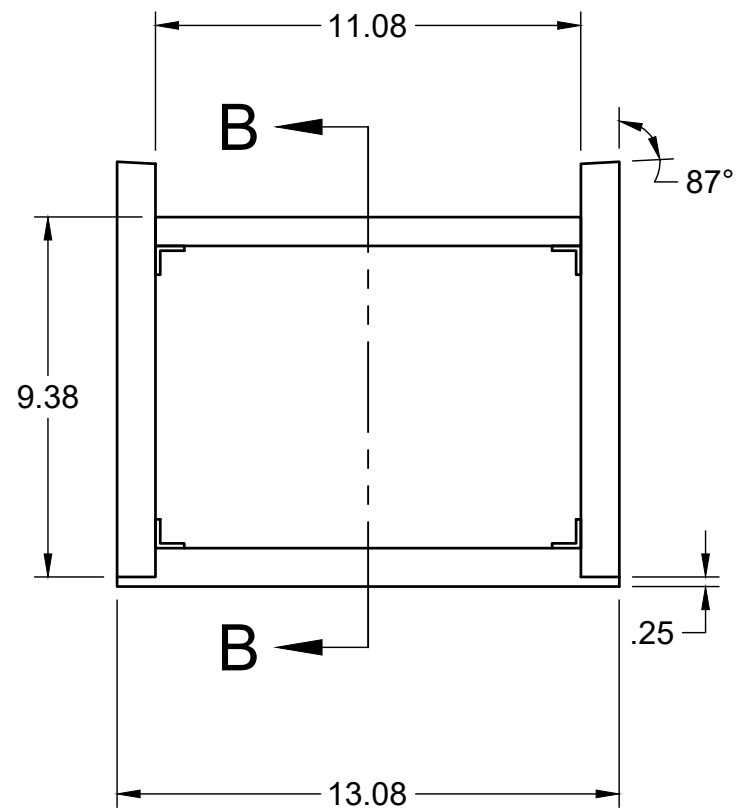


ALASKA RAILROAD
CORPORATION
ENGINEERING SERVICES

PROJECT			MOTIVE POWER AND EQUIPMENT PASSENGER COACHES	
TITLE				
ARR 301 DOUBLE SEAT FRAME FRAME ASSEMBLY				
APPROVED ARRC	SCALE 1:20	SHEET 1/3		
CHECKED ARRC	DATE 9/14/2022			
DRAWN CDL				



ARR 301 DOUBLE SEAT DRAWER FRAME SUB-ASSEMBLY		
ITEM	QTY	DESCRIPTION
S1	2	1"x0.0625" A36 MILD STEEL TUBE
S2	4	0.75"x0.125" A36 CARBON STEEL ANGLE
S3	2	1"x0.0625" A36 MILD STEEL TUBE
S4	1	1"x0.0625" A36 MILD STEEL TUBE
S5	1	0.75"x0.125" A36 CARBON STEEL ANGLE

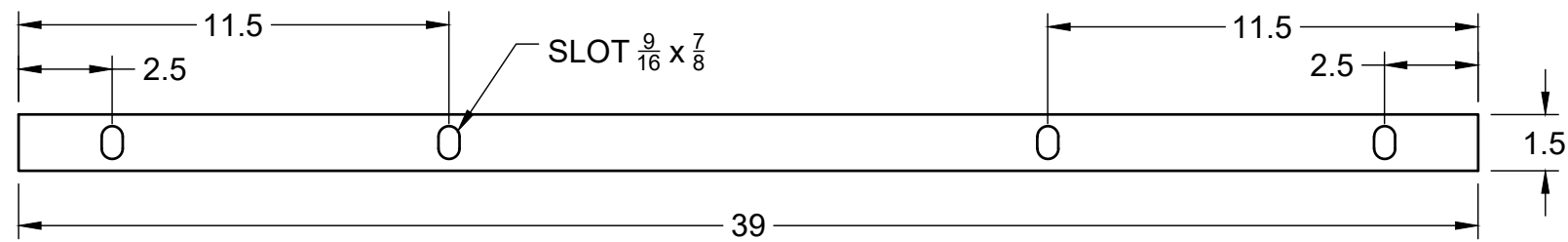


SECTION B-B
SCALE 1:5



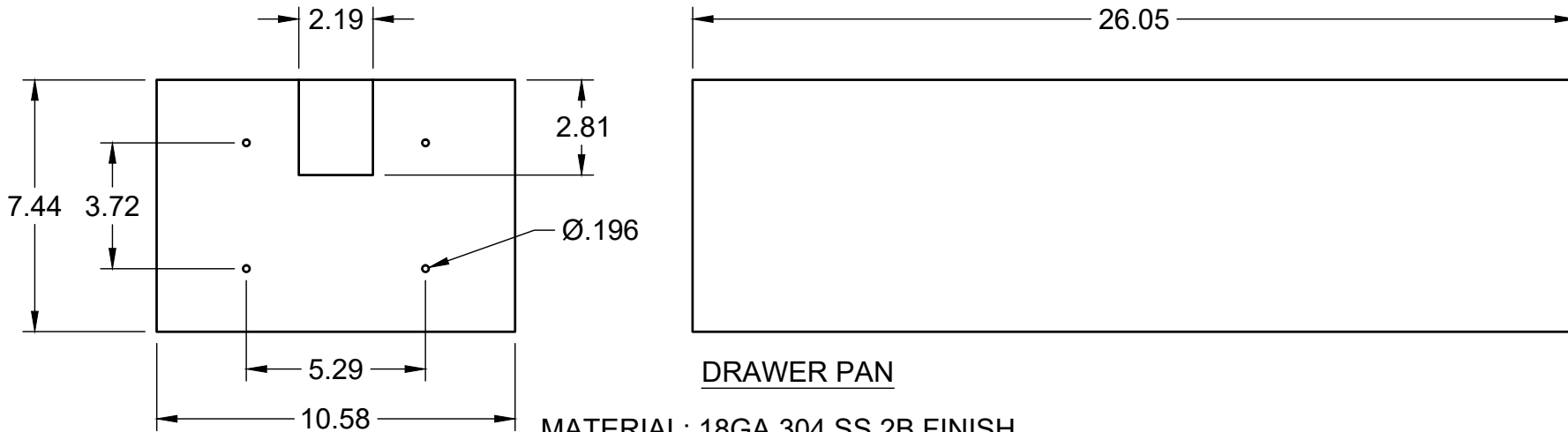
ALASKA RAILROAD
CORPORATION
ENGINEERING SERVICES

PROJECT MOTIVE POWER AND EQUIPMENT PASSENGER COACHES		
TITLE ARR 301 DOUBLE SEAT FRAME DRAWER FRAME SUB-ASSEMBLY		
APPROVED ARRC	SCALE 1:5	SHEET 2/3
CHECKED ARRC	DATE 9/14/2022	
DRAWN CDL		



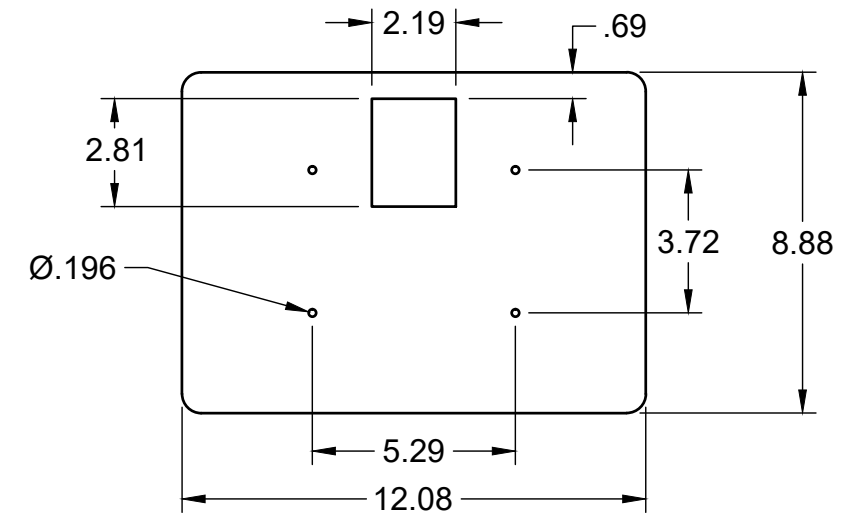
ITEM 2 - TOP VIEW

FROM SHEET: 1
 MATERIAL: 0.25" x 1.5" 1018 CARBON STEEL BAR



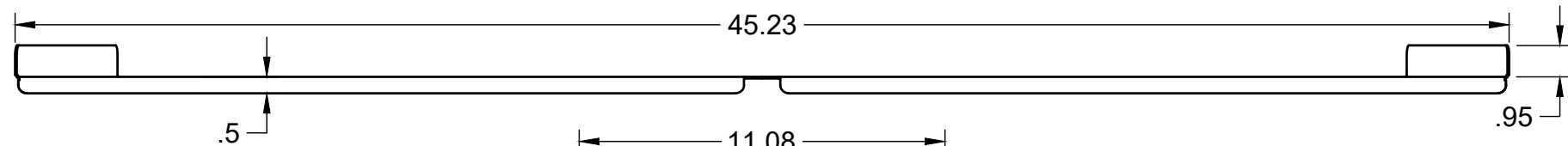
DRAWER PAN

MATERIAL: 18GA 304 SS 2B FINISH
 ALL SEAMS WELDED
 QTY (1) PER ASSEMBLY



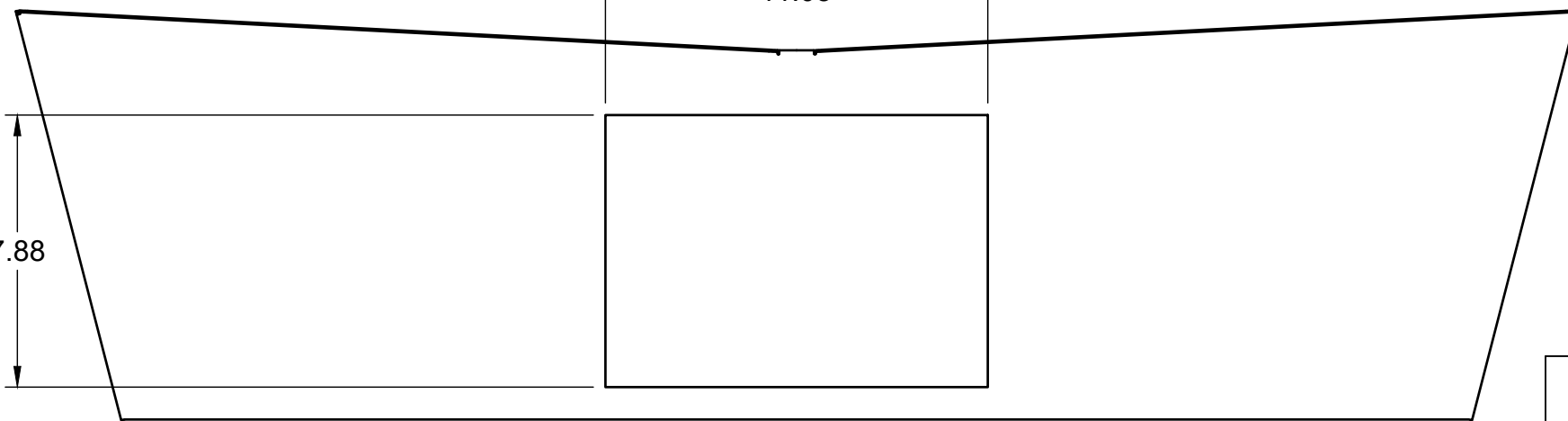
DRAWER FACE

MATERIAL: 18GA 304 SS #4 BRUSH FINISH
 PN ARR-301-0003
 SEE DXF FILE FOR FLAT PATTERN SHAPE
 QTY (1) PER ASSEMBLY



FRAME EDGE TRIM - SEE ARR SINGLE SEAT FRAME SHEET 3

MATERIAL: 18GA 304 SS #4 BRUSH FINISH
 PN ARR-301-0001
 SEE DXF FILE FOR FLAT PATTERN SHAPE
 QTY (2) PER ASSEMBLY



FRAME SIDE TRIM

MATERIAL: 18GA 304 SS #4 BRUSH FINISH
 PN ARR-301-0004
 SEE DXF FILE FOR FLAT PATTERN SHAPE
 QTY (1) PER ASSEMBLY



ALASKA RAILROAD
 CORPORATION
 ENGINEERING SERVICES

PROJECT			MOTIVE POWER AND EQUIPMENT PASSENGER COACHES
TITLE			ARR 301 DOUBLE SEAT FRAME ITEM FABRICATION
APPROVED ARRC	SCALE 1:5	SHEET 3/3	
CHECKED ARRC	DATE 9/14/2022		
DRAWN CDL			