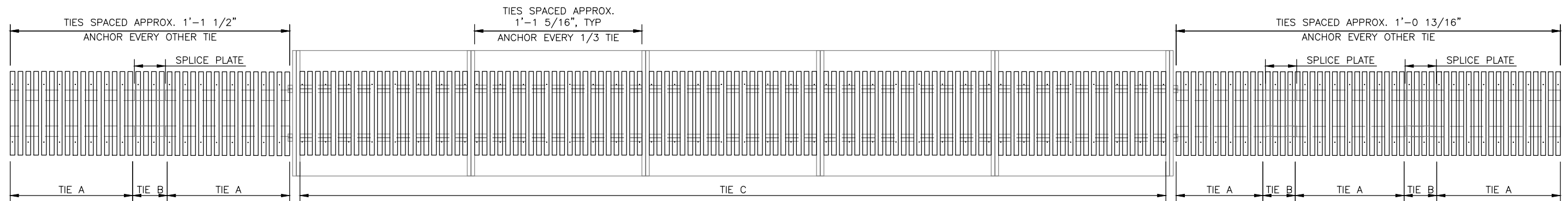


A ELEVATION
1 SCALE: 1"=15'



SPAN 1-36 TIES:
TIE A - 8"x10"x12' - 32 EA.
TIE B - 8"x10"x12' - 4 EA

SPAN 2-110 TIES:
TIE C - 8"x12"x12' - 22 PER PANEL

SPAN 3-52 TIES:
TIE A - 8"x10"x12' - 44 EA.
TIE B - 8"x10"x12' - 8 EA

B PLAN VIEW
1 SCALE: 1"=15'

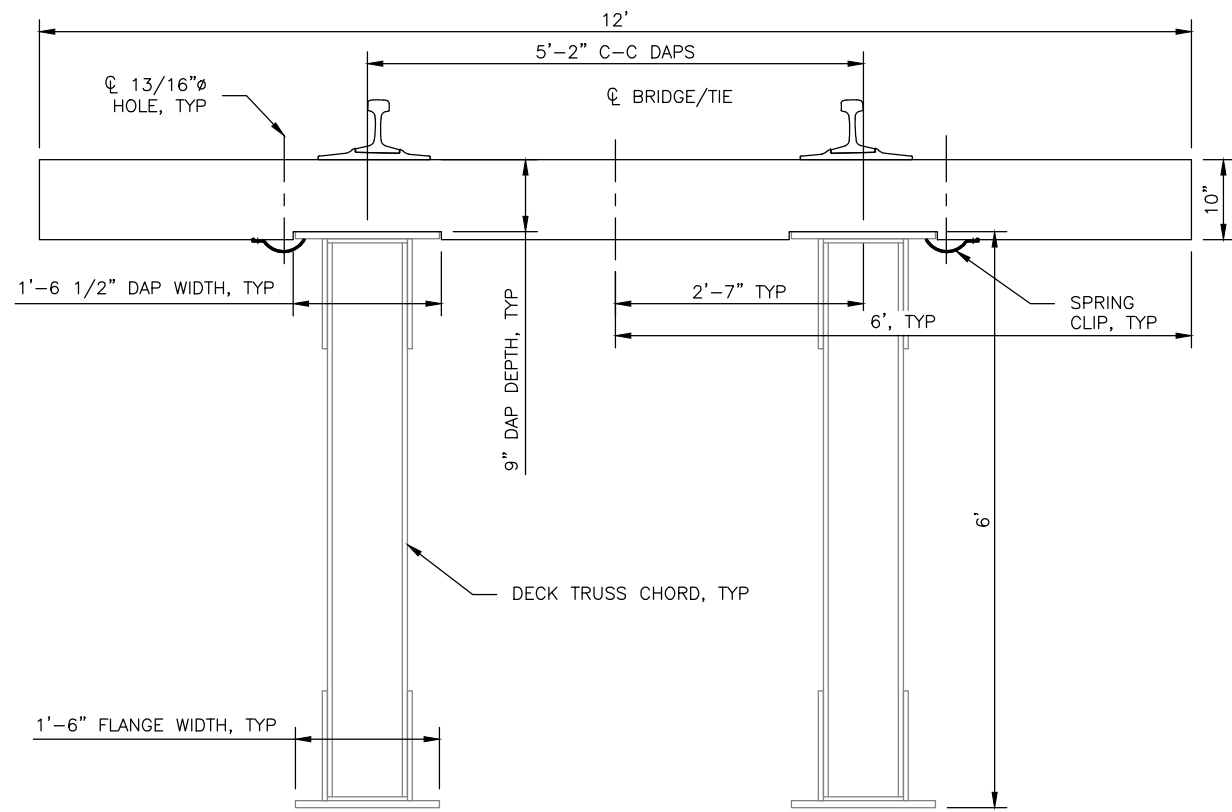


ALASKA RAILROAD CORPORATION
ENGINEERING SERVICES
P.O. BOX 107500, ANCHORAGE, ALASKA 99510-7500

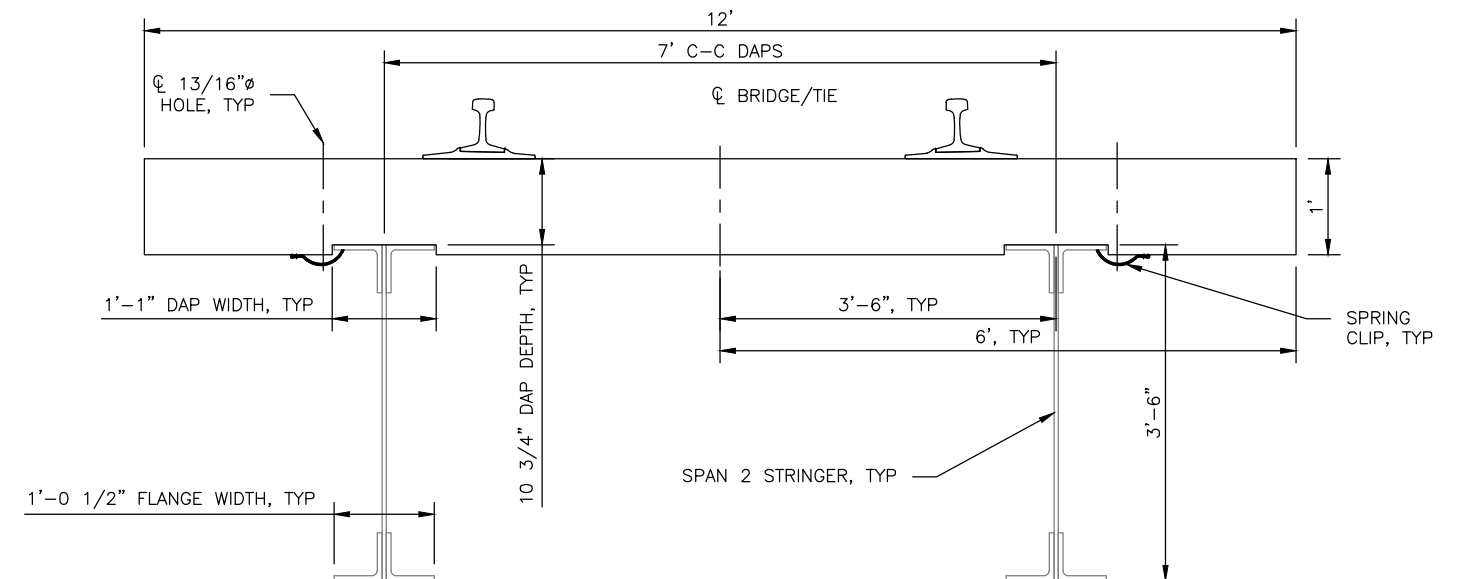
PROJECT:
**BR 269.2
TIE DECK REPLACEMENT**

TITLE:
ELEVATION AND PLAN VIEW

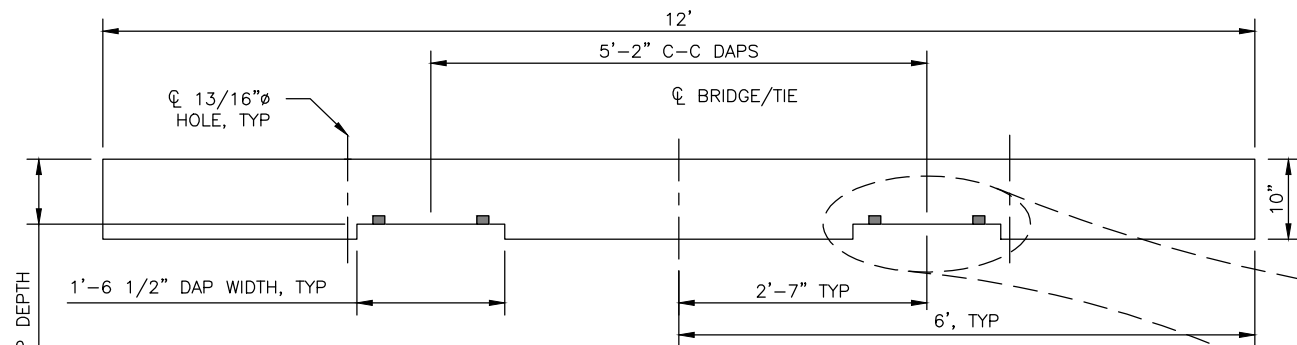
| | | |
|-------------------------|-----------------|------------------------------|
| DESIGNED BY: <u>DJS</u> | SCALE: AS NOTED | AFE NO.: |
| DRAWN BY: <u>DJS</u> | DATE: 2/22/22 | ACAD FILE: |
| CHECKED BY: _____ | | DWG NO. 1 OF 2 |
| APPROVED BY: _____ | | |



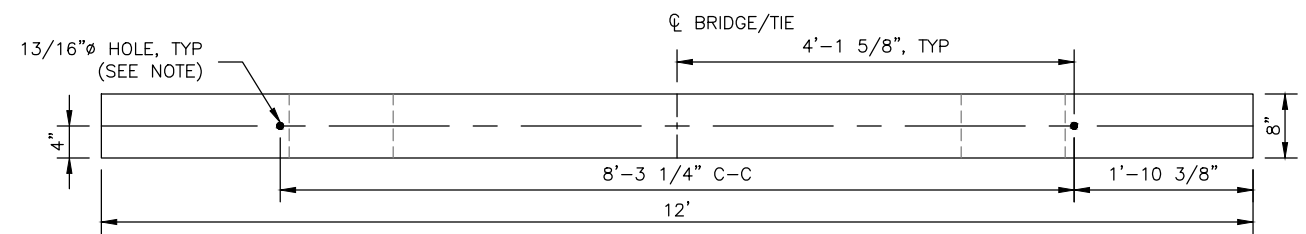
A BRIDGE TIE SECTION VIEW
TIE A - 8"X10"X12'- 76 REQ'D
 2 SCALE: 1/2"=1'-0"



D BRIDGE TIE SECTION VIEW
TIE C - 8"X12"X12'- 110 REQ'D
 2 SCALE: 1/2"=1'-0"

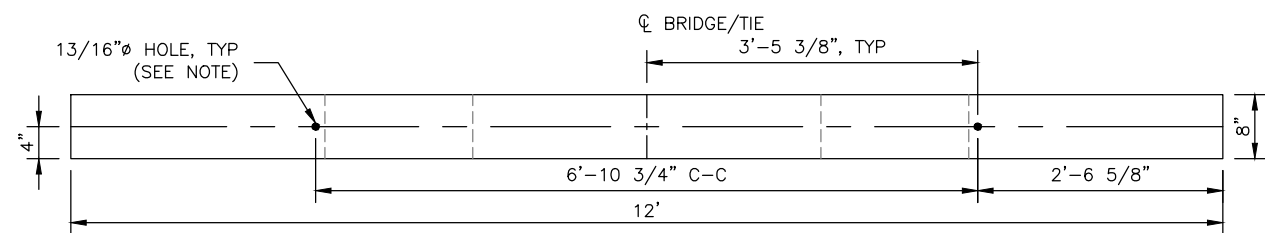


B BRIDGE TIE SECTION VIEW
TIE B - 8"X10"X12'- 12 REQ'D
 2 SCALE: 1/2"=1'-0"



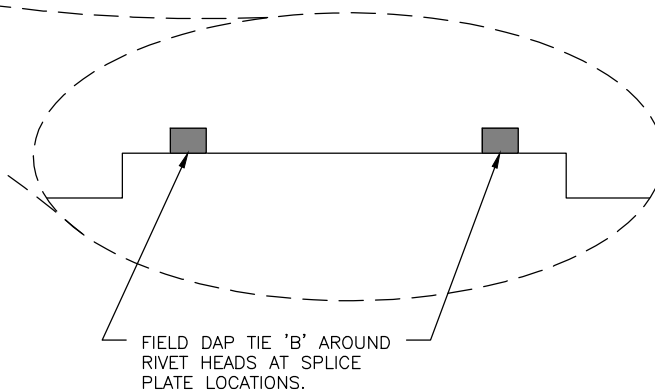
E PLAN VIEW TIE C
 2 SCALE: 1/2"=1'-0"


NOTE:
 40 TIES REQUIRE HOLES FOR BOLTS



C PLAN VIEW TIE A & B
 2 SCALE: 1/2"=1'-0"

NOTE:
 TIE A - 38 TIES REQUIRE HOLES FOR BOLTS
 TIE B - 6 TIES REQUIRE HOLES FOR BOLTS



| | | |
|---|-----------------|------------------------------|
|  ALASKA RAILROAD CORPORATION ENGINEERING SERVICES P.O. BOX 107500, ANCHORAGE, ALASKA 99510-7500 | | |
| PROJECT: | | |
| BR 269.2 | | |
| TIE DECK REPLACEMENT | | |
| TITLE: | | |
| TIE DETAILS | | |
| DESIGNED BY: <u>DJS</u> | SCALE: AS NOTED | AFE NO.: |
| DRAWN BY: <u>DJS</u> | DATE: 2/22/22 | ACAD FILE: |
| CHECKED BY: _____ | | DWG NO. 2 OF 2 |
| APPROVED BY: _____ | | |