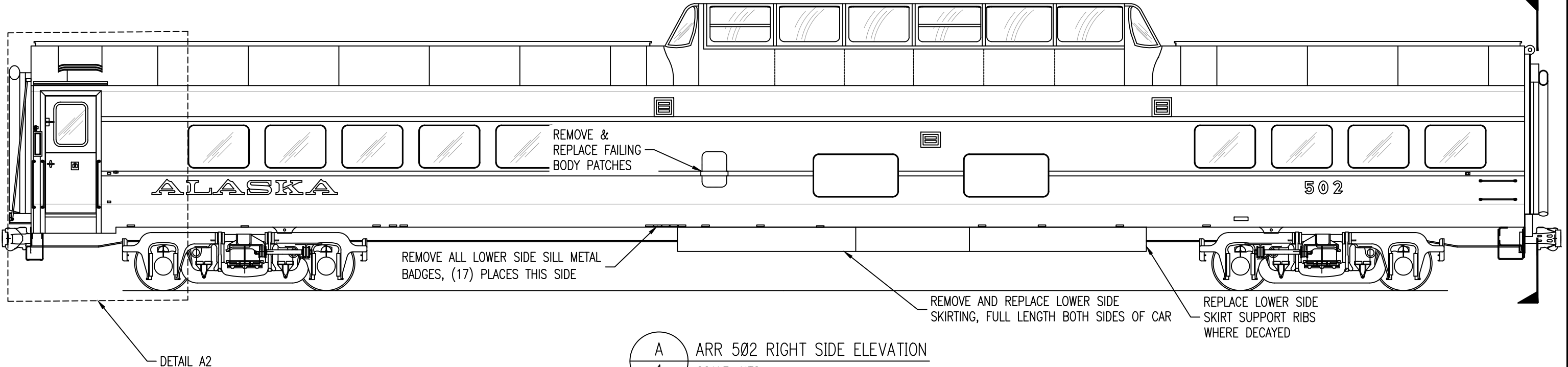


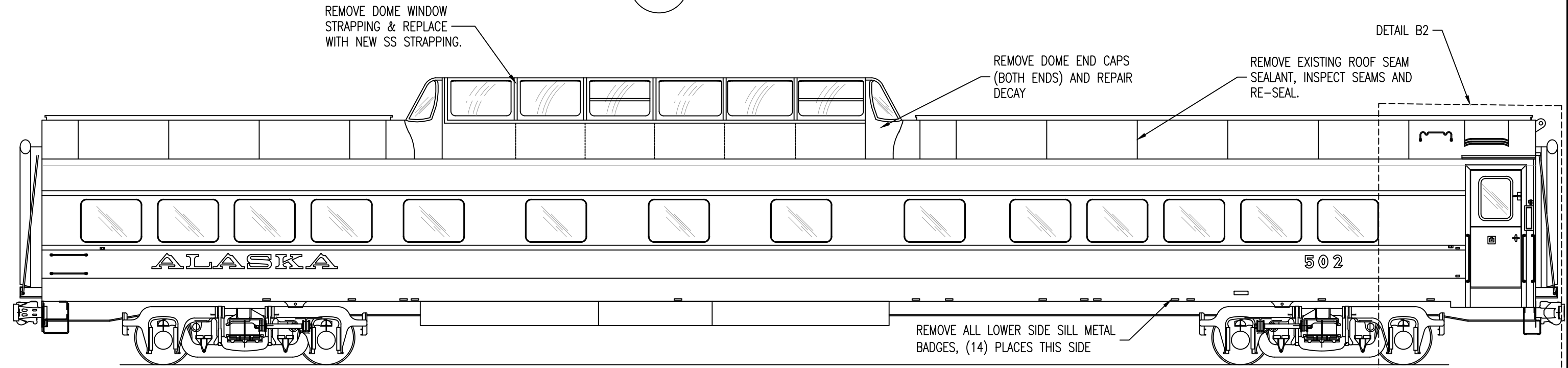
P:\Engineering\ACAD\PASSENGER COACHES\Passenger Equipment Rehab\2020 ARR 502 & 101 Heavy Repair and Paint\Passenger Coach ARR 502.dwg

A
3




A
1

ARR 502 RIGHT SIDE ELEVATION
SCALE: NTS

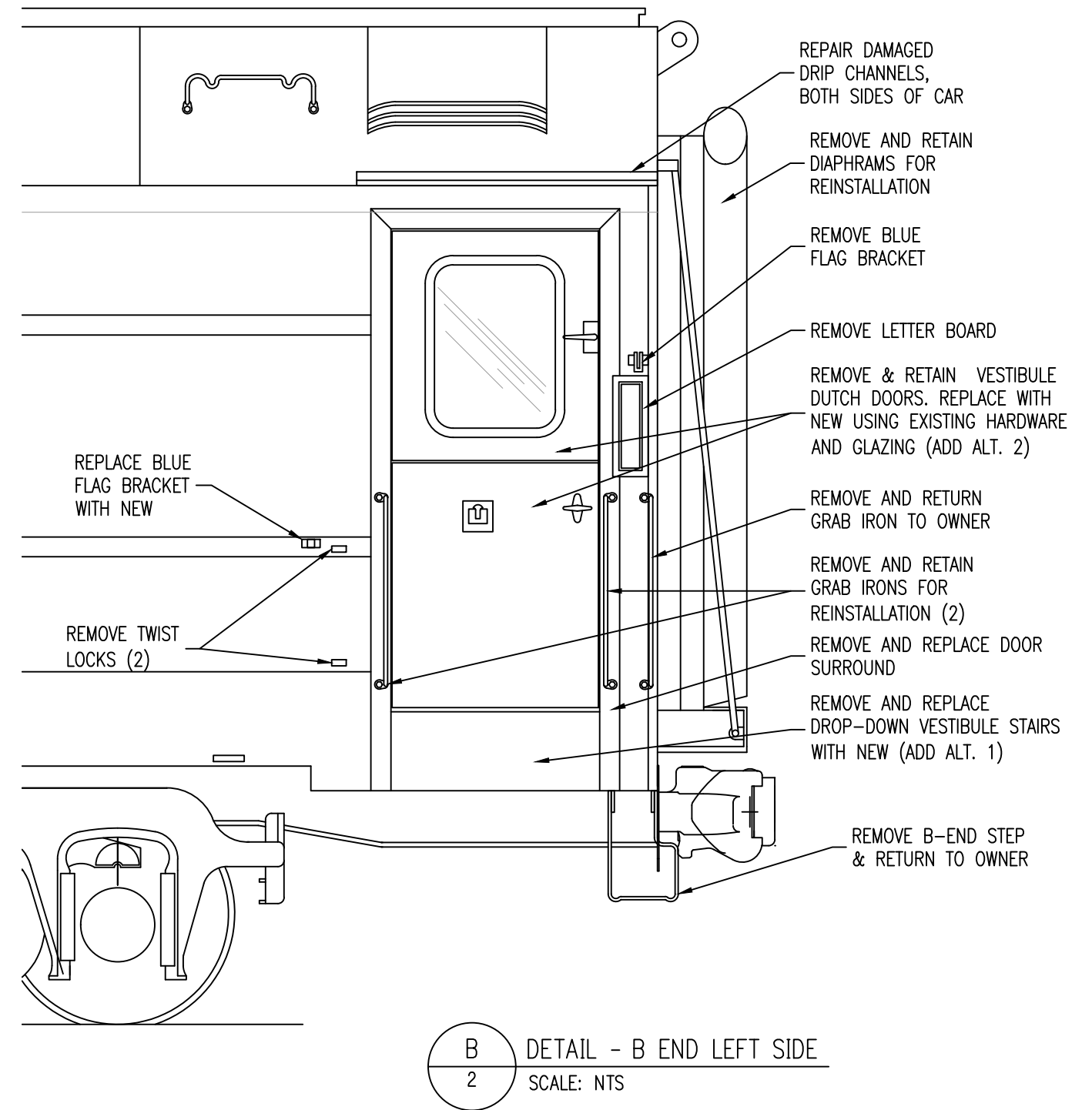
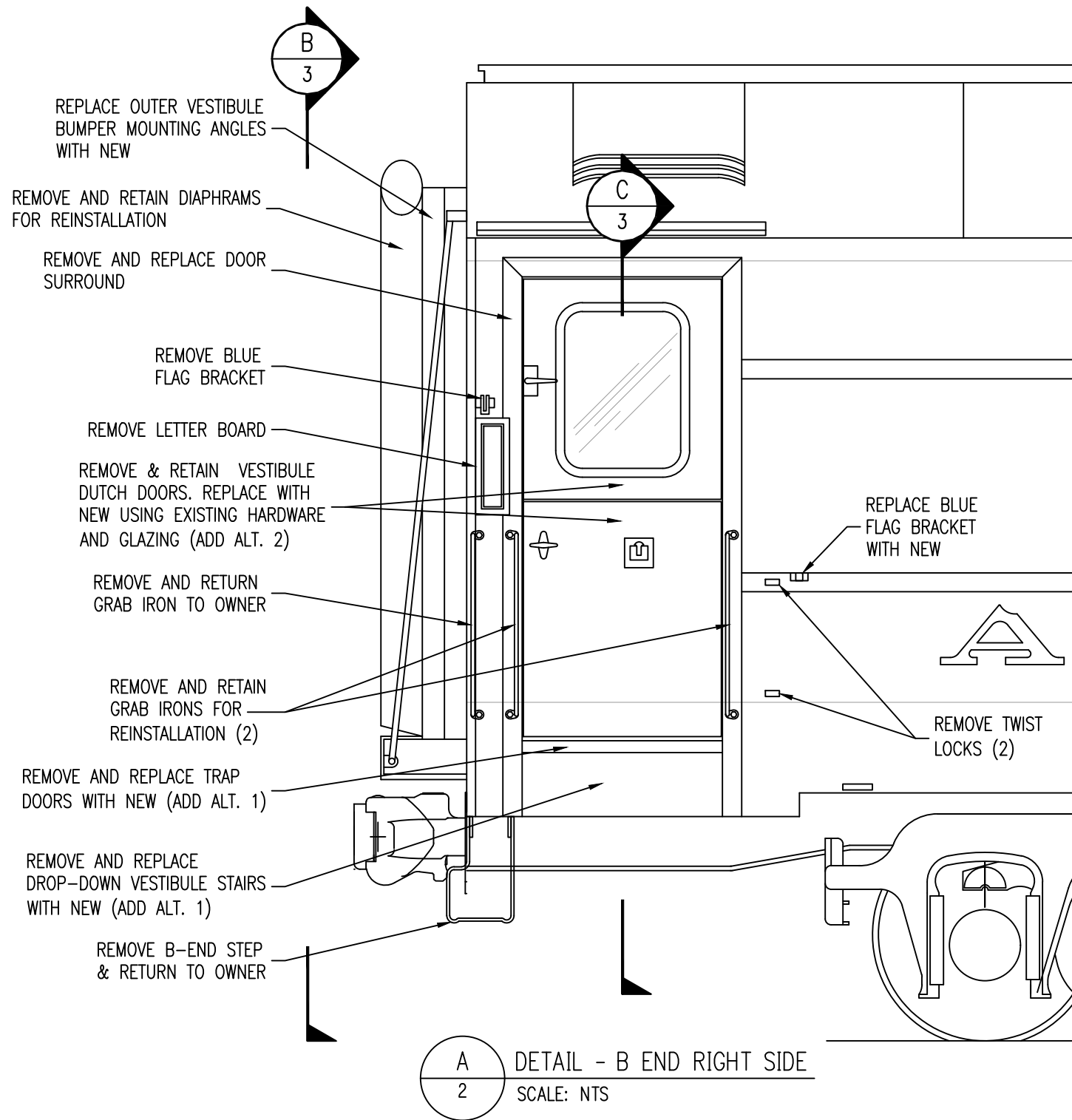



B
1

ARR 502 LEFT SIDE ELEVATION
SCALE: NTS

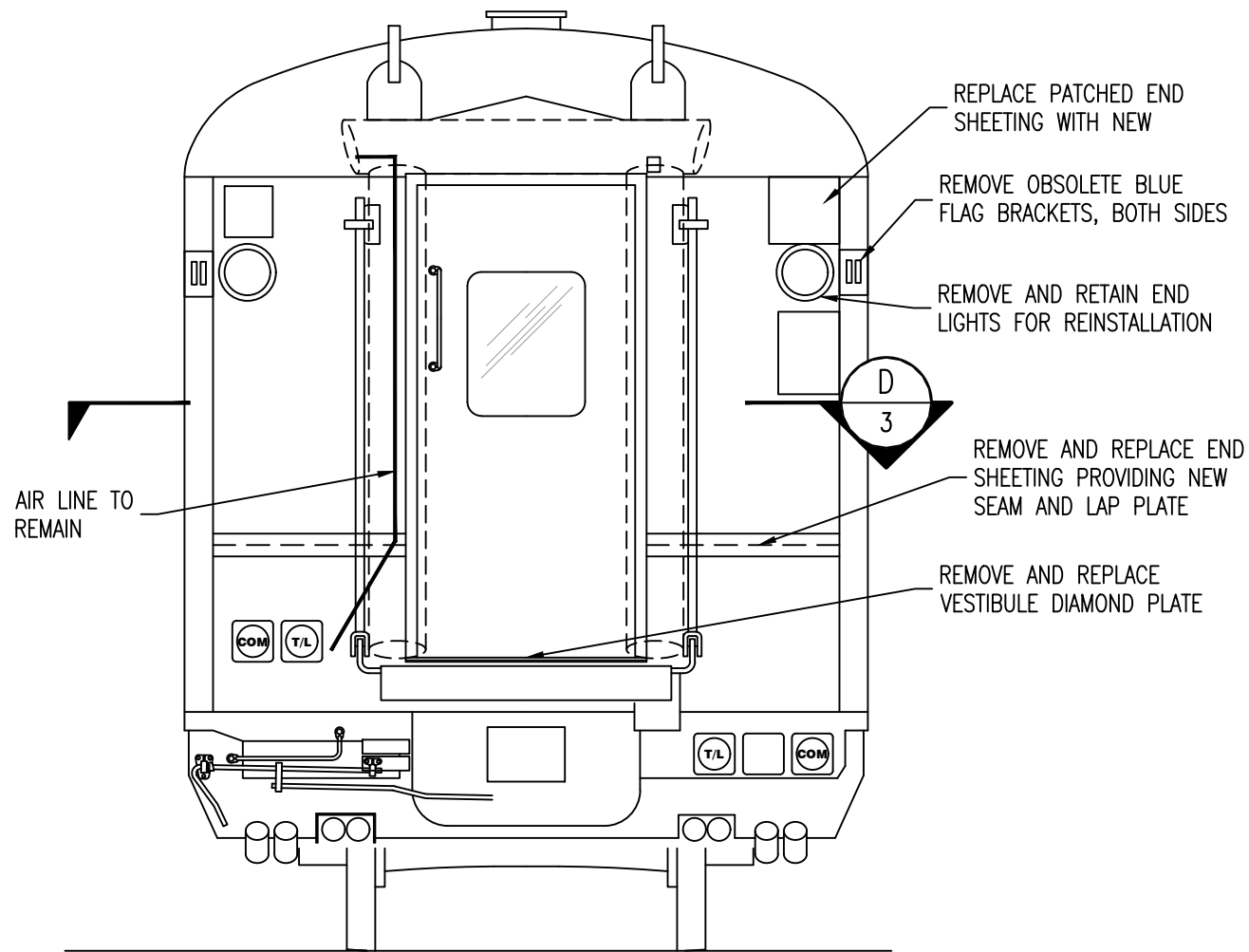
 ALASKA RAILROAD CORPORATION ENGINEERING SERVICES P.O. BOX 107500, ANCHORAGE, ALASKA 99510-7500		
PROJECT : MOTIVE POWER AND EQUIPMENT PASSENGER COACHES		
TITLE: ARR 502 HEAVY PAINT AND BODY ELEVATION VIEWS		
DESIGNED BY: ARRC	SCALE : NO SCALE	AFE NO.:
DRAWN BY: CDL	DATE : 4/14/21	ACAD FILE:
CHECKED BY: ARRC		DWG NO.
APPROVED BY: ARRC		1 OF 13

P:\Engineering\ACAD\PASSENGER COACHES\Passenger Equipment Rehab\2020 ARR 502 & 101 Heavy Repair and Paint\Passenger Coach ARR 502.dwg

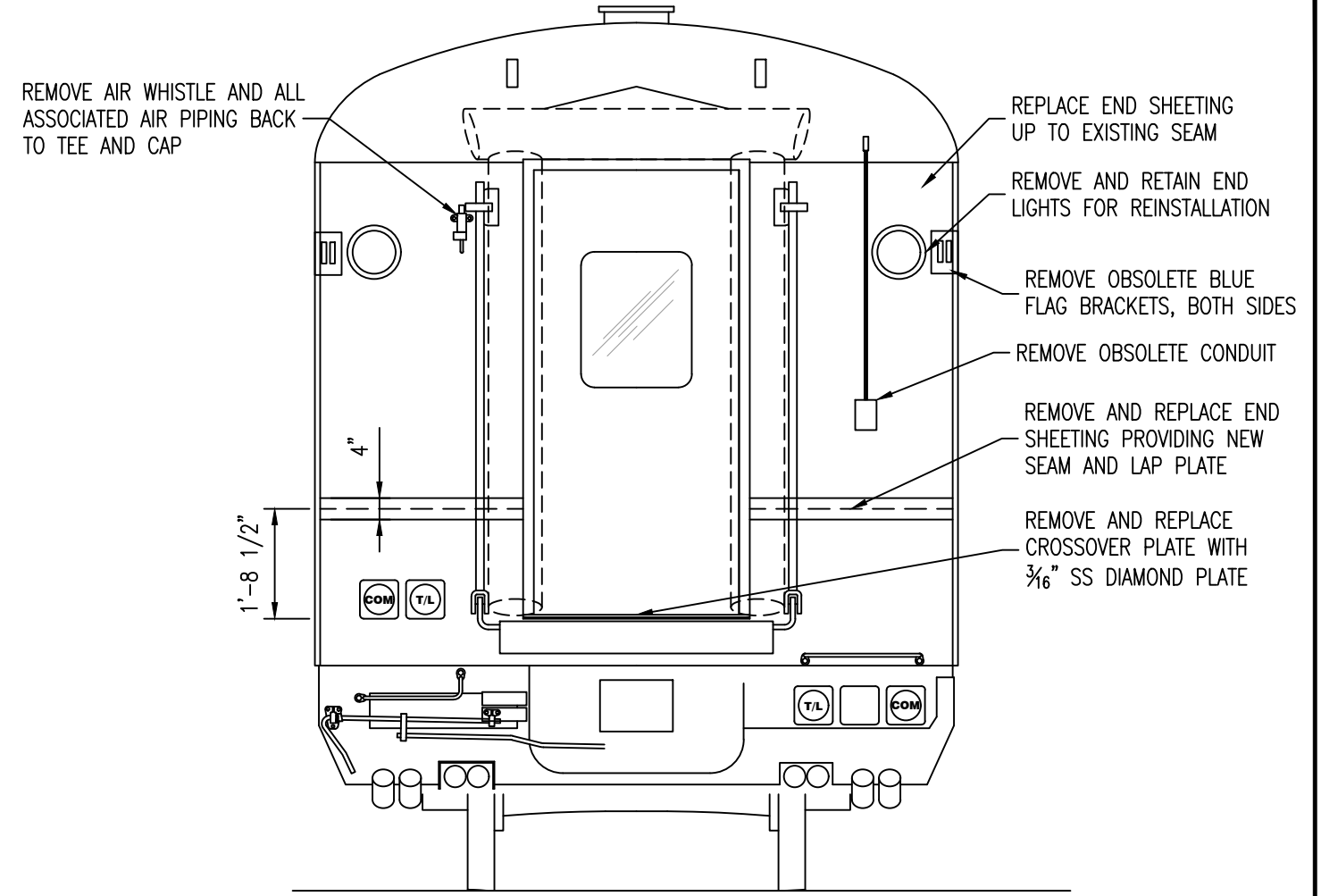


 ALASKA RAILROAD CORPORATION ENGINEERING SERVICES P.O. BOX 107500, ANCHORAGE, ALASKA 99510-7500		
PROJECT :		
MOTIVE POWER AND EQUIPMENT PASSENGER COACHES		
TITLE:		
ARR 502 HEAVY PAINT AND BODY ELEVATION DETAILS		
DESIGNED BY: ARRC	SCALE : NO SCALE	AFE NO.:
DRAWN BY: CDL	DATE : 4/14/21	ACAD FILE:
CHECKED BY: ARRC		DWG NO. 2 OF 13
APPROVED BY: ARRC		

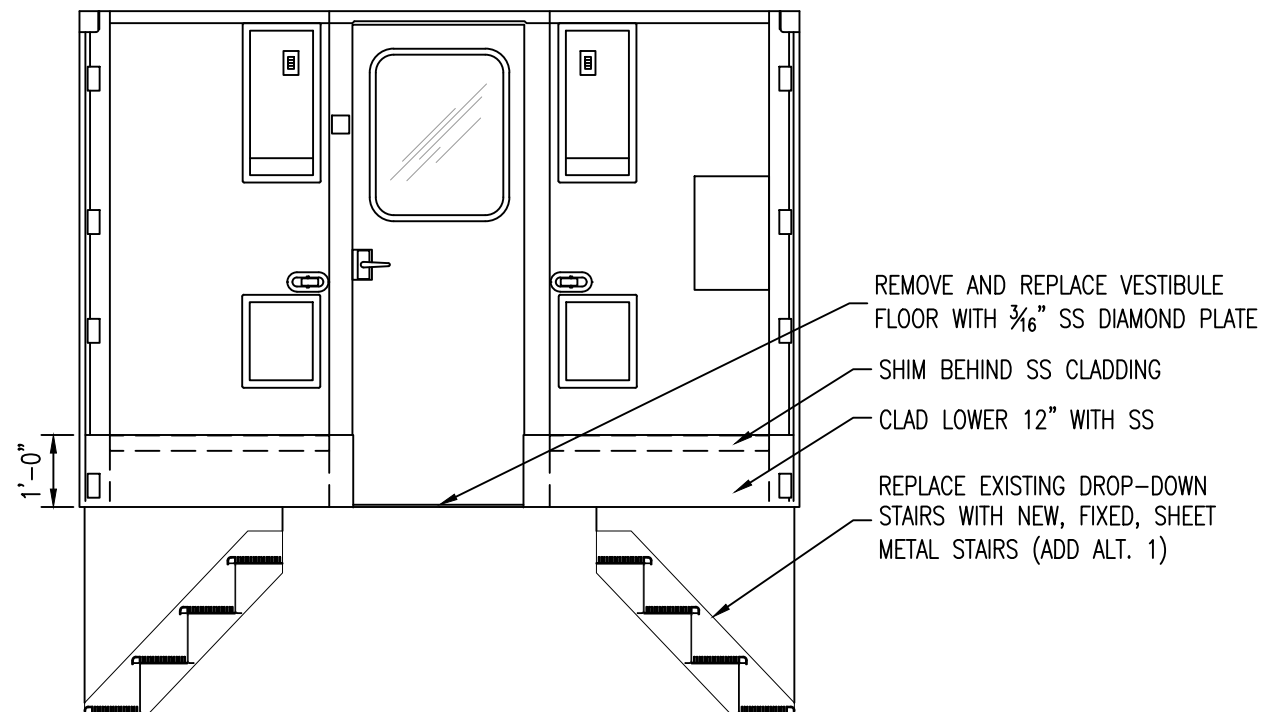
P:\Engineering\ACAD\PASSENGER COACHES\Passenger Equipment Rehab\2020 ARR 502 & 101 Heavy Repair and Paint\Passenger Coach ARR 502.dwg



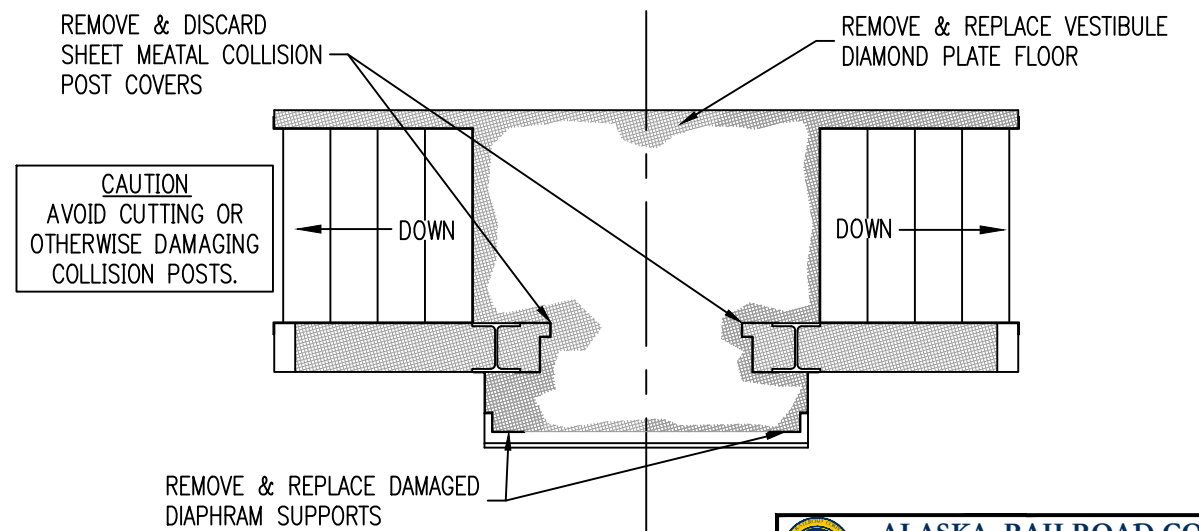
A
3
DETAIL - A END ELEVATION
SCALE: NTS




B
3
DETAIL - B END ELEVATION
SCALE: NTS



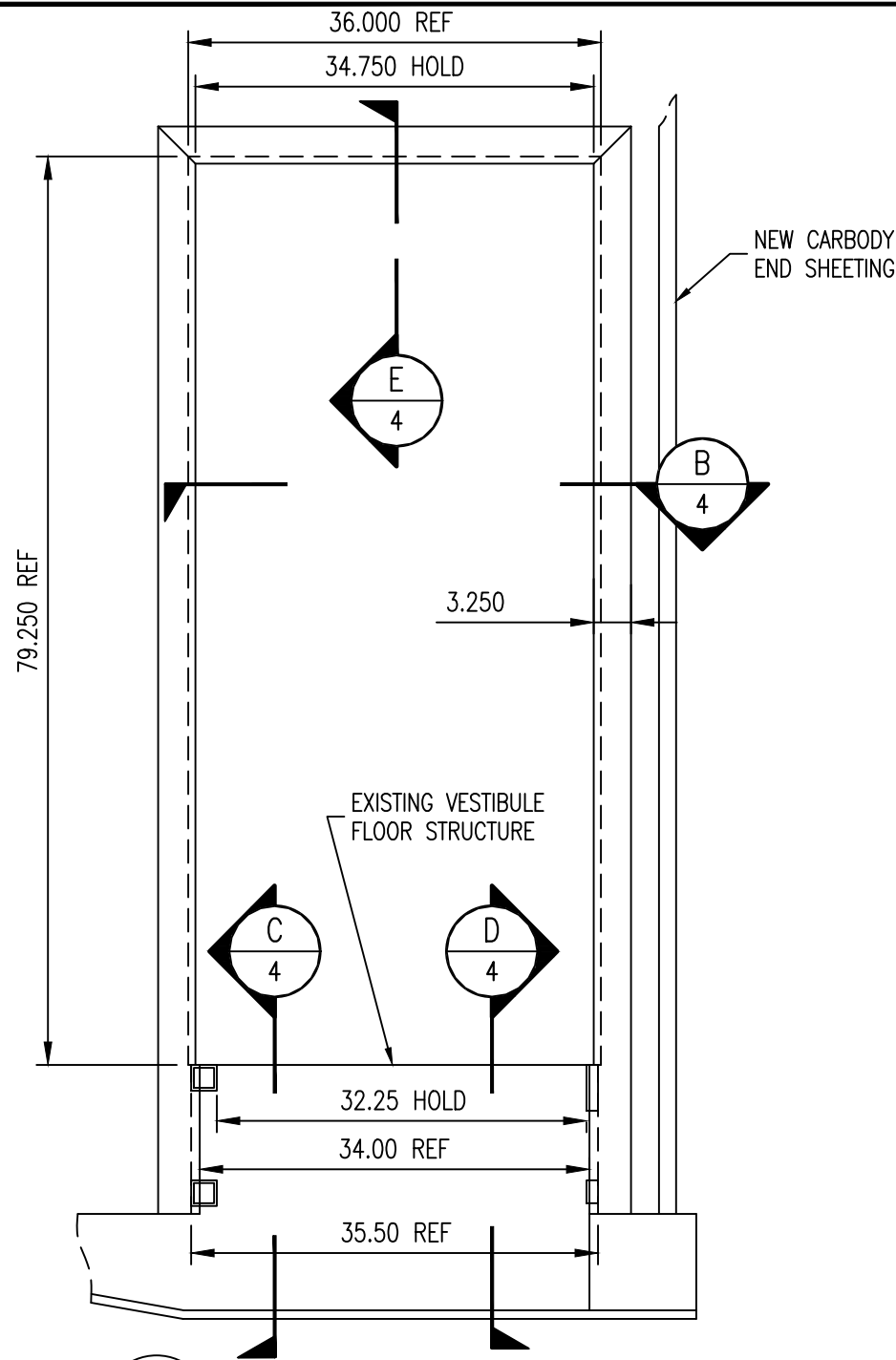
C
3
VESTIBULE INTERIOR SECTION VIEW
SCALE: NTS



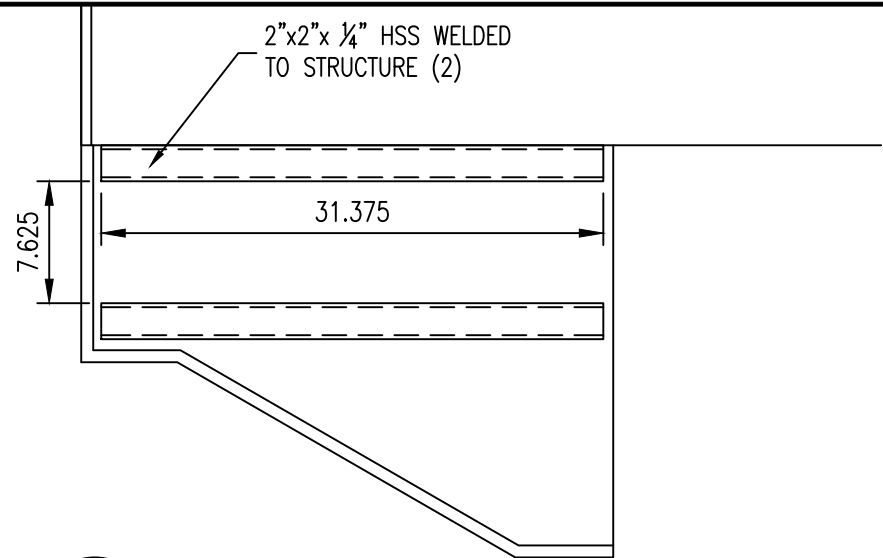
D
3
VESTIBULE SECTION
SCALE: NTS

 ALASKA RAILROAD CORPORATION ENGINEERING SERVICES P.O. BOX 107500, ANCHORAGE, ALASKA 99510-7500		
PROJECT :		
MOTIVE POWER AND EQUIPMENT PASSENGER COACHES		
TITLE:		
ARR 502 HEAVY PAINT AND BODY A & B END REPAIRS		
DESIGNED BY: ARRC	SCALE : NO SCALE	AFE NO.:
DRAWN BY: CDL	DATE : 4/14/21	ACAD FILE:
CHECKED BY: ARRC		DWG NO.
APPROVED BY: ARRC		3 OF 13

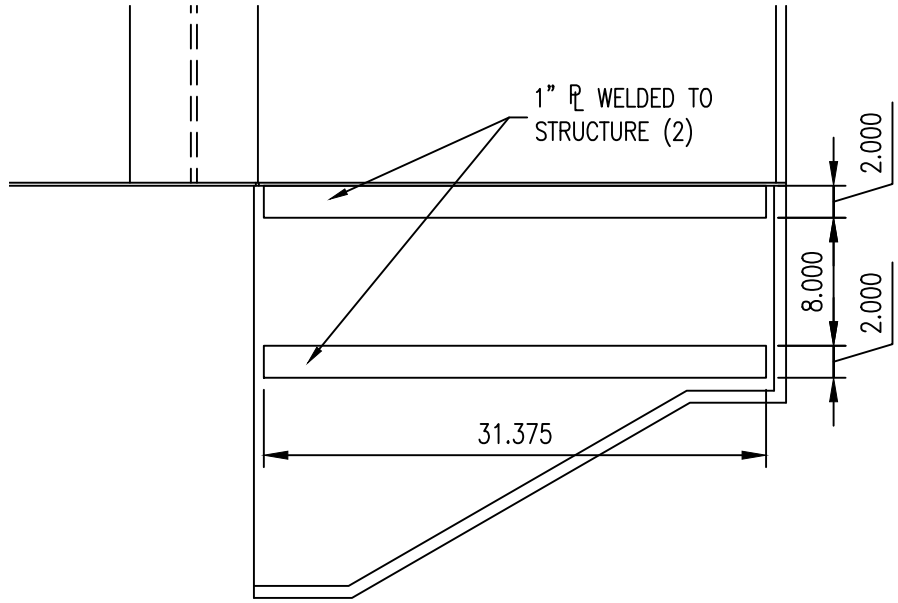
P:\Engineering\ACAD\PASSENGER COACHES\Passenger Equipment Rehab\2020 ARR 502 & 101 Heavy Repair and Paint\Passenger Coach ARR 502.dwg



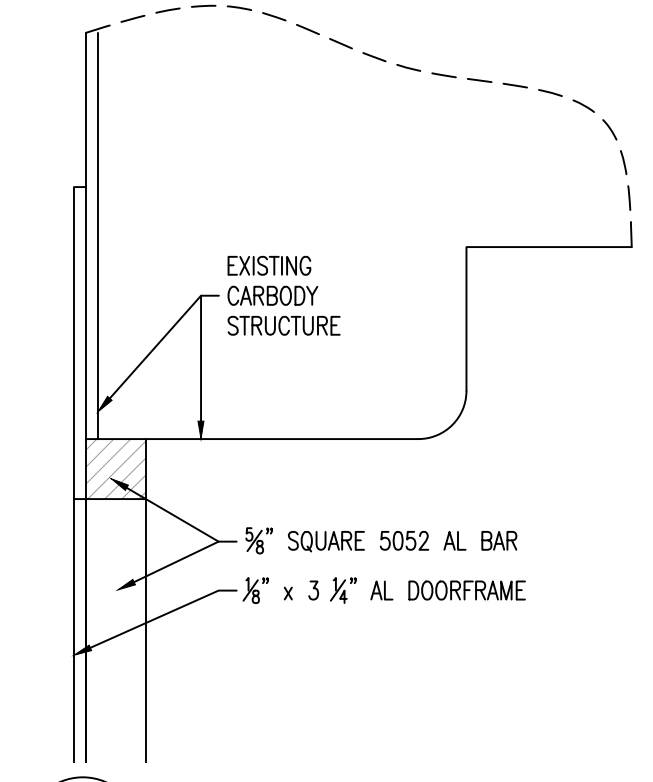
A VESTIBULE SIDE DOOR FRAME REPLACEMENT
4 SIDE VIEW OF CAR



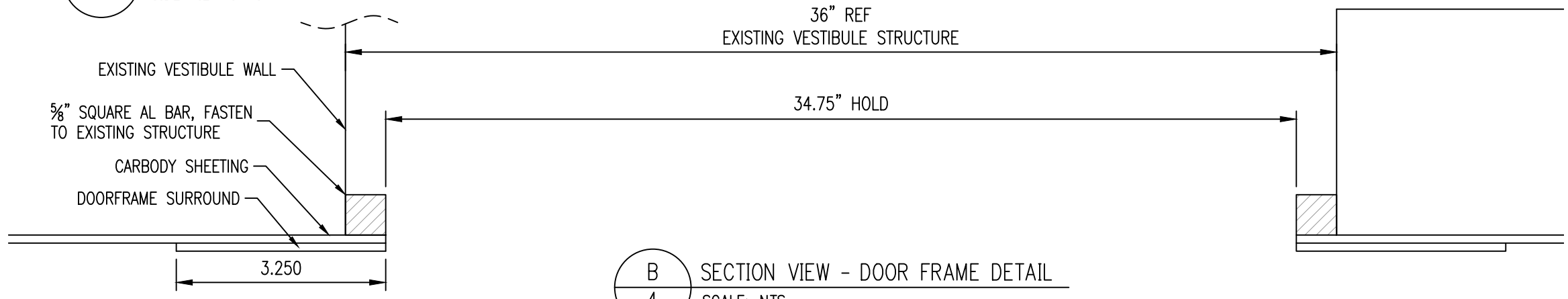
C REPLACEMENT VESTIBULE STAIR SUPPORT
4 SCALE: NTS



D REPLACEMENT VESTIBULE STAIR SUPPORT
4 SCALE: NTS




E SECTION - DOOR FRAME DETAIL
4 SCALE: NTS

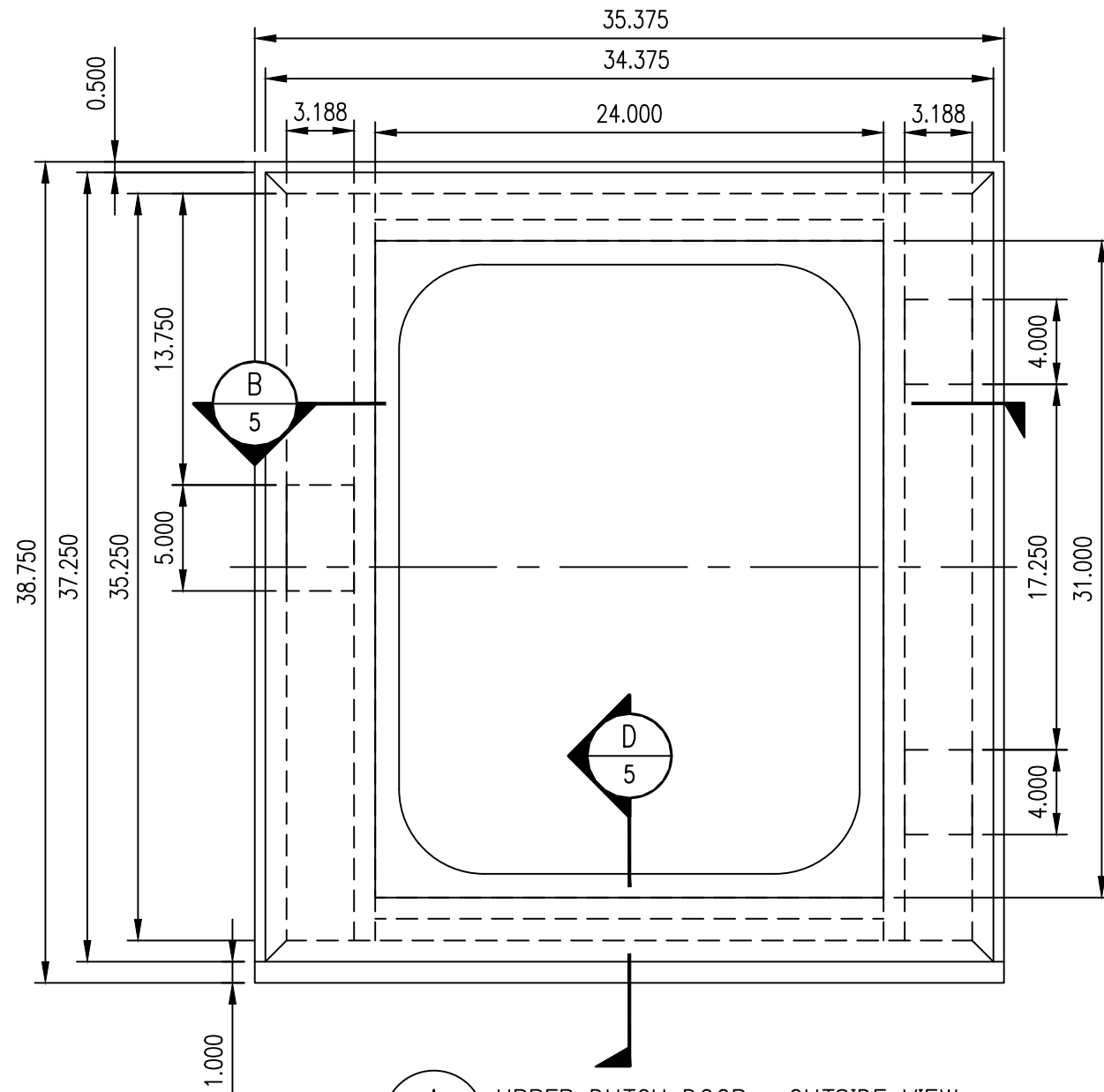


B SECTION VIEW - DOOR FRAME DETAIL
4 SCALE: NTS

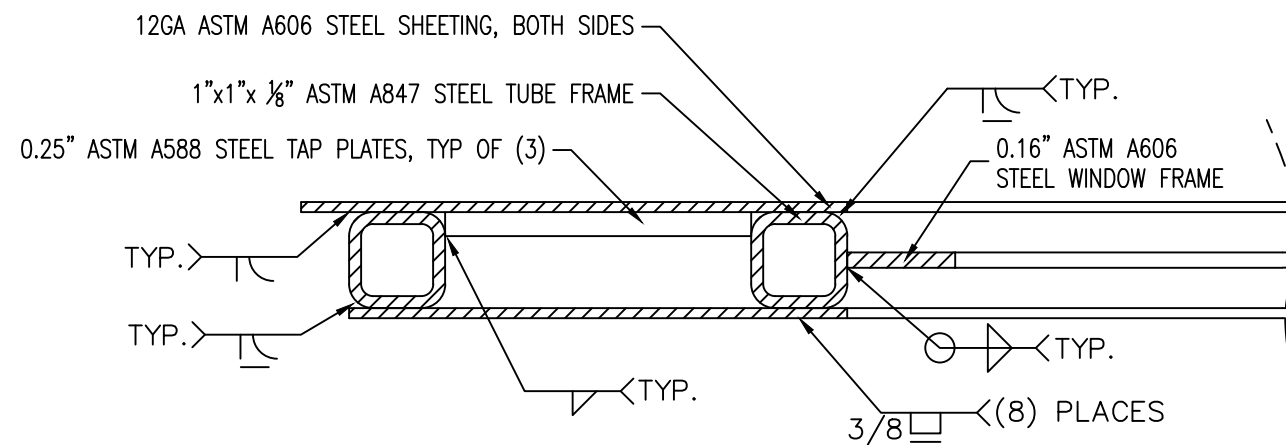
- NOTES:
- 1) WELD PROCESS: FCAW/SMAW
 - 2) LEFT HAND SIDE DOOR SHOWN, RIGHT IS MIRROR IMAGE.
 - 3) WELD STAIR SUPPORTS DIRECTLY TO EXISTING STRUCTURE IF SOUND AND FREE FROM DECAY. IF DECAY EXISTS, REBUILD UNDERLYING STRUCTURE AND PROVIDE STAIR WIDTH AS GIVEN.
 - 4) THIS WORK PART OF ADD ALT #1.

 ALASKA RAILROAD CORPORATION ENGINEERING SERVICES P.O. BOX 107500, ANCHORAGE, ALASKA 99510-7500		
PROJECT :		
MOTIVE POWER AND EQUIPMENT PASSENGER COACHES		
TITLE:		
ARR 502 HEAVY PAINT AND BODY VESTIBULE SIDE ENTRANCE		
DESIGNED BY: ARRC	SCALE : NO SCALE	AFE NO.:
DRAWN BY: CDL	DATE : 4/14/21	ACAD FILE:
CHECKED BY: ARRC		DWG NO.
APPROVED BY: ARRC		4 OF 13

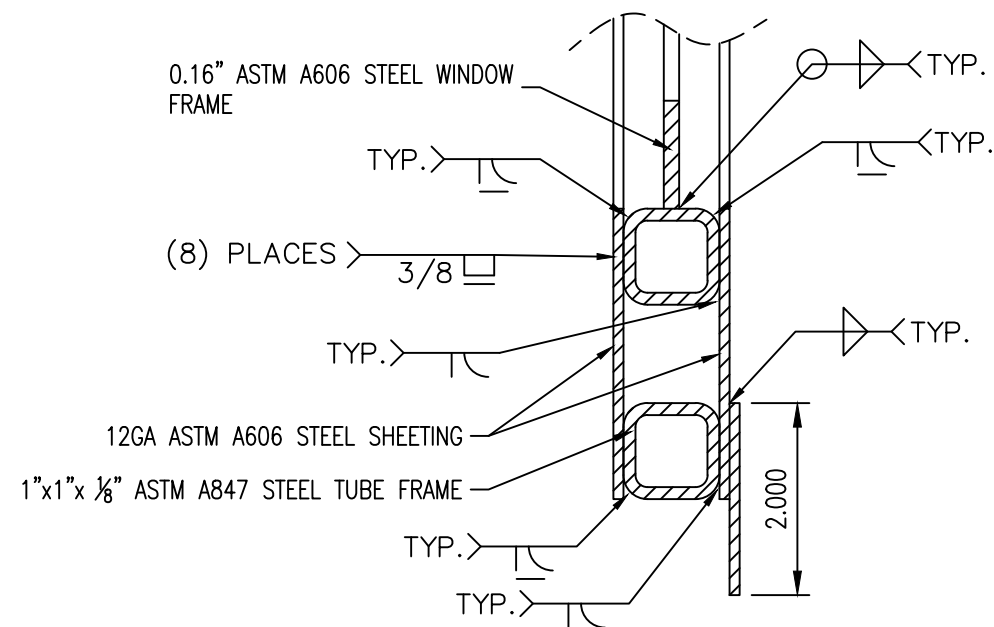
P:\Engineering\ACAD\PASSENGER COACHES\Rehab\2020 ARR 502 & 101 Heavy Repair and Paint\Passenger Coach ARR 502.dwg



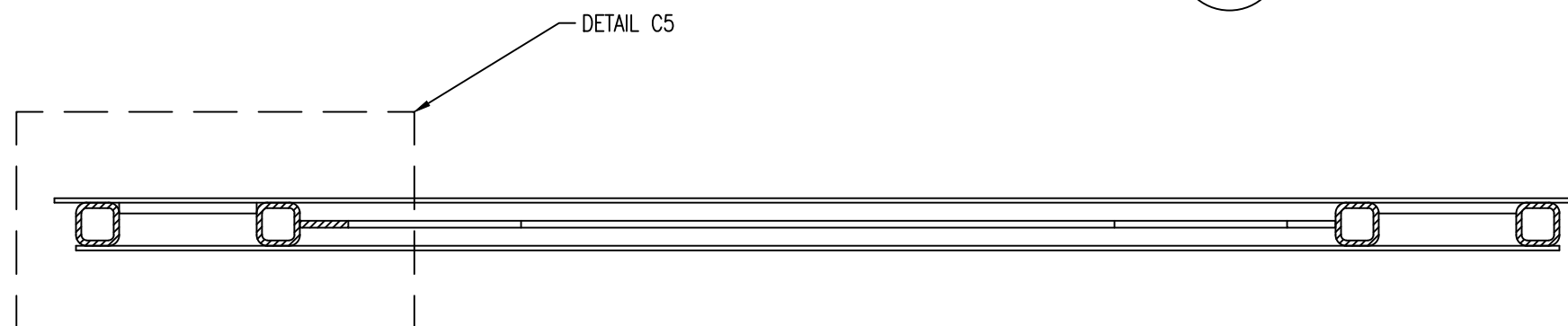
A
5
UPPER DUTCH DOOR - OUTSIDE VIEW
SCALE: NTS



C
5
UPPER DUTCH DOOR - SECTION DETAIL
SCALE: NTS




D
5
UPPER DUTCH DOOR - SECTION DETAIL
SCALE: NTS



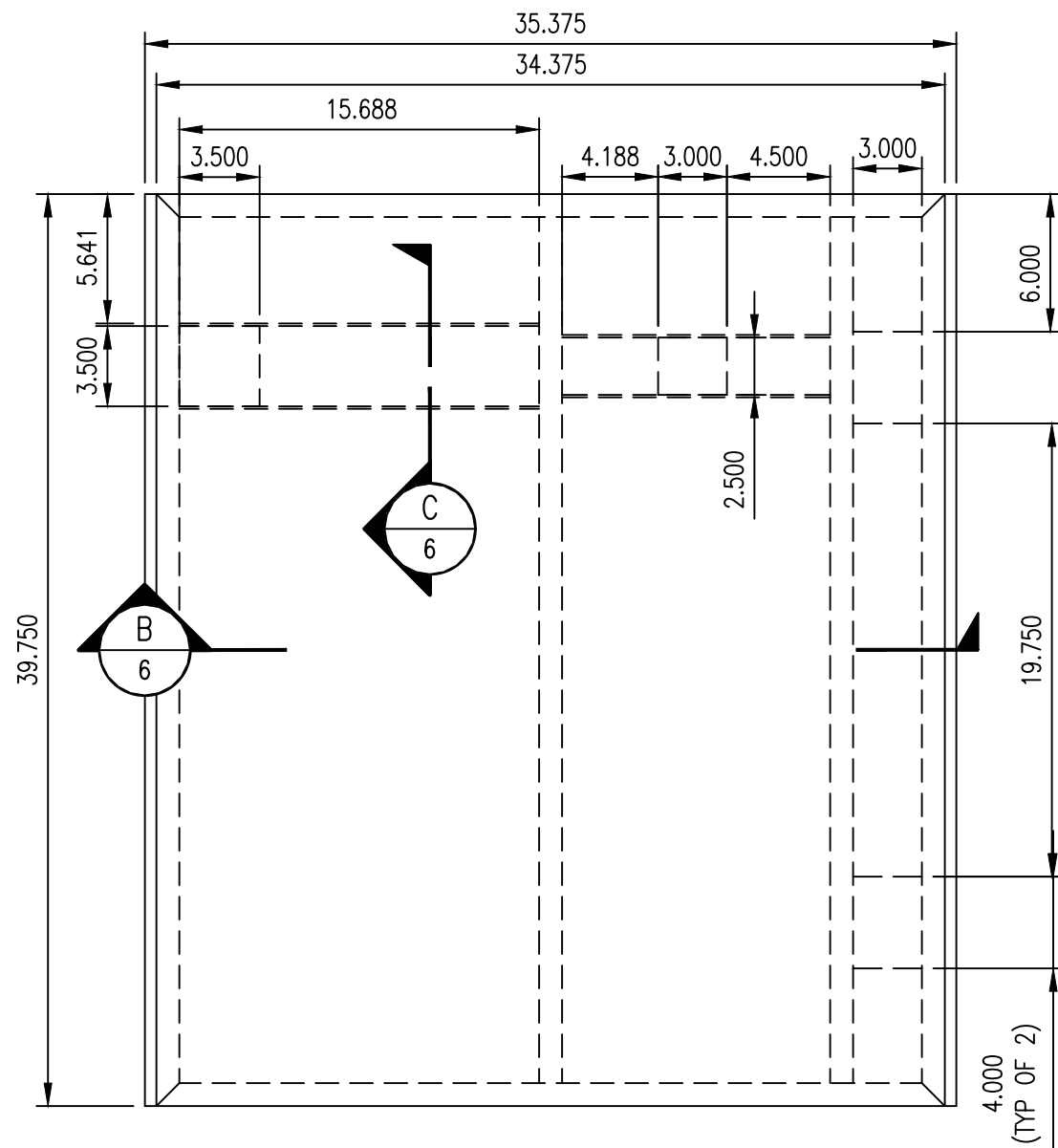
B
5
UPPER DUTCH DOOR - SECTION VIEW
SCALE: NTS

NOTES:

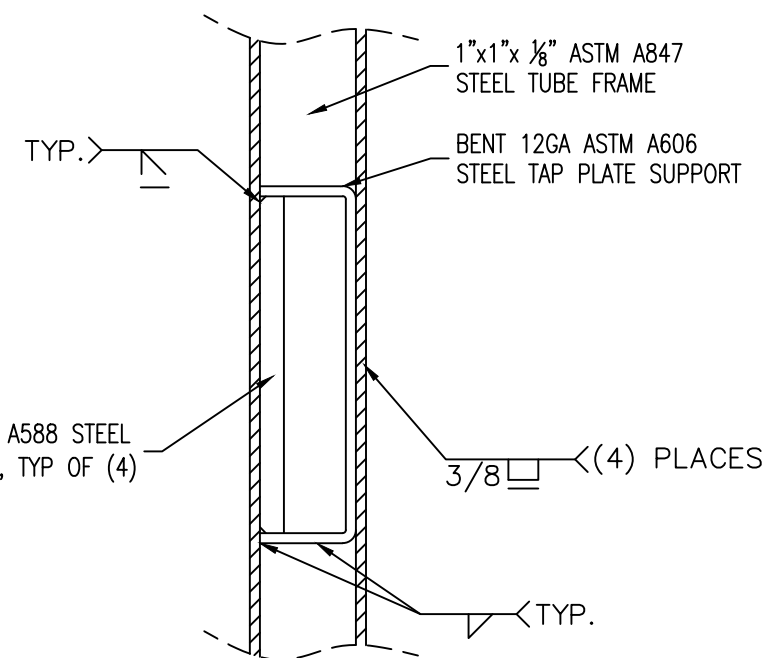
- 1) FILL DOOR CAVITIES WITH MINERAL WOOL INSULATION.
- 2) WELD PROCESS: FCAW/SAW/GTAW
- 3) CONTRACTOR TO VERIFY ALL MEASUREMENTS AND FIT OF DOOR TO REBUILT CAR DOOR FRAME STRUCTURE. SHOP DRAWINGS TO BE SUBMITTED TO ARRC PRIOR TO FABRICATION OF DOORS.
- 4) RIGHT HAND CAR DOOR SHOWN, LEFT IS MIRROR IMAGE.
- 5) THIS WORK PART OF ADD ALT #2.

 ALASKA RAILROAD CORPORATION ENGINEERING SERVICES P.O. BOX 107500, ANCHORAGE, ALASKA 99510-7500		
PROJECT :		
MOTIVE POWER AND EQUIPMENT PASSENGER COACHES		
TITLE:		
ARR 502 HEAVY PAINT AND BODY UPPER VESTIBULE DOOR FABRICATION		
DESIGNED BY: ARRC	SCALE : NO SCALE	AFE NO.:
DRAWN BY: CDL	DATE : 4/14/21	ACAD FILE:
CHECKED BY: ARRC		DWG NO. 5 OF 13
APPROVED BY: ARRC		

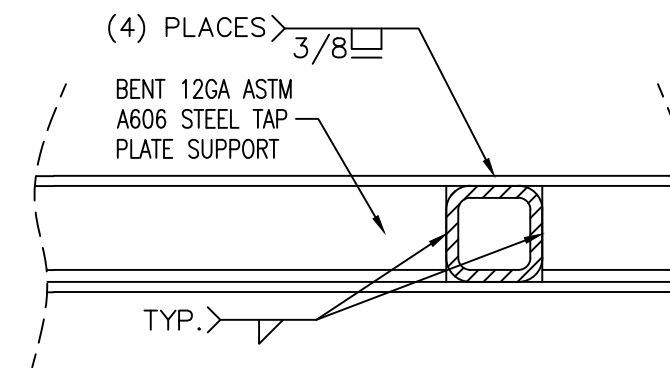
P:\Engineering\ACAD\PASSENGER COACHES\Passenger Equipment Rehab\2020 ARR 502 & 101 Heavy Repair and Paint\Passenger Coach ARR 502.dwg



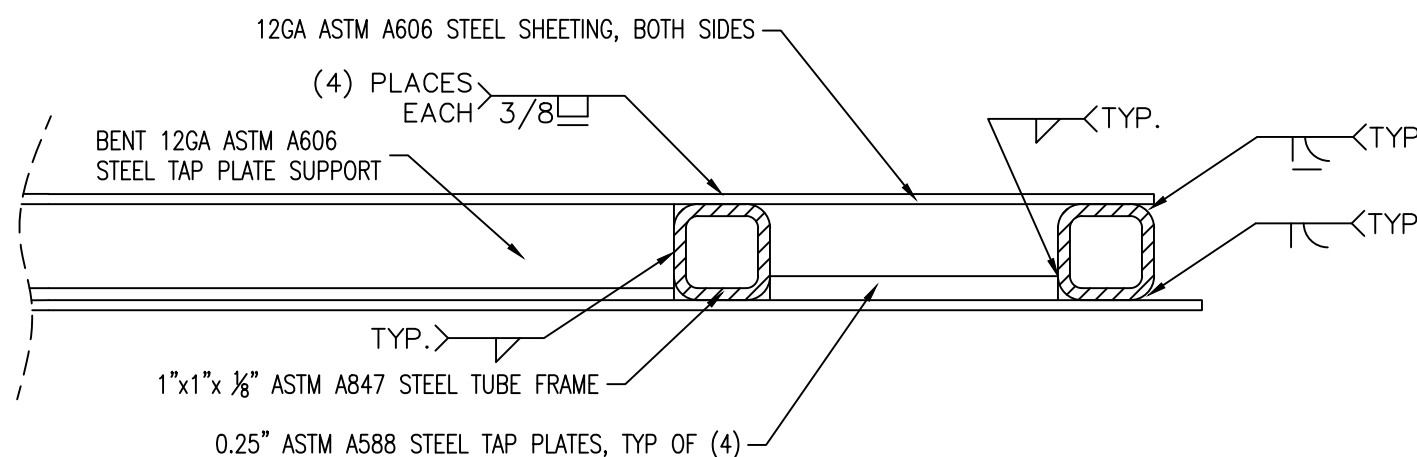
A
6 LOWER DUTCH DOOR - OUTSIDE VIEW
SCALE: NTS



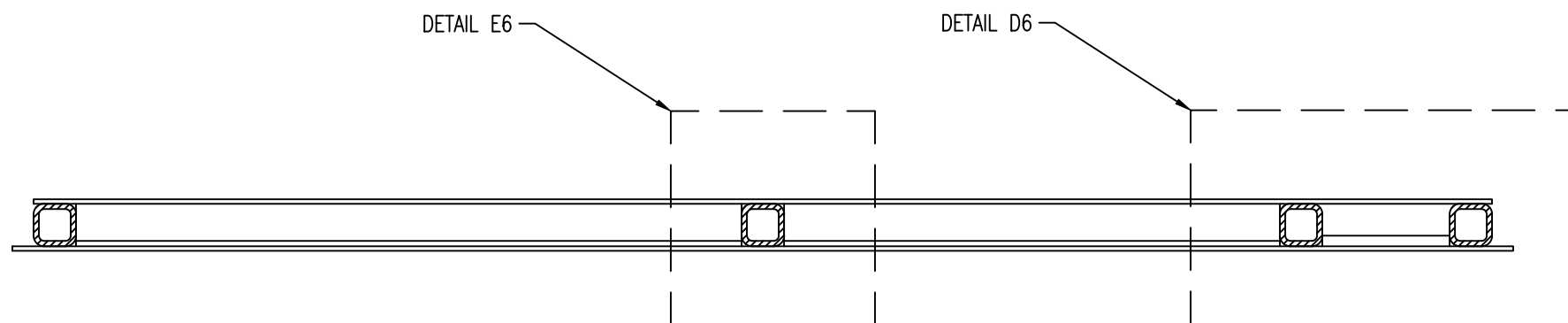
C
6 LOWER DUTCH DOOR - SECTION DETAIL
SCALE: NTS



E
6 LOWER DUTCH DOOR - SECTION DETAIL
SCALE: NTS




D
6 LOWER DUTCH DOOR - SECTION DETAIL
SCALE: NTS

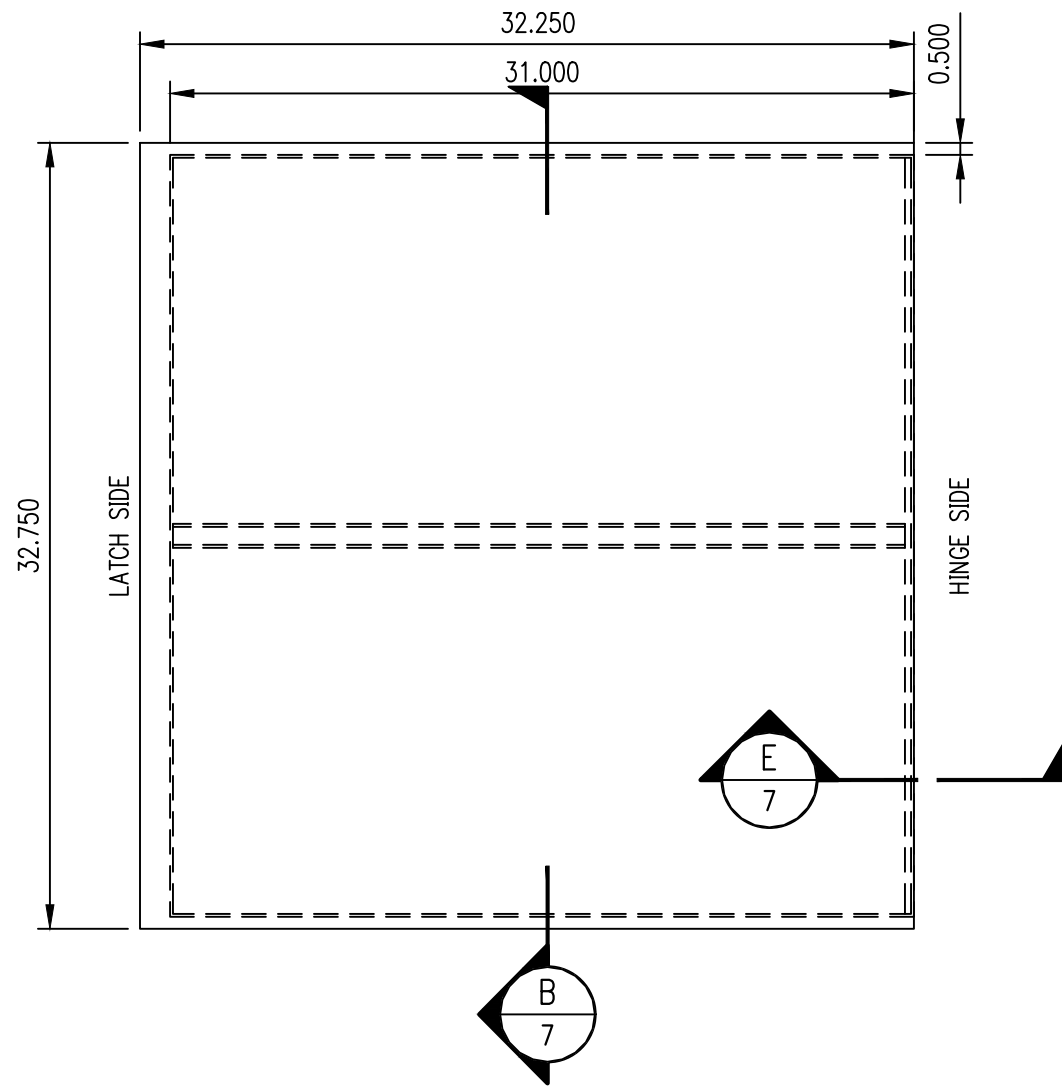


B
6 LOWER DUTCH DOOR - SECTION VIEW
SCALE: NTS

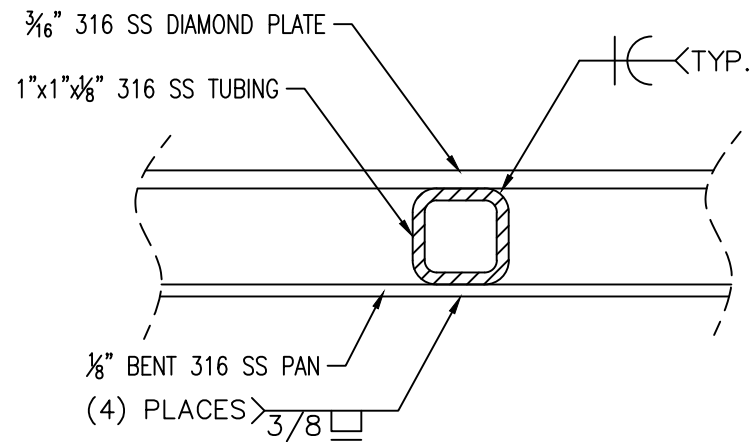
NOTES:

- 1) FILL DOOR CAVITIES WITH MINERAL WOOL INSULATION.
- 2) WELD PROCESS: FCAW/STAW/GTAW
- 3) CONTRACTOR TO VERIFY ALL MEASUREMENTS AND FIT OF DOOR TO REBUILT CAR DOOR FRAME STRUCTURE. SHOP DRAWINGS TO BE SUBMITTED TO ARRC PRIOR TO FABRICATION OF DOORS.
- 4) RIGHT HAND CAR DOOR SHOWN, LEFT IS MIRROR IMAGE.
- 5) THIS WORK PART OF ADD ALT #2.

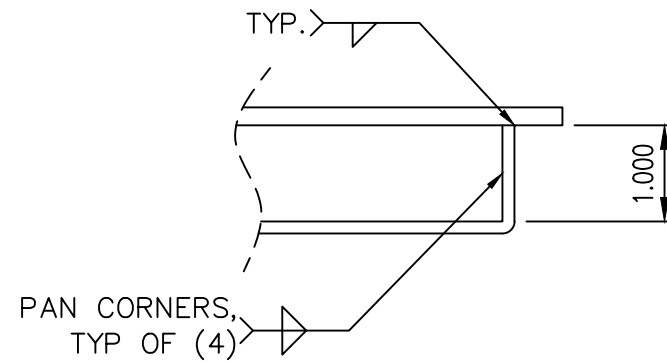
 ALASKA RAILROAD CORPORATION ENGINEERING SERVICES P.O. BOX 107500, ANCHORAGE, ALASKA 99510-7500		
PROJECT :		
MOTIVE POWER AND EQUIPMENT PASSENGER COACHES		
TITLE:		
ARR 502 HEAVY PAINT AND BODY LOWER VESTIBULE DOOR FABRICATION		
DESIGNED BY: ARRC	SCALE : NO SCALE	AFE NO.:
DRAWN BY: CDL	DATE : 4/14/21	ACAD FILE:
CHECKED BY: ARRC		DWG NO. 6 OF 13
APPROVED BY: ARRC		



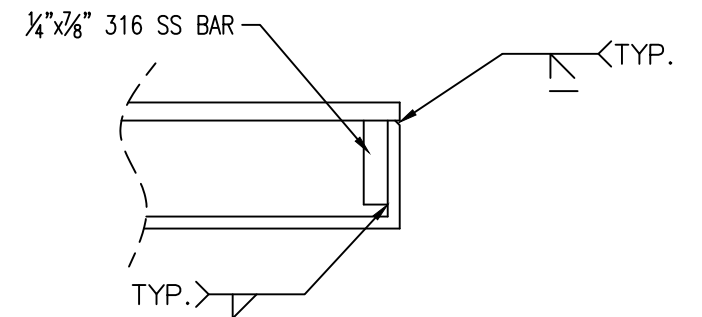
A
7 VESTIBULE TRAP DOOR - TOP VIEW
SCALE: NTS



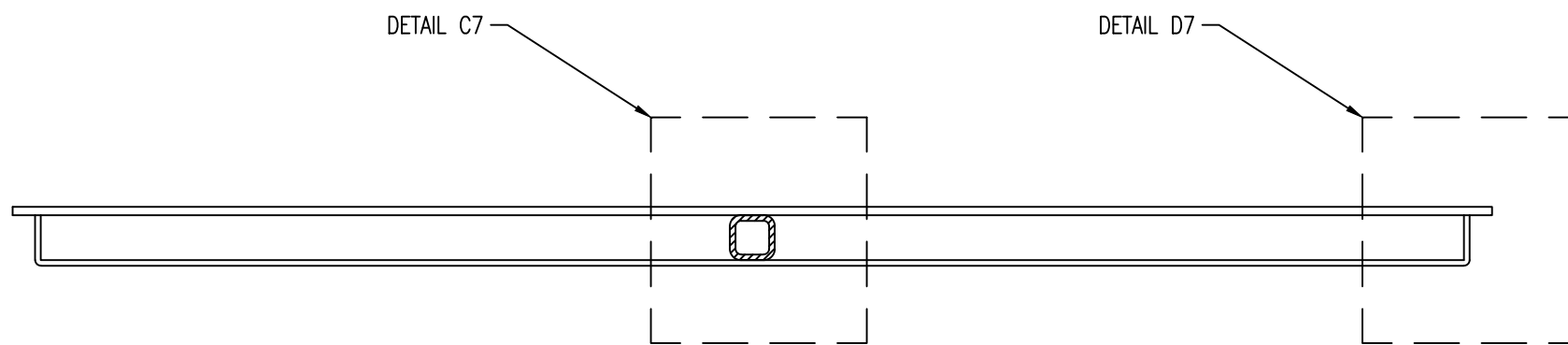
C
7 VESTIBULE TRAP DOOR DETAIL
SCALE: NTS



D
7 VESTIBULE TRAP DOOR DETAIL
SCALE: NTS




E
7 VESTIBULE TRAP DOOR SECTION
SCALE: NTS



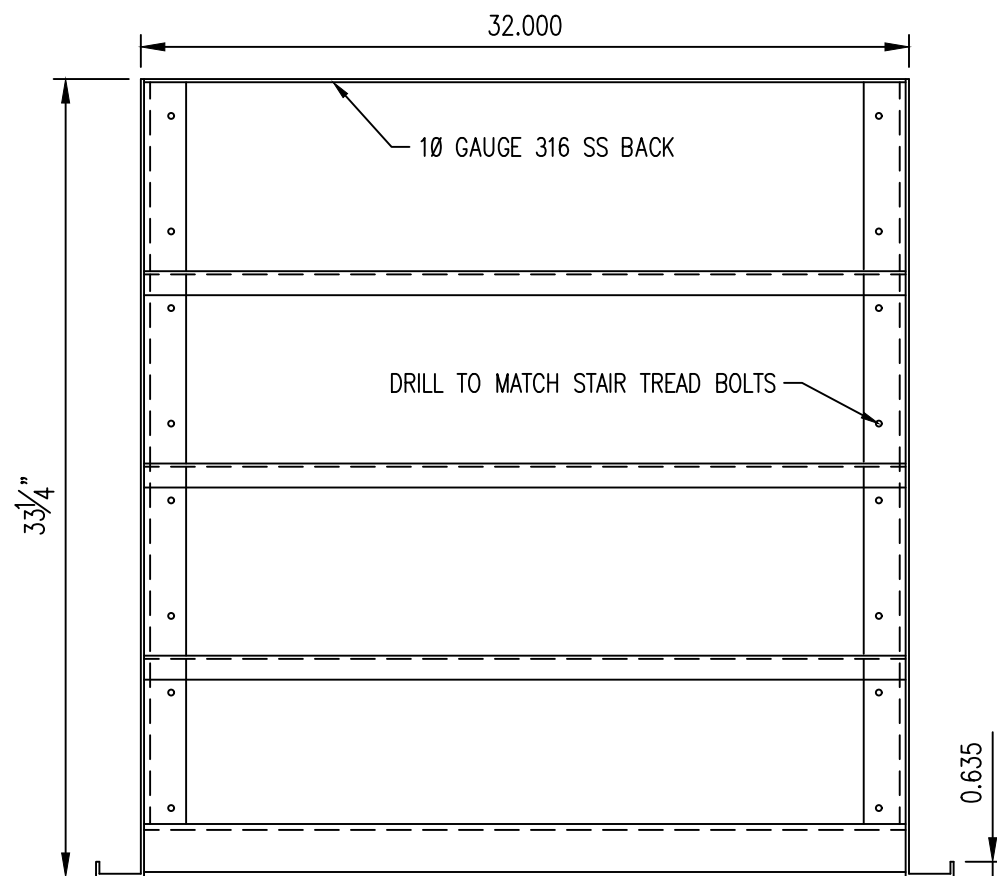
B
7 VESTIBULE TRAP DOOR - SECTION
SCALE: NTS

NOTES:

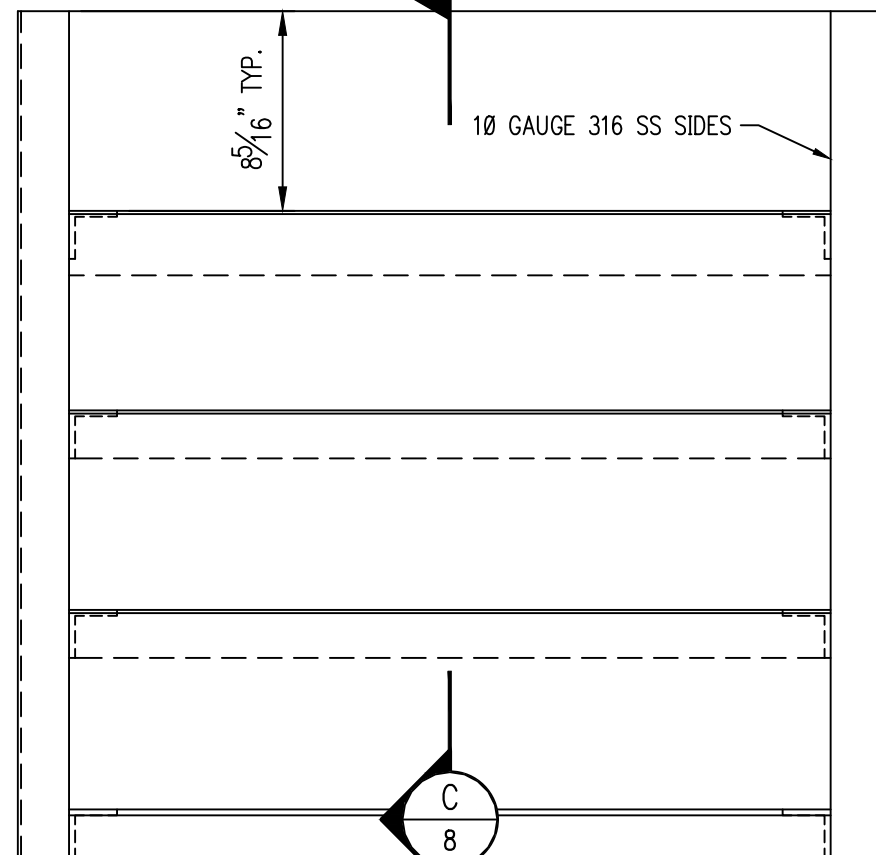
- 1) WELD PROCESS: FCAW/ SMAW/GTAW
- 2) CONTRACTOR TO VERIFY ALL MEASUREMENTS AND FIT OF TRAP DOOR TO STAIRWELL STRUCTURE. SHOP DRAWINGS TO BE SUBMITTED TO ARRC PRIOR TO FABRICATION OF DOORS.
- 3) TRAP DOORS ARE SYMMETRIC BOTH SIDES OF CAR.
- 4) THIS WORK PART OF ADD ALT #1.

 ALASKA RAILROAD CORPORATION ENGINEERING SERVICES P.O. BOX 107500, ANCHORAGE, ALASKA 99510-7500		
PROJECT :		
MOTIVE POWER AND EQUIPMENT PASSENGER COACHES		
TITLE:		
ARR 502 HEAVY PAINT AND BODY VESTIBULE TRAP DOOR FABRICATION		
DESIGNED BY: ARRC	SCALE : NO SCALE	AFE NO.:
DRAWN BY: CDL	DATE : 4/14/21	ACAD FILE:
CHECKED BY: ARRC		DWG NO. 7 OF 13
APPROVED BY: ARRC		

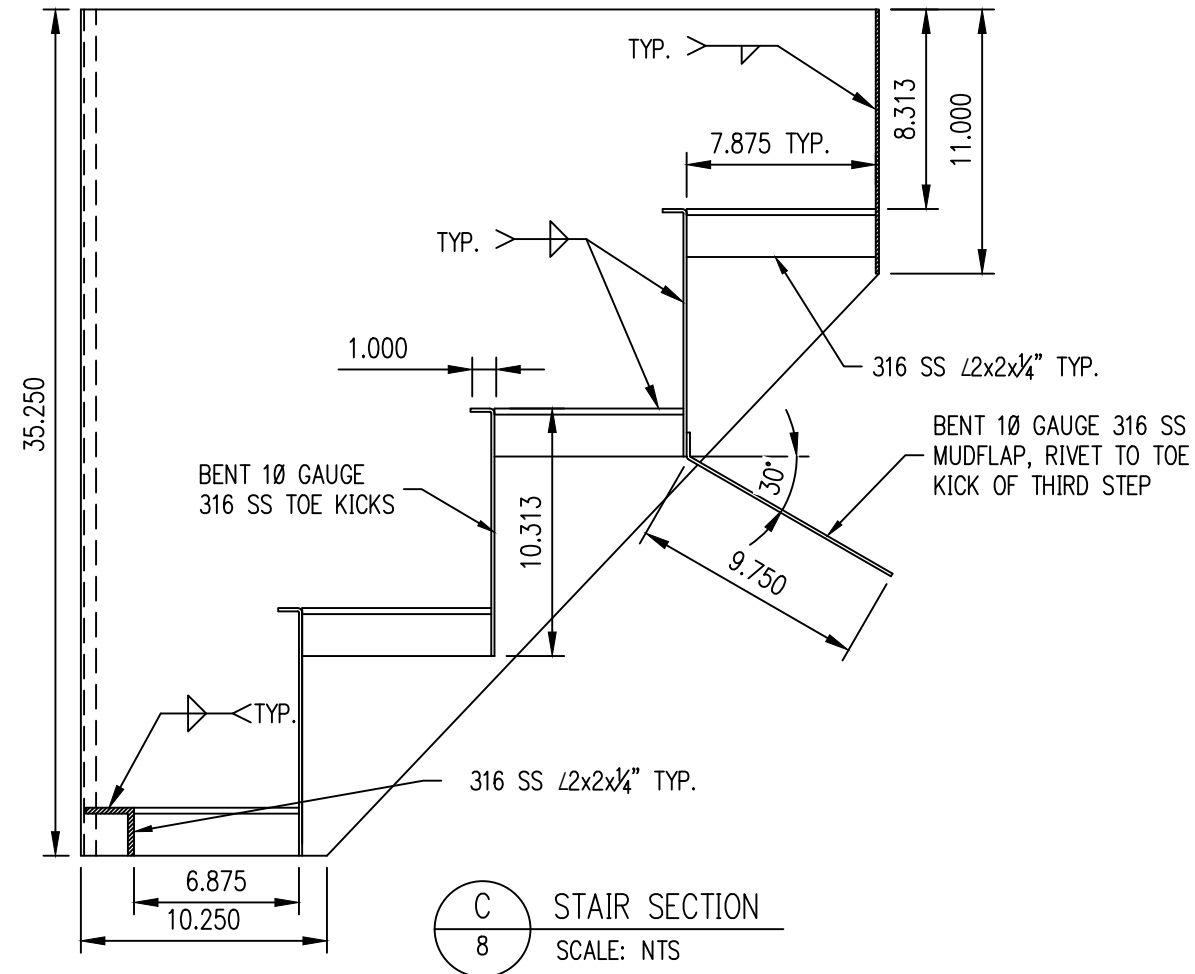
P:\Engineering\ACAD\PASSENGER COACHES\Passenger Equipment Rehab\2020 ARR 502 & 101 Heavy Repair and Paint\Passenger Coach ARR 502.dwg



A STAIR TOP VIEW
8 SCALE: NTS
2.000 BENT RETURN



B STAIR FRONT VIEW
8 SCALE: NTS

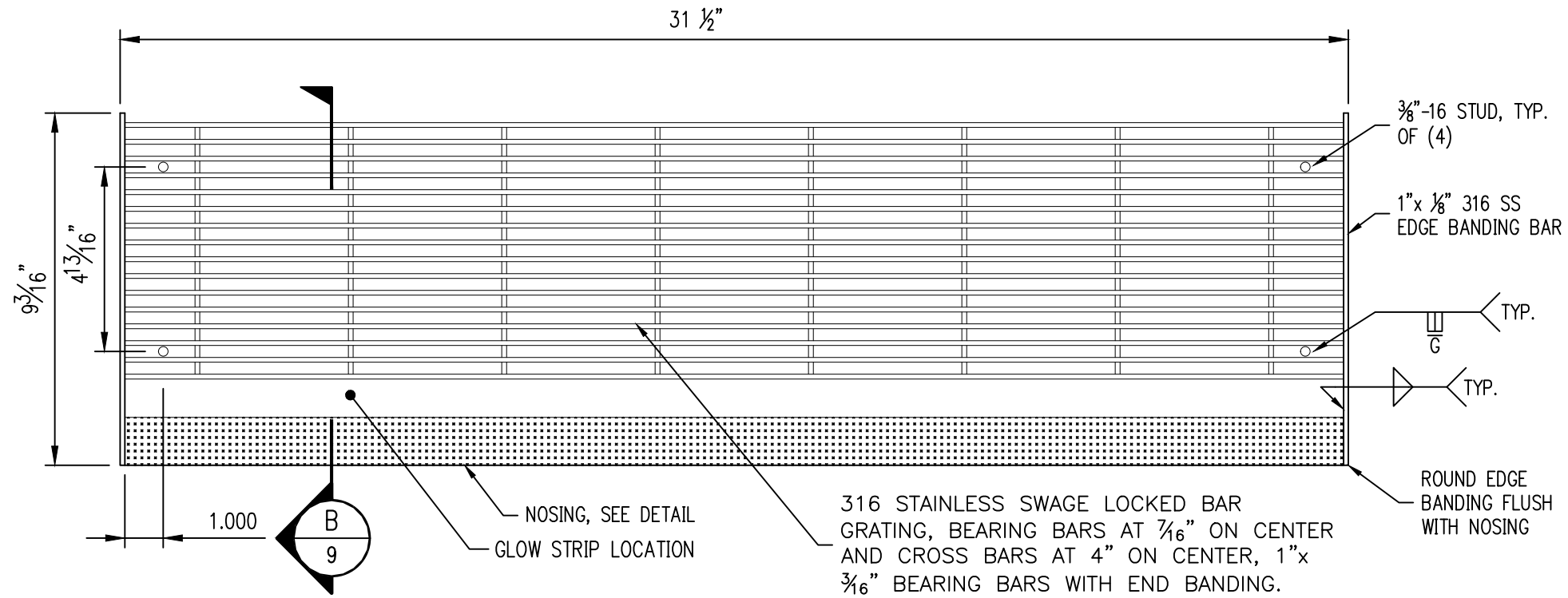


C STAIR SECTION
8 SCALE: NTS

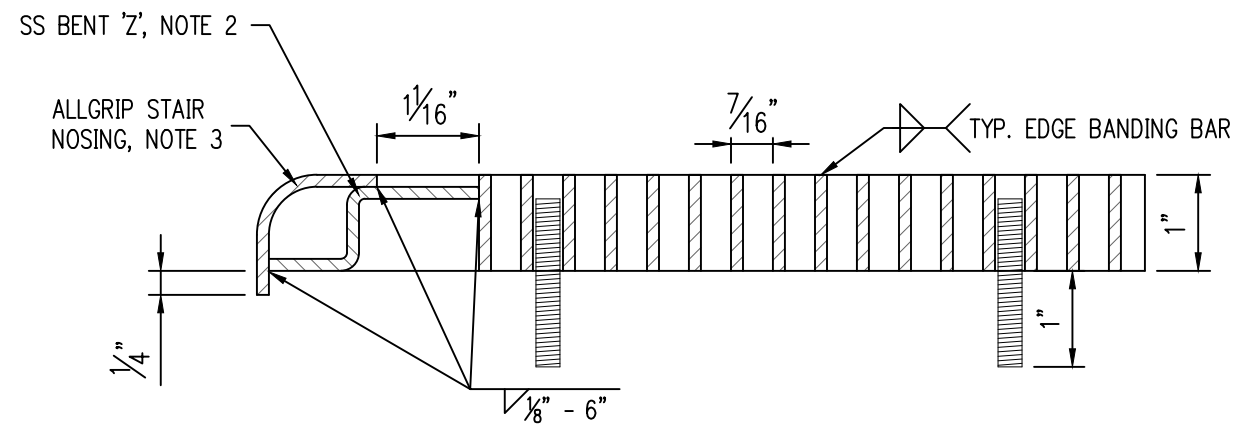
NOTES:

- 1) ALL MATERIAL 316 SS UNLESS OTHERWISE NOTED.
- 2) WELD PROCESS: FCAW/ SMAW/GTAW
- 3) CONTRACTOR TO VERIFY ALL MEASUREMENTS AND FIT OF STAIRS TO REBUILT CAR FRAME STRUCTURE. SHOP DRAWINGS TO BE SUBMITTED TO ARRC PRIOR TO FABRICATION OF STAIRS.
- 4) STAIRS ARE SYMMETRIC ON BOTH SIDES OF CAR.
- 5) THIS WORK PART OF ADD ALT #1.

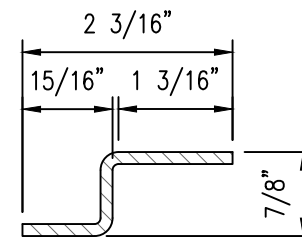
ALASKA RAILROAD CORPORATION ENGINEERING SERVICES P.O. BOX 107500, ANCHORAGE, ALASKA 99510-7500		
PROJECT : MOTIVE POWER AND EQUIPMENT PASSENGER COACHES		
TITLE: ARR 502 HEAVY PAINT AND BODY VESTIBULE STAIR BOX FABRICATION		
DESIGNED BY: ARRC	SCALE : NO SCALE	AFE NO.:
DRAWN BY: CDL	DATE : 4/14/21	ACAD FILE:
CHECKED BY: ARRC		DWG NO. 8 OF 13
APPROVED BY: ARRC		



A
9 STAIR TREAD TOP VIEW
SCALE: NTS



B
9 STAIR FRONT VIEW
SCALE: NTS

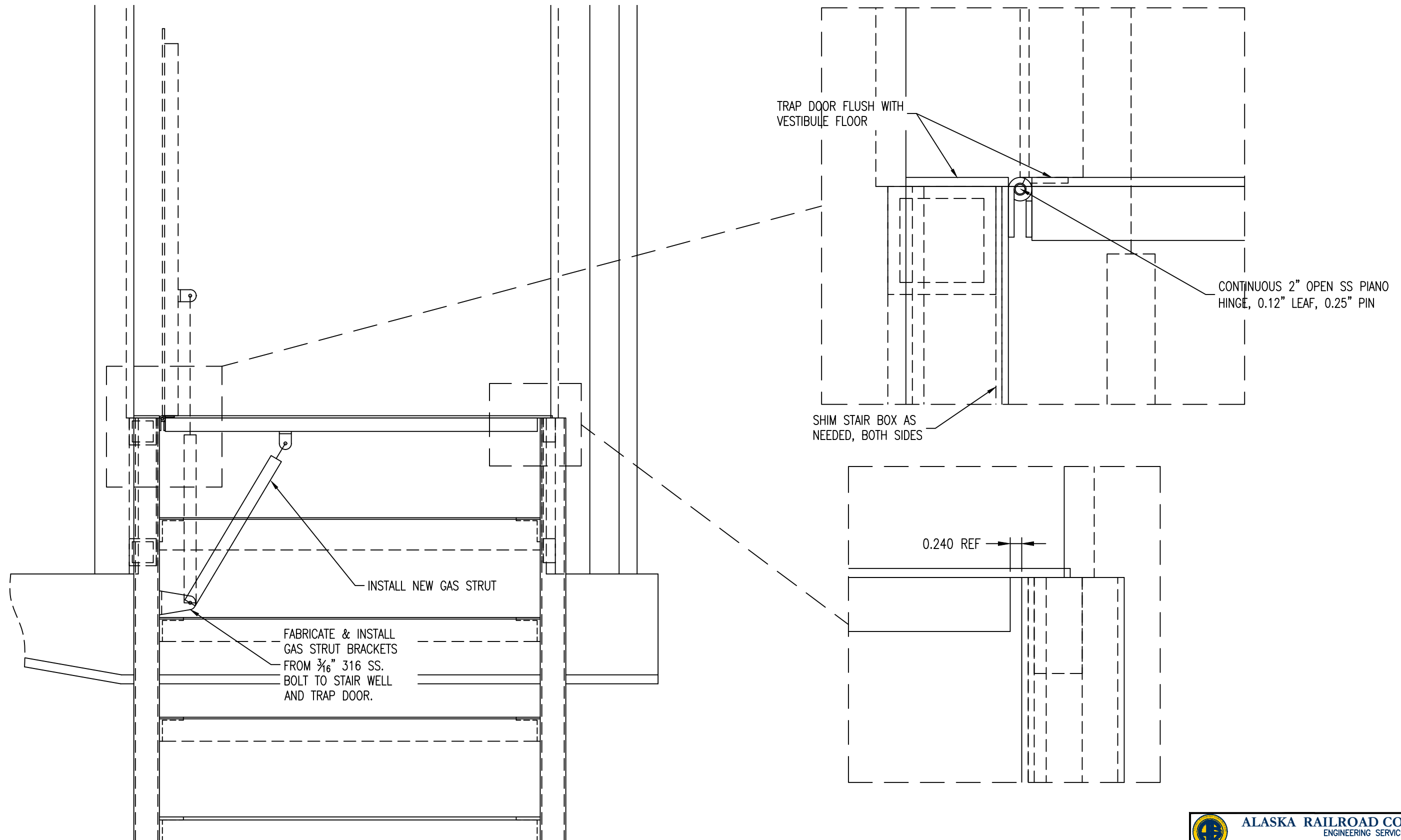


C
9 BENT 'Z' DETAIL
SCALE: NTS

NOTES:

- 1) ALL MATERIAL 316 SS UNLESS OTHERWISE NOTED.
- 2) FABRICATE BENT 'Z' FROM 1/8" 316 SS SHEET.
- 3) STAIR NOSING MATERIAL: 1 1/4" x 1 1/4" ALLGRIP® STANDARD OR APPROVED EQUAL.
- 4) WELD PROCESS: FCAW/SAW/GTAW
- 5) CONTRACTOR TO VERIFY ALL MEASUREMENTS AND FIT OF STAIRS TO REBUILT CAR FRAME STRUCTURE. SHOP DRAWINGS TO BE SUBMITTED TO ARRC PRIOR TO FABRICATION OF STAIRS.
- 6) STAIRS ARE SYMMETRIC ON BOTH SIDES OF CAR.
- 7) THIS WORK PART OF ADD ALT #1.


ALASKA RAILROAD CORPORATION ENGINEERING SERVICES P.O. BOX 107500, ANCHORAGE, ALASKA 99510-7500		
PROJECT : MOTIVE POWER AND EQUIPMENT PASSENGER COACHES		
TITLE: ARR 502 HEAVY PAINT AND BODY VESTIBULE STAIR TREAD FABRICATION		
DESIGNED BY: ARRC	SCALE : NO SCALE	AFE NO.:
DRAWN BY: CDL	DATE : 4/14/21	ACAD FILE:
CHECKED BY: ARRC		DWG NO. 9 OF 13
APPROVED BY: ARRC		

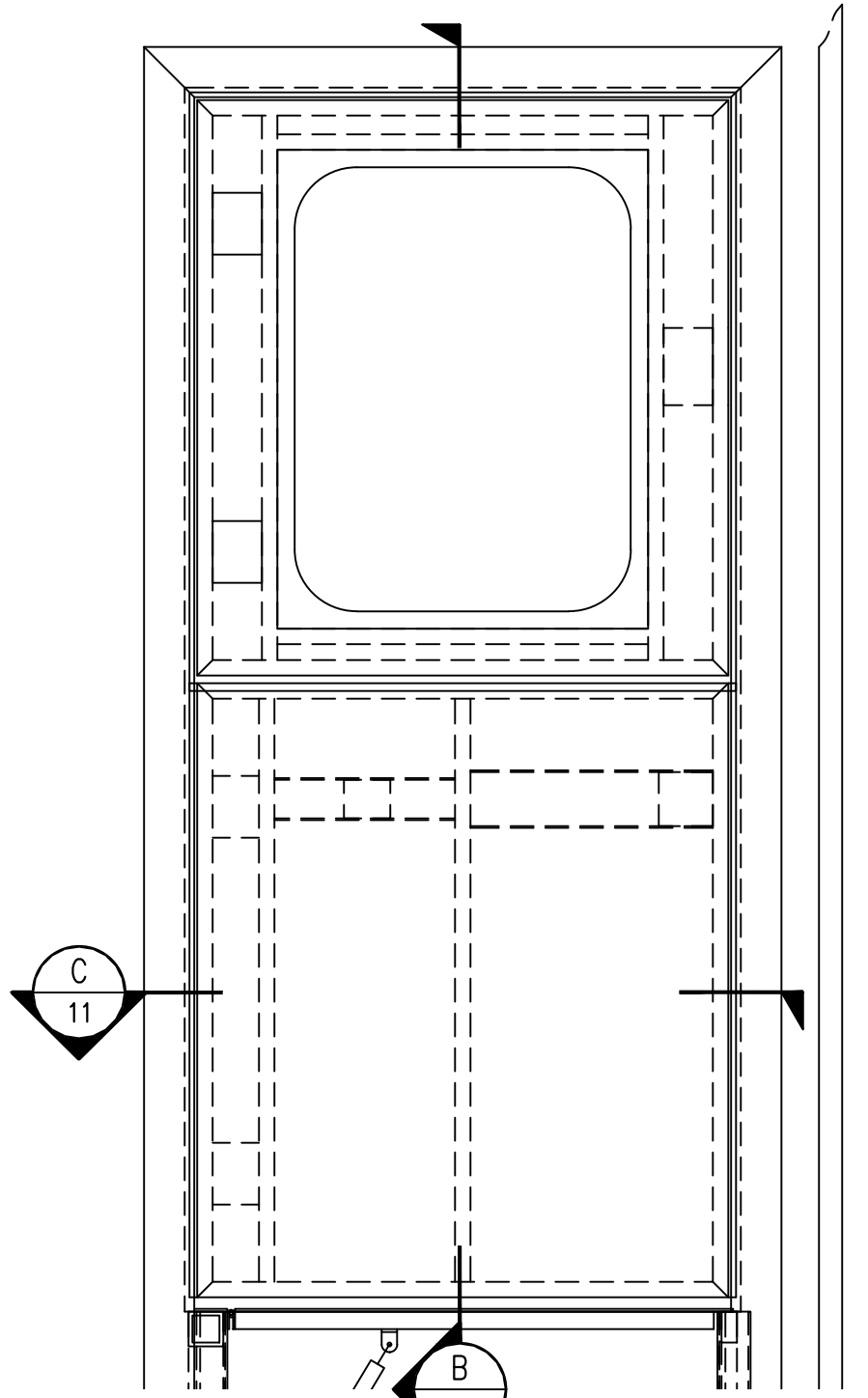


A
10 LEFT SIDE VESTIBULE STAIR ELEVATION
SCALE: NTS

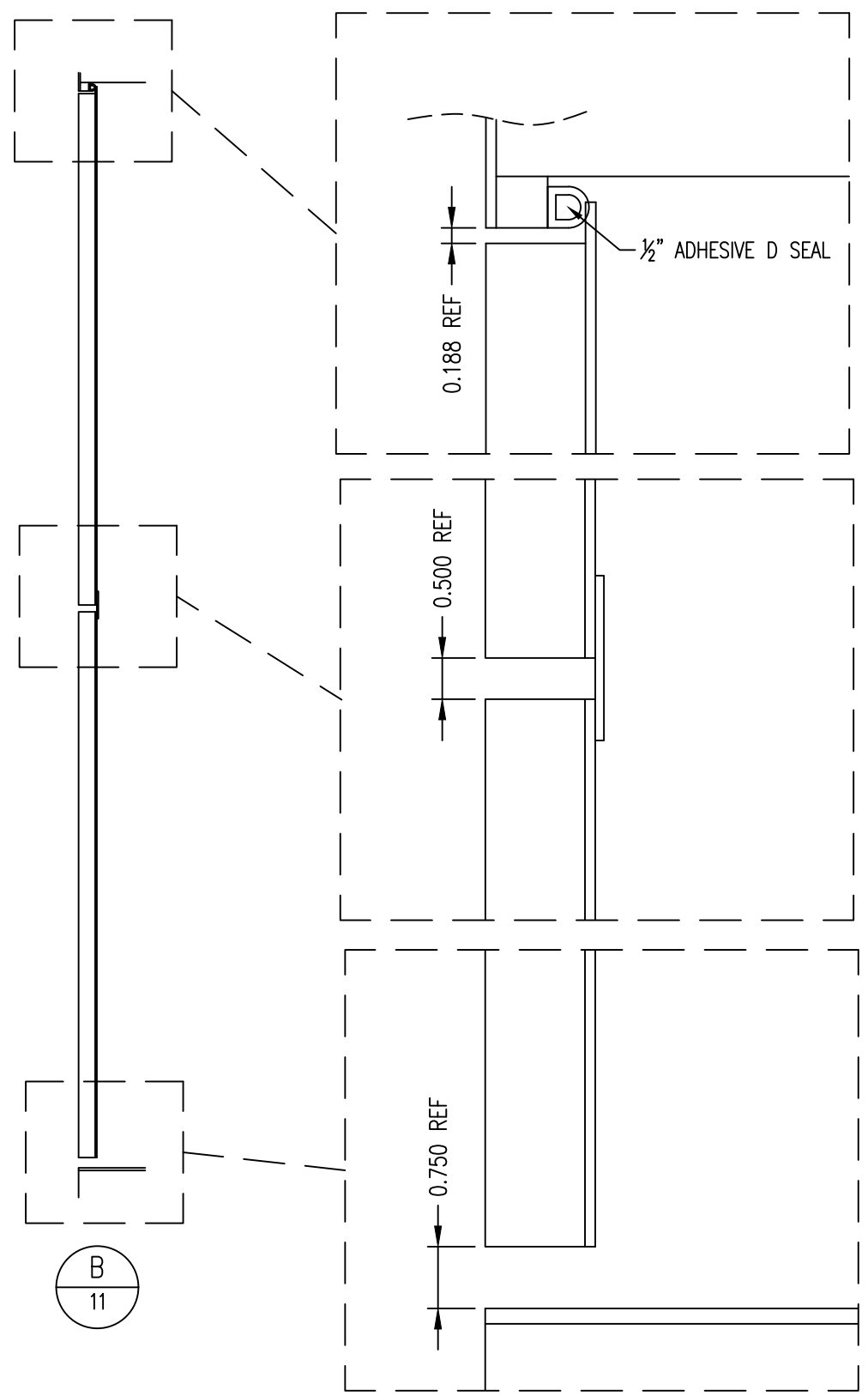
NOTES:

- 1) CONTRACTOR TO VERIFY ALL MEASUREMENTS AND FIT OF STAIRS TO REBUILT CAR FRAME STRUCTURE PRIOR TO INSTALLATION.
- 2) LEFT HAND STAIR INSTALLATION SHOWN, RIGHT HAND IS MIRROR IMAGE.
- 3) THIS WORK PART OF ADD ALT #1.

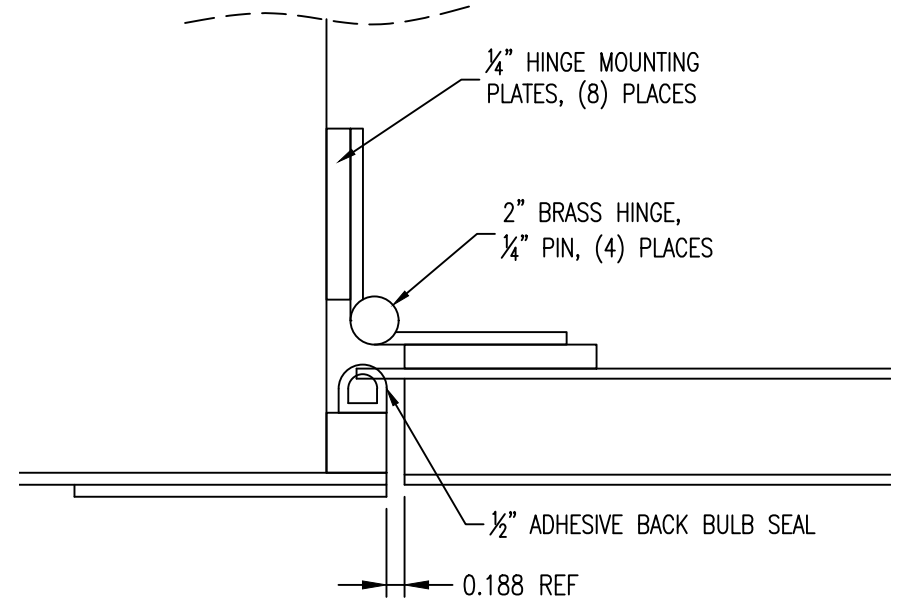
 ALASKA RAILROAD CORPORATION ENGINEERING SERVICES P.O. BOX 107500, ANCHORAGE, ALASKA 99510-7500		
PROJECT :		
MOTIVE POWER AND EQUIPMENT PASSENGER COACHES		
TITLE:		
ARR 502 HEAVY PAINT AND BODY VESTIBULE STAIR INSTALLATION		
DESIGNED BY: <u>ARRC</u>	SCALE : NO SCALE	AFE NO.:
DRAWN BY: <u>CDL</u>	DATE : 4/14/21	ACAD FILE:
CHECKED BY: <u>ARRC</u>		DWG NO. 10 OF 13
APPROVED BY: <u>ARRC</u>		



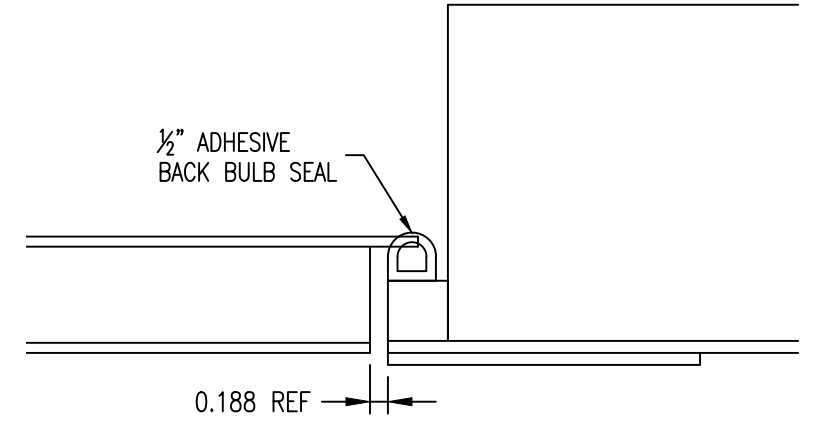
A
11 LEFT SIDE VESTIBULE DOOR ELEVATION
SCALE: NTS



C
11 LEFT SIDE VESTIBULE DOOR SECTION
SCALE: NTS



D
11 VESTIBULE DOOR INSTALLATION DETAIL
SCALE: NTS



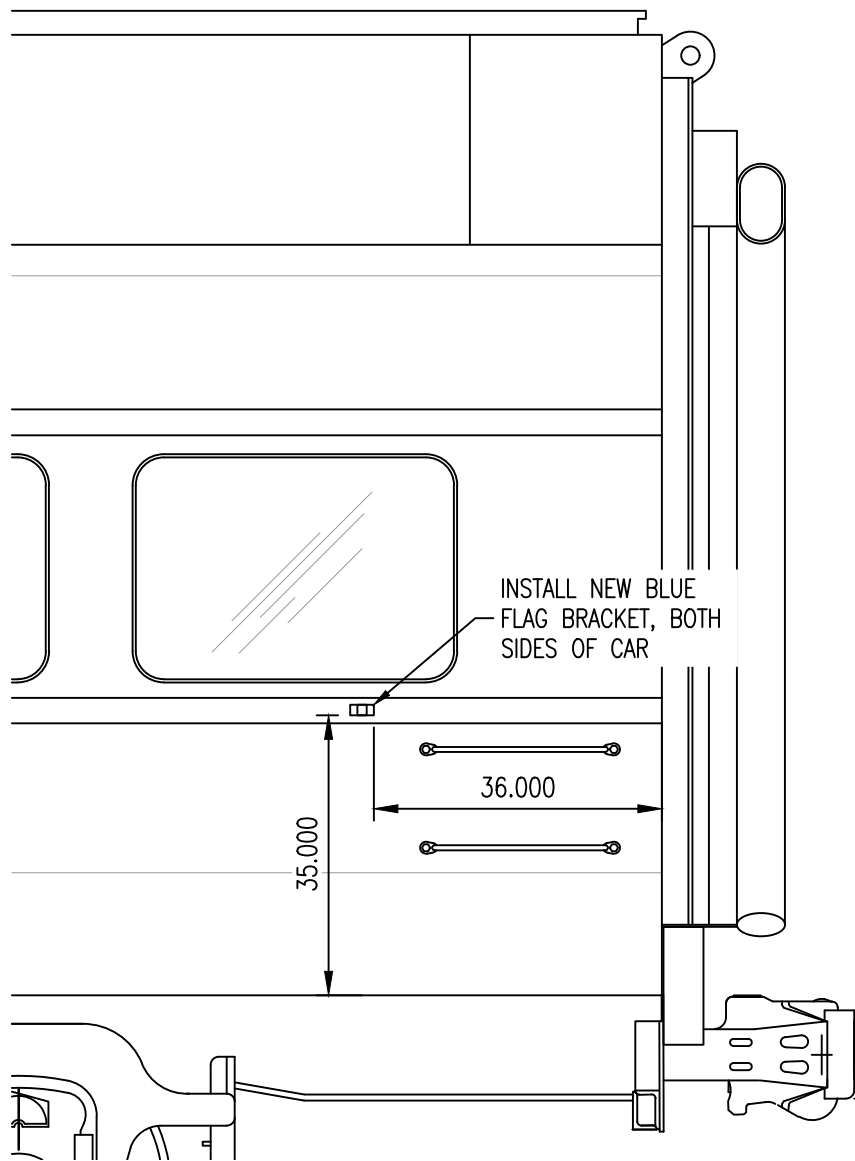
E
11 VESTIBULE DOOR INSTALLATION DETAIL
SCALE: NTS

NOTES:

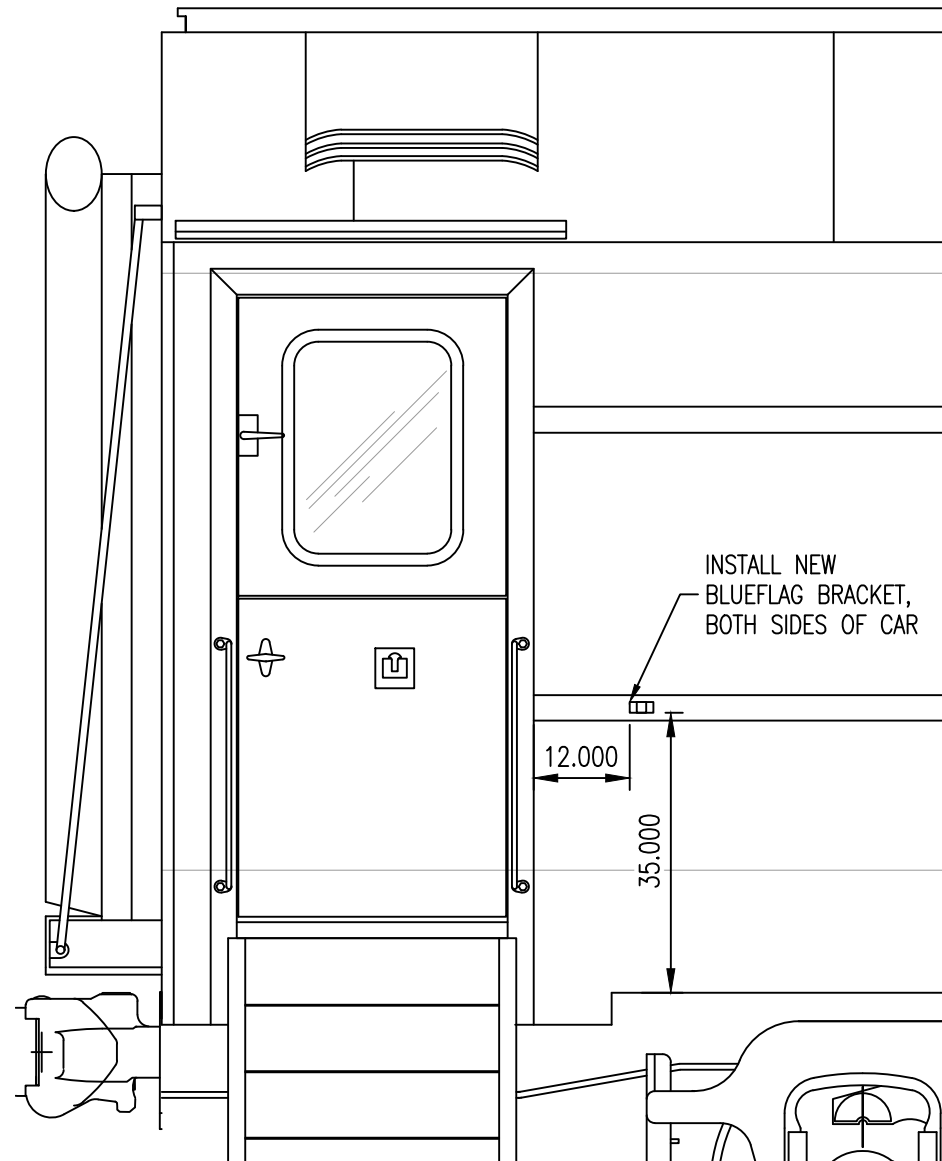
- 1) CONTRACTOR TO VERIFY ALL MEASUREMENTS AND FIT OF DOOR TO REBUILT CAR FRAME STRUCTURE PRIOR TO INSTALLATION.
- 2) LEFT HAND DOOR INSTALLATION SHOWN, RIGHT HAND IS MIRROR IMAGE.
- 3) THIS WORK PART OF ADD ALT #2.



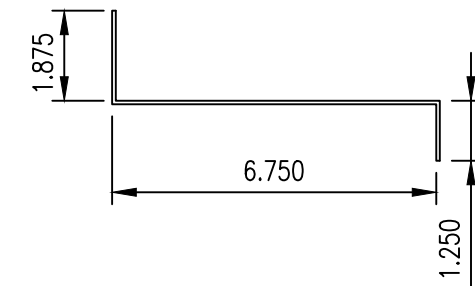
ALASKA RAILROAD CORPORATION ENGINEERING SERVICES P.O. BOX 107500, ANCHORAGE, ALASKA 99510-7500		
PROJECT :		
MOTIVE POWER AND EQUIPMENT PASSENGER COACHES		
TITLE:		
ARR 502 HEAVY PAINT AND BODY VESTIBULE DOOR INSTALLATION		
DESIGNED BY: ARRC	SCALE : NO SCALE	AFE NO.:
DRAWN BY: CDL	DATE : 4/14/21	ACAD FILE:
CHECKED BY: ARRC		DWG NO. 11 OF 13
APPROVED BY: ARRC		



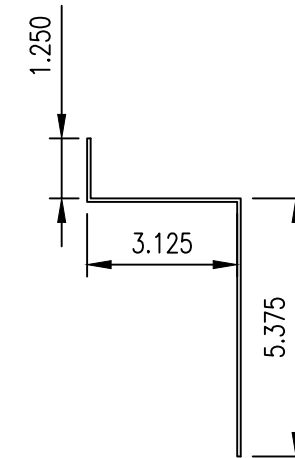
A
12 A-END BLUEFLAG BRACKET LOCATION
LEFT SIDE SHOWN, RIGHT MIRROR IMAGE



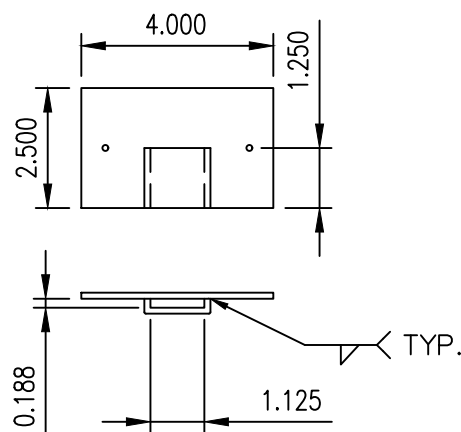
B
12 B-END BLUEFLAG BRACKET LOCATION
LEFT SIDE SHOWN, RIGHT MIRROR IMAGE



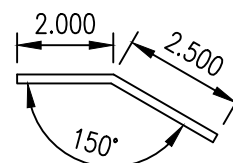
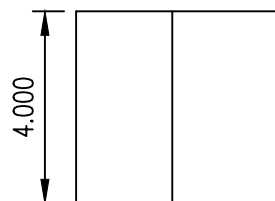
E
12 INNER BUFFER SEAL SUPPORT
SCALE: NTS



E
12 OUTER BUFFER SEAL SUPPORT
SCALE: NTS



C
12 BLUEFLAG BRACKET
SCALE: NTS



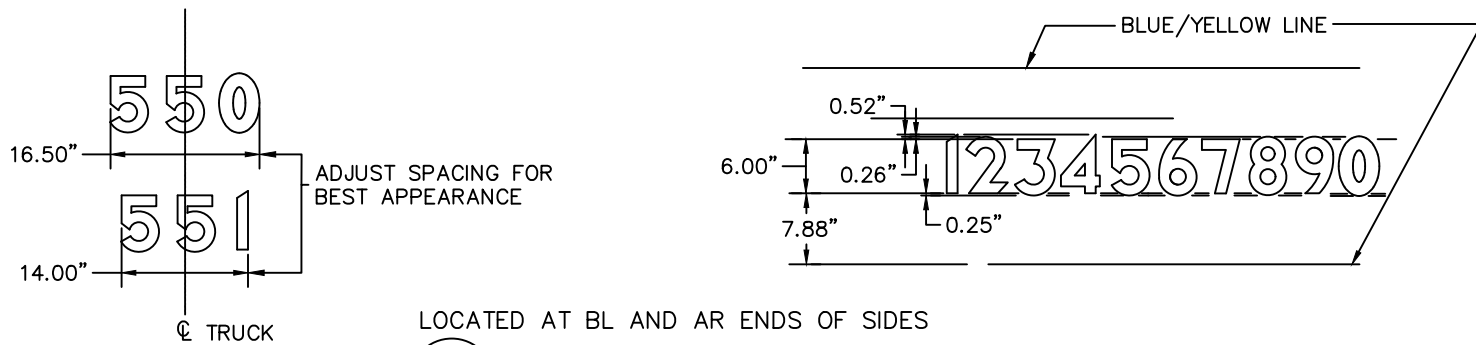
D
12 GATE HANGER BRACKET
SCALE: NTS

NOTES:

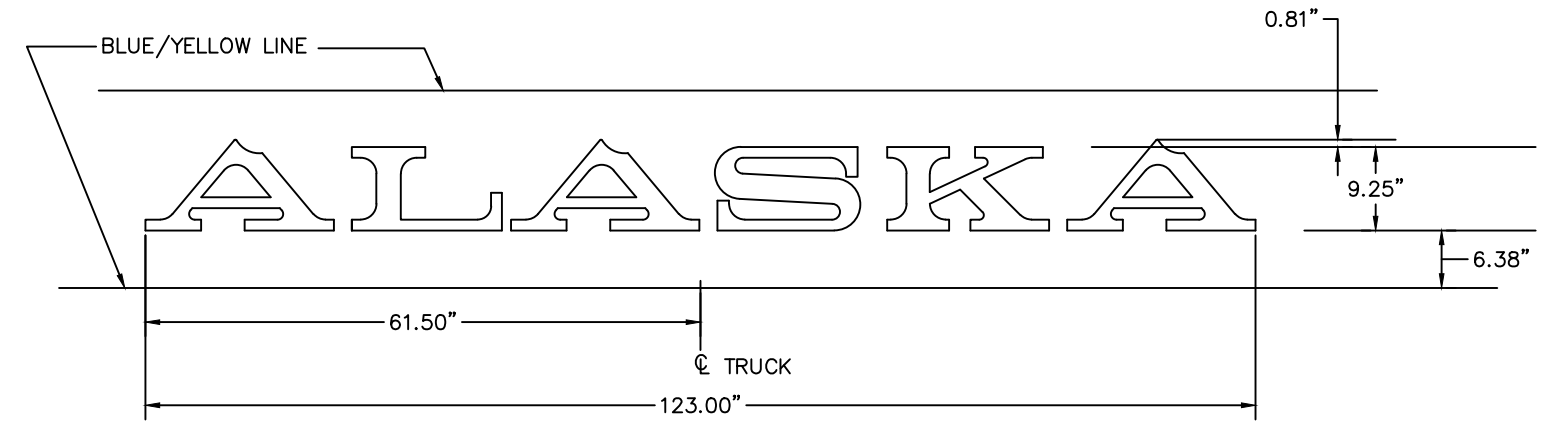
- 1) FABRICATE BLUEFLAG BRACKET FROM 1/8" 316 SS SHEET.
- 2) FABRICATE INNER AND OUTER BUFFER SEAL BRACKETS FROM 14 GAUGE ASTM A606 SHEET.
- 3) FABRICATE GATE HANGER BRACKET FROM 3/16" ASTM A588 PLATE.
- 4) WELD PROCESS: FCAW/SAW/GTAW

ALASKA RAILROAD CORPORATION ENGINEERING SERVICES P.O. BOX 107500, ANCHORAGE, ALASKA 99510-7500		
PROJECT :		
MOTIVE POWER AND EQUIPMENT PASSENGER COACHES		
TITLE:		
ARR 502 HEAVY PAINT AND BODY BRACKET INSTALLATION AND DETAILS		
DESIGNED BY: ARRC	SCALE : NO SCALE	AFE NO.:
DRAWN BY: CDL		ACAD FILE:
CHECKED BY: ARRC	DATE : 4/14/21	DWG NO.
APPROVED BY: ARRC		12 OF 13

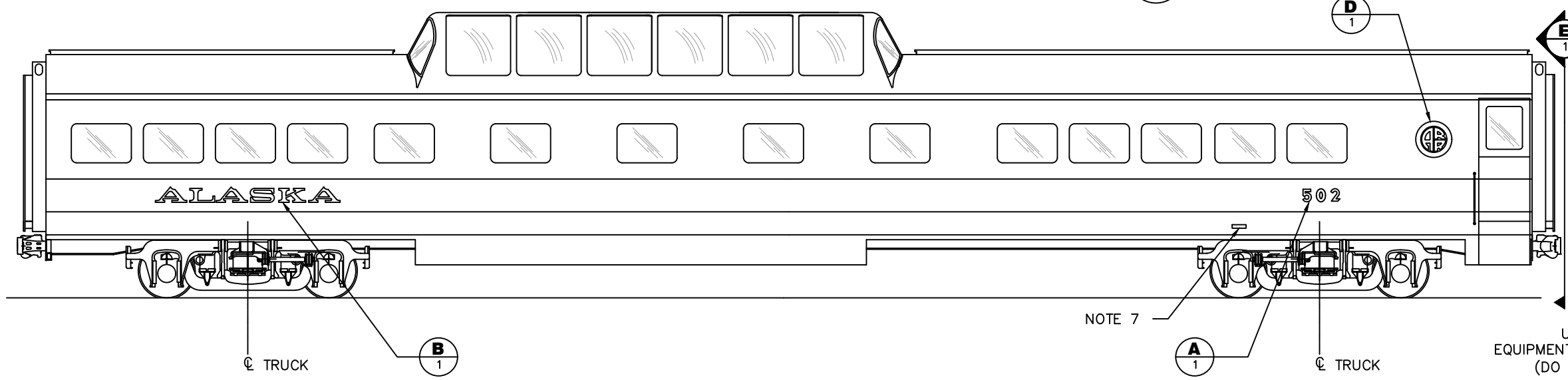
P:\Engineering\ACAD\PASSENGER COACHES\Passenger Equipment Rehab\2020 ARR 502 & 101 Heavy Repair and Paint\Passenger Coach ARR 502.dwg



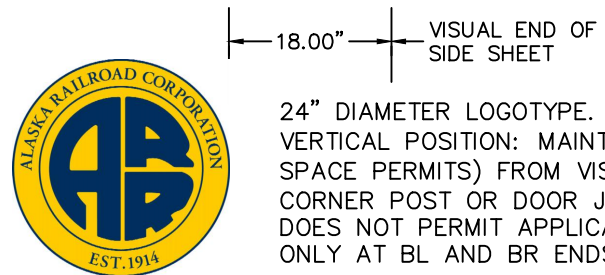
LOCATED AT BL AND AR ENDS OF SIDES
A **DETAIL A**
 1 NO SCALE



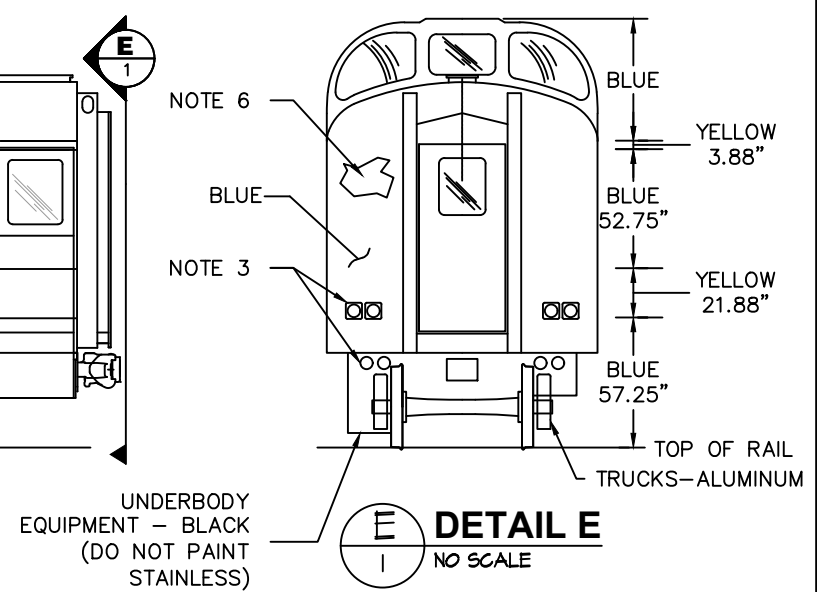
LOCATED AT BR AND AL ENDS OF SIDES
B **DETAIL B**
 1 NO SCALE



- GENERAL NOTES:**
- DO NOT PAINT STAINLESS STEEL, OTHER BRIGHT METAL, COUPLERS OR WHEELS.
 - ALL PAINTING TO BE IN ACCORDANCE WITH ARRC SPECIFICATION FOR PAINTING OF ROLLING STOCK.
 - COLOR CODE FOR TRAINLINE RECEPTACLES:
 COMMUNICATIONS: LIGHT BLUE
 DUMMY: WHITE
 POWER: RED
 LOCOMOTIVE MU: YELLOW
 - DETAILS OF GRAPHICS ARE DOCUMENTED IN THE AUTOCAD FILE OF THIS DRAWING.
 - DIMENSIONS SHOWN IN DETAIL E APPLY AT BODY BOLSTERS. LINES ARE TO FOLLOW CARBODY CAMBER.
 - INTERIOR OF VESTIBULES ARE CONSIDERED EXTERIOR. VERTICAL SURFACES AND CEILINGS ARE TO BE PAINTED BLUE.
 - PAINT ALL UNDER CAR EQUIPMENT BLACK, TRUCKS TO BE PAINTED ALUMINUM SILVER.
 - STAINLESS STEEL GRAB-IRONS TO REMAIN UNPAINTED, MILD STEEL GRAB IRONS MOUNTED TO A OR B ENDS PAINTED YELLOW.
 - AEI TAGS (2) ARE SIDE SPECIFIC; MARK AND REPLACE TO SAME SIDE, SAME LOCATION.
 - NEW RETRO-REFLECTIVE EMERGENCY ACCESS SIGNS WILL BE INSTALLED BY ALASKA RAILROAD.
 - DRAWING DOES NOT PURPORT TO SHOW CONSTRUCTION IN ABSOLUTE AND COMPLETE DETAIL.



D **DETAIL D**
 1 NO SCALE



UNDERBODY EQUIPMENT - BLACK (DO NOT PAINT STAINLESS)
E **DETAIL E**
 1 NO SCALE

ALASKA RAILROAD CORPORATION ENGINEERING SERVICES P.O. BOX 107500, ANCHORAGE, ALASKA 99510-7500		
PROJECT : MOTIVE POWER AND EQUIPMENT PASSENGER COACHES		
TITLE: ARR 502 HEAVY PAINT AND BODY PAINT AND STYLING DETAILS		
DESIGNED BY: ARRC	SCALE : NO SCALE	AFE NO.:
DRAWN BY: ARRC	DATE : 4/14/21	ACAD FILE:
CHECKED BY: ARRC		DWG NO. 13 OF 13
APPROVED BY: ARRC		