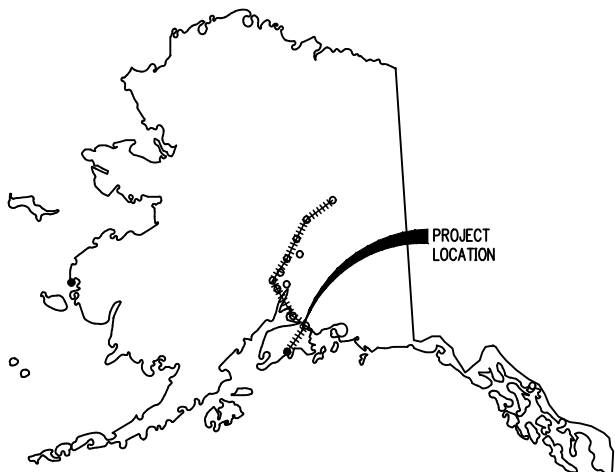


**VICINITY MAP**

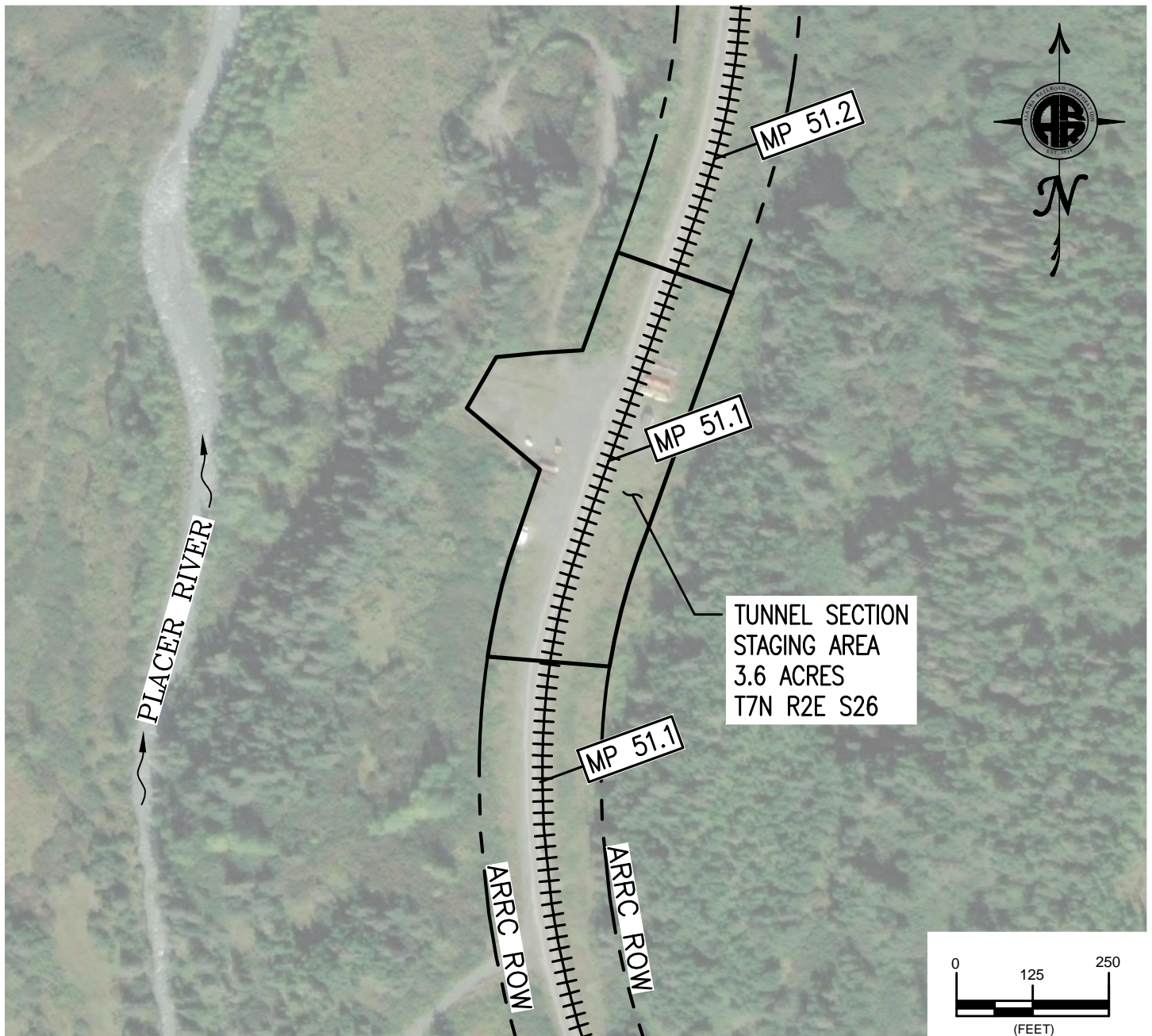


**STATE MAP**  
NTS

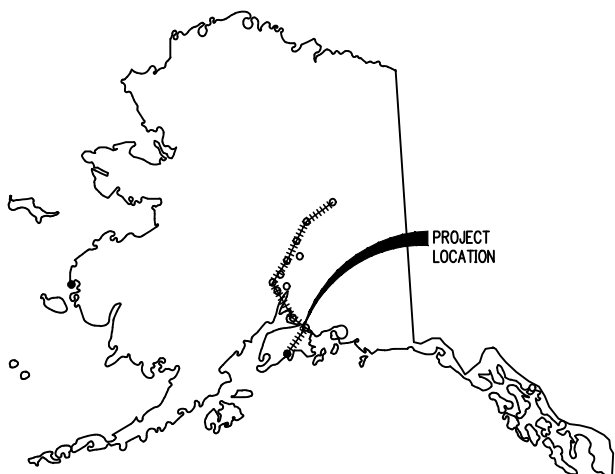


**ALASKA RAILROAD CORP.**  
327 W. Ship Creek Avenue  
P.O. Box 107500  
ANCHORAGE, ALASKA 99510-7500

**2021 SOUTHEAST WASHOUT  
MP 52.24  
VICINITY MAP**



**PLAN**



**STATE MAP**  
NTS

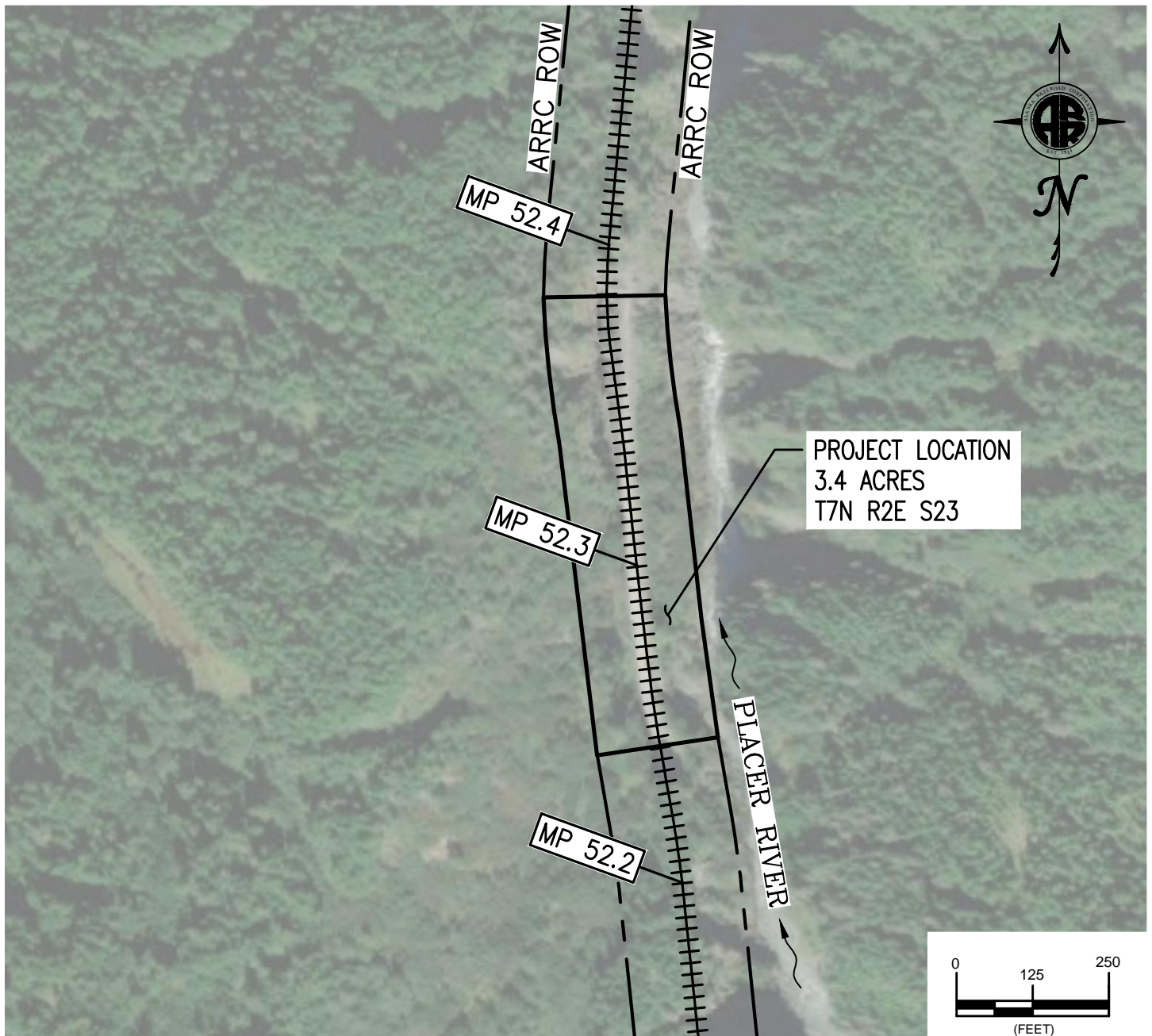


ALASKA RAILROAD CORP.  
327 W. Ship Creek Avenue  
P.O. Box 107500  
ANCHORAGE, ALASKA 99510-7500

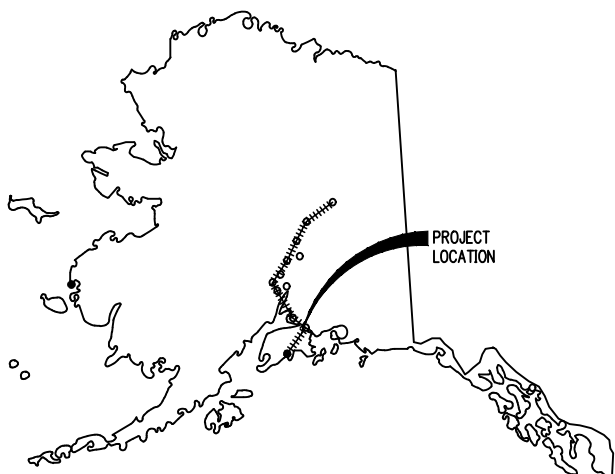
2021 SOUTHEND WASHOUT  
MP 52.24  
TUNNEL STAGING AREA

2/14/2022

FIGURE 2 OF 4



**PLAN**



**STATE MAP**  
NTS

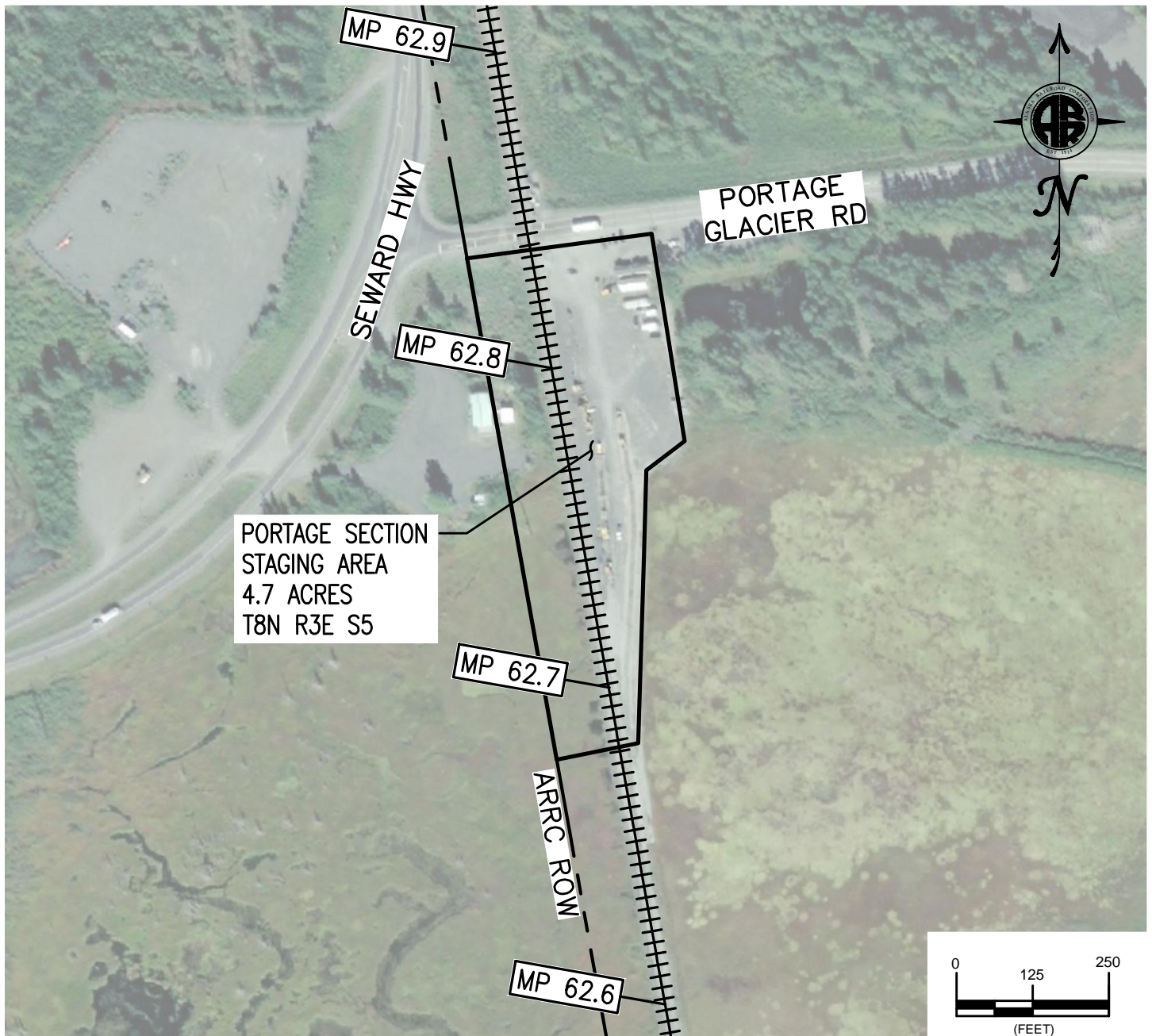


ALASKA RAILROAD CORP.  
327 W. Ship Creek Avenue  
P.O. Box 107500  
ANCHORAGE, ALASKA 99510-7500

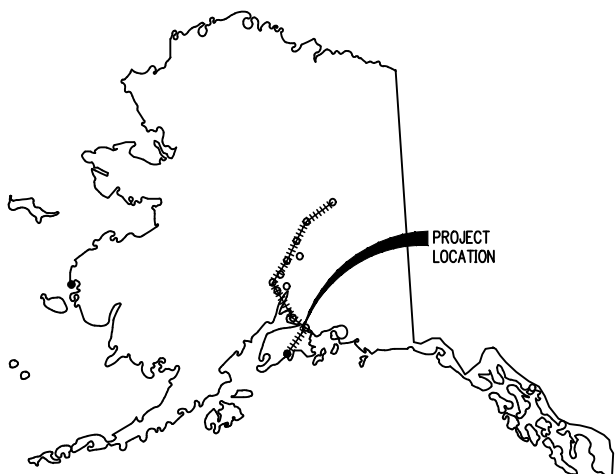
2021 SOUTHEND WASHOUT  
MP 52.24  
WASHOUT SITE

2/14/2022

FIGURE 3 OF 4



**PLAN**



**STATE MAP**  
NTS



**ALASKA RAILROAD CORP.**  
327 W. Ship Creek Avenue  
P.O. Box 107500  
ANCHORAGE, ALASKA 99510-7500

**2021 SOUTHEND WASHOUT  
MP 52.24  
PORTAGE SECTION STAGING**

2/14/2022

FIGURE 4 OF 4