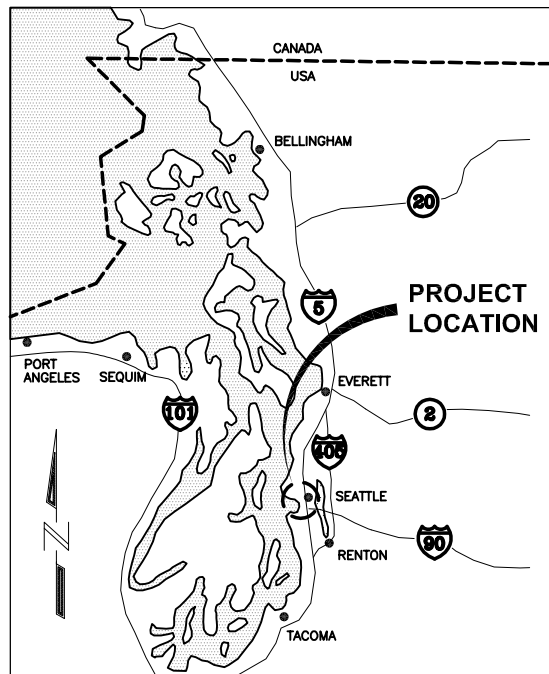


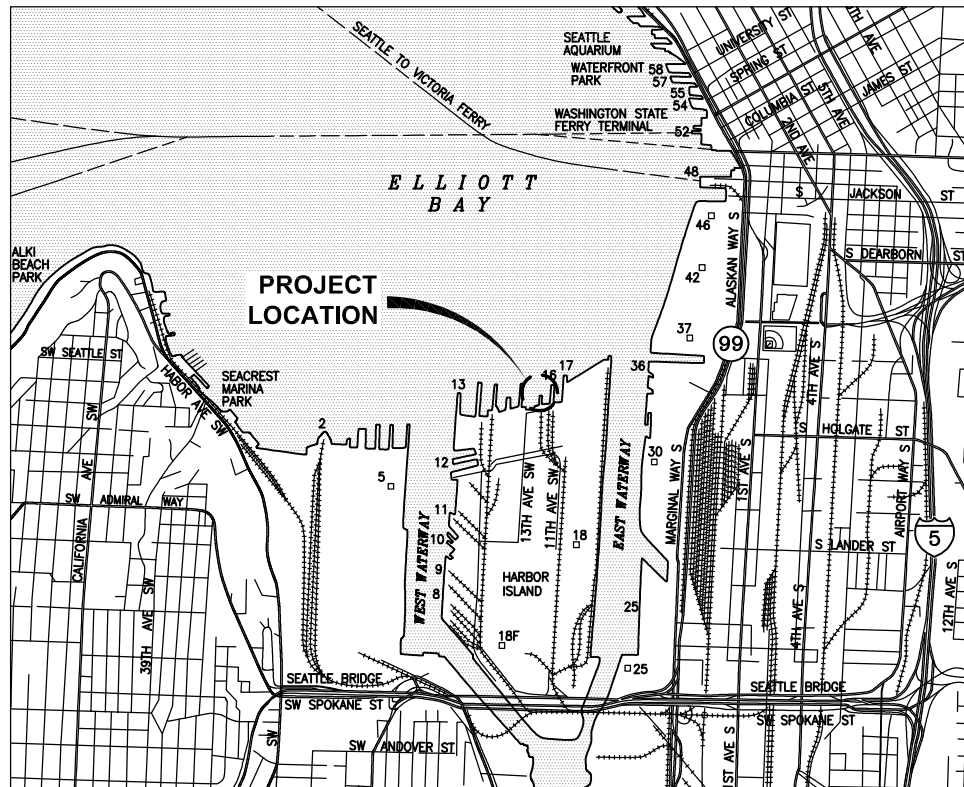
ALASKA RAILROAD CORPORATION

PIER 15.5 COATINGS

SEATTLE, WA



VICINITY MAP




LOCATION MAP

| SHEET INDEX | No. |
|--|-----|
| TITLE SHEET, TIDAL DATA, AND SHEET INDEX | 1 |
| GENERAL NOTES | 2 |
| SITE PLAN | 3 |
| BRIDGE ELEVATION AND PHOTOS 1 OF 2 | 4 |
| BRIDGE PHOTOS 2 OF 2 | 5 |
| PONTOON SECTION AND GUIDE DOLPHIN | 6 |

| TIDAL DATA | ELEV. (FT) |
|---|------------|
| HIGHEST OBSERVED WATER LEVEL (01/27/1983) | +14.48 |
| HIGH TIDE LINE (HTL) | +13.05 |
| MEAN HIGHER HIGH WATER (MHHW) | +11.36 |
| MEAN HIGH WATER (MHW) | +10.49 |
| ORDINARY HIGH WATER (OHW) | +10.49 |
| MEAN TIDE LEVEL (MTL) | +6.66 |
| MEAN SEA LEVEL (MSL) | +6.64 |
| MEAN LOW WATER (MLW) | +2.83 |
| MEAN LOWER LOW WATER (MLLW) | 0.0 |
| LOWEST OBSERVED WATER LEVEL (1/04/1916) | -5.04 |


NOTE: TIDAL INFORMATION BASED ON NOAA'S PUBLICATION SEATTLE, WASHINGTON 9447130 FOR THE TIDAL EPOCH 1983-2001. PROJECT DATUM: MLLW.

DIGITAL SIGNATURE:

 THIS DRAWING SET WAS CREATED AS AN ELECTRONIC DOCUMENT. IF THE ELECTRONIC DOCUMENT DOES NOT INCLUDE A VERIFIABLE DIGITAL SIGNATURE IN THE BOX ABOVE, PLEASE CONTACT THE ENGINEER OF RECORD FOR THE ORIGINAL CERTIFIED ELECTRONIC DOCUMENT.

P | N | D
ENGINEERS, INC.
 3240 Eastlake Avenue E.
 Seattle, Washington 98102
 P: 206.624.1387
 www.pndengineers.com

ALASKA RAILROAD CORPORATION

PND ENGINEERS, INC. IS NOT RESPONSIBLE FOR SAFETY PROGRAMS, METHODS OR PROCEDURES OF OPERATION, OR THE CONSTRUCTION OF THE DESIGN SHOWN ON THESE DRAWINGS. WHERE SPECIFICATIONS ARE GENERAL OR NOT CALLED OUT, THE SPECIFICATIONS SHALL CONFORM TO STANDARDS OF INDUSTRY. DRAWINGS ARE FOR USE ON THIS PROJECT ONLY AND ARE NOT INTENDED FOR REUSE WITHOUT WRITTEN APPROVAL FROM PND. DRAWINGS ARE ALSO NOT TO BE USED IN ANY MANNER THAT WOULD CONSTITUTE A DETRIMENT DIRECTLY OR INDIRECTLY TO PND.


 12/14/2023

| REVISIONS | | |
|-----------|------|-------------|
| REV | DATE | DESCRIPTION |
| | | |
| | | |
| | | |
| | | |

ISSUED FOR CONSTRUCTION

**AKRR PIER 15.5 COATINGS
SEATTLE, WA**

TITLE: **TILE SHEET, TIDAL DATA, AND SHEET INDEX**

| | | |
|------------------|-------------------------|---------------|
| DESIGNED BY: BKP | PROJECT NO: 201122.06.1 | SHEET NO: |
| DRAWN BY: GD | DATE: DECEMBER 14, 2023 | 1 OF 6 |
| CHECKED BY: | SCALE: NOTED | |

12/14/23 \\PND\SERVER1\Projects\2020\201122_ARRC_Term_Marine_Engineering\06.1_2022_Capital_Improv_SEA_P15.5\C. Drawings\Issued for Construction\201122.06.1-01.dwg

GENERAL NOTES

The following General Notes are applicable and shall be considered part of this specification on all Drawing Sheets.

GENERAL OVERVIEW

UNITS STANDARD

The primary unit system is in Imperial (US) Units standard. All dimensions shown are in feet and inches unless otherwise noted.

MATERIALS AND CONSTRUCTION

GENERAL

All material and equipment incorporated into this project shall be new unless otherwise noted on the plans. Material not specifically noted in these General Notes or elsewhere on the drawings shall be submitted by the CONTRACTOR for approval by the ENGINEER. Approval will be based on conformance to current standards utilized by the Owner. All materials shall conform to good workmanship, acceptable industry standards and manufacturer's recommendations.

The CONTRACTOR shall employ the necessary means and methods to contain contaminants and apply coatings in a manner that does not impede on the OWNER's barge loading/unloading operations at the facility. The items listed on these drawings to be coated shall be coated in place.

SURVEY

The CONTRACTOR is responsible to verify all dimensions, surface areas, and coating repair locations shown on the drawings and shall Coordinate with Engineer on any discrepancies.

CONSTRUCTION SCHEDULE LIMITATIONS

The OWNER anticipates barge loading/unloading operations to occur generally during any given seven-day work week, Wednesdays through Friday. However, the CONTRACTOR should anticipate occasional deviations from said schedule. For bidding purposes, the CONTRACTOR shall anticipate a minimum of three 24-hour uninterrupted work periods during the seven-day work week (Total 72-hours). The CONTRACTOR shall coordinate daily with the OWNER on their anticipated barge schedule to identify work periods.

PROTECTIVE COATINGS

These general notes provide an abbreviated description of the specified coating systems to be used on this project. The Project Bid Documents which includes the protective coatings specifications shall be referenced by the CONTRACTOR. The Project Bid Documents governs in the event any discrepancies are found between these general notes and the Project Bid Documents.

Generally, the coating zones and respective products are summarized in the following table. See coating schedule and detail drawings for clarification on application locations. Surface preparation and coating application shall be completed in a manner as specified in the Project Bid Documents.

| COATING ZONES AND PRODUCTS | |
|----------------------------|--|
| COATING ZONE | NOTE |
| ZONE 1 | PRIMER: TNEMEC SERIES 91H20 ZINC RICH URETHANE APPLIED AT 2.5-3.5 MILS DFT, OR APPROVED EQUAL |
| | STRIPE: TNEMEC SERIES N69 POLYAMIDOAMINE EPOXY, OR APPROVED EQUAL |
| | INTERMEDIATE: TNEMEC SERIES N69 POLYAMIDOAMINE EPOXY APPLIED AT 4-8 MILS DFT, OR APPROVED EQUAL |
| ZONE 2 | FINISH: TNEMEC SERIES 142 GLASS FLAKE REINFORCED POLYAMINE EPOXY APPLIED AT 10-14 MILS DFT, OR APPROVED EQUAL |
| | PRIMER: ALOCIT 28.15 APPLIED AT 8-10 MILS DFT, OR APPROVED EQUAL FINISH: ALOCIT 28.15 APPLIED AT 8-10 MILS DFT (TOTAL DFT PRIMER + FINISH = 16 MILS MINIMUM), OR APPROVED EQUAL |

CONTAINMENT SYSTEM

The CONTRACTOR shall design and provide a containment system for the capture, containment, collection, storage and disposal of the waste water materials generated by the work. All debris removed from the surfaces of the structure shall be captured, contained, and disposed of in accordance with the project permitting requirements. All coating overspray and coatings not otherwise adhering to the steel surfaces shall be captured, contained, and disposed of in accordance with the project permitting requirements. CONTRACTOR shall refer to the Project Bid Documents for more information.

| COATING SCHEDULE | | | | | |
|------------------|------------------------------------|--------------|---|---------------------------------|----------------------|
| NO. | ITEM | COATING ZONE | NOTE | ESTIMATED SURFACE AREA (SQ FT)* | BID PRIORITY |
| 1 | PONTOON SUPPORTS | 2 | - | 3,000 | BASE BID |
| 2 | PONTOON EXTERIOR | 2 | INCLUDES PONTOON SUPPORTS BELOW WATER LINE, AS APPLICABLE | 3,000 | BASE BID |
| 3 | PONTOON ACCESS TUBES EXTERIOR | 2 | REFERENCE SHEET 5, PONTOON SECTION FACING NORTH FOR DETAILS | 750 | BASE BID |
| 4 | GIRDERS AND BRACING | 1 | UNLESS OTHERWISE NOTED, COATED WORK INCLUDES ALL STEEL MATERIAL (I.E. GIRDER PLATES, WELDMENTS, VENT PIPE, LADDERS, CONNECTORS, BEARINGS, ETC.) BETWEEN THE GIRDER TOP FLANGE TOP SURFACE AND BOTTOM FLANGE BOTTOM SURFACE. OK TO OMIT COATING ON TOP SURFACE OF GIRDER TOP FLANGE. | 11,000 | ADDITIVE ALTERNATE 1 |
| 5 | GUIDE DOLPHINS STEEL PIPE PILE | 2 | REFERENCE SHEET 5, GUIDE DOLPHIN SIDE ELEVATION FOR DETAILS | 500 | ADDITIVE ALTERNATE 2 |
| 6 | GUIDE DOLPHIN FENDER PANELS | 2 | REFERENCE SHEET 5, GUIDE DOLPHIN SIDE ELEVATION FOR DETAILS. OK TO OMIT UHMW SIDE OF WIDE FLANGE. | 1,500 | ADDITIVE ALTERNATE 2 |
| 7 | PONTOON INTERIOR (BELOW MAIN WALK) | 2 | PUMP WATER OUT OF PONTOON INTERIOR PRIOR TO APPLICATION. IF INTERIOR IS UNABLE TO BE PUMPED COMPLETELY DRY, USE UNDERWATER ZONE COATING FOR AREAS WHICH REMAIN WET. UNLESS NOTED OTHERWISE, COATED WORK INCLUDES ALL STEEL MATERIAL (I.E. SIDE SHELL, PLATFORM, LADDERS, RAILS, ETC.) | 7,500 | ADDITIVE ALTERNATE 3 |

NOTES:

- SEE TRANSFER BRIDGE ELEVATION FOR APPROXIMATE EXTENTS OF EACH ITEM NO. LISTED IN THE ABOVE COATING SCHEDULE.
- CONTRACTOR SHALL ERECT CONTAINMENT AROUND AREA WHERE DEBRIS WILL BE REMOVED DURING SURFACE PREPARATION. CONTAINMENT SHALL CAPTURE ALL DEBRIS REMOVED FROM THE STEEL STRUCTURES DURING CLEANING AND COATING OPERATIONS. CONTAINMENT STRUCTURE SHALL MEET ALL PROJECT PERMITTING REQUIREMENTS. CONTAINMENT STRUCTURE SHALL NOT IMPEDE ON TOP SIDE OWNER OPERATIONS OF LOADING/UNLOADING TRAIN CARS. SUBMIT CONTAINMENT STRUCTURE DETAILS FOR ENGINEER REVIEW AND APPROVAL PRIOR TO MOBILIZING.
- SEE TECHNICAL SPECIFICATIONS FOR COATING APPLICATION REQUIREMENTS.
- ESTIMATED SURFACE AREAS ARE PROVIDED FOR REFERENCE ONLY. ACTUAL QUANTITIES MAY VARY. IT IS THE CONTRACTORS RESPONSIBILITY TO VERIFY ACTUAL SURFACE AREA VALUES AND WASTE PRIOR TO BIDDING PROJECT.

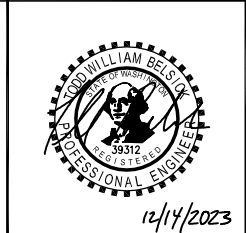
12/14/23 \\PND\SERVER1\Projects\2020\201122 ARRC Term Marine Engineering\06.1 2022 Capital Improv SEA P15.5\C. Drawings\Issued for Construction\201122.06.1-02.dwg



3240 Eastlake Avenue E.
Seattle, Washington 98102
P: 206.624.1387
www.pndengineers.com

ALASKA RAILROAD CORPORATION

PND ENGINEERS, INC. IS NOT RESPONSIBLE FOR SAFETY PROGRAMS, METHODS OR PROCEDURES OF OPERATION, OR THE CONSTRUCTION OF THE DESIGN SHOWN ON THESE DRAWINGS. WHERE SPECIFICATIONS ARE GENERAL OR NOT CALLED OUT, THE SPECIFICATIONS SHALL CONFORM TO STANDARDS OF INDUSTRY. DRAWINGS ARE FOR USE ON THIS PROJECT ONLY AND ARE NOT INTENDED FOR REUSE WITHOUT WRITTEN APPROVAL FROM PND. DRAWINGS ARE ALSO NOT TO BE USED IN ANY MANNER THAT WOULD CONSTITUTE A DETRIMENT DIRECTLY OR INDIRECTLY TO PND.



| REVISIONS | | |
|-----------|------|-------------|
| REV | DATE | DESCRIPTION |
| | | |
| | | |
| | | |
| | | |
| | | |
| | | |
| | | |
| | | |
| | | |
| | | |

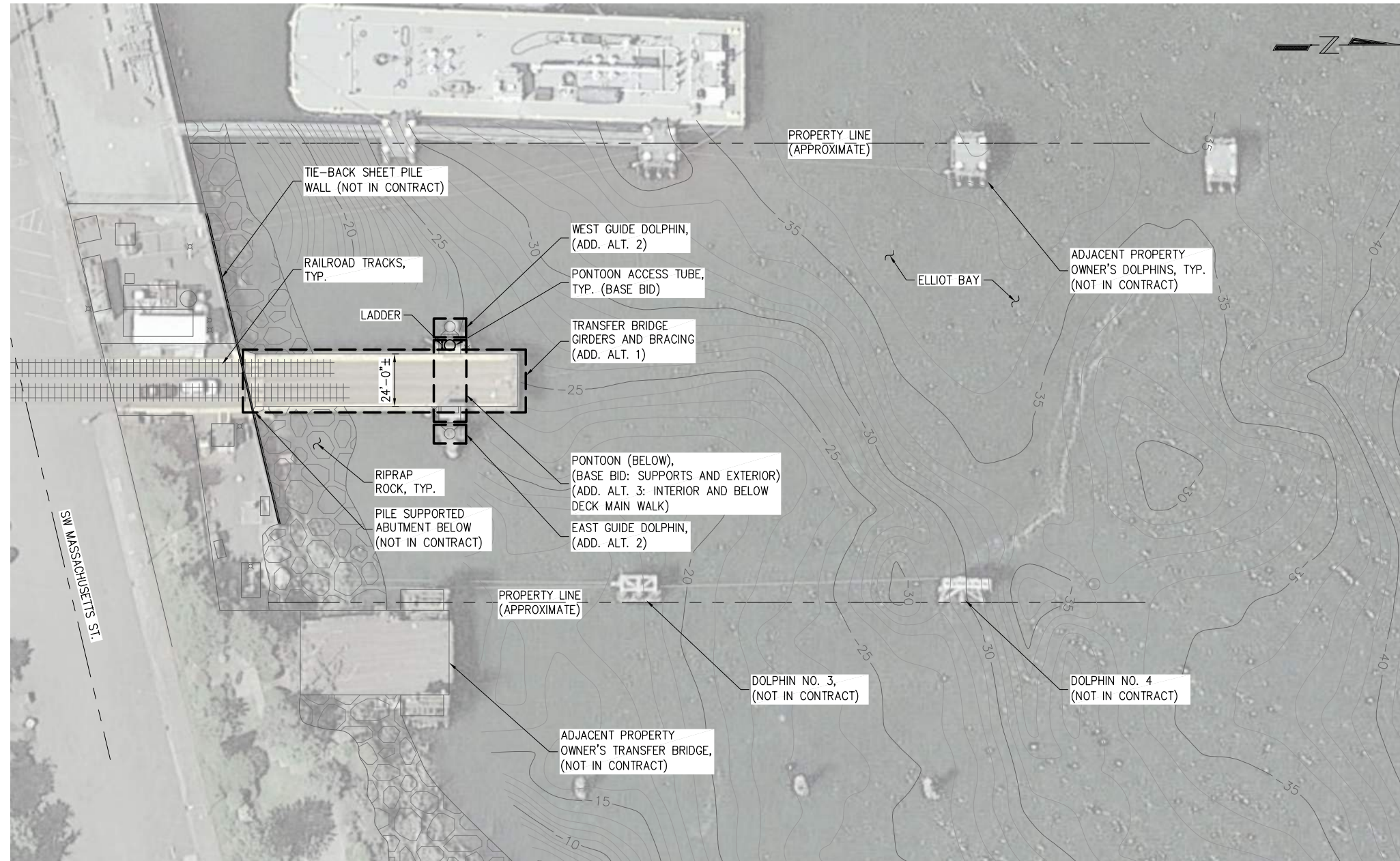
ISSUED FOR CONSTRUCTION

AKRR PIER 15.5 COATINGS SEATTLE, WA

GENERAL NOTES

| | | | | | |
|--------------|-----|-------------|-------------------|-----------|---------------|
| DESIGNED BY: | BKP | PROJECT NO: | 201122.06.1 | SHEET NO: | 2 OF 6 |
| DRAWN BY: | GD | DATE: | DECEMBER 14, 2023 | | |
| CHECKED BY: | | SCALE: | NOTED | | |

12/14/23 \\PND\SERVER1\Projects\2020\201122 Capital Improv SEA P15.5\G. Drawings\Issued for Construction\201122.06.1-03.dwg



NOTE:
MUDLINE CONTOUR LINES ARE APPROXIMATE AND SHOWN FOR REFERENCE ONLY. DATUM=MLLW.

SITE PLAN



3240 Eastlake Avenue E.
Seattle, Washington 98102
P: 206.624.1387
www.pndengineers.com

ALASKA RAILROAD CORPORATION

PND ENGINEERS, INC. IS NOT RESPONSIBLE FOR SAFETY PROGRAMS, METHODS OR PROCEDURES OF OPERATION, OR THE CONSTRUCTION OF THE DESIGN SHOWN ON THESE DRAWINGS. WHERE SPECIFICATIONS ARE GENERAL OR NOT CALLED OUT, THE SPECIFICATIONS SHALL CONFORM TO STANDARDS OF INDUSTRY. DRAWINGS ARE FOR USE ON THIS PROJECT ONLY AND ARE NOT INTENDED FOR REUSE WITHOUT WRITTEN APPROVAL FROM PND. DRAWINGS ARE ALSO NOT TO BE USED IN ANY MANNER THAT WOULD CONSTITUTE A DETRIMENT DIRECTLY OR INDIRECTLY TO PND.

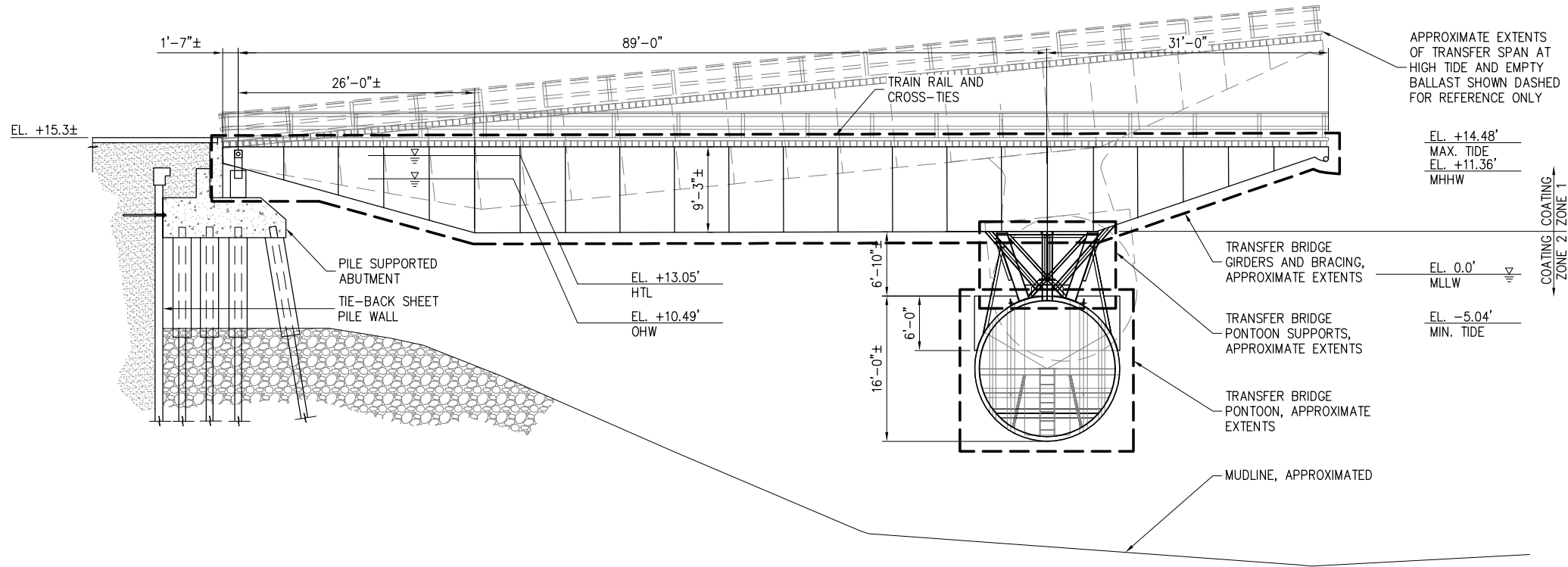


12/14/2023

| REVISIONS | | |
|-----------|------|-------------|
| REV | DATE | DESCRIPTION |
| | | |
| | | |
| | | |
| | | |
| | | |
| | | |
| | | |
| | | |
| | | |
| | | |

| | | | |
|--|-----|-------------|-------------------|
| ISSUED FOR CONSTRUCTION | | | |
| AKRR PIER 15.5 COATINGS SEATTLE, WA | | | |
| SITE PLAN | | | |
| DESIGNED BY: | BKP | PROJECT NO: | 201122.06.1 |
| DRAWN BY: | GD | DATE: | DECEMBER 14, 2023 |
| CHECKED BY: | | SCALE: | NOTED |
| SHEET NO: | | | 3 OF 6 |

12/14/23 \\PND\SERVER1\Projects\2020\201122_ARRC_Term Marine Engineering\06.1 2022 Capital Improv SEA P15.5\G. Drawings\Issued for Construction\201122.06.1-04.dwg



ELEVATION

PONTOON ACCESS TUBES NOT SHOWN FOR CLARITY, SEE NEXT SHEET FOR DETAILS ELEVATION VIEW SHOWN IN APPROXIMATE AND SHOWN FOR REFERENCE ONLY.

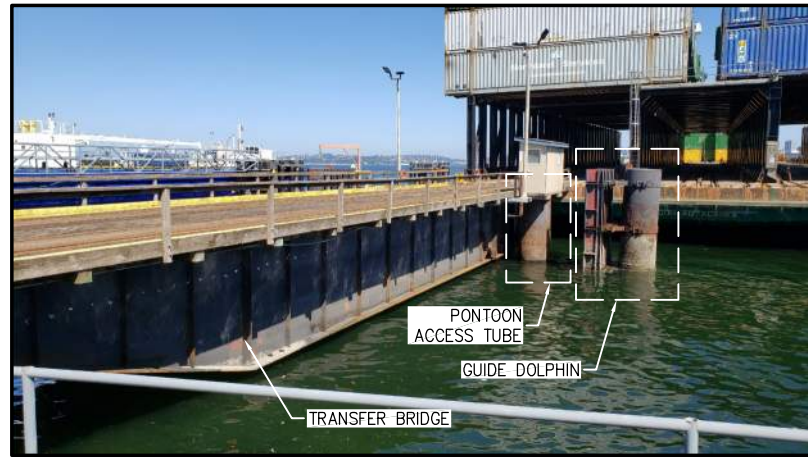


PHOTO 1

TRANSFER BRIDGE FROM SHORE SIDE

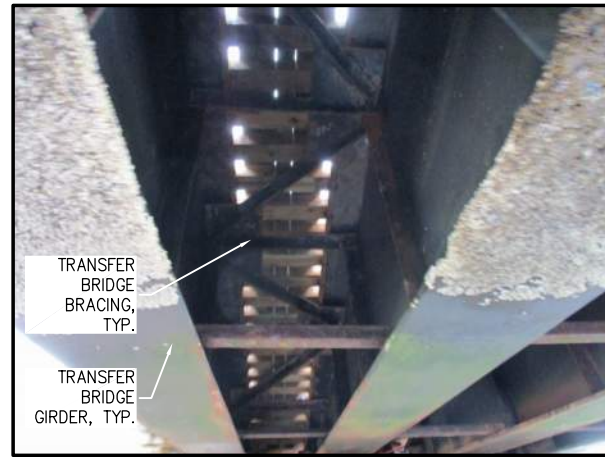


PHOTO 2

TRANSFER BRIDGE FROM BELOW



PHOTO 3

TRANSFER BRIDGE PONTOON SUPPORTS FROM BELOW

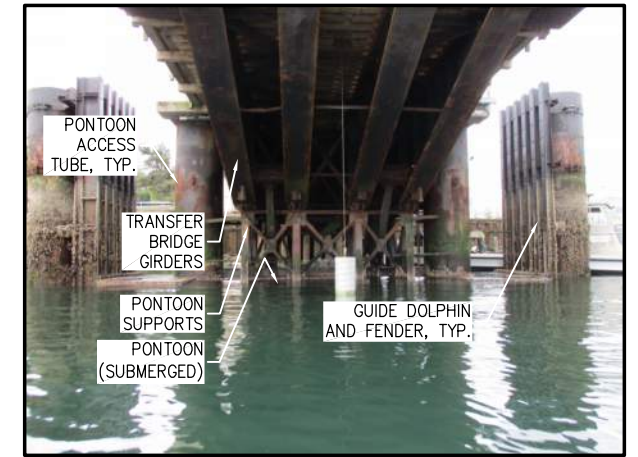


PHOTO 4

TRANSFER BRIDGE AND PONTOON SUPPORTS FROM BELOW



3240 Eastlake Avenue E.
Seattle, Washington 98102
P: 206.624.1387
www.pndengineers.com

ALASKA RAILROAD CORPORATION

PND ENGINEERS, INC. IS NOT RESPONSIBLE FOR SAFETY PROGRAMS, METHODS OR PROCEDURES OF OPERATION, OR THE CONSTRUCTION OF THE DESIGN SHOWN ON THESE DRAWINGS. WHERE SPECIFICATIONS ARE GENERAL OR NOT CALLED OUT, THE SPECIFICATIONS SHALL CONFORM TO STANDARDS OF INDUSTRY. DRAWINGS ARE FOR USE ON THIS PROJECT ONLY AND ARE NOT INTENDED FOR REUSE WITHOUT WRITTEN APPROVAL FROM PND. DRAWINGS ARE ALSO NOT TO BE USED IN ANY MANNER THAT WOULD CONSTITUTE A DETRIMENT DIRECTLY OR INDIRECTLY TO PND.

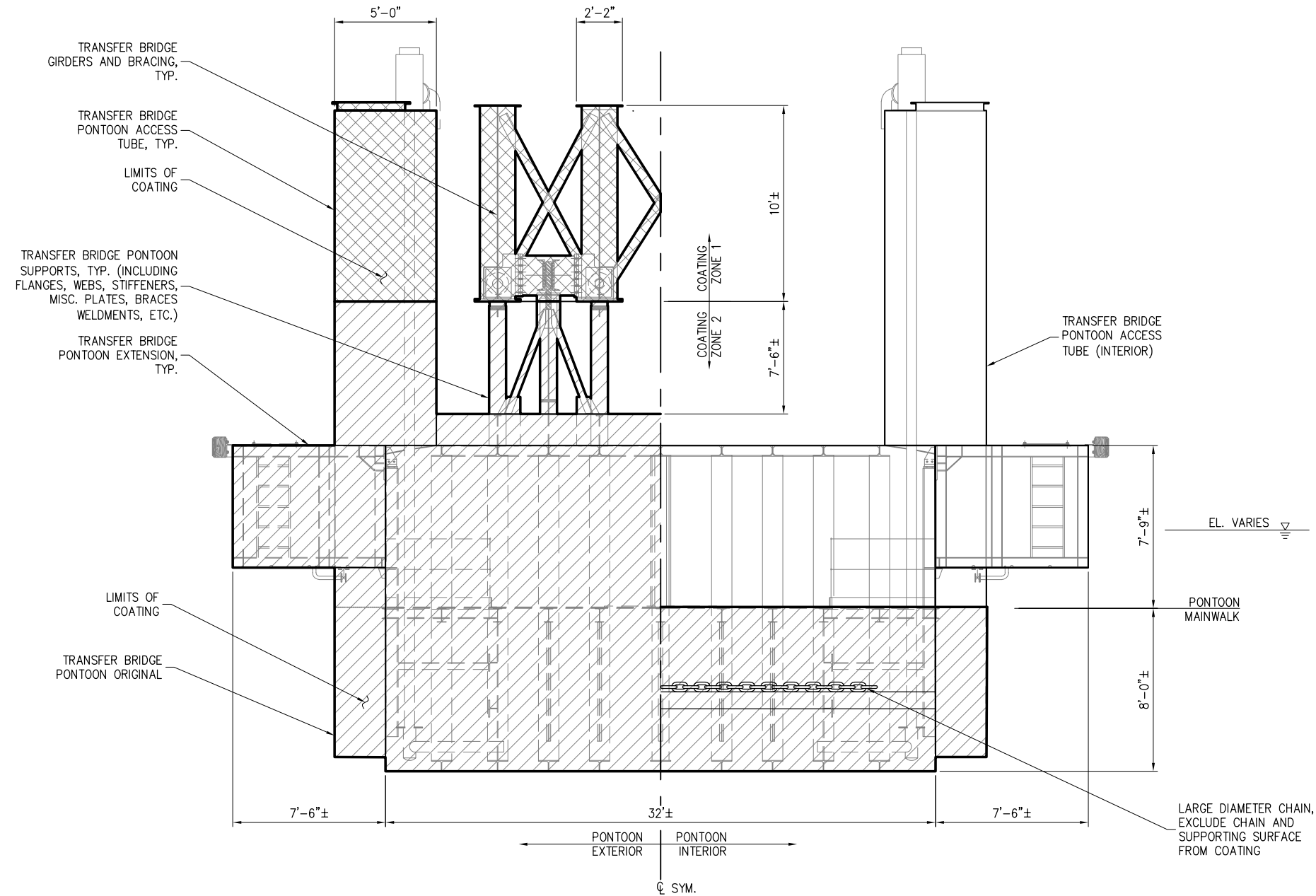


12/14/2023

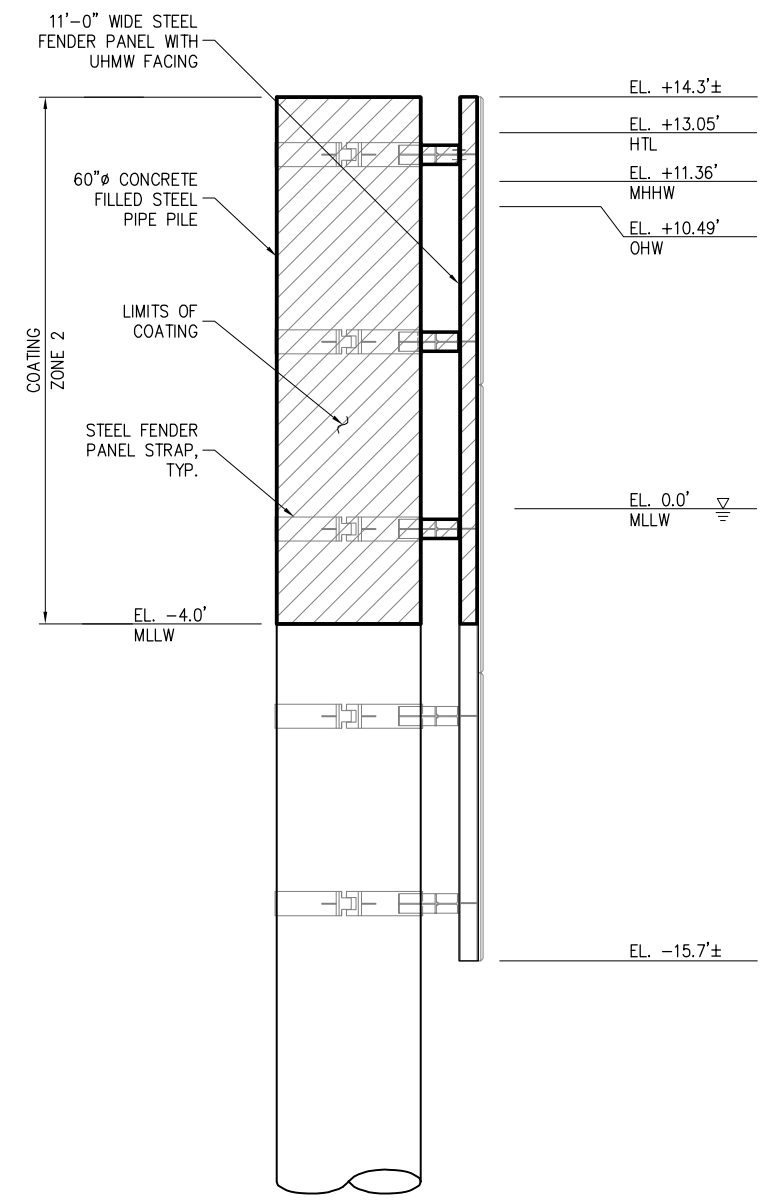
| REVISIONS | | |
|-----------|------|-------------|
| REV | DATE | DESCRIPTION |
| | | |
| | | |
| | | |
| | | |
| | | |
| | | |
| | | |
| | | |
| | | |
| | | |

| | | | |
|--|-----|-------------|----------------------------|
| ISSUED FOR CONSTRUCTION | | | |
| AKRR PIER 15.5 COATINGS SEATTLE, WA | | | |
| PROJECT: | | | |
| TITLE: BRIDGE ELEVATION AND PHOTOS 1 OF 2 | | | |
| DESIGNED BY: | BKP | PROJECT NO: | 201122.06.1 |
| DRAWN BY: | GD | DATE: | DECEMBER 14, 2023 |
| CHECKED BY: | | SCALE: | NOTED |
| | | | SHEET NO: 4 OF 6 |

12/14/23 \\PND\SERVER1\Projects\2020\201122 ARRC Term Marine Engineering\06.1 2022 Capital Improv SEA P15.5\C. Drawings\Issued for Construction\201122.06.1-06.dwg



SECTION AT PONTOON FACING NORTH



GUIDE DOLPHIN SIDE ELEVATION

P N D
ENGINEERS, INC.
3240 Eastlake Avenue E.
Seattle, Washington 98102
P: 206.624.1387
www.pndengineers.com

ALASKA RAILROAD CORPORATION

PND ENGINEERS, INC. IS NOT RESPONSIBLE FOR SAFETY PROGRAMS, METHODS OR PROCEDURES OF OPERATION, OR THE CONSTRUCTION OF THE DESIGN SHOWN ON THESE DRAWINGS. WHERE SPECIFICATIONS ARE GENERAL OR NOT CALLED OUT, THE SPECIFICATIONS SHALL CONFORM TO STANDARDS OF INDUSTRY. DRAWINGS ARE FOR USE ON THIS PROJECT ONLY AND ARE NOT INTENDED FOR REUSE WITHOUT WRITTEN APPROVAL FROM PND. DRAWINGS ARE ALSO NOT TO BE USED IN ANY MANNER THAT WOULD CONSTITUTE A DETRIMENT DIRECTLY OR INDIRECTLY TO PND.



| REVISIONS | | |
|-----------|------|-------------|
| REV | DATE | DESCRIPTION |
| | | |
| | | |
| | | |
| | | |
| | | |
| | | |
| | | |
| | | |
| | | |

ISSUED FOR CONSTRUCTION

AKRR PIER 15.5 COATINGS SEATTLE, WA

TITLE: PONTOON SECTION AND GUIDE DOLPHIN

| | | |
|------------------|-------------------------|---------------|
| DESIGNED BY: BKP | PROJECT NO: 201122.06.1 | SHEET NO: |
| DRAWN BY: GD | DATE: DECEMBER 14, 2023 | 6 OF 6 |
| CHECKED BY: | SCALE: NOTED | |