

Bridge 64.7 Rehabilitation

Project Description

The Alaska Railroad Corporation (ARRC) will rehabilitate the 490-foot open deck steel deck-truss bridge crossing Twentymile River at ARRC MP 64.7 near Portage. Seven piers will have a new concrete encasement. Diagonal steel members will have rivets replaced with high strength bolts and reinforcement plates added throughout. Both abutments and seven piers will have new grout pads and bearing keepers installed.

Purpose & Need

The circa 1951 steel superstructures are approaching then end of their useful lives. Due to modern day loads, inspections have identified fatigue related defects indicating a need for rehabilitation to extend the useful life of the bridge. The concrete piers and steel bearings will also be rehabilitated as part of this project to allow for continued safe passage of trains. This effort will help ensure railroad infrastructure remains in a state of good repair. The integrity of bridge infrastructure ensures

the safety and reliability of rail operations. General bridge rehabilitation benefits are outlined in the current Bridge Program fact sheet.

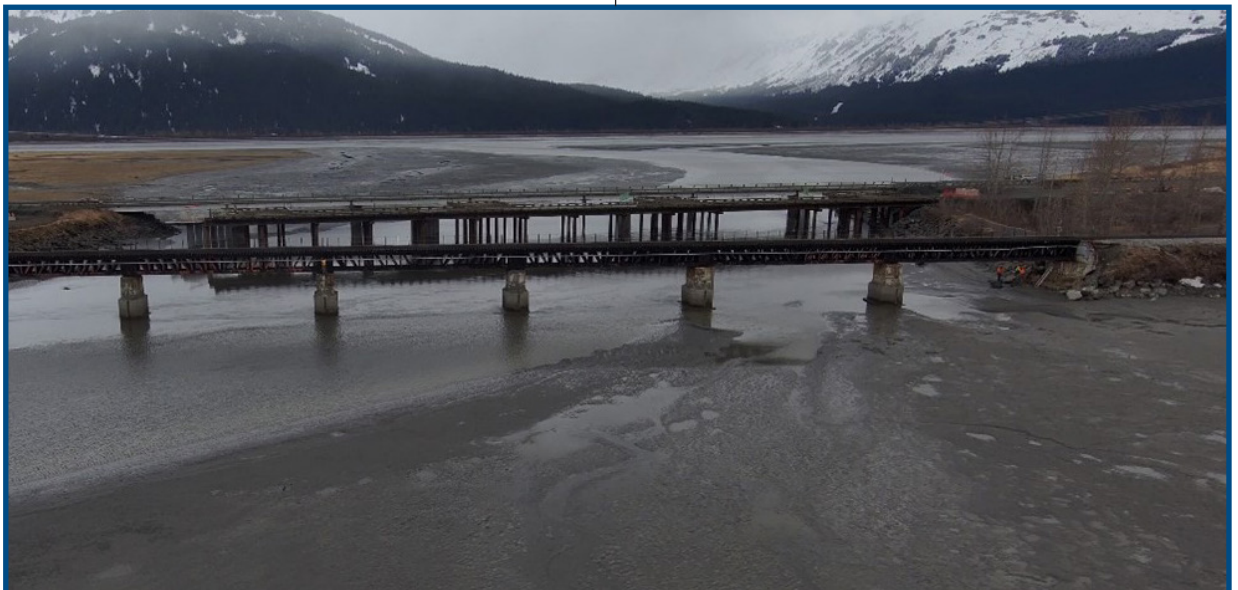
Benefits

A rehabilitated bridge structure will:

- Improve operational efficiency.
- Eliminate the potential need for trains to slow speeds while crossing the bridge.
- Reduce the likelihood of a bridge failure and associated service interruption.

Status

- Preliminary engineering, studies and environmental reviews and permitting were completed in mid-2023.
- Final design was completed at the end of 2023, and the project was issued for bid and awarded to Swalling General Contractors.
- Construction began in 2024 and will continue into 2025.



Bridge 64.7 crosses Twentymile River at MP 64.7 near Portage.

- Project completion is estimated by mid-2025.

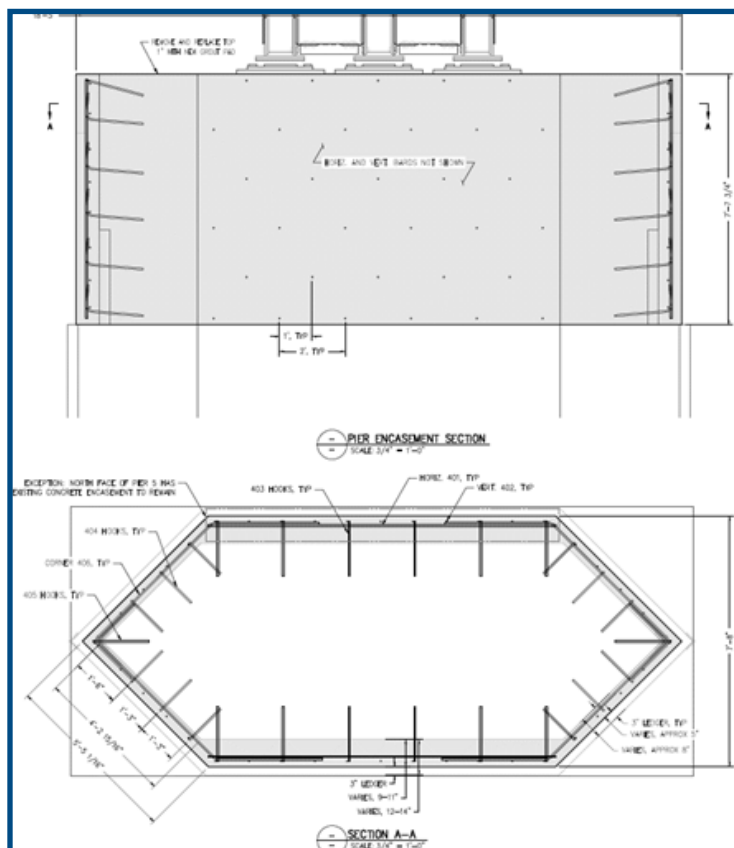
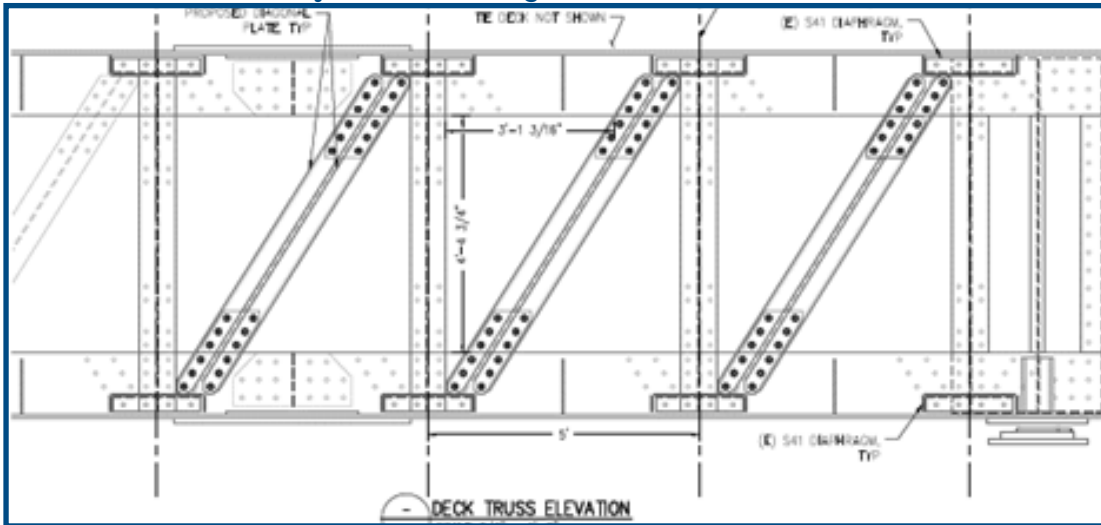
Cost and Funding

The project budget is \$4.2 million. Funding is 100% by Federal Transit Administration (FTA) CARES act funds.

More Information

For more information or comment, email the Alaska Railroad at Public_Comment@akrr.com. The ARRC Bridge Program fact sheet is available online at AlaskaRailroad.com > Corporate > Projects (look under *Systemwide Projects*).

Project Area - Bridge MP 64.7 - Side View



Bridge crosses Twentymile River at MP 64.7.

Project Area - Bridge MP 64.7
Pier Concrete Encasement