

Bridge 152.3 Replacement

Project Description

The Alaska Railroad Corporation (ARRC) is currently planning to replace the bridge at ARRC MP 152.3 crossing a tributary of Spring Creek, which is located in the Matanuska-Susitna Borough, Alaska south of the Glenn/Parks Highway interchange. The current bridge is a 30-foot-long span timber bridge comprised of two (2), 14-foot timber superstructures spanning over three (3) timber pile substructures consisting of five (5) timber piles each, and timber abutments. The project at bridge 152.3 is expected to completely replace the current sub and super structure with new steel bents, new caps, new steel ballast deck spans, new abutments, and new sheet pile bulkheads.

Purpose and Need

The project's activities will update bridge safety and load capacity, enhance the stability of the track infrastructure, and extend the useful life of the bridge.

This effort will help ensure railroad infrastructure remains in a state of good repair. The integrity of bridge infrastructure ensures the safety and

reliability of rail operations to meet business demands.

Status

- Preliminary Engineering, Environmental review and permitting is underway.
- Upon National Environmental Policy Act (NEPA) approval, final design and permitting will be completed; then ARRC will solicit a construction contractor to complete the work.
- Construction is anticipated to begin in fall 2026.
- Project completion is expected by late 2026.

Cost and Funding

The project budget is approximately \$2.7 million. The project is expected to be funded by a Federal Transit Administration (FTA) grant with a 20% match by ARRC.

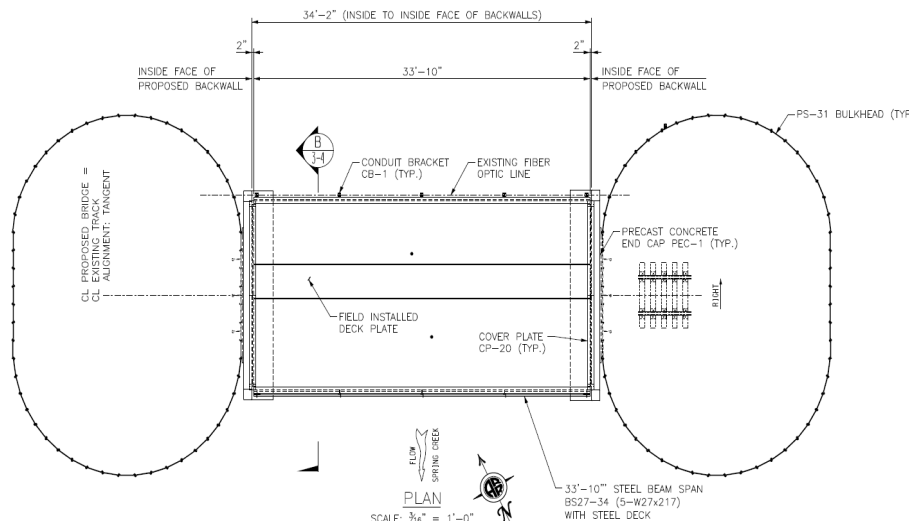
More Information

For more project information, email the Alaska Railroad at Public_Comment@akrr.com. The ARRC Bridge Program fact sheet is available online at AlaskaRailroad.com > Corporate > Projects (look under Systemwide Projects).

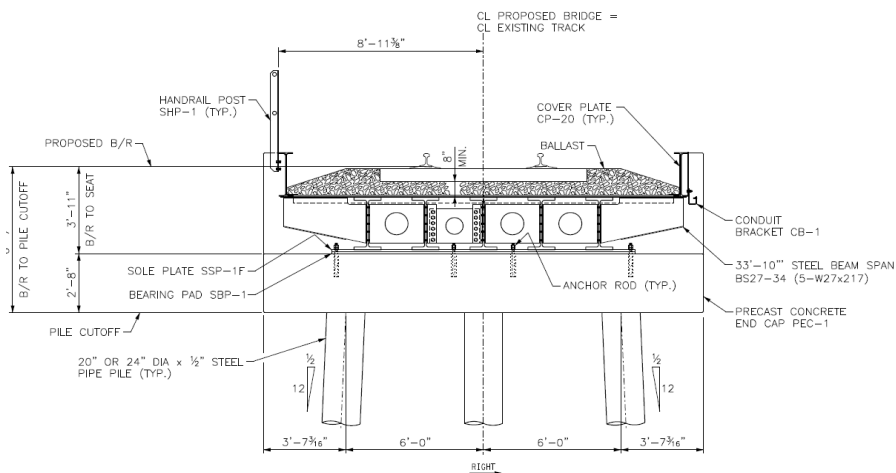
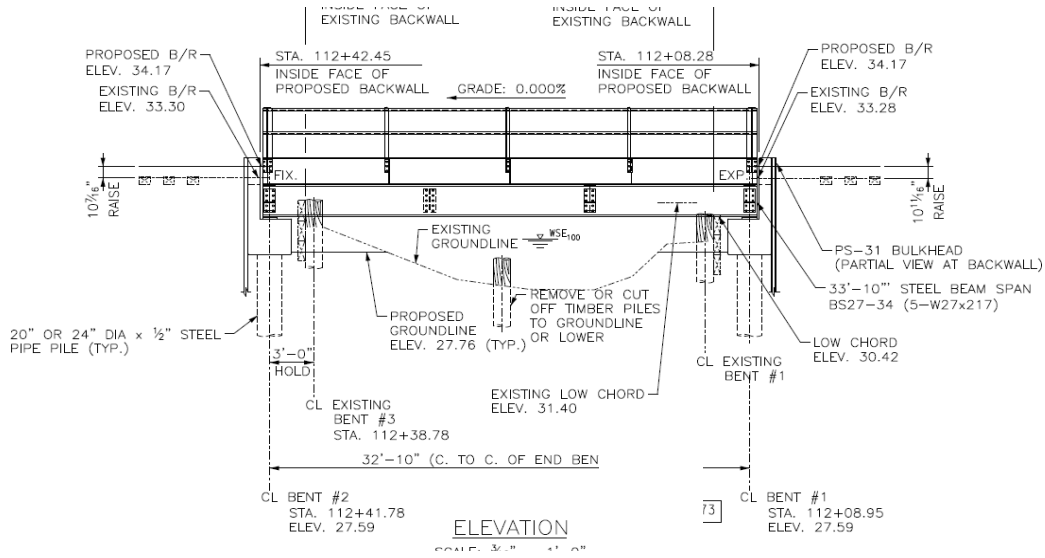


Bridge 152.3 crosses a tributary of Spring Creek south of Wasilla.

Project Area - Bridge MP 152.3, Top View



Project Area - Bridge MP 152.3, Side View



Project Area - Bridge MP 152.3, Cross Section