

Bridge 190.5 Replacement

Project Description

The Alaska Railroad Corporation (ARRC) will replace the single-span 80-foot deck girder bridge that crosses Little Willow Creek at ARRC milepost 190.5, just north of Willow, Alaska. The project will replace the aging structure with a new 125-foot single-span through-plate girder bridge, abutments, and design elements that better withstand the dynamic forces of the waterway. The new bridge will be longer, more stable, and designed to meet current and projected freight and intercity passenger train specifications.

Purpose and Need

The bridge at MP 190.5 was built in 1926 and is nearing the end of its useful life. The bridge supports essential freight and intercity passenger services that carry residents, workers, and visitors, year-round between Anchorage and Fairbanks. The concrete abutments supporting the steel deck girder are deteriorating and rotating inward toward the creek, thus causing the superstructure to be pinned between the abutments. Scouring adjacent to the abutments is furthering the loss of foundation

support. Bridge replacement will help ensure railroad infrastructure remains in a state of good repair. The integrity of critical rail corridor infrastructure ensures the safety and reliability of passenger and freight train operations to meet rail business demands.

Status

- Preliminary engineering, studies, environmental reviews and permitting began in 2020.
- Environmental documentation and permitting were completed in 2021.
- Design is anticipated to be completed in 2027.
- Construction is tentatively scheduled for 2028.

Cost and Funding

The project budget is approximately \$10.6 million. Funding is planned 80% by the Federal Railroad Administration (FRA) and 20% matching funds by ARRC. The 80% FRA funds are available from FY 2023 Federal-State Partnership for Intercity Passenger Rail Grant.

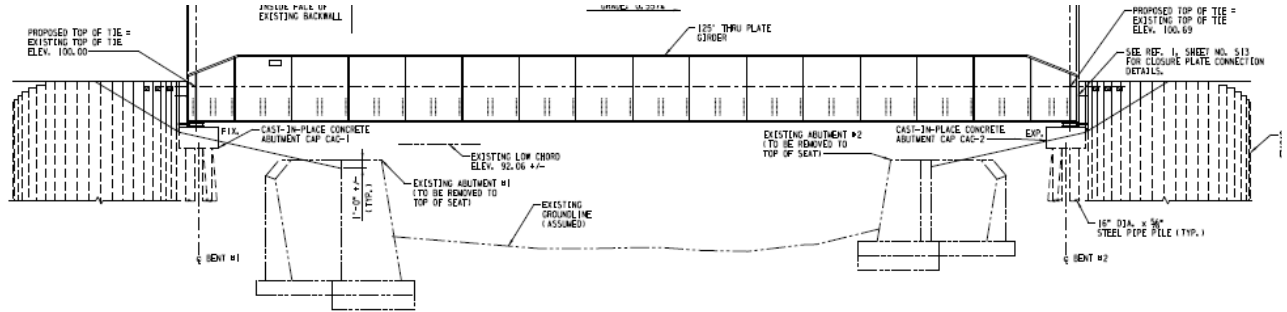


Bridge 190.5 crosses Little Willow Creek just north of Willow.

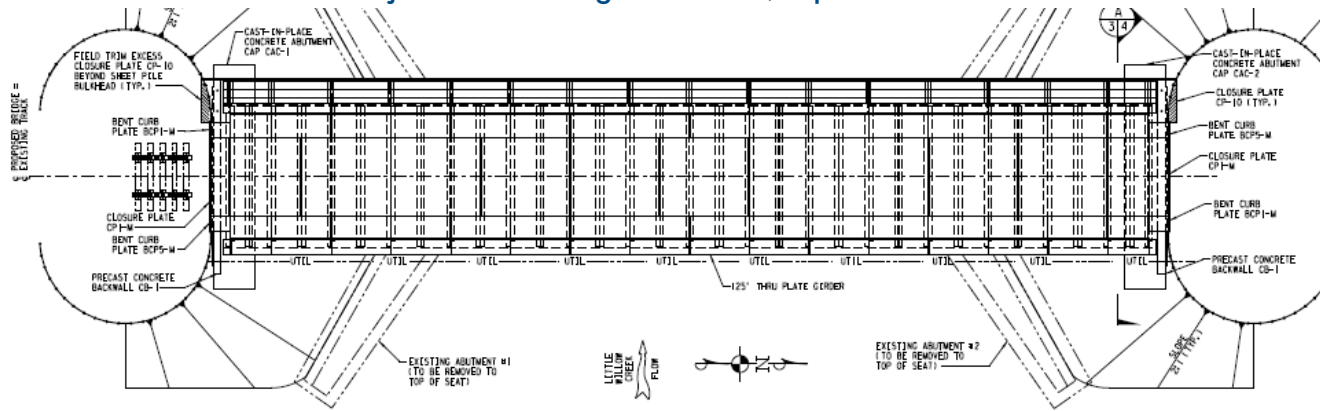
More Information

For more project information, email the Alaska Railroad at Public_Comment@akrr.com. The ARRC Bridge Program fact sheet is available online at AlaskaRailroad.com > Corporate > Projects (look under Systemwide Projects).

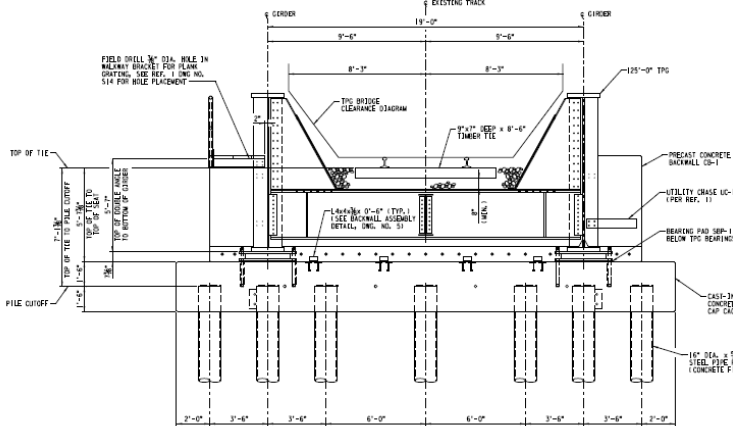
Project Area - Bridge MP 190.5, Side View



Project Area - Bridge MP 190.5, Top View



Project Area - Bridge MP 190.5, Abutment Cross Section



Left: a project drawing shows greater detail on replacing the abutments. Project work will include full replacement of the existing bridge.

Right: the photo focuses on the south-end abutment, on the east side of the bridge.