

ALASKA

RAILROAD

YOUR TICKET

TO INDUSTRIAL LAND
in the Ship Creek Development District

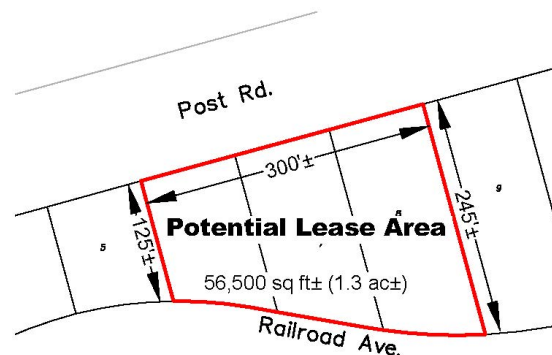
1532 N. Post Road

Available Immediately

907.265.2325

Site Details

- Zoned I-2
- Excellent Downtown location
- Long term ground lease available
- Water and Sewer Available to site



QUESTIONS?

Kellyan Taylor
907.265.2325 or
taylork@akrr.com