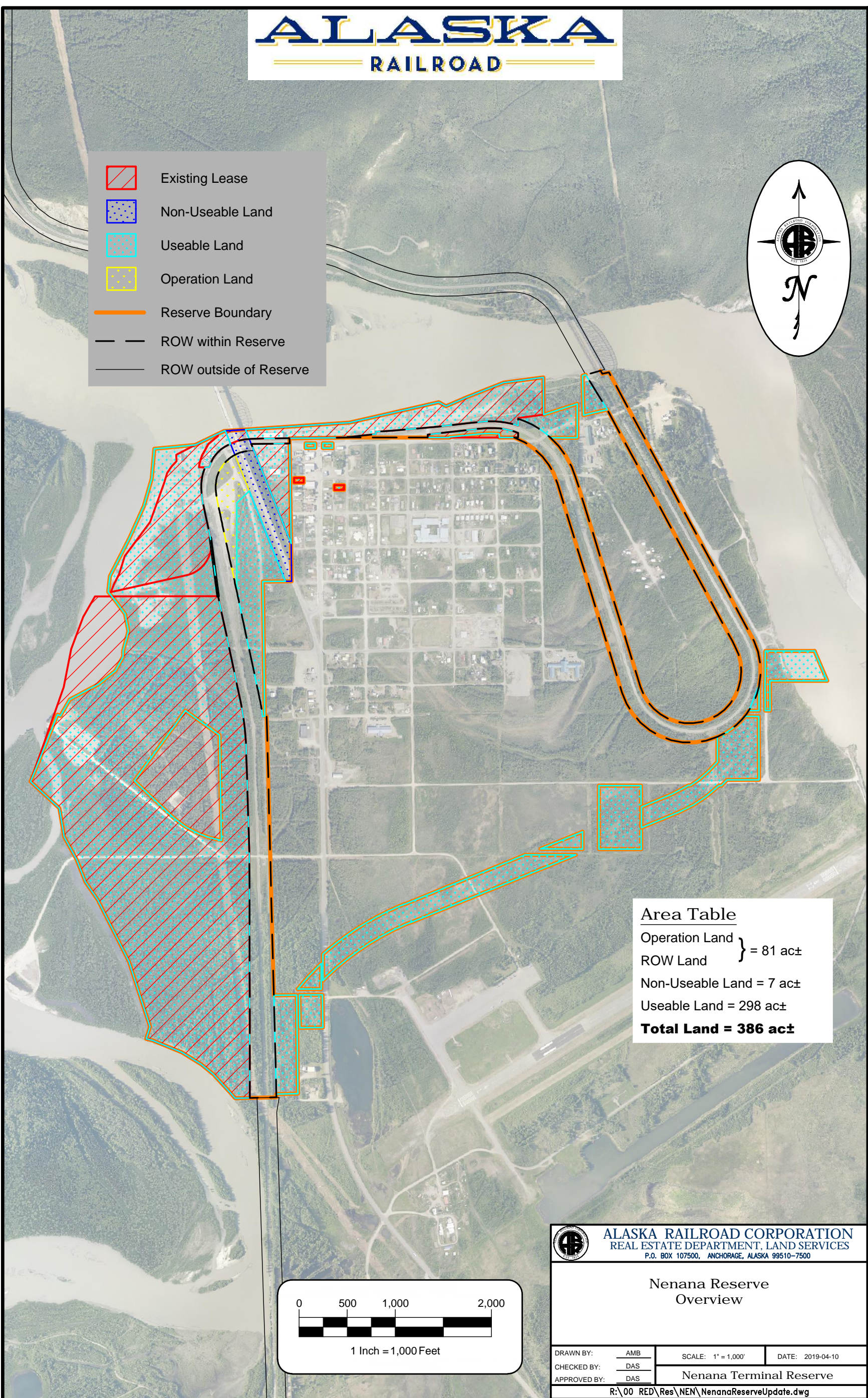


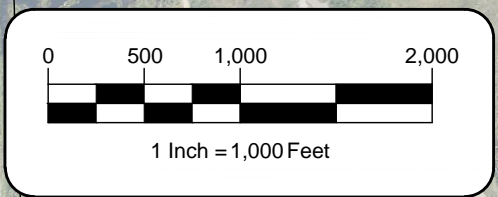
ALASKA RAILROAD


-  Existing Lease
-  Non-Useable Land
-  Useable Land
-  Operation Land
-  Reserve Boundary
-  ROW within Reserve
-  ROW outside of Reserve



Area Table

Operation Land	} = 81 ac±
ROW Land	
Non-Useable Land	= 7 ac±
Useable Land	= 298 ac±
Total Land	= 386 ac±



 ALASKA RAILROAD CORPORATION REAL ESTATE DEPARTMENT, LAND SERVICES <small>P.O. BOX 107500, ANCHORAGE, ALASKA 99510-7500</small>		
Nenana Reserve Overview		
DRAWN BY: <u>AMB</u> CHECKED BY: <u>DAS</u> APPROVED BY: <u>DAS</u>	SCALE: 1" = 1,000' Nenana Terminal Reserve	DATE: 2019-04-10
<small>R:\00 RED\Res\NEN\NenanaReserveUpdate.dwg</small>		