

DEMOLITION NOTES

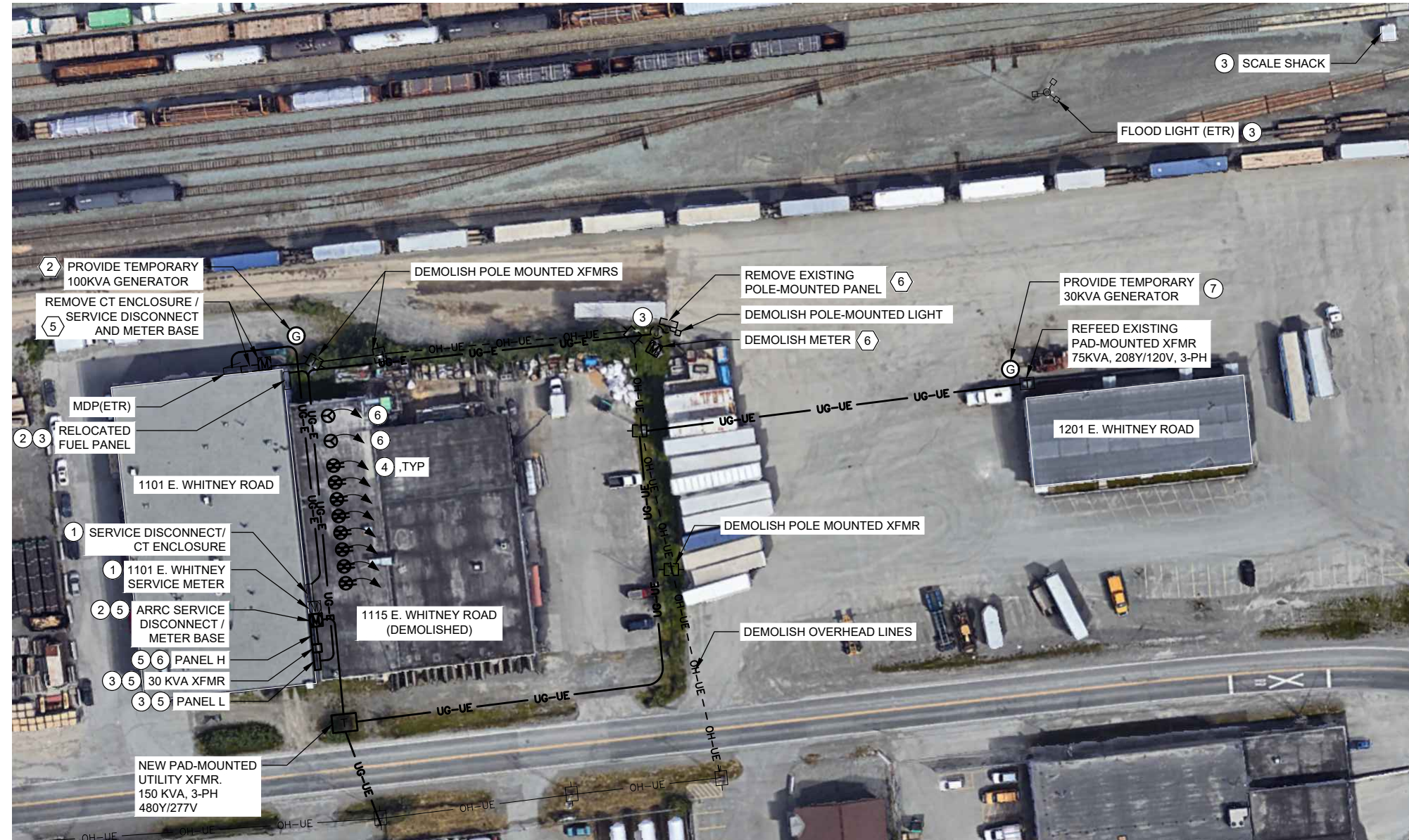
- COORDINATE ELECTRICAL UTILITY SERVICE DEMOLITION WORK WITH UTILITIES. SEE CEA REFERENCE DRAWINGS.
- PROVIDE TEMPORARY 100KVA 480Y/277V, THREE PHASE GENERATOR. DISCONNECT SERVICE FEEDERS FROM MDP AND CONNECT GENERATOR TO PROVIDE TEMPORARY POWER.
- DEMOLISH OVERHEAD ELECTRICAL SERVICE LINES AND UTILITY POLES.
- DEMOLISH POLE-MOUNTED TRANSFORMERS AND RETURN TO UTILITY.
- REMOVE SERVICE DISCONNECT AND METER FOR RELOCATION AND REINSTALLATION IN NEW LOCATION. SEE SHEET NOTE 1.
- DEMOLISH SERVICE METER AND RETURN TO UTILITY. REMOVE FUEL PANEL FOR RELOCATION AND REINSTALLATION.

SHEET NOTES

- RELOCATE EXISTING SERVICE DISCONNECT AND METER TO SOUTHEAST EXTERIOR OF BUILDING. CEA TO INSTALL CONDUCTORS AND CONDUITS FROM TRANSFORMER TO METER AND DISCONNECT AT NEW LOCATION. COORDINATE WITH CEA.
- PROVIDE NEW 200A SERVICE METER FOR NEW HEADBOLT HEATER OUTLETS AND EXISTING SCALE SHACK, FLOOD LIGHT, AND FUEL PANEL. MOUNT TO EAST WALL OF 1101 E. WHITNEY RD.
- PROVIDE 30 KVA TRANSFORMER TO STEP DOWN SERVICE VOLTAGE FROM 480Y/277V TO 208Y/120V. RELOCATE EXISTING FUEL PANEL TO RACK ADJACENT TO 1101 E. WHITNEY BUILDING EXTERIOR WALL. REFEED EXISTING FUEL PANEL, SCALE SHACK AND FLOOD LIGHT CIRCUITS FROM NEW PANEL L. PROVIDE IN GRADE JUNCTION BOX TO FEED EXISTING SCALE SHACK AND FLOOD LIGHT CIRCUIT.
- PROVIDE HEADBOLT HEATER OUTLETS AND FEED UNDERGROUND FROM PANEL L WITH 2-#10 AWG, #10 GND CONDUCTORS IN 3/4" RSC. MOUNT TO 4" X 4" PRESSURE TREATED, 8 FT WOOD POST BURIED TO A DEPTH OF 4 FT. SPACE POSTS 10 FT APART ON CENTER AND 10 FT FROM EAST WALL OF 1101. E WHITNEY RD. PROVIDE 6" BEDDING BELOW POST.
- MOUNT METER BASE, ARRC SERVICE DISCONNECT, PANEL H, PANEL L AND 30 KVA TRANSFORMER TO SOUTHEAST EXTERIOR OF 1101 E. WHITNEY BUILDING.
- PROVIDE 480 VAC, 4 POLE, 5 WIRE, TWIST LOCK RECEPTACLE, TOTAL OF 2. PROVIDE MATCHING PLUG TO ARRC. FEED UNDERGROUND FROM PANEL H. MOUNT TO 4" X 6" PRESSURE TREATED, 8 FT WOOD POST BURIED TO A DEPTH OF 4 FT. SPACE POSTS 15 FT APART ON CENTER AND 10 FT FROM EAST WALL OF 1101. E WHITNEY RD. SPACE 15 FT APART ON CENTER FROM LAST HEADBOLT HEATER POST. PROVIDE 6" BEDDING BELOW POST.
- PROVIDE TEMPORARY 30KVA 208Y/120V, THREE PHASE GENERATOR. SEE SHEET E100 FOR DETAILS.

GENERAL SPECIFICATIONS

- ALL WORK SHALL CONFORM TO THE MOST RECENTLY ADOPTED EDITION OF THE MUNICIPALITY OF ANCHORAGE STANDARD SPECIFICATIONS (M.A.S.S.) TITLE 21, CHUGACH (CEA) ELECTRICAL SERVICE REQUIREMENTS AND THE PROJECT MANAGEMENT AND ENGINEERING DEPARTMENT DESIGN CRITERIA MANUAL (DCM) UNLESS OTHERWISE NOTED.
- ALL RACEWAY SHALL BE GALVANIZED RIGID METAL CONDUIT (RSC) PER SECTION 80.07, UNLESS OTHERWISE NOTED.
- PROVIDE COPPER CONDUCTORS.

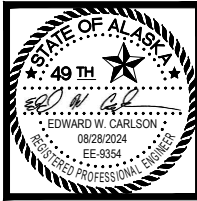


1 ELECTRICAL SITE PLAN
E001 1" = 40'-0"

LEGEND		
ABBR.	EXPLANATION	SYMBOL
XFMR	TRANSFORMER, PAD-MOUNTED	[Symbol]
T	TRANSFORMER, POLE-MOUNTED	[Symbol]
NTS	NOT TO SCALE	
CKT	CIRCUIT - NUMBER AS NOTED (TYP.)	CKT-XX
ETR	EXISTING TO REMAIN	
AC	ABOVE COUNTER	
BC	BELOW COUNTER	
WP	WEATHERPROOF	
E	EMERGENCY LIGHT, CIRCUIT, PANEL	
AFCI	ARC FAULT CIRCUIT INTERRUPTER	
C	CONDUIT, CONCEALED. SIZE AS NOTED (TYP.)	[Symbol]
	CONDUIT, UNDERGROUND OR UNDERFLOOR	[Symbol]
↓	CONDUIT, EXPOSED	[Symbol]
FLEX	CONDUIT, FLEXIBLE	[Symbol]
	MULTI-OUTLET ASSEMBLY-RECEPTACLES AS INDICATED	[Symbol]
	HOMERUN TO PANEL/CIRCUITS AS NOTED	[Symbol]
#X	NEUTRAL, HOT, GROUND # 12 UON/SPECIFIED	[Symbol]
PNL	PANELBOARD - SEE SCHEDULES	[Symbol]
	REFER TO INDICATED NOTE	[Symbol]
RECPT	TELECOM OUTLET X=NUMBER OF PORTS	[Symbol]
	DUAL PORT TELECOM OUTLET IN FLOOR BOX	[Symbol]
	DUPLEX RECEPTACLE - NEMA 5-20R	[Symbol]
	QUADRUPLX RECEPTACLE - NEMA 5-20R	[Symbol]
	DUPLEX RECEPTACLE - NEMA 5-20R GFCI TYPE	[Symbol]
	DUPLEX RECEPTACLE - WITH USB POWER	[Symbol]
	HARDWIRE CONNECTION	[Symbol]
	QUAD RECEPTACLE IN FLOOR BOX	[Symbol]
	DUPLEX RECEPTACLE IN FLOOR BOX	[Symbol]
	RECEPTACLE - NEMA CONFIGURATION AS NOTED	[Symbol]
	CATV OUTLET	[Symbol]
J-BOX	JUNCTION BOX	[Symbol]
	MOTOR - SIZE AS INDICATED	[Symbol]
	MOTOR CONTROLLER	[Symbol]
	MOTOR DISCONNECT	[Symbol]
	COMBINATION STARTER/DISCONNECT	[Symbol]
	VFD CONTROLLER	[Symbol]
SW	SWITCH - SINGLE POLE	[Symbol]
	SWITCH - TWO POLE	[Symbol]
	SWITCH - THREE WAY	[Symbol]
	SWITCH - FOUR WAY	[Symbol]
	SWITCH - DIMMING TYPE	[Symbol]
	SWITCH - OCCUPANCY SENSOR	[Symbol]
	SWITCH - THERMAL OVERLOAD	[Symbol]
	SWITCH - THREE WAY DIMMER	[Symbol]
	CALL-IN SWITCH	[Symbol]
	SWITCH - WITH TIMER	[Symbol]
	FIRE ALARM HORN/STROBE - CEILING MOUNTED	[Symbol]
	FIRE ALARM HORN/STROBE	[Symbol]
	FIRE ALARM STROBE	[Symbol]
	EMERGENCY SHUT OFF	[Symbol]
	FIRE ALARM MANUAL STATION	[Symbol]
FACP	FIRE ALARM CONTROL PANEL	[Symbol]
FANN	FIRE ALARM REMOTE ANNUNCIATOR	[Symbol]
	FIRE ALARM DOOR HOLDER	[Symbol]
TTB/C	PUSHBUTTON SWITCH	[Symbol]
PC	TELEPHONE TERMINAL BOARD/CABINET	[Symbol]
	PHOTOCELL	[Symbol]
	WIRELESS ACCESS POINT	[Symbol]
	DOOR CONTACT	[Symbol]
	EXIT SIGN	[Symbol]
	BATTERY-POWERED EMERGENCY LIGHT	[Symbol]
	LIGHTING FIXTURES - VARIOUS TYPES AS NOTED	[Symbol]
	OCCUPANCY SENSOR - CEILING MOUNT	[Symbol]
	GROUNDING ELECTRODE	[Symbol]
	GENERATOR	[Symbol]
	UTILITY POLE	[Symbol]

THIS IS A STANDARD LEGEND. ALL SYMBOLS SHOWN ON LEGEND ARE NOT NECESSARILY ON THE DRAWING(S).

VERIFY SCALES: IF THIS LINE 0' 1' 2'
DOES NOT MEASURE 2", ADJUST SCALE ACCORDINGLY.



MBA
Consulting Engineers, Inc.
(907) 274-2622 / FAX (907) 274-0914

ALASKA RAILROAD CORPORATION
NEW 3-PHASE SERVICE LINE
1115 E. WHITNEY ROAD
ANCHORAGE, AK 99501

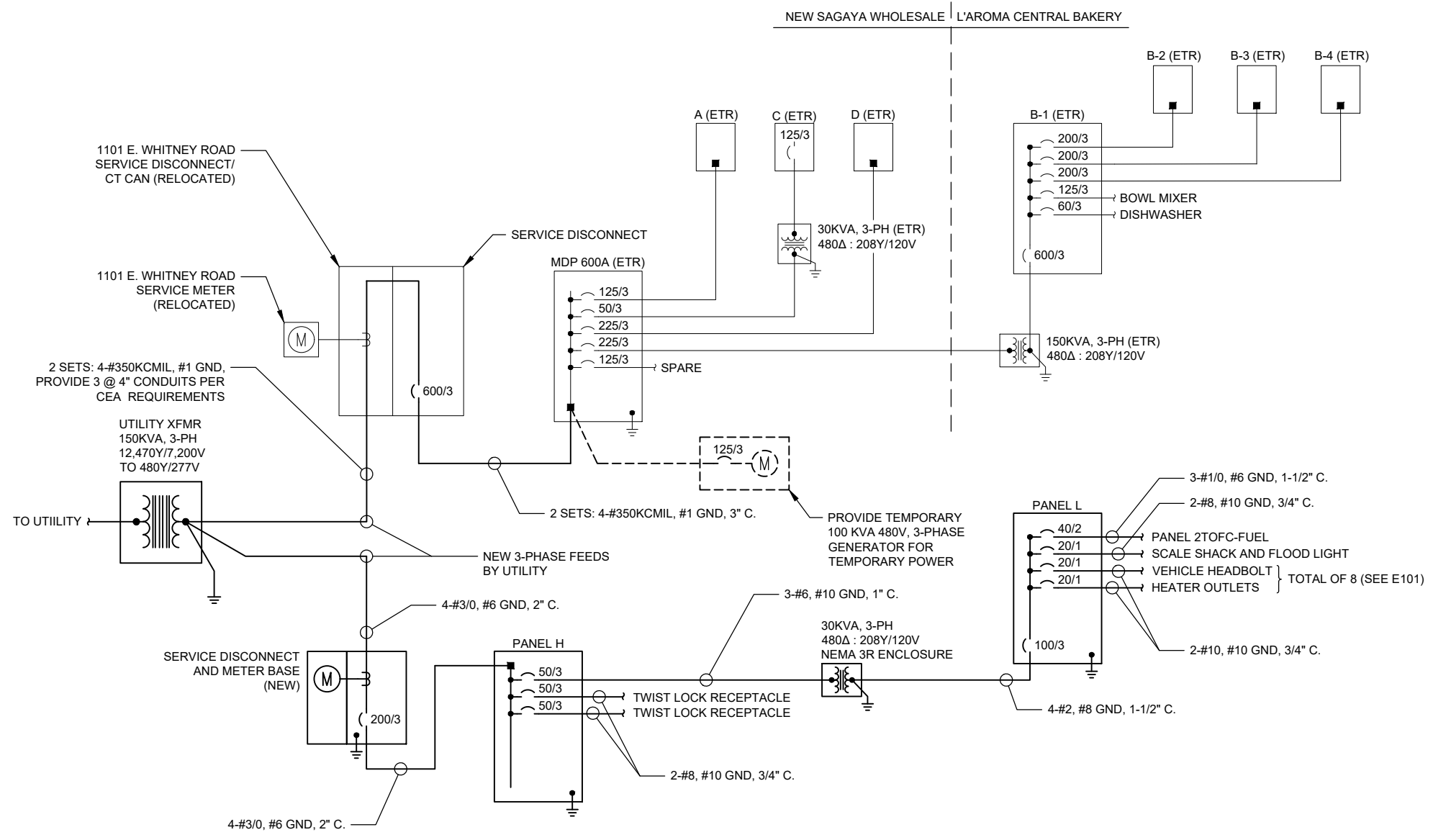
DRAWN BY: JAB/AHD
CHECKED BY: EWC
DATE: 8/28/2024
REVISIONS:

PHASE: CONSTRUCTION DOCUMENTS

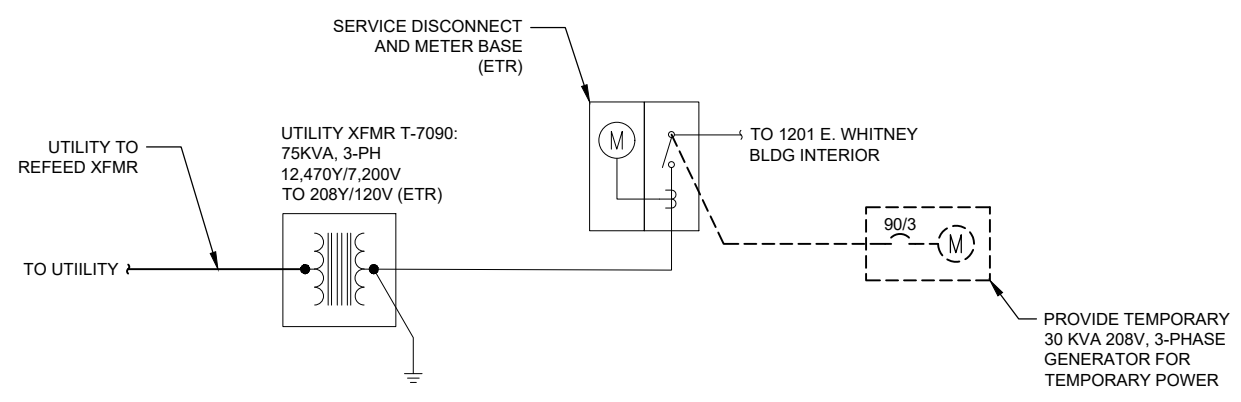
DRAWING TITLE: LEGENDS, SCHEDULES AND SITE PLAN
SUB CON. JOB NO. XXXXXX
MBA JOB NO. 23030EWR

SHEET NO.

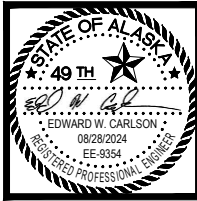
E001



1 1101 E. WHITNEY ROAD - POWER ONE-LINE DIAGRAM
E100 NTS



2 1201 E. WHITNEY ROAD - POWER ONE-LINE DIAGRAM
E100 NTS



MBA
Consulting Engineers, Inc.
(907) 274-2622 / FAX (907) 274-0914

ALASKA RAILROAD CORPORATION
NEW 3-PHASE SERVICE LINE
1115 E. WHITNEY ROAD
ANCHORAGE, AK 99501

DRAWN BY:	JAB/AHD
CHECKED BY:	EWC
DATE:	8/28/2024
REVISIONS:	
PHASE:	CONSTRUCTION DOCUMENTS
DRAWING TITLE:	ONE-LINES AND DETAILS
SUB CON. JOB NO.	XXXXXX
MBA JOB NO.	23030EWR

VERIFY SCALES: IF THIS LINE DOES NOT MEASURE 2", ADJUST SCALE ACCORDINGLY.

SHEET NO.
E100



ALASKA RAILROAD
CORPORATION
NEW 3-PHASE SERVICE LINE
1115 E. WHITNEY ROAD
ANCHORAGE, AK 99501

PANEL: H MOUNTING MAINS OPTIONS
 SURFACE LUGS FEEDTHRU SHUNT TRIP ISO GND BAR
LOCATION: **SOUTHEAST EXTERIOR** FLUSH CB SUBFEED LUG SUBFEED BRKR SOLID NEUTRAL

VOLTAGE: 480Y/277 VOLT 3 PHASE 4 WIRE 200 A MCB 22k AIC

CIRCUIT DESCRIPTION	KVA	AMP	P	CKT	CKT	AMP	P	KVA	CIRCUIT DESCRIPTION
PANEL L VIA 30 KVA XFMR	12.8	50	3	1	2	50	3		TWIST LOCK RECEPTACLE
SPACE		20	1	3	4				
SPACE		20	1	5	6				
SPACE		20	1	7	8				
SPACE		20	1	9	10	50	3		TWIST LOCK RECEPTACLE
SPACE		20	1	11	12				
SPACE		20	1	13	14	20	1		SPACE
SPACE		20	1	15	16	20	1		SPACE
SPACE		20	1	17	18	20	1		SPACE
SPACE		20	1	19	20	20	1		SPACE
SPACE		20	1	21	22	20	1		SPACE
SPACE		20	1	23	24	20	1		SPACE
CONNECTED LOAD:	12.8 KVA			15.4 A					REMARKS:
DEMAND LOAD:	12.8 KVA			15.4 A					

DATE: _____
REV: _____

PANEL: L MOUNTING MAINS OPTIONS
 SURFACE LUGS FEEDTHRU SHUNT TRIP ISO GND BAR
LOCATION: **SOUTHEAST EXTERIOR** FLUSH CB SUBFEED LUG SUBFEED BRKR SOLID NEUTRAL

VOLTAGE: 208Y/120 VOLT 3 PHASE 4 WIRE 100 A MLO 22k AIC

CIRCUIT DESCRIPTION	KVA	AMP	P	CKT	CKT	AMP	P	KVA	CIRCUIT DESCRIPTION
HEADBOLT HEATER OUTLET	1.0	20	1	1	2	40	2	4.3	PANEL 2 TOFC-FUEL
HEADBOLT HEATER OUTLET	1.0	20	1	3	4				
HEADBOLT HEATER OUTLET	1.0	20	1	5	6	20	1	0.5	SCALE SHACK AND FLOOD LIGHT
HEADBOLT HEATER OUTLET	1.0	20	1	7	8	20	1		SPARE
HEADBOLT HEATER OUTLET	1.0	20	1	9	10	20	1		SPARE
HEADBOLT HEATER OUTLET	1.0	20	1	11	12	20	1		SPARE
HEADBOLT HEATER OUTLET	1.0	20	1	13	14	20	1		SPARE
HEADBOLT HEATER OUTLET	1.0	20	1	15	16	20	1		SPARE
SPARE		20	1	17	18	20	1		SPARE
SPARE		20	1	19	20	20	1		SPARE
SPACE				21	22				SPACE
SPACE				23	24				SPACE
SPACE				25	26				SPACE
SPACE				27	28				SPACE
CONNECTED LOAD:	12.8 KVA			35.6 A					REMARKS:
DEMAND LOAD:	12.9 KVA			35.9 A					

DATE: _____
REV: _____

NEC 220.87 Service Load Calc (addition to an existing service)
1101 E. Whitney Road - New Sagaya Warehouse / L'Arma Bakery

Existing Load		Generator Sizing	
Voltage	480 3 Phase		
Maximum Demand	75.60 kW (1-year history as reported by the utility)		
Power Factor	0.80 Estimated		
Feeder Load	94.50 kVA Connected Load		
Demand Factor	125% NEC 220.87(2)		
Calculated Load	118.13 kVA Demand Load	142	Amps

Total New Load Summary

	Connected Load	NEC Load
Existing Load	94.50 kVA	118.13 kVA
New Load	0.00 kVA	0.00 kVA
Total Service Load	94.50 kVA	118.13 kVA
	114 Amps	142 Amps

Existing Service Size	600 Amps	480 Volts	3 Phase
Will Provide	76% Spare Capacity		

NEC 220.87 Service Load Calc (addition to an existing service)
1101 E. Whitney Road - ARRC Lot / Scale Shack / Fuel Panel

Existing Load		Panel L Calculation	
Voltage	240 1 Phase		
Maximum Demand	4.32 kW (1-year history as reported by facility maintenance)		
Power Factor	0.80 Estimated		
Feeder Load	5.40 kVA Connected Load		
Demand Factor	125% NEC 220.87(2)		
Calculated Load	6.75 kVA Demand Load	28	Amps

New Load

Units	VA /Unit	kVA	NEC Factor	NEC kVA	
Vehicle headbolt heater outlets	8	1000	8.00	1.00	8.00
Load Total			8.00		8.00

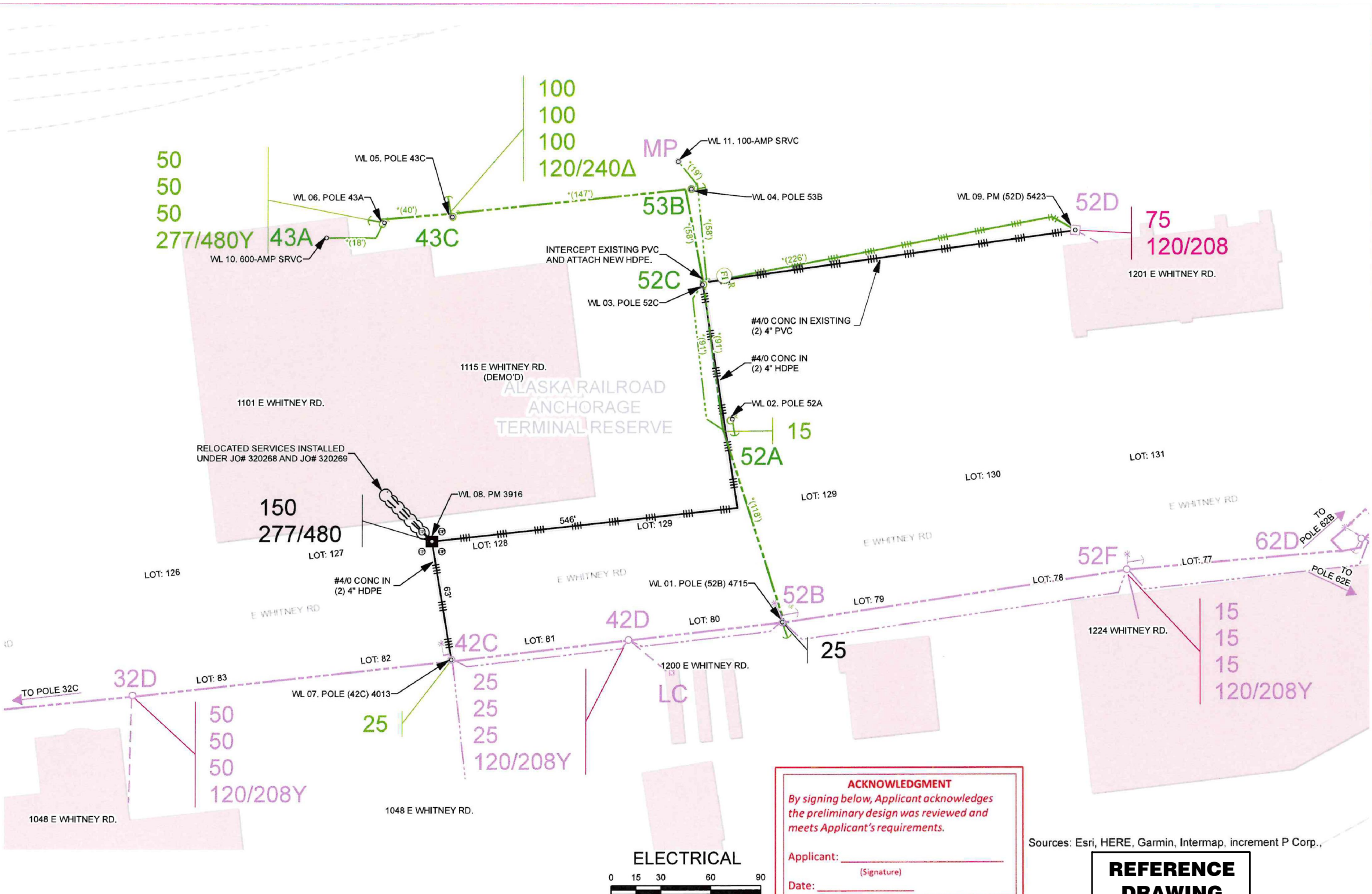
Total New Load Summary

	Connected Load	NEC Load
Existing Load	5.40 kVA	6.75 kVA
New Load	8.00 kVA	8.00 kVA
Total Service Load	13.40 kVA	14.75 kVA
	37 Amps	41 Amps

New Service Size	100 Amps	208 Volts	3 Phase
Will Provide	59% Spare Capacity		

VERIFY SCALES: IF THIS LINE 0' ————— 12"
DOES NOT MEASURE 2", ADJUST SCALE ACCORDINGLY.

SHEET NO.
E101



ACKNOWLEDGMENT
By signing below, Applicant acknowledges the preliminary design was reviewed and meets Applicant's requirements.

Applicant: _____
(Signature)

Date: _____

REFERENCE DRAWING

Sources: Esri, HERE, Garmin, Intermap, increment P Corp.,

POLE CONTACT RECORD

LOCATION	TEL	CATV	Manuf. Date	Volt Rating	Insul. Type	Insul. Size	Cond. Size/Type	Quantity in Feet

INITIAL/DATE: _____

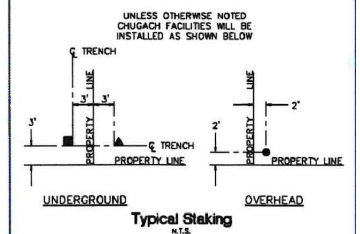
CALL BEFORE YOU DIG!

LOCATE CALL CENTER OF ALASKA (LCCA)
ANCHORAGE AREA 278-3121
STATEWIDE 800-478-3121
AT&T ALASKOM INC 264-6465
ALASKA RAILROAD UTILITIES 265-2457
ALYESKA CABLE TV (GIRDWOOD) 783-2982
KULIS AIR BASE 249-1499
MILITARY PETROLEUM FUEL LINES 552-2334
STATE STORM DRAINS & STREET LIGHTS 333-2411

CONSTRUCTION LEGEND

Symbol	Description
■	FABRICATION TRANSFORMER
▲	PUBLICIAL
●	POWER POLE
⊙	STREET LIGHT
⊠	WARNING POST
—	1 0 UG PRI CONDUCTOR
- - -	3 0 UG PRI CONDUCTOR
- · - · -	1 G SECONDARY CONDUCTOR
· · · · ·	1 G STREET LIGHT CONDUCTOR
---	1 0 OH CONDUCTOR
- · - · -	3 0 OH CONDUCTOR
⊠	JUNCTION BOX
⊙	SPLICE POINT
⊠	SPARE CONDUIT
⊠	CONDUIT W/ CONDUCTOR
⊠	SWITCH CABINET

R.O.W LEGEND
- - - - - R.O.W LINE
- - - - - CENTERLINE OF TRENCH



PROJECT: ARRC TERMINAL RES TR F

NO.	DESIGN / CONSTRUCTION / ASBUILT REVISION	DWN. BY / DATE	REVIEWED MGR./SUPV / DATE	APPROVED DIRECTOR / DATE
A	PRELIMINARY	JRS - 05/24/23		
0	ISSUED FOR ARRC REVIEW	JRS - 06/07/24	Jrs 6/10/24	

ENGINEER / JOSHUA SHAFER W.O.# E2314211

ENGINEERING STAMP

Chugach Electric Association, Inc.
5601 Electron Drive - P.O. Box 196300
Anchorage, Alaska 99519-6300

DRAWING NAME: ARRC TERMINAL RES TR F
RELO
GRID: 1132 MAP: 1303-08C
FEEDER: S10F2

W.O. NUMBER: E2314211

SHT. 11 OF 13



MBA
Consulting Engineers, Inc.
(907) 274-2622 / FAX (907) 274-0914

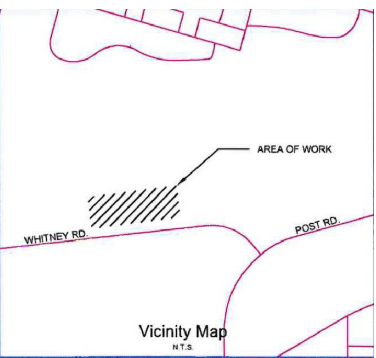
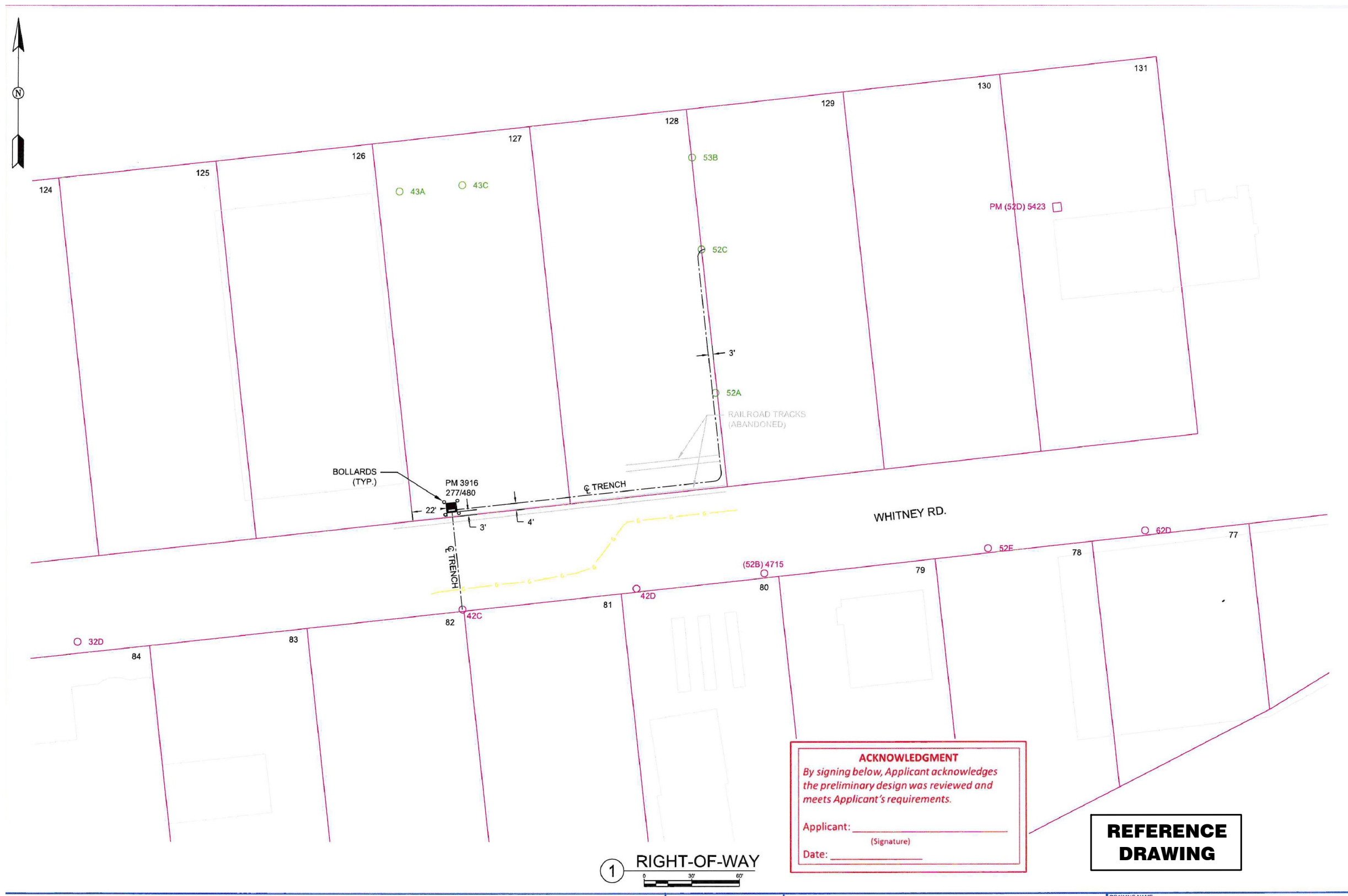
ALASKA RAILROAD CORPORATION
NEW 3-PHASE SERVICE LINE
1115 E. WHITNEY ROAD
ANCHORAGE, AK 99501

DRAWN BY: JAB/AHD
CHECKED BY: EWC
DATE: 8/28/2024

PHASE: CONSTRUCTION DOCUMENTS
DRAWING TITLE: CEA REFERENCE DRAWINGS
SUB CON. JOB NO. XXXXXX
MBA JOB NO. 23030EWR

SHEET NO.
E201

VERIFY SCALES: IF THIS LINE DOES NOT MEASURE 2", ADJUST SCALE ACCORDINGLY.



CONDUCTOR DATA

Manuf.	Manuf. Date	Manuf. Date
Volts Rating	Volts Rating	Volts Rating
Insul. Type	Insul. Type	Insul. Type
Insul. Size	Insul. Size	Insul. Size
Cond. Size/Type	Cond. Size/Type	Cond. Size/Type
Quantity in Feet	Quantity in Feet	Quantity in Feet

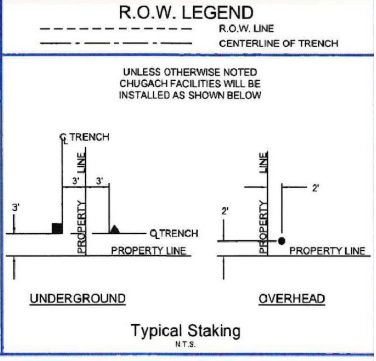
CALL BEFORE YOU DIG!

LOCATE CALL CENTER OF ALASKA (LCCA)

ANCHORAGE AREA	278-3121
STATEWIDE	800-478-3121
AT&T ALASCOM INC.	264-8465
ALASKA RAILROAD UTILITIES	255-2457
ALYESKA CABLE TV (GIRDWOOD)	783-2982
KULIS AIR BASE	249-1499
MILITARY PETROLEUM FUEL LINES	552-2334 OR 552-5342
STATE STORM DRAINS & STREET LIGHTS	333-2411

CONSTRUCTION LEGEND

NEW	EXISTING



ACKNOWLEDGMENT
 By signing below, Applicant acknowledges the preliminary design was reviewed and meets Applicant's requirements.

Applicant: _____
 (Signature)

Date: _____

REFERENCE DRAWING



PROJECT: 1115 WHITNEY RD.				
DESIGNER/PROJECT ENGINEER: JOSHUA SHAFER		W.O. #: E2314211		
NO.	DESIGN/CONSTRUCTION/ASBUILT REVISION	DWN BY/DATE	REVIEWED (MGR/SUPV)/DATE	APPROVED (DIRECTOR)/DATE
A	PRELIMINARY	JRS 05/24/23		
0	ISSUED FOR ARRC REVIEW	JRS 06/07/24	JRS 6/10/24	

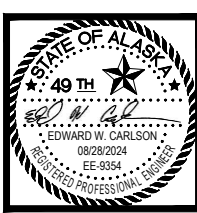
ENG. STAMP

CHUGACH
POWERING ALASKA'S FUTURE

Chugach Electric Association, Inc.
5601 Electron Drive - P.O. Box 196300
Anchorage, Alaska 99519-6300

DRAWING NAME: ARRC TERMINAL RES TR F RELO
 GRID: 1132 MAP: 1308-08C
 FEEDER: S10F2

W.O. NO.: E2314211
 C.W.P. REF. NO.: 12 13



MBA
 Consulting Engineers, Inc.
 (907) 274-2622 / FAX (907) 274-0914

ALASKA RAILROAD CORPORATION
 NEW 3-PHASE SERVICE LINE
 1115 E. WHITNEY ROAD
 ANCHORAGE, AK 99501

DRAWN BY: JAB/AHD
 CHECKED BY: EWC
 DATE: 8/28/2024

REVISIONS:

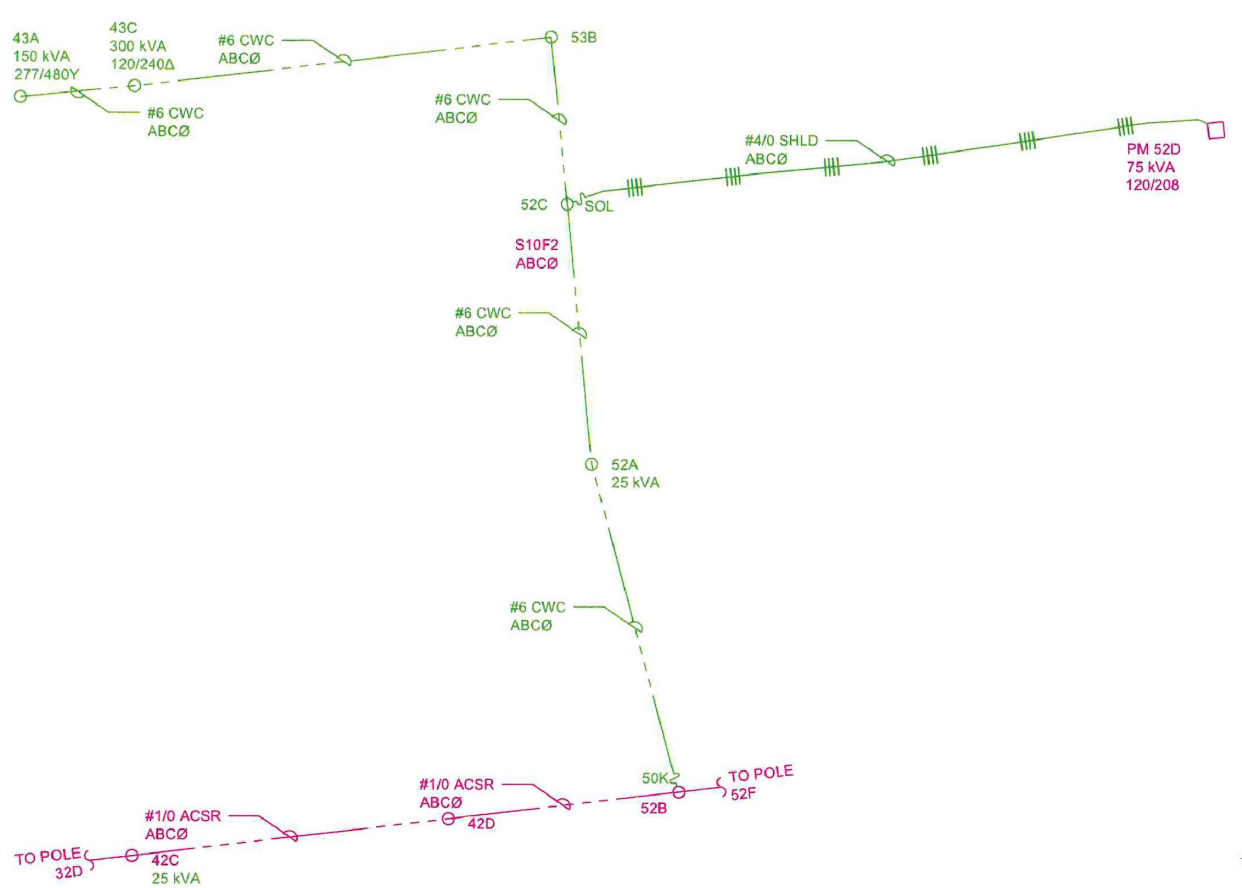
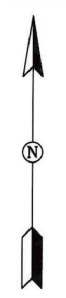
PHASE: CONSTRUCTION DOCUMENTS

DRAWING TITLE: CEA REFERENCE DRAWINGS

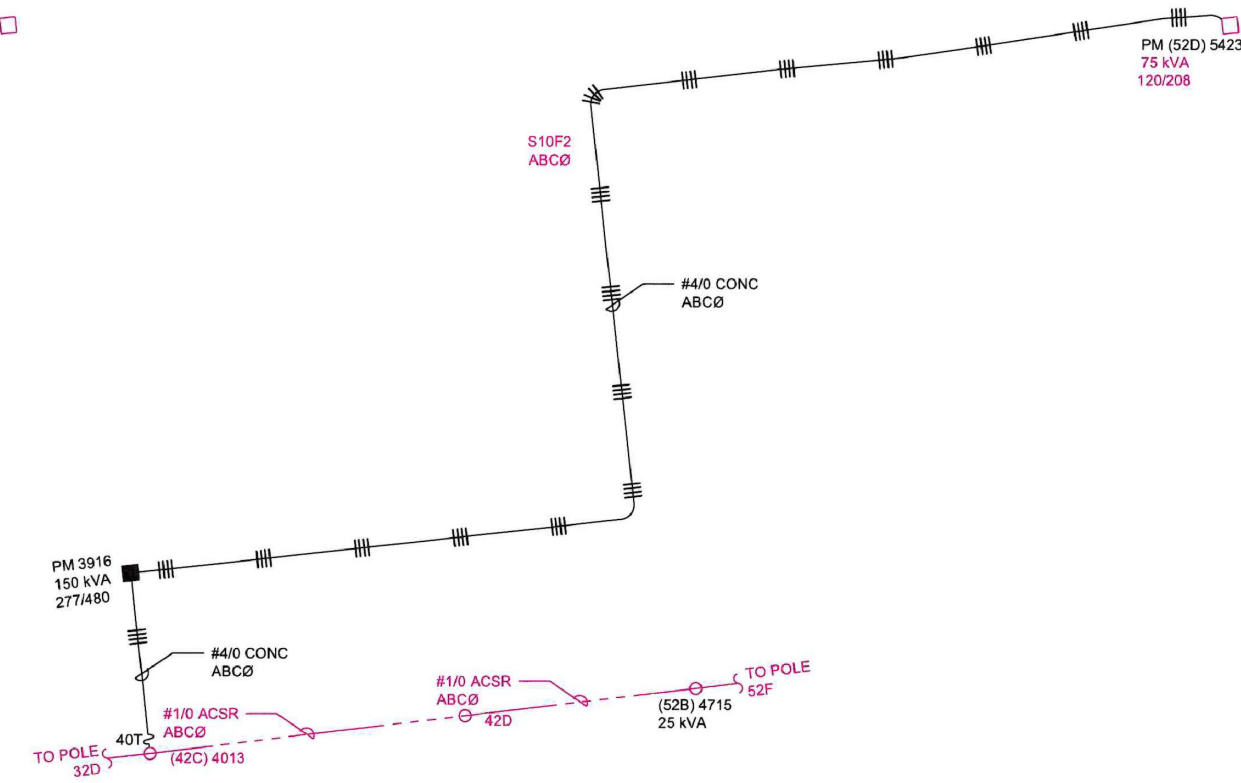
SUB CON. JOB NO. XXXXXX
 MBA JOB NO. 23030EWR

VERIFY SCALES: IF THIS LINE DOES NOT MEASURE 2", ADJUST SCALE ACCORDINGLY.

SHEET NO. **E202**



EXISTING PRIMARY CIRCUIT DIAGRAM
NTS



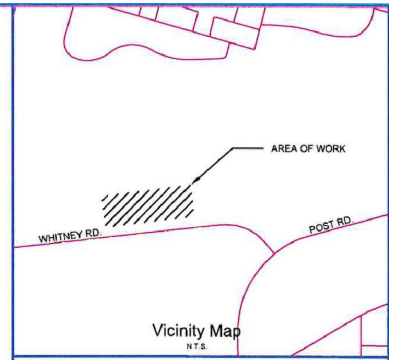
NEW PRIMARY CIRCUIT DIAGRAM
NTS

ACKNOWLEDGMENT
By signing below, Applicant acknowledges the preliminary design was reviewed and meets Applicant's requirements.

Applicant: _____
(Signature)

Date: _____

**REFERENCE
DRAWING**



CONDUCTOR DATA

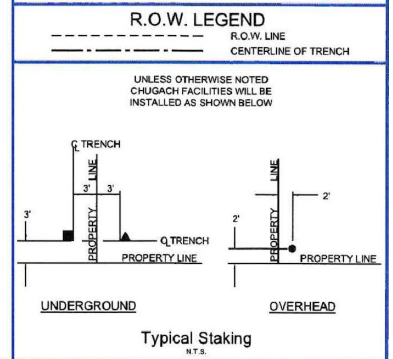
Manuf.	Manuf. Date	Manuf.	Manuf. Date
Vol. Rating	Vol. Rating	Vol. Rating	Vol. Rating
Insul. Type	Insul. Type	Insul. Type	Insul. Type
Insul. Size	Insul. Size	Insul. Size	Insul. Size
Cond. Size/Type	Cond. Size/Type	Cond. Size/Type	Cond. Size/Type
Quantity in Feet	Quantity in Feet	Quantity in Feet	Quantity in Feet

CALL BEFORE YOU DIG!

LOCATE CALL CENTER OF ALASKA (LCCA)
ANCHORAGE AREA..... 278-3121
STATEWIDE..... 800-478-5121
AT&T ALASKA.COM INC..... 284-8485
ALASKA RAILROAD UTILITIES..... 285-2457
ALYESKA CABLE TV (GIRDWOOD)..... 783-2982
KULIS AIR BASE..... 249-1499
MILITARY PETROLEUM FUEL LINES..... 553-2334
STATE STORM DRAINS & STREET LIGHTS..... 333-2411

CONSTRUCTION LEGEND

NEW	EXISTING



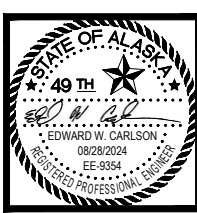
PROJECT: 1115 WHITNEY RD.		DESIGNER/PROJECT ENGINEER: JOSHUA SHAFER		W.O. #: E2314211	
NO.	DESIGN/CONSTRUCTION/ASBUILT REVISION	DWN BY/DATE	REVIEWED (MGR/SUPV)/DATE	APPROVED (DIRECTOR)/DATE	
A	PRELIMINARY	JRS 05/24/23			
0	ISSUED FOR CONSTRUCTION	JRS 06/03/24	JRS 6/10/24		

ENG. STAMP

Chugach Electric Association, Inc.
5601 Electron Drive - P.O. Box 196300
Anchorage, Alaska 99519-6300

DRAWING NAME: ARRC TERMINAL RES TR F RELO
GRID: 1132 MAP: 1308-08C
FEEDER: S10F2

W.O. NO.: E2314211
C.W.P. REF. NO.: 13 13



MBA
Consulting Engineers, Inc.
(907) 274-2622 / FAX (907) 274-0914

ALASKA RAILROAD
CORPORATION
NEW 3-PHASE SERVICE LINE
1115 E. WHITNEY ROAD
ANCHORAGE, AK 99501

DRAWN BY: JAB/AHD
CHECKED BY: EWC
DATE: 8/28/2024
REVISIONS:

PHASE: CONSTRUCTION DOCUMENTS
DRAWING TITLE: CEA REFERENCE DRAWINGS
SUB CON. JOB NO. XXXXXX
MBA JOB NO. 23030EWR

VERIFY SCALES: IF THIS LINE DOES NOT MEASURE 2", ADJUST SCALE ACCORDINGLY.

SHEET NO.
E203