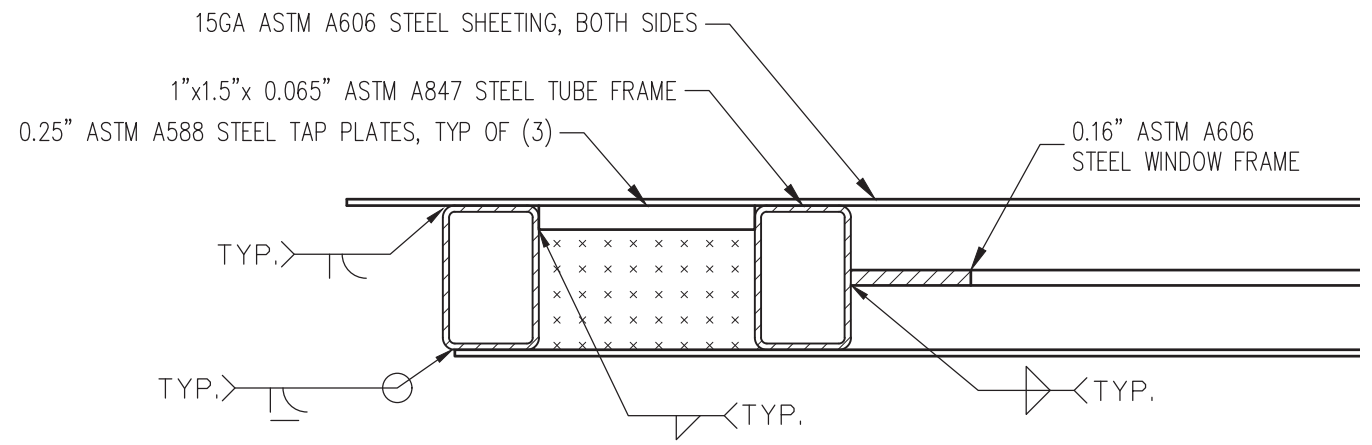
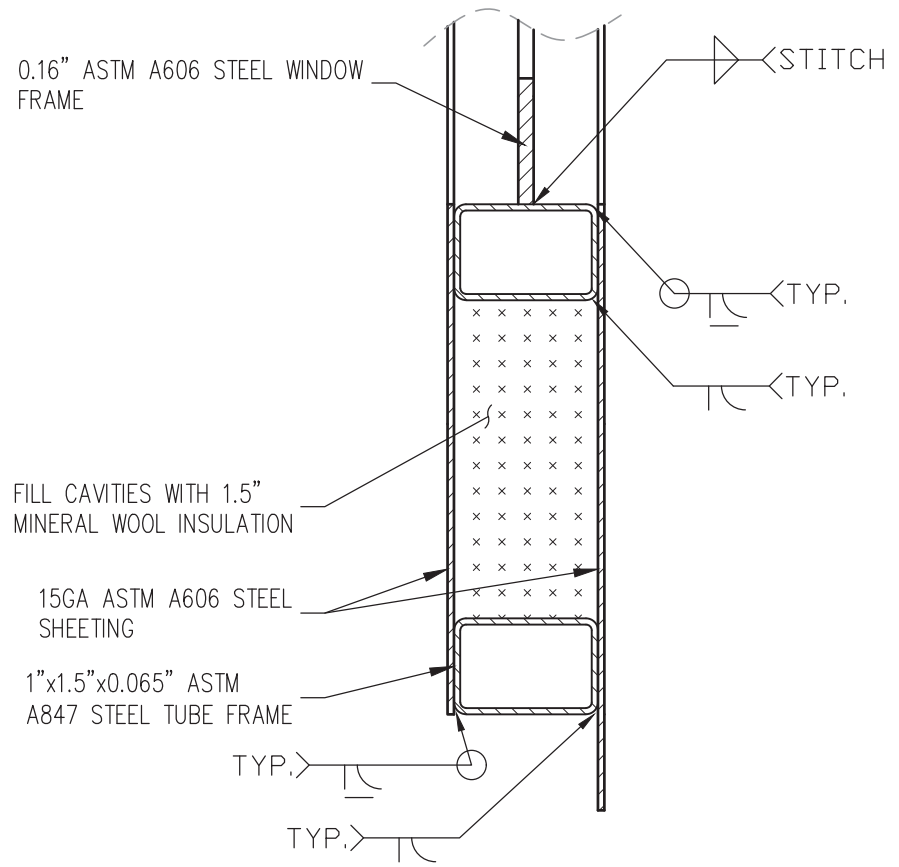


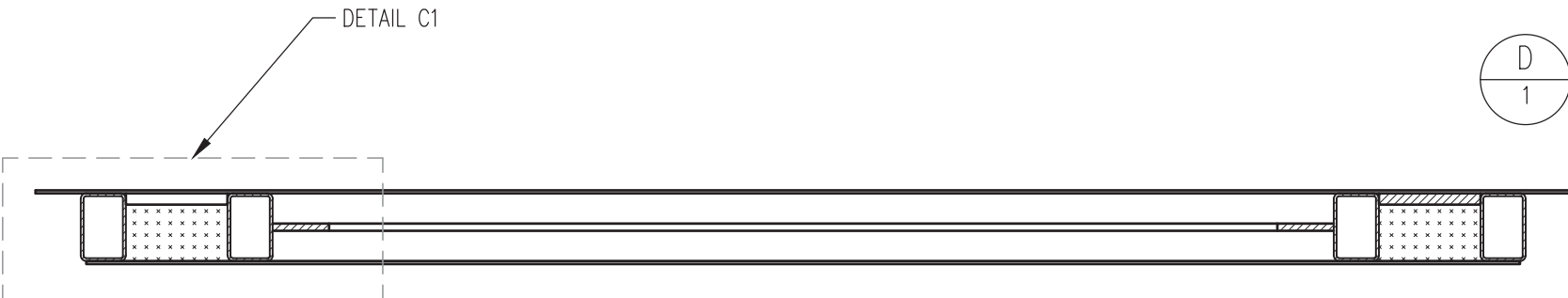
**A**  
1 UPPER DUTCH DOOR – VIEW FROM EXTERIOR  
SCALE: NTS



**C**  
1 UPPER DUTCH DOOR – SECTION DETAIL  
SCALE: NTS



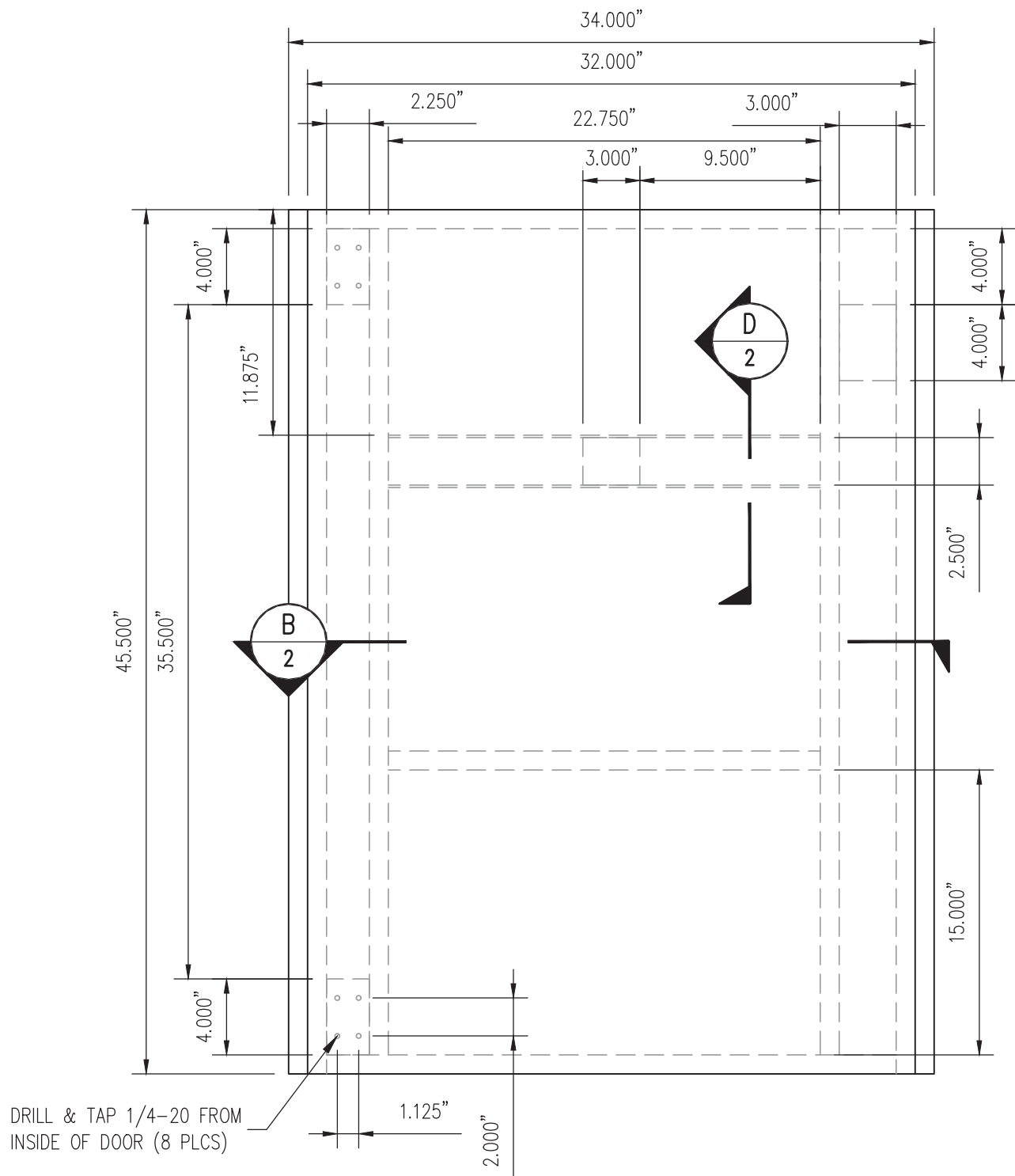
**D**  
1 UPPER DUTCH DOOR – SECTION DETAIL  
SCALE: NTS



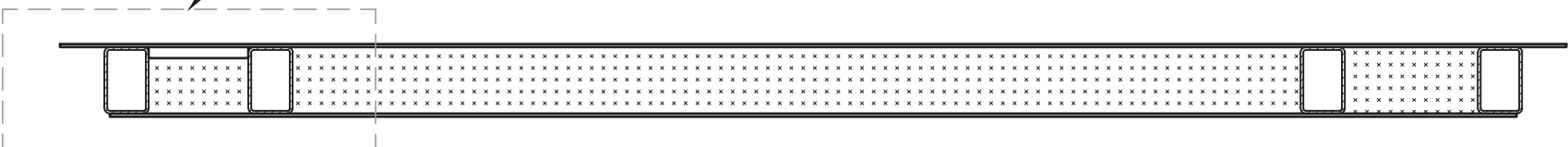
**B**  
1 UPPER DUTCH DOOR – SECTION VIEW  
SCALE: NTS

- NOTES:
- 1) FILL DOOR CAVITIES WITH MINERAL WOOL INSULATION.
  - 2) WELD PROCESS: FCAW/SAW/GTAW
  - 3) CONTRACTOR TO VERIFY ALL MEASUREMENTS AND FIT OF DOOR TO COACH DOOR FRAME STRUCTURE.
  - 4) LEFT SIDE DOOR SHOWN, RIGHT HAND DOOR IS MIRROR IMAGE OF THAT SHOWN.

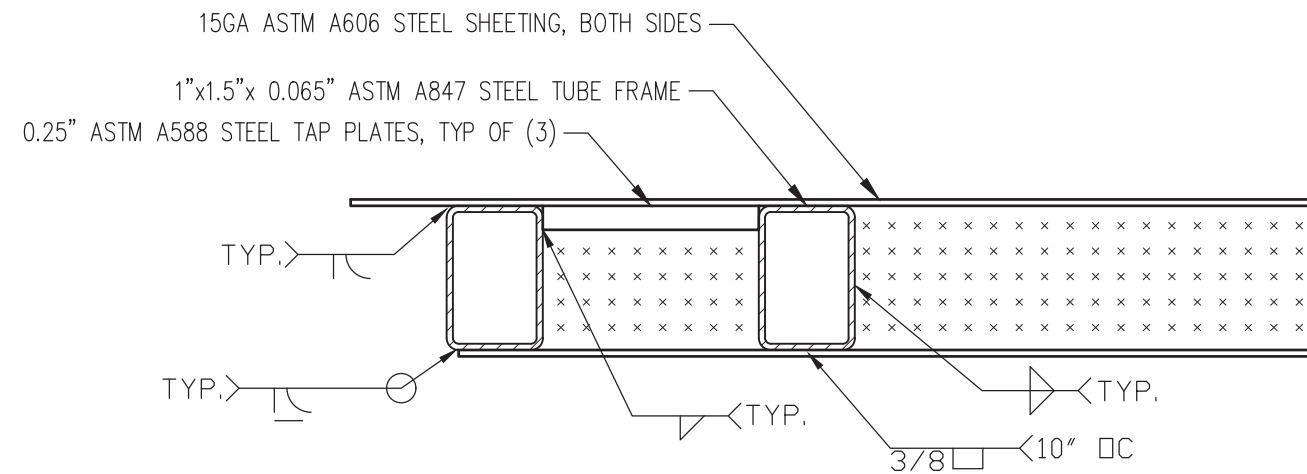
<b>ALASKA RAILROAD CORPORATION</b> ENGINEERING SERVICES P.O. BOX 107500, ANCHORAGE, ALASKA 99510-7500		
PROJECT : <b>MOTIVE POWER AND EQUIPMENT PASSENGER EQUIPMENT</b>		
TITLE: <b>ARR 552 PAINT &amp; REPAIRS ADD. ALT. 1 UPPER VESTIBULE DOOR FABRICATION</b>		
DESIGNED BY: ARRC	SCALE : NTS	AFE NO.: 11079 - ARRC
DRAWN BY: CDL	DATE : MAY 2024	ACAD FILE:
CHECKED BY: ARRC		DWG NO. 1 OF 6
APPROVED BY: ARRC		



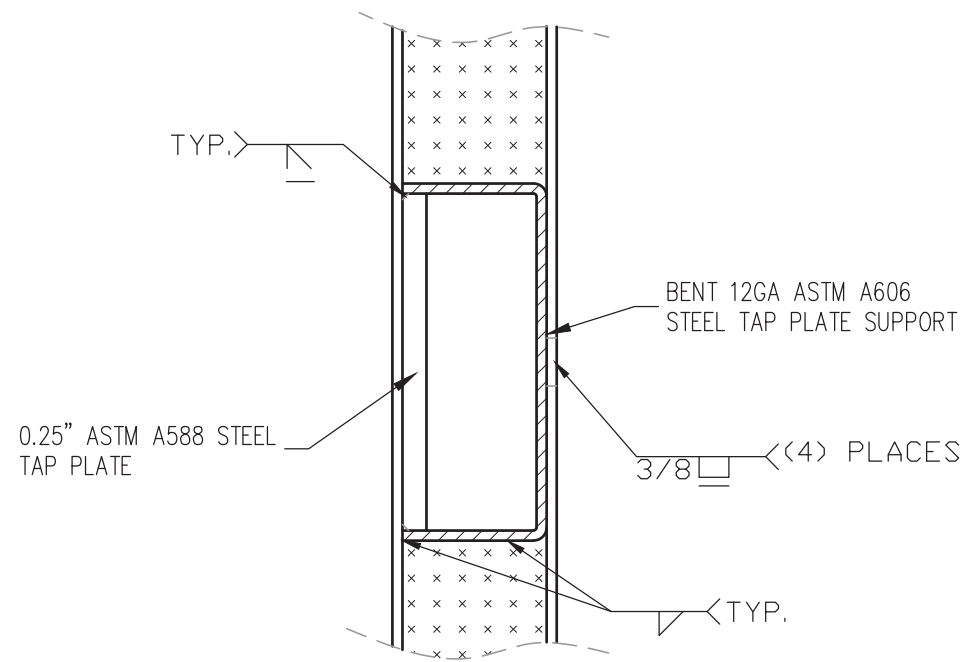
**A**  
2  
LOWER DUTCH DOOR - VIEW FROM EXTERIOR  
SCALE: NTS



**B**  
2  
LOWER DUTCH DOOR - SECTION VIEW  
SCALE: NTS



**C**  
2  
LOWER DUTCH DOOR - SECTION DETAIL  
SCALE: NTS

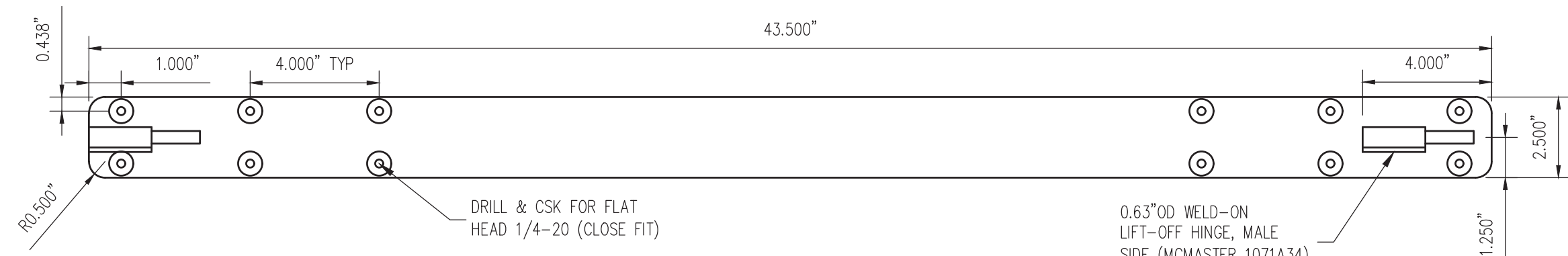


**D**  
2  
LOWER DUTCH DOOR - SECTION VIEW  
SCALE: NTS

NOTES:

- 1) FILL DOOR CAVITIES WITH MINERAL WOOL INSULATION.
- 2) WELD PROCESS: FCAW/SMAG/GTAW
- 3) CONTRACTOR TO VERIFY ALL MEASUREMENTS AND FIT OF DOOR TO COACH DOOR FRAME STRUCTURE.
- 4) LEFT SIDE DOOR SHOWN, RIGHT SIDE DOOR IS MIRROR IMAGE OF THAT SHOWN.

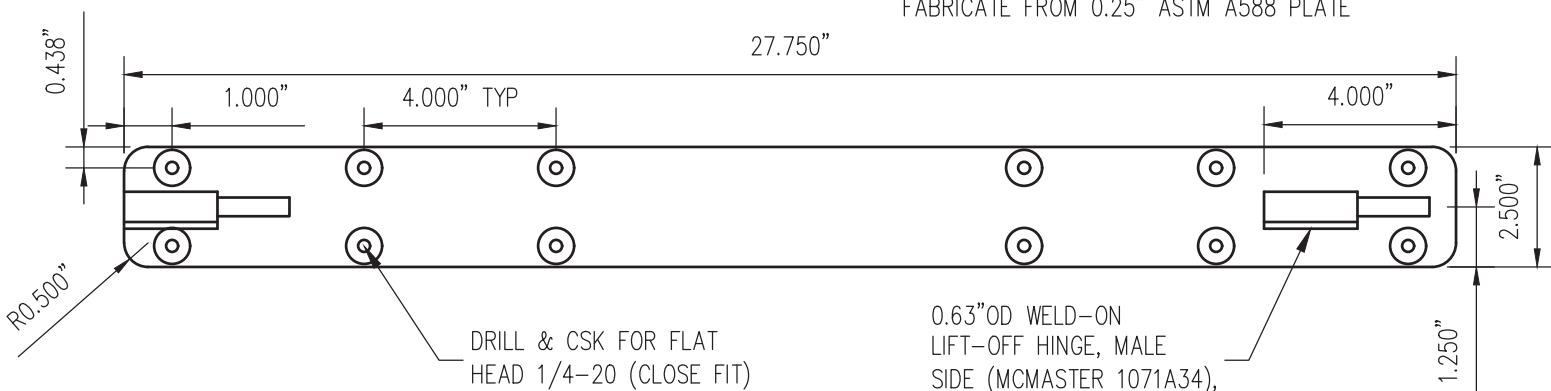
<b>ALASKA RAILROAD CORPORATION</b> ENGINEERING SERVICES P.O. BOX 107500, ANCHORAGE, ALASKA 99510-7500		
<b>PROJECT :</b> <b>MOTIVE POWER AND EQUIPMENT PASSENGER EQUIPMENT</b>		
<b>TITLE:</b> <b>ARR 552 PAINT &amp; REPAIRS ADD. ALT. 1 LOWER VESTIBULE DOOR FABRICATION</b>		
DESIGNED BY: <u>ARRC</u> DRAWN BY: <u>CDL</u> CHECKED BY: <u>ARRC</u> APPROVED BY: <u>ARRC</u>	SCALE : NTS DATE : MAY 2024	AFE NO.: 11079 - ARRC ACAD FILE: DWG NO. <b>2</b> OF <b>6</b>



DRILL & CSK FOR FLAT HEAD 1/4-20 (CLOSE FIT)

0.63"OD WELD-ON LIFT-OFF HINGE, MALE SIDE (MCMASTER 1071A34), 2 PLCS

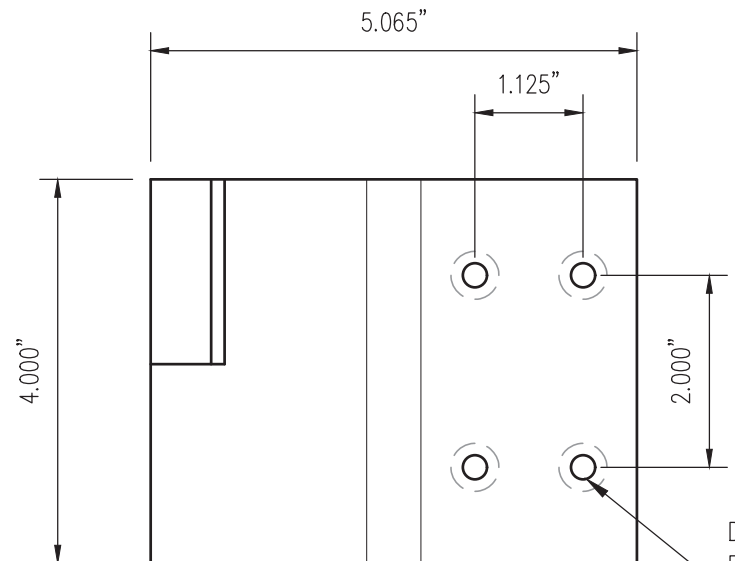
LOWER VESTIBULE DUTCH DOOR HINGE MOUNT PLATE  
FABRICATE FROM 0.25" ASTM A588 PLATE



DRILL & CSK FOR FLAT HEAD 1/4-20 (CLOSE FIT)

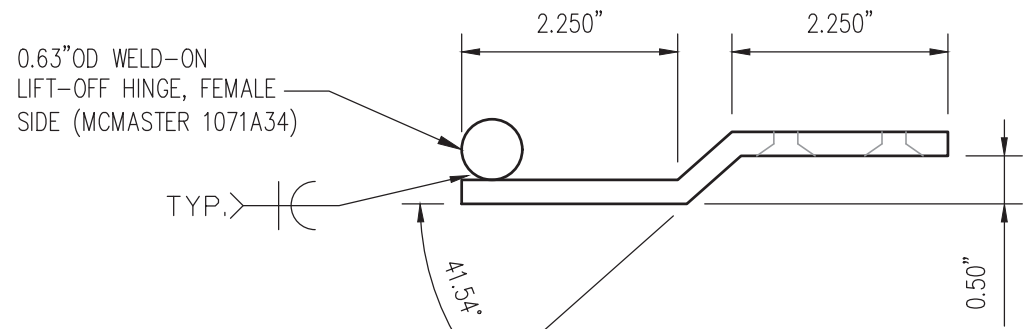
0.63"OD WELD-ON LIFT-OFF HINGE, MALE SIDE (MCMASTER 1071A34), 2 PLCS

UPPER VESTIBULE DUTCH DOOR HINGE MOUNT PLATE  
FABRICATE FROM 0.25" ASTM A588 PLATE



DRILL & CSK OTHER SIDE FOR FLAT HEAD 1/4-20 (CLOSE FIT)

A  
3 DUTCH DOOR FRAME HINGE PLATES - TOP VIEW  
SCALE: NTS

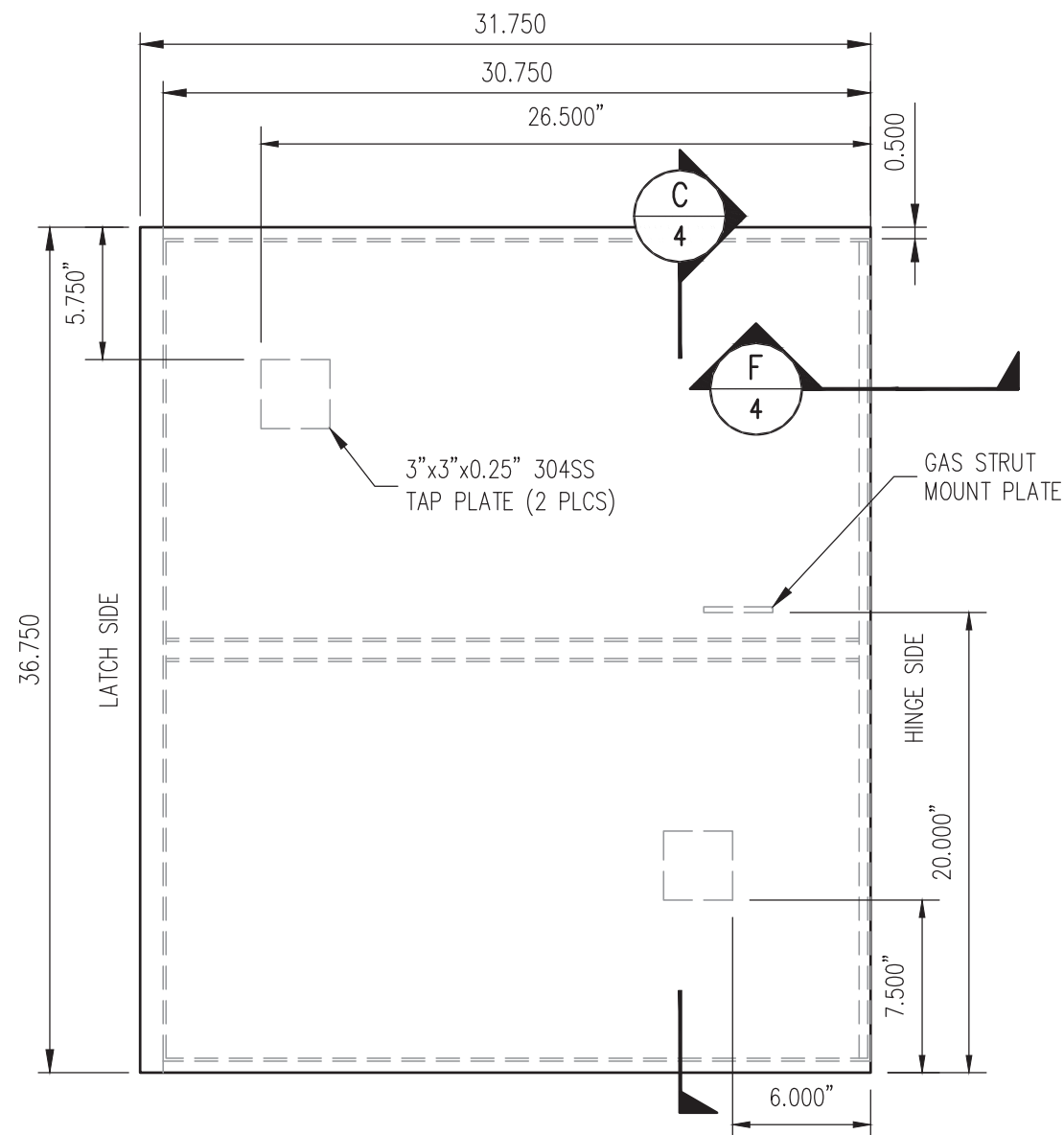


0.63"OD WELD-ON LIFT-OFF HINGE, FEMALE SIDE (MCMASTER 1071A34)

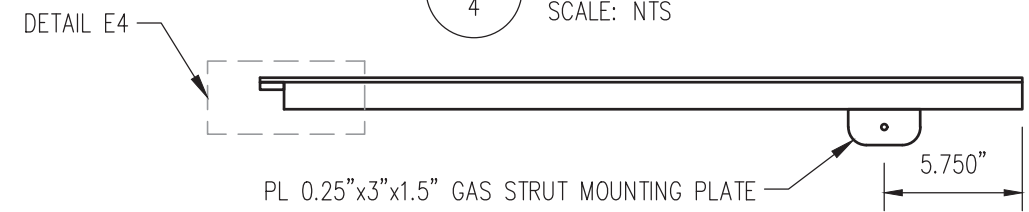
VESTIBULE DUTCH DOOR BRACKET  
FABRICATE FROM 0.25" ASTM A588.  
QTY (4) REQUIRED

B  
3 DOOR MOUNTED HINGE PLATES - TOP & END VIEW  
SCALE: NTS

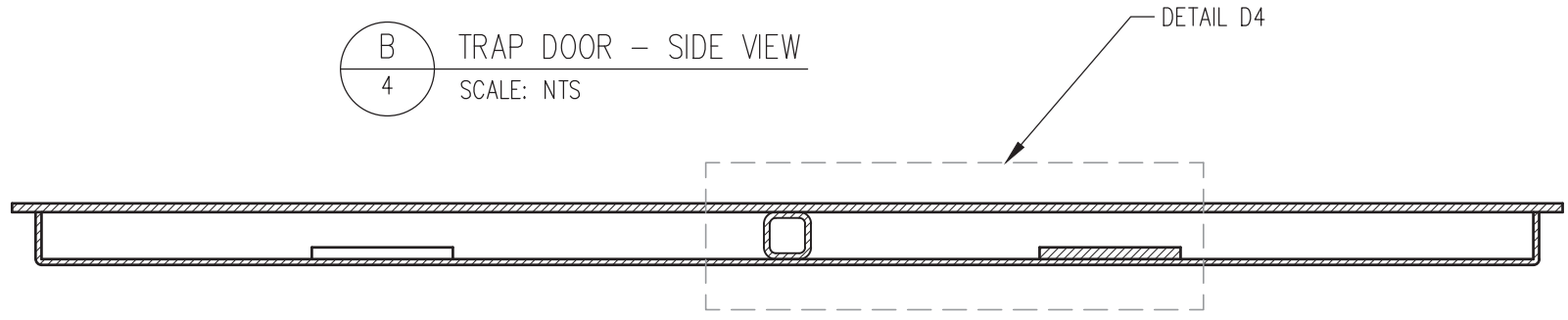
<b>ALASKA RAILROAD CORPORATION</b> ENGINEERING SERVICES P.O. BOX 107500, ANCHORAGE, ALASKA 99510-7500		
<b>PROJECT :</b> <b>MOTIVE POWER AND EQUIPMENT PASSENGER EQUIPMENT</b>		
<b>TITLE:</b> <b>ARR 552 PAINT &amp; REPAIRS ADD. ALT. 1 DUTCH DOOR HINGE FABRICATION</b>		
DESIGNED BY: ARRC	SCALE : NTS	AFE NO.: 11079 - ARRC
DRAWN BY: CDL	DATE : MAY 2024	ACAD FILE:
CHECKED BY: ARRC		DWG NO. 3 OF 6
APPROVED BY: ARRC		



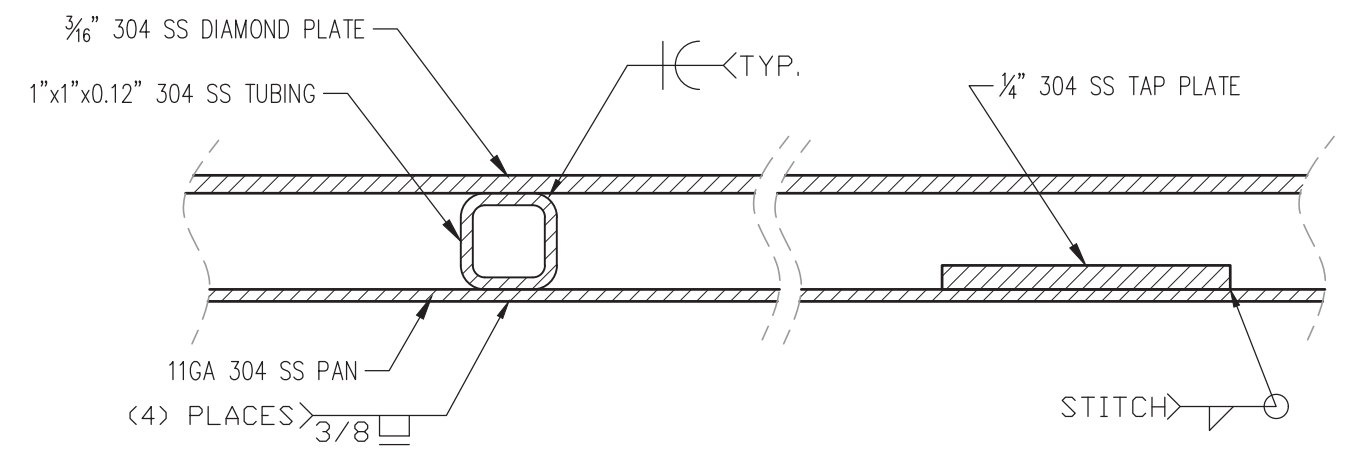
**A**  
4 TRAP DOOR – TOP VIEW  
SCALE: NTS



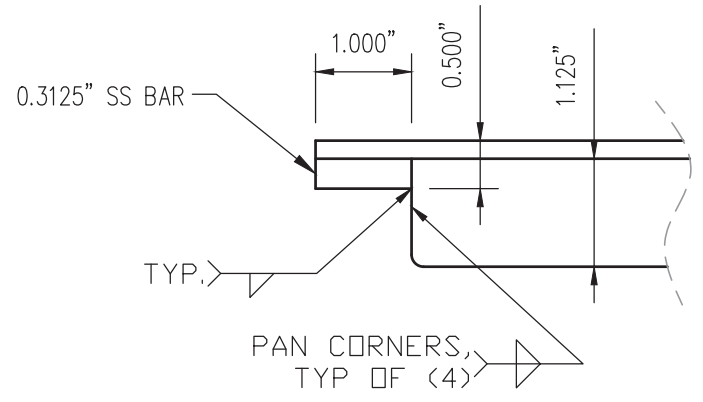
**B**  
4 TRAP DOOR – SIDE VIEW  
SCALE: NTS



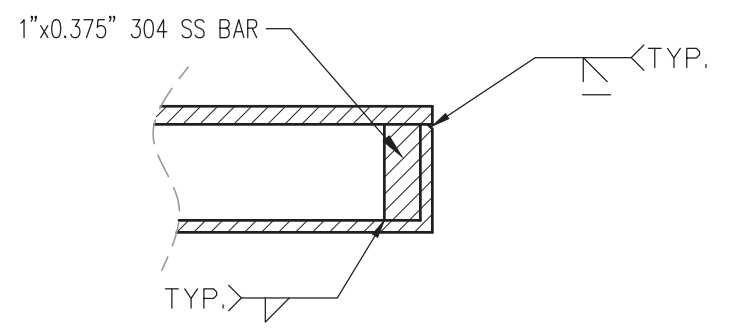
**C**  
4 TRAP DOOR – ROTATED SECTION VIEW  
SCALE: NTS



**D**  
4 TRAP DOOR – SECTION DETAIL  
SCALE: NTS



**E**  
4 TRAP DOOR – SECTION DETAIL  
SCALE: NTS

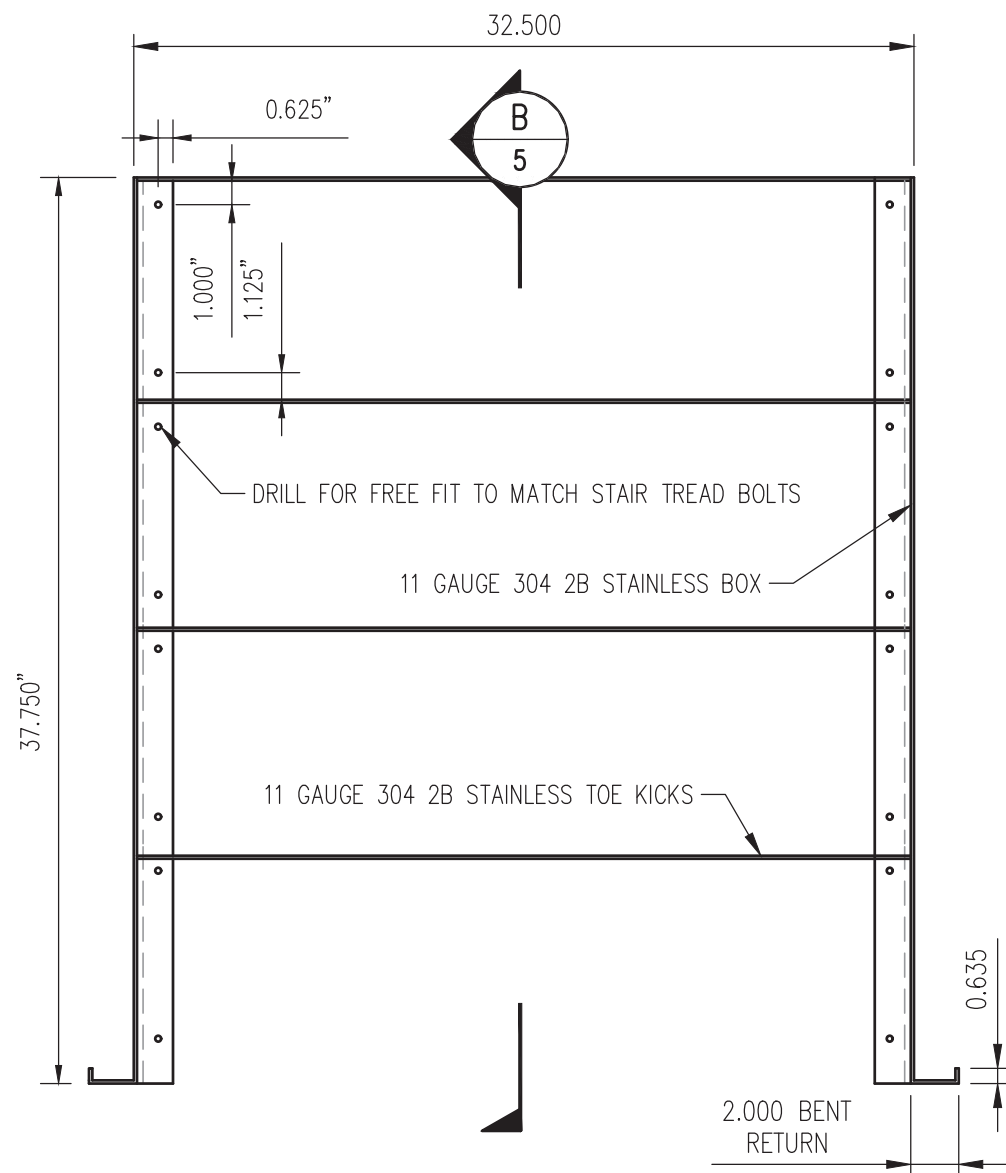


**F**  
4 TRAP DOOR – SECTION VIEW  
SCALE: NTS

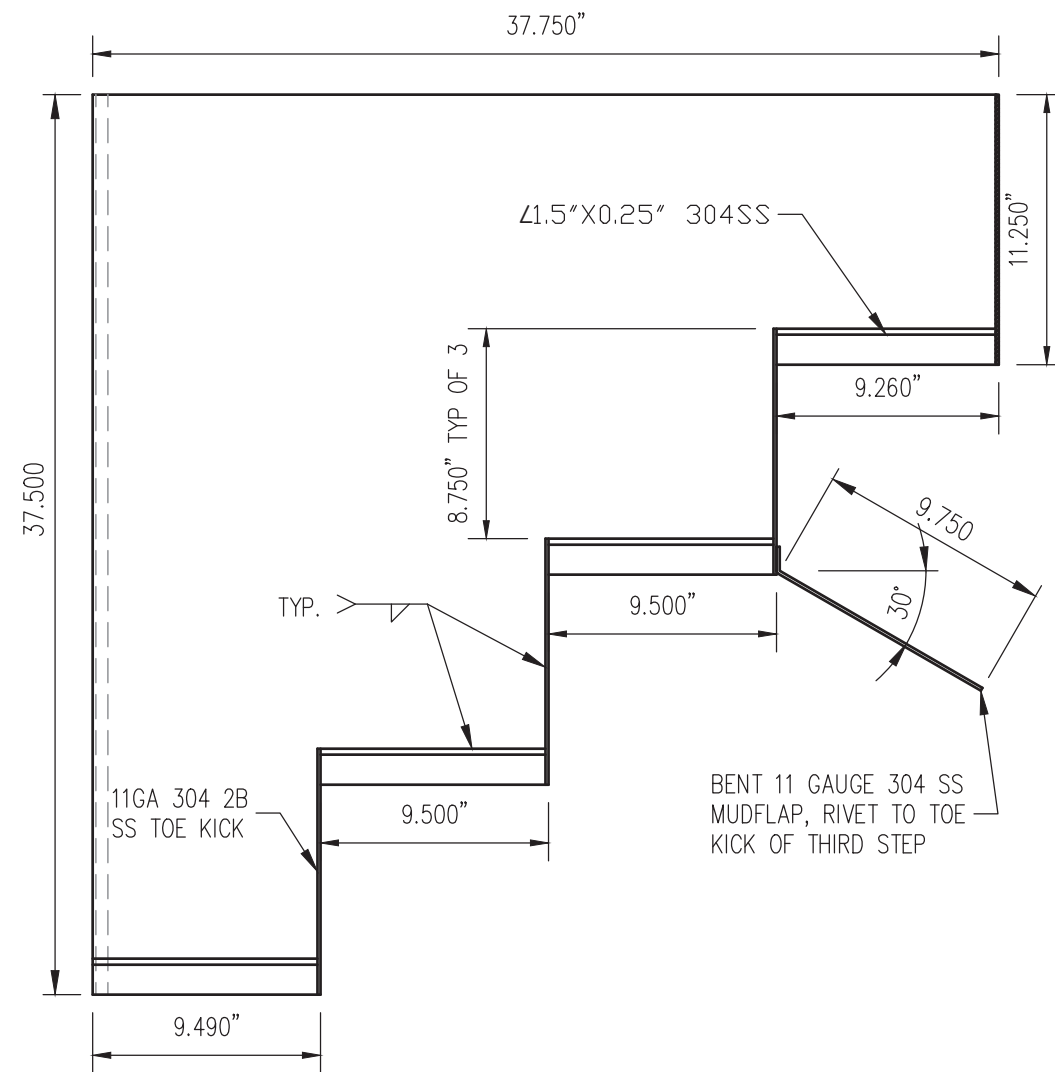
NOTES:

- 1) ALL MATERIAL 304SS UNLESS OTHERWISE NOTED.
- 2) WELD PROCESS: FCAW/SAW/GTAW
- 3) CONTRACTOR TO VERIFY ALL MEASUREMENTS AND FIT OF DOOR TO COACH DOOR FRAME STRUCTURE.
- 4) RIGHT SIDE DOOR SHOWN, LEFT SIDE DOOR IS MIRROR IMAGE OF THAT SHOWN.

<b>ALASKA RAILROAD CORPORATION</b> ENGINEERING SERVICES P.O. BOX 107500, ANCHORAGE, ALASKA 99510-7500		
PROJECT : <b>MOTIVE POWER AND EQUIPMENT PASSENGER EQUIPMENT</b>		
TITLE : <b>ARR 552 PAINT &amp; REPAIRS ADD. ALT. 1 TRAP DOOR FABRICATION</b>		
DESIGNED BY: <b>ARRC</b>	SCALE : <b>NTS</b>	AFE NO.: <b>11079 - ARRC</b>
DRAWN BY: <b>CDL</b>	DATE : <b>MAY 2024</b>	ACAD FILE:
CHECKED BY: <b>ARRC</b>		DWG NO. <b>4</b> OF <b>6</b>
APPROVED BY: <b>ARRC</b>		




A  
5 STAIR BOX – TOP VIEW  
SCALE: NTS

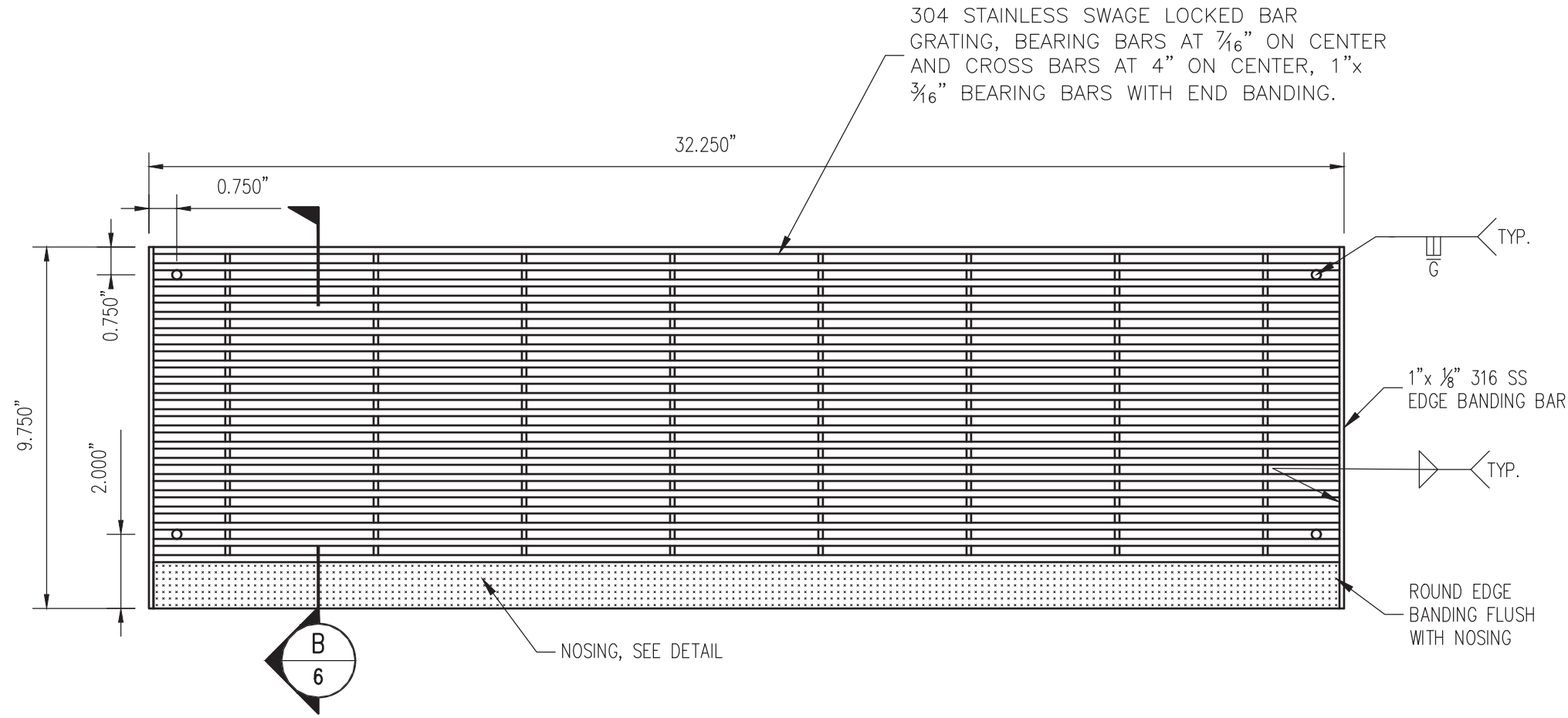


B  
5 STAIR BOX – SECTION VIEW  
SCALE: NTS

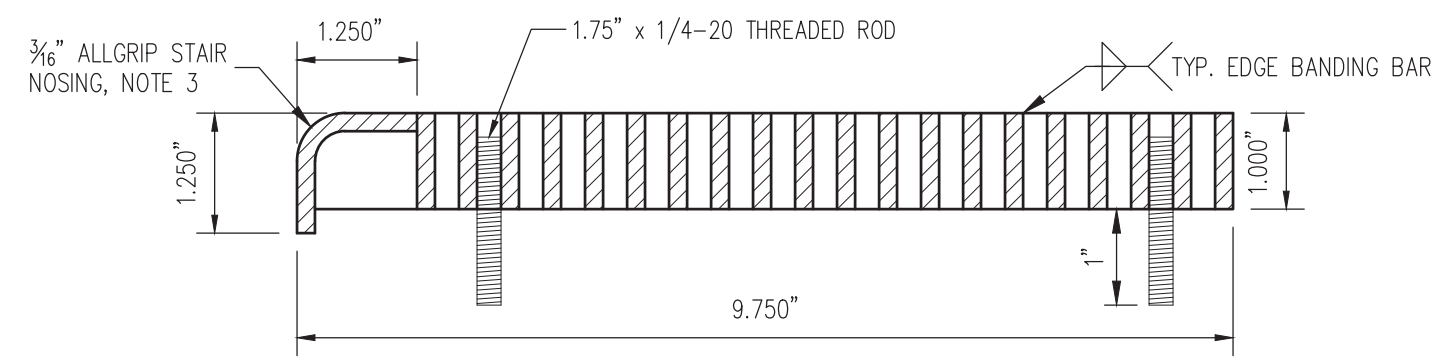
NOTES:

- 1) ALL MATERIAL 304 SS UNLESS OTHERWISE NOTED.
- 2) WELD PROCESS: FCAW/SAW/GTAW
- 3) CONTRACTOR TO VERIFY ALL MEASUREMENTS AND FIT OF STAIRS TO REBUILT CAR FRAME STRUCTURE. STAIRS ARE SYMMETRIC ON BOTH SIDES OF CAR.

 <b>ALASKA RAILROAD CORPORATION</b> ENGINEERING SERVICES P.O. BOX 107500, ANCHORAGE, ALASKA 99510-7500		
PROJECT : <b>MOTIVE POWER AND EQUIPMENT PASSENGER EQUIPMENT</b>		
TITLE: <b>ARR 552 PAINT &amp; REPAIRS ADD. ALT. 1 VESTIBULE STAIR BOX FABRICATION</b>		
DESIGNED BY: ARRC	SCALE : NTS	AFE NO.: 11079 - ARRC
DRAWN BY: CDL	DATE : MAY 2024	ACAD FILE:
CHECKED BY: ARRC		DWG NO. <b>5</b> OF <b>6</b>
APPROVED BY: ARRC		




A STAIR BOX - TOP VIEW  
6 SCALE: NTS



B STAIR BOX - SECTION VIEW  
6 SCALE: NTS

- NOTES:
- 1) ALL MATERIAL 304 SS UNLESS OTHERWISE NOTED.
  - 2) STAIR NOSING MATERIAL:  $\frac{3}{16}$ " x 1  $\frac{1}{4}$ " x 1  $\frac{1}{4}$ " ALLGRIP® STANDARD OR APPROVED EQUAL.
  - 3) WELD PROCESS: FCAW/SAW/GTAW
  - 4) CONTRACTOR TO VERIFY ALL MEASUREMENTS AND FIT OF STAIRS TO REBUILT CAR FRAME STRUCTURE.

 <b>ALASKA RAILROAD CORPORATION</b> ENGINEERING SERVICES P.O. BOX 107500, ANCHORAGE, ALASKA 99510-7500		
<b>PROJECT :</b> <b>MOTIVE POWER AND EQUIPMENT PASSENGER EQUIPMENT</b>		
<b>TITLE:</b> <b>ARR 552 PAINT &amp; REPAIRS ADD. ALT. 1 VESTIBULE STAIR TREAD FABRICATION</b>		
DESIGNED BY: ARRC	SCALE : NTS	AFE NO.: 11079 - ARRC
DRAWN BY: CDL	DATE : MAY 2024	ACAD FILE:
CHECKED BY: ARRC		DWG NO. 6 OF 6
APPROVED BY: ARRC		