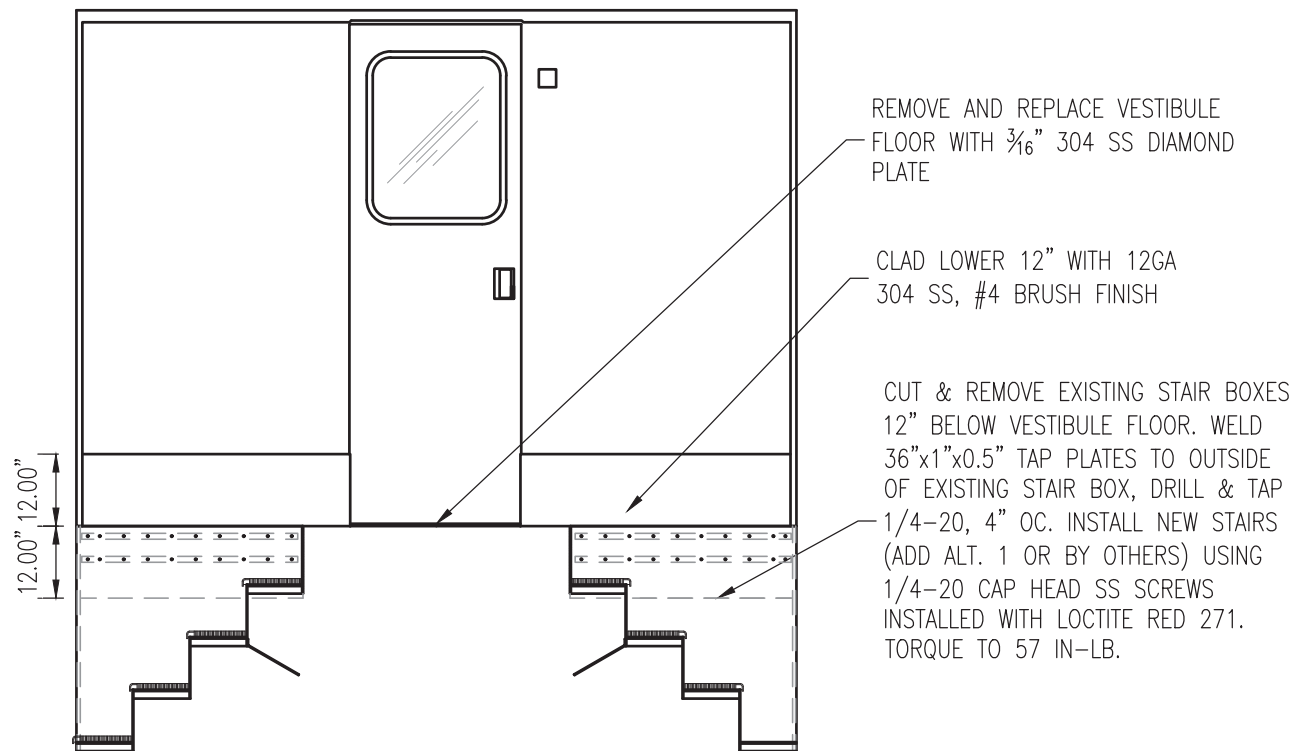
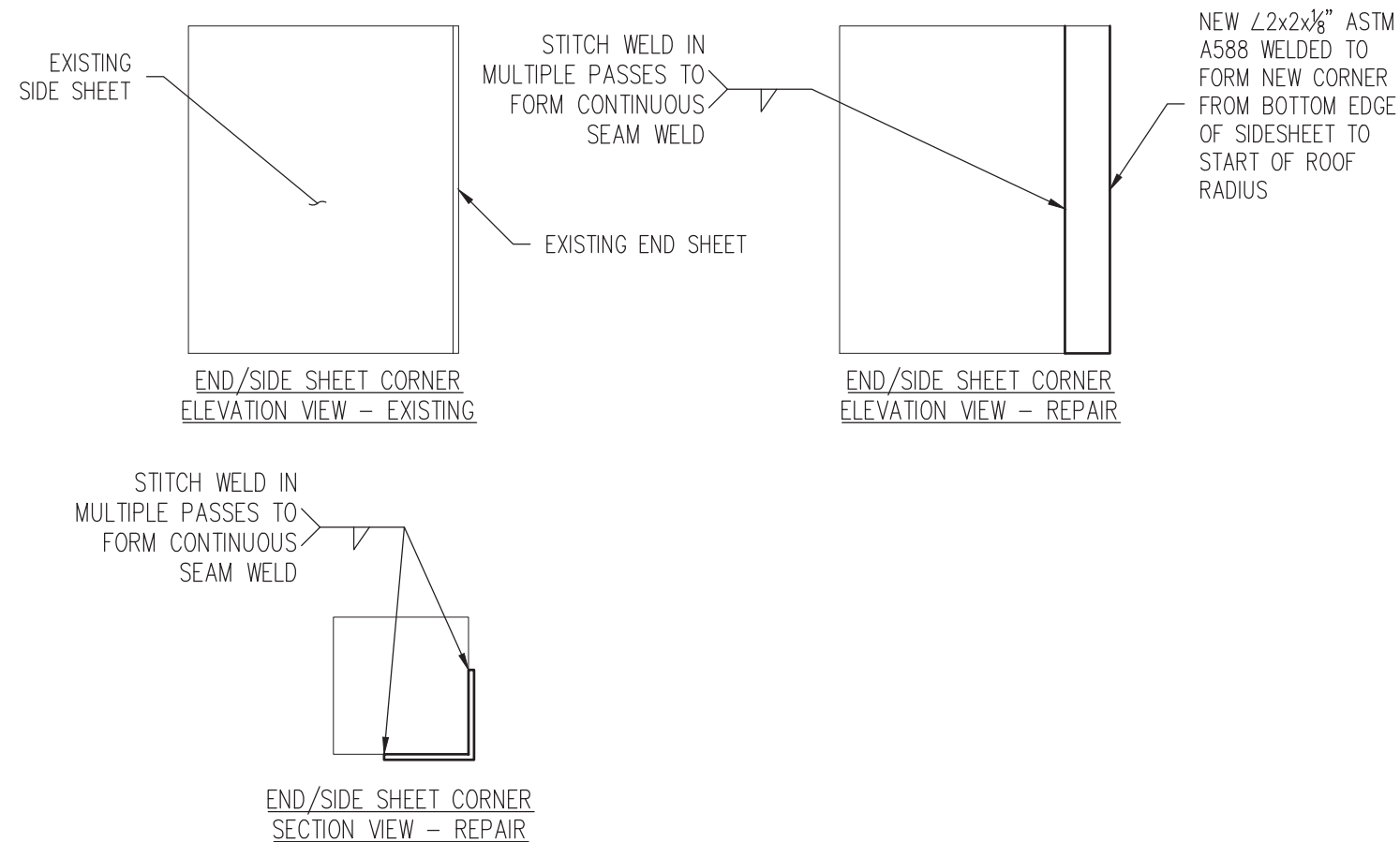

 ALASKA RAILROAD CORPORATION ENGINEERING SERVICES P.O. BOX 107500, ANCHORAGE, ALASKA 99510-7500		
PROJECT : MOTIVE POWER AND EQUIPMENT PASSENGER EQUIPMENT		
TITLE: ARR 552 PAINT AND REPAIRS ELEVATION VIEWS		
DESIGNED BY: <u>ARRC</u>	SCALE : NTS	AFE NO.: 11079 - ARRC
DRAWN BY: <u>CDL</u>	DATE : MAY 2024	ACAD FILE:
CHECKED BY: <u>ARRC</u>		DWG NO. 1 OF 3
APPROVED BY: <u>ARRC</u>		

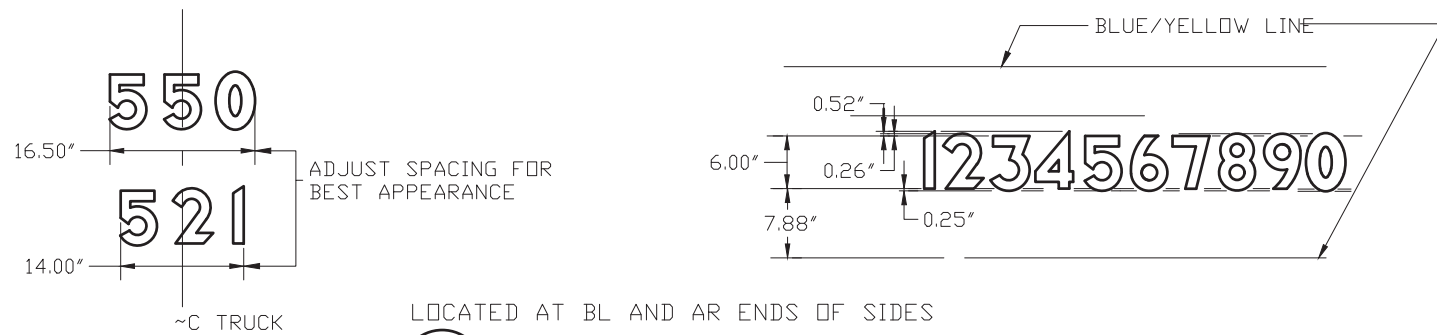


A
2 VESTIBULE INTERIOR SECTION VIEW
SCALE: NTS



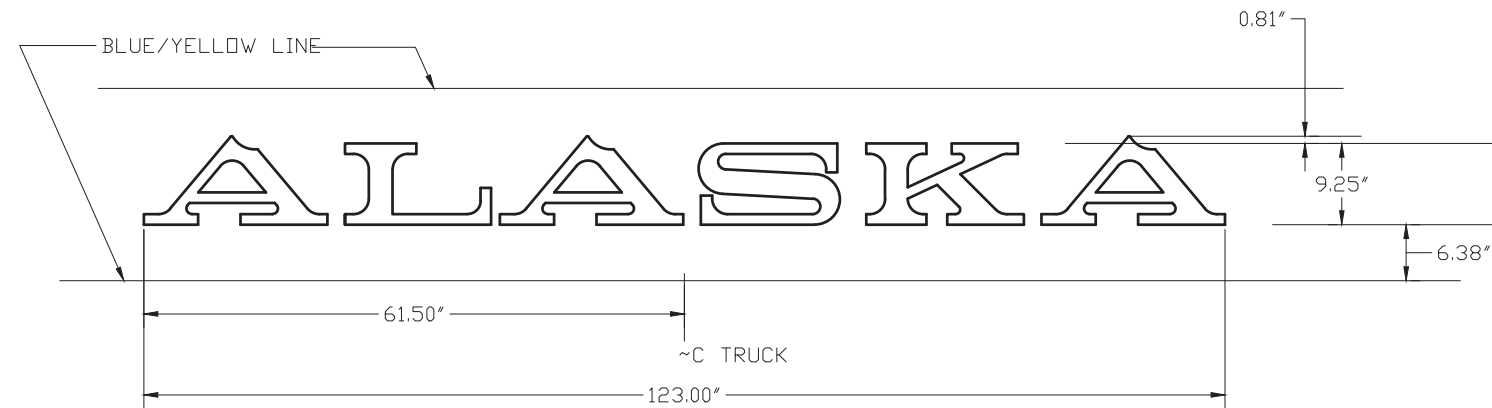
B
2 END/SIDE SHEET CORNER REPAIR
SCALE: NTS

 ALASKA RAILROAD CORPORATION ENGINEERING SERVICES P.O. BOX 107500, ANCHORAGE, ALASKA 99510-7500		
PROJECT : MOTIVE POWER AND EQUIPMENT PASSENGER EQUIPMENT		
TITLE: ARR 552 PAINT AND REPAIRS ELEVATION VIEWS		
DESIGNED BY: <u>ARRC</u>	SCALE : NTS	AFE NO.: 11079 - ARRC
DRAWN BY: <u>CDL</u>	DATE : MAY 2024	ACAD FILE:
CHECKED BY: <u>ARRC</u>		DWG NO. 2 OF 3
APPROVED BY: <u>ARRC</u>		



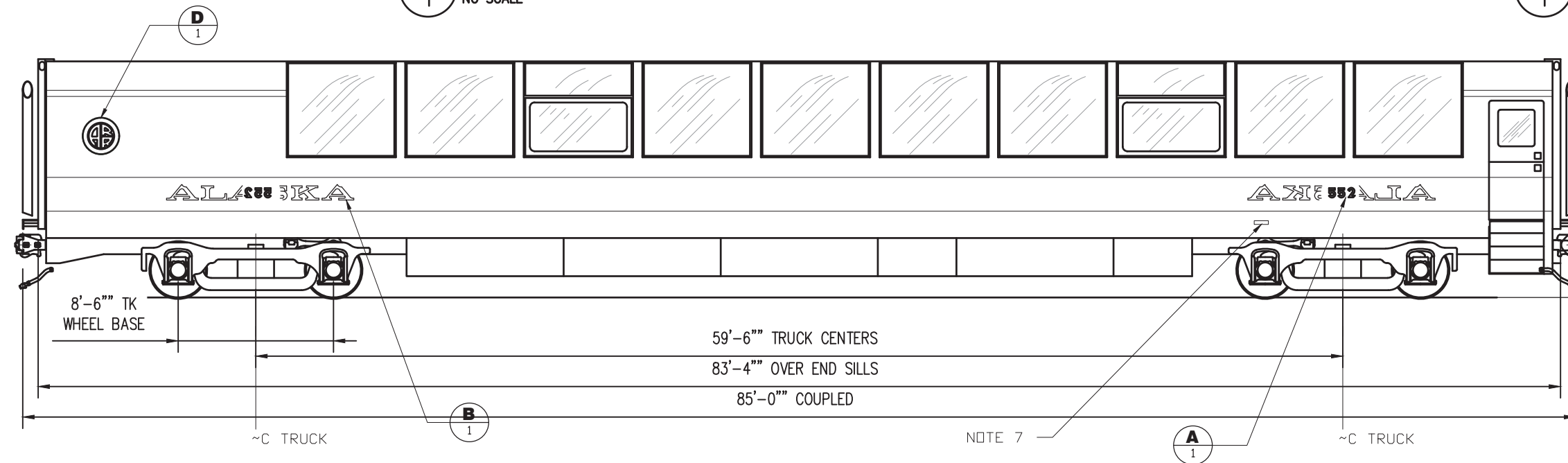
LOCATED AT BL AND AR ENDS OF SIDES

A
1
DETAIL A
NO SCALE

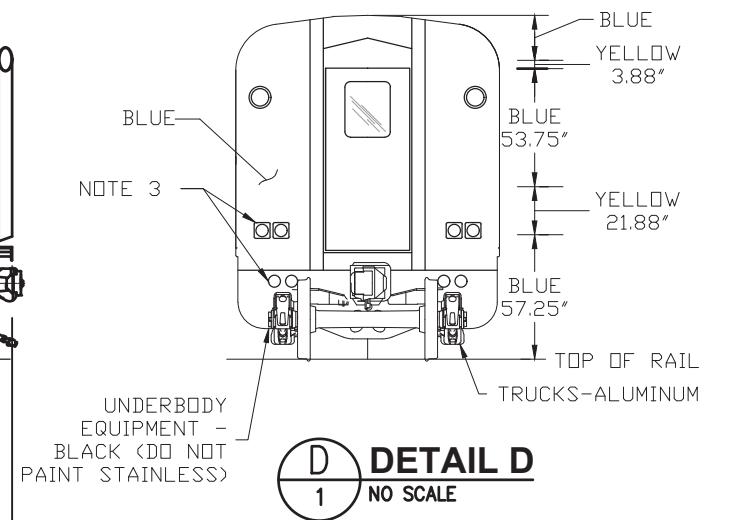


LOCATED AT BR AND AL ENDS OF SIDES

B
1
DETAIL B
NO SCALE



C
1
DETAIL C
NO SCALE



D
1
DETAIL D
NO SCALE

- GENERAL NOTES:**
- DO NOT PAINT STAINLESS STEEL APPLIANCES, OTHER BRIGHT METAL, COUPLERS OR WHEELS.
 - ALL PAINTING TO BE IN ACCORDANCE WITH ARR SPECIFICATION FOR PAINTING OF ROLLING STOCK.
 - COLOR CODE FOR TRAINLINE RECEPTACLES:
COMMUNICATIONS: LIGHT BLUE
DUMMY: WHITE
POWER: RED
LOCOMOTIVE MU: YELLOW
 - DETAILS OF GRAPHICS ARE DOCUMENTED IN THE AUTOCAD FILE OF THIS DRAWING.
 - DIMENSIONS SHOWN IN DETAIL D APPLY AT BODY BOLSTERS. LINES ARE TO FOLLOW CARBODY CAMBER.
 - INTERIOR OF VESTIBULES ARE CONSIDERED EXTERIOR. VERTICAL SURFACES AND CEILINGS ARE TO BE PAINTED BLUE. ALASKA RAILROAD WILL REPLACE ALL VESTIBULE SIGNS.
 - AEI TAGS (2) ARE SIDE SPECIFIC; MARK AND REPLACE TO SAME SIDE, SAME LOCATION.
 - NEW RETRO-REFLECTIVE EMERGENCY ACCESS SIGNS WILL BE INSTALLED BY ALASKA RAILROAD.
 - DRAWING DOES NOT PURPORT TO SHOW CONSTRUCTION IN ABSOLUTE AND COMPLETE DETAIL.



18.00" VISUAL END OF SIDE SHEET

24" DIAMETER LOGOTYPE.
VERTICAL POSITION: CENTERED IN 52.75" BLUE STRIPE.
HORIZONTAL POSITION: MAINTAIN 18" (OR AS SPACE PERMITS) FROM VISUAL END OF SIDE SHEET (eg CORNER POST OR DOOR JAMB), LOCATED AT BL AND AR ENDS OF SIDES.

ALASKA RAILROAD CORPORATION ENGINEERING SERVICES P.O. BOX 107500, ANCHORAGE, ALASKA 99510-7500		
PROJECT : MOTIVE POWER AND EQUIPMENT PASSENGER EQUIPMENT		
TITLE: ARR 552 PAINT AND REPAIRS ELEVATION VIEWS		
DESIGNED BY: ARRC	SCALE : NTS	AFE NO.: 11079 - ARRC
DRAWN BY: CDL	DATE : MAY 2024	ACAD FILE: DWG NO.
CHECKED BY: ARRC		3 OF 3
APPROVED BY: ARRC		