

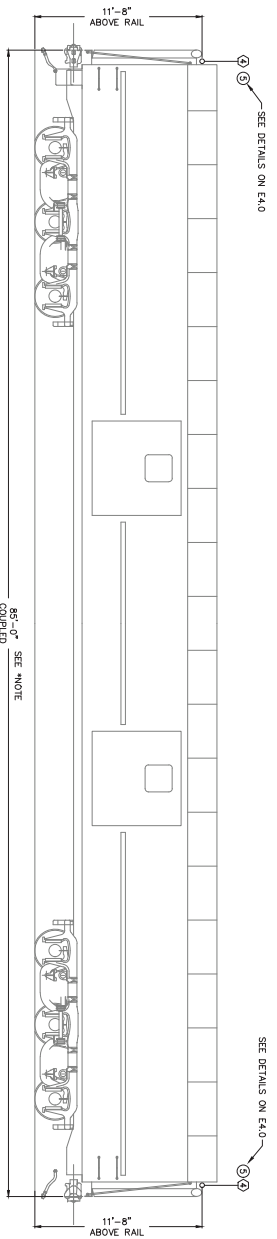
- NOTES:
1. (E) ALL EQUIPMENT CALL OUTS MAY NOT BE ON THIS SHEET.
 2. (C) CIRCLED NUMBERS REFERENCE INSULATION NOTES ON SHEET E1.0
 3. SEE SHEET E2.0 FOR POWER INSTALL.

LEGEND:

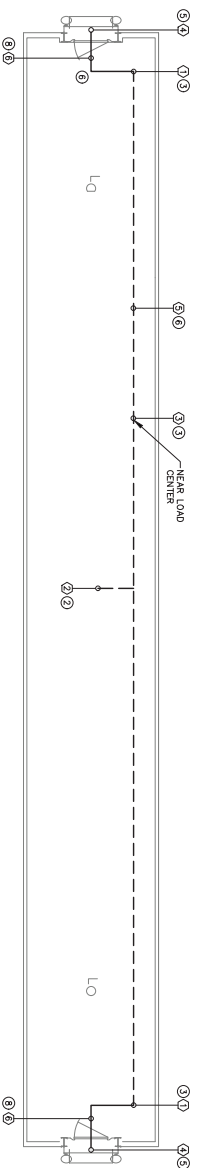
--- CATNA
 --- COAX

- EQUIPMENT LEGEND:
- (1) ACCESS POINT IN BRIDGE MODE INTER-CONSIST LINK (LIC)
 - (2) ACCESS POINT (ALL IN ONE UNIT) IN CLIENT MODE (W)
 - (3) 12 FOOT WALKED LAYER 3 SWITCH (SW)
 - (4) 8 INCH ANTENNA (ANT)
 - (5) CATNA W12 CONNECTOR TO W12 CONNECTOR
 - (6) COAX OMA CONNECTOR TO OMA CONNECTOR (TWO CABLES PER ANTENNA)
 - (7) WIRE WELDING WITH 3 INCH EXPANSION JOINTS

NOTE:
 THE CIRCLED LENGTH OF THE CARRIAGES:
 110 AND 111 ARE FEET



A CARS ARR-100 - 103, 110, 111 - ELEVATION
 E3.1 SCALE: NOT TO SCALE



1 CARS ARR-100 - 103, 110, 111 - PLAN VIEW
 E3.1 SCALE: NOT TO SCALE



NEW HORIZONS

COPYRIGHT NOTICE
 THIS LAYOUT AND ALL RIGHTS RESERVED.
 NEW HORIZONS TELECOM, INC.,
 PROVIDES THESE SERVICES TO CLIENTS UNDER
 A LICENSED AGREEMENT. ANY UNAUTHORIZED
 REPRODUCTION OR TRANSMISSION OF THIS
 DESIGN AND TO OTHERS IS PROHIBITED.



IBC

NO.	REVISION	DATE
0	ISSUE FOR CONSTRUCTION	2/20/20

ALASKA RAILROAD
 PASSENGER CAR
 WIRELESS AND WIFI
 SERVICES

DWG: JAA DSN: DRK APP: GRD	REV
ION #: 21-011720 DATE: 2/20/20	0

ARR
 100 - 103, 110, 111
 BAGGAGE CARS
 E3.1